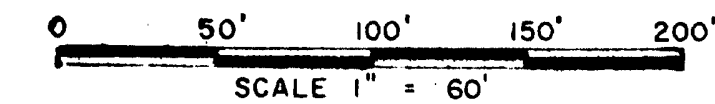
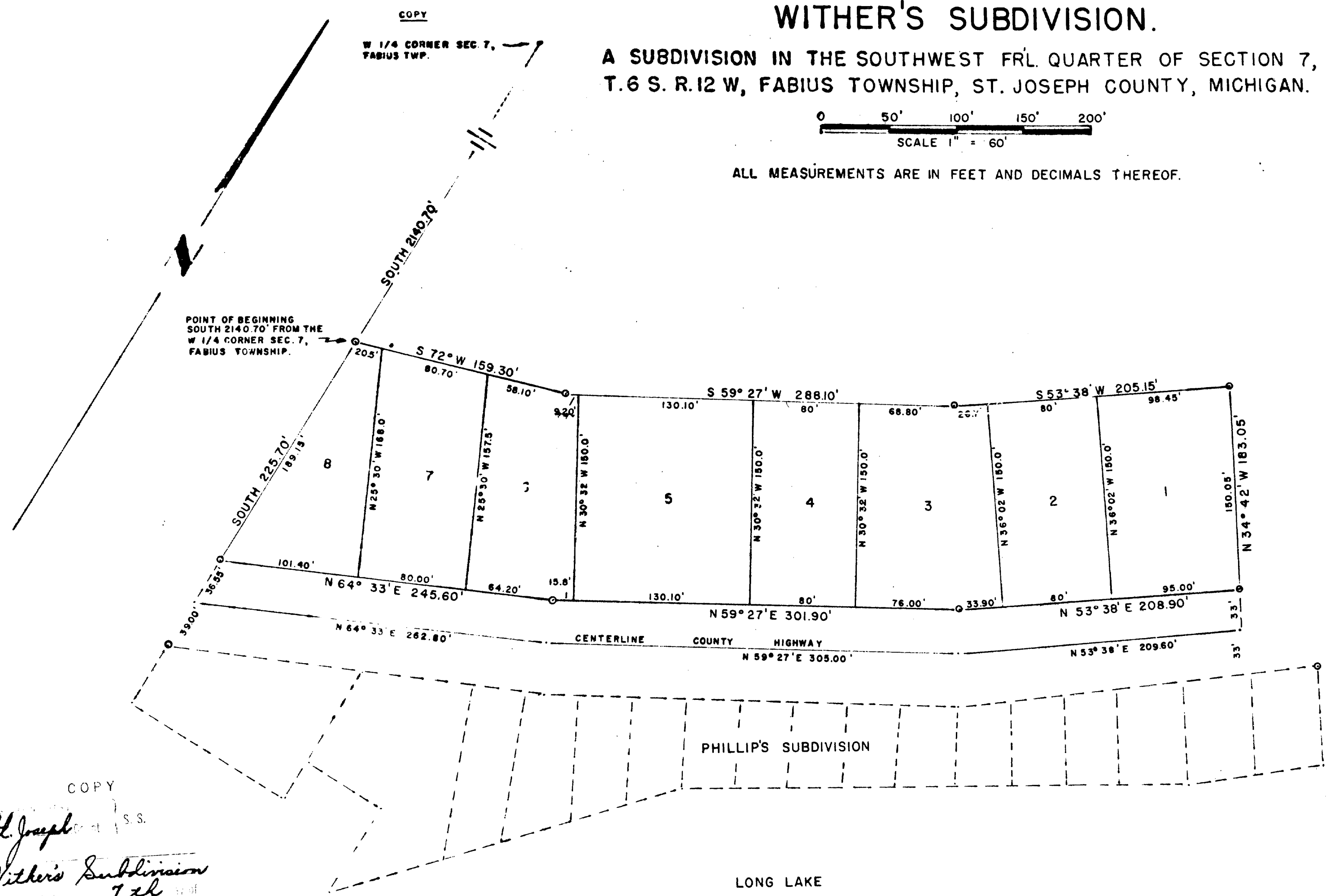


WITHER'S SUBDIVISION.

A SUBDIVISION IN THE SOUTHWEST FRL. QUARTER OF SECTION 7,
T.6 S. R.12 W, FABIUS TOWNSHIP, ST. JOSEPH COUNTY, MICHIGAN.



ALL MEASUREMENTS ARE IN FEET AND DECIMALS THEREOF.



DEDICATION

KNOW ALL MEN BY THESE PRESENTS, that we... Herman Withers and... Lila Withers his wife... as proprietors, have caused the land embraced in the annexed plat to be surveyed, laid out and platted, to be known as... Wither's Subdivision... A Subdivision in the Southwest Frl. Quarter of Section 7... T.6 S., R.12 W., Fabius Township, St. Joseph County, Michigan... and that the streets as shown on said plat are hereby dedicated to the use of the public.

Signed and Sealed in the presence of:
D.J. SMALLCOMBE (Witness) Herman Withers (L.S.)
Laura D. O'Shea (Witness) Lila Withers (L.S.)

ACKNOWLEDGMENT

STATE OF MICHIGAN
County of Cass
On this... day of... 1962, before me, a Notary Public in and for said County, personally came the above named... Herman Withers and Lila Withers, his wife... known to me to be the persons who executed the above dedication, and acknowledged the same to be their free act and deed.
Notary Public... County... My Commission expires...

DESCRIPTION OF LAND PLATTED

The land embraced in the annexed plat of... Wither's Subdivision... A Subdivision in the Southwest Frl. Quarter of Section 7... T.6 S., R.12 W., Fabius Township, St. Joseph County, Michigan... is described as follows: Beginning at a point 2140.70 feet South of the West Quarter corner of Section 7 T.6 S., R.12 W. Fabius Township, St. Joseph County, Michigan, thence South 225.70 feet, thence N 64°33'E 262.80 feet, thence N 59°27'E 305.00 feet, thence N 53°38'E 209.60 feet, thence N 34°42'W 183.05 feet, thence S 53°38'W 205.15 feet, thence S 59°27'W 288.10 feet, thence S 72°00'W 159.30 feet to the point of beginning. Containing 8 Lots.

SURVEYOR'S CERTIFICATE

I hereby certify that the plat hereon delineated is a correct one and that permanent metal monuments consisting of bars not less than one-half inch in diameter and 36 inches in length, or shorter bars of not less than one-half inch in diameter lapped over each other at least 6 inches with an over-all length of not less than 36 inches, enclosed in a concrete cylinder at least 4 inches in diameter and 36 inches in depth have been placed at points marked thus (O) as thereon shown at all angles in the boundaries of the land platted, at all the intersections of streets, intersections of alleys, or of streets and alleys, and at the intersections of streets and alleys with the boundaries of the plat as shown on said plat.

John L. Corbit
Registered Land Surveyor
John L. Corbit

COPY
St. Joseph Co. S.S.
Withers Subdivision
7th of
December 6, 1962
4 plats
56
Donna E. Donmyer

December 6, 1962
December 10, 1962
December 6, 1962

Richard E. Lowmyer

APPROVAL BY COUNTY PLAT BOARD

This plat was approved on the... day of... by the... County Plat Board

Donna E. Donmyer (County Register of Deeds)
John W. Marvin (County Clerk)
Richard K. Olin (County Treasurer)
Ruel N. Beebe (County Drain Commissioner)

APPROVAL BY BOARD OF COUNTY ROAD COMMISSIONERS

This plat has been examined and was approved on the... day of... 1962 by the... County Board of Road Commissioners.

Ivan Bent (Chairman)
D.W. Arney (Member)
Rollo Crafts (Member)

CERTIFICATE OF MUNICIPAL APPROVAL

This plat was approved by the... Township Board of the... Township of... Fabius at a meeting held... and is in compliance with Section 19a, and that the width of lots conform with the requirements of Section 30, Act 172, of 1929, as amended.

Raymond A. Krull
Raymond A. Krull
Clerk

COUNTY TREASURER'S CERTIFICATE

Office of County Treasurer, St. Joseph County, Michigan
I hereby certify that there are no tax liens or titles held by the State on the lands described hereon, and that there are no tax liens or titles held by individuals on said lands, for the five years preceding the... day of... 1962 and that the taxes for said period of five years are all paid, as shown by the records of this office.

This certificate does not apply to taxes, if any, now in process of collection by township, city or village collecting officers.
Richard K. Olin
Richard K. Olin
(County Treasurer)

45309