

See Restrictions recorded in  
Liber 323 of Deeds p 865

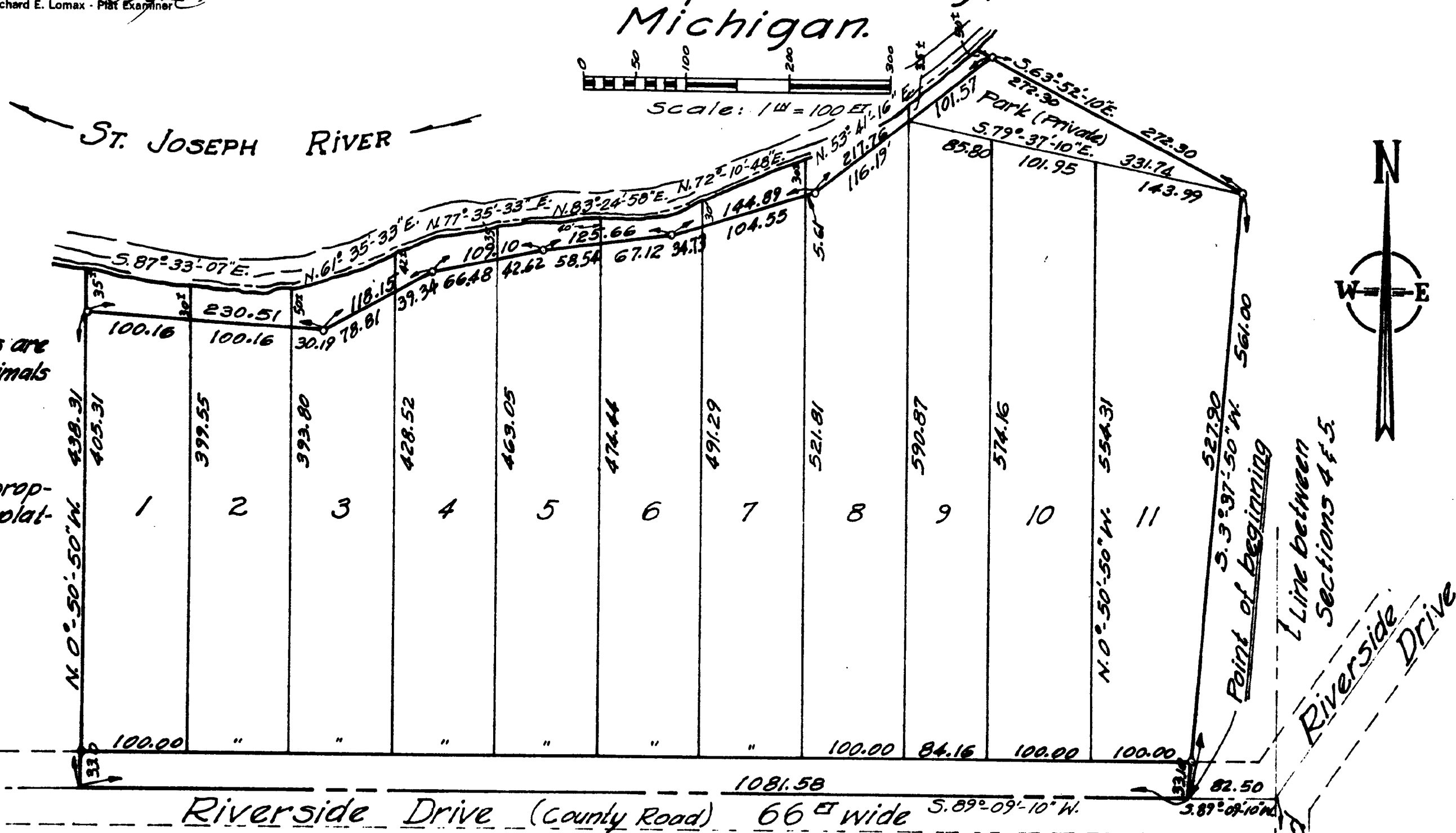
ORIGINAL COPY

# Vistula Acres

a subdivision of part of the N.E.  
frl. 1/4 of the N.E. frl. 1/4 of Section 5,  
T. 8 S., R. 12 W., (Mottville Twp.),  
St. Joseph County,  
Michigan.

EXAMINED AND APPROVED  
Date OCT - 7 1965

Allison Green  
ALLISON GREEN  
ASTING AUDITOR GENERAL  
By Richard E. Lomax - P.R. Examiner



All dimensions are  
in feet and decimals  
thereof.

All adjoining prop-  
erties are unplat-  
ted.

### DESCRIPTION OF LAND PLATTED

The land embraced in the annexed plat of Vistula Acres a sub-  
division of part of the N.E. frl. 1/4 of the N.E. frl. 1/4 of Section  
5, T. 8 S., R. 12 W. (Mottville Twp.), St. Joseph County, Mich-  
igan, is described as follows: Beginning at a point in the  
centerline of Riverside Drive (a county road), said point being  
S. 89°-09'-10"W. 82.50 feet from a point on the line between  
Sections 4 and 5 which point being N. 0°-08'-00"W. 1397.88  
feet from the E. 1/2 corner of Section 5;  
thence S. 89°-09'-10"W. 1081.58 feet;  
thence N. 0°-50'-50"W. 438.31 feet;  
thence S. 87°-33'-07"E. 230.51 feet;  
thence N. 61°-35'-33"E. 118.15 feet;  
thence N. 77°-35'-33"E. 109.10 feet;  
thence N. 83°-24'-58"E. 125.66 feet;  
thence N. 72°-10'-48"E. 144.89 feet;  
thence N. 53°-41'-16"E. 217.76 feet;  
thence S. 63°-52'-10"E. 272.30 feet;  
thence S. 3°-37'-50"W. 561.00 feet to beginning.  
Containing eleven (11) lots and one (1) park.

### DEDICATION

KNOW ALL MEN BY THESE PRESENTS, That I Jenny Hrastnik, a widow,  
have caused the land embraced in the annexed plat to be survey-  
ed, laid out and platted, to be known as "Vistula Acres" a  
subdivision of part of the N.E. frl. 1/4 of the N.E. frl. 1/4 of Sec-  
tion 5, T. 8 S., R. 12 W. (Mottville Twp.), St. Joseph County,  
Michigan, and that the streets as shown on said plat are  
hereby dedicated to the use of the public, and the private park  
is hereby dedicated to the owners of Lots #9, 10, and 11. The  
side lines of Lots #1 to 8 inclusive and of the private park  
extend to the waters edge.

Signed and Sealed  
in the presence of

Caleb F. Enix  
Caleb F. Enix

Jenny Hrastnik (L.S.)  
Jenny Hrastnik  
Route 1,  
White Pigeon, Michigan

### OWNERSHIP CERTIFICATE

I, Caleb F. Enix, a duly licenced attorney at law, do certify  
that I have examined the abstract of title from the ownership  
of the government to this date, on lands embraced within  
Vistula Acres a subdivision of part of the N.E. frl. 1/4 of the  
N.E. frl. 1/4 of Section 5, T. 8 S., R. 12 W. (Mottville Twp.), St.  
Joseph County, Michigan, as hereon delineated, and as of the  
date of signing the dedication hereon, certify that all  
persons holding title of record herein have joined in the  
execution thereof, as required by law.

Caleb F. Enix  
Caleb F. Enix, attorney  
104 1/2 W. Chicago Road  
Sturgis, Michigan

STATE OF MICHIGAN  
County of St. Joseph ss.

On this 6 day of August 1965 before me, a  
Notary Public in and for said county, personally came the above  
named Jenny Hrastnik, a widow, known to me to be the person  
who executed the above dedication, and acknowledged the same  
to be her free act and deed.

Arthur Tait  
Arthur Tait  
Notary Public, St. Joseph Co.,  
Michigan

### CERTIFICATE OF MUNICIPAL APPROVAL

This plat was approved by the Township Board of the Township  
of Mottville at a meeting held August 11, 1965, and complies  
with Section 19A and the width of lots is in compliance with  
requirements of Section 30, Act 172 of 1929, as amended.

Walter Quandt  
Walter Quandt, Clerk

### CERTIFICATE OF APPROVAL BY COUNTY BOARD

This plat was approved on the 24th day of August 1965  
by the St. Joseph County County Plat Board.

Donna E. Donayer  
Donna E. Donayer, Register of Deeds

John W. Marvin  
John W. Marvin, County Clerk

Richard K. Olin  
Richard K. Olin, County Treasurer

Ruel N. Beebe  
Ruel N. Beebe, Drain Commissioner

### COUNTY TREASURER'S CERTIFICATE

Office of the County Treasurer, St. Joseph County.  
I hereby certify, that there are no tax liens or titles held  
by the State on the lands described hereon, and that there  
are no tax liens or titles held by individuals on said lands,  
for the five years preceding the 17th day of August 1965  
and that the taxes for said period of five years are fully  
paid as shown by the records of this office.  
This certificate does not apply to taxes, if any, now in pro-  
cess of collection by township, city or village collecting officers.

Richard K. Olin  
Richard K. Olin, County Treasurer

### CERTIFICATE OF APPROVAL BY COUNTY ROAD COMMISSIONERS

This plat has been examined and was approved on the 19th day  
of August 1965 by the St. Joseph County Board of Road  
Commissioners.

Ivan Bent  
Ivan Bent, Chairman

D. W. Arney  
D. W. Arney, Member

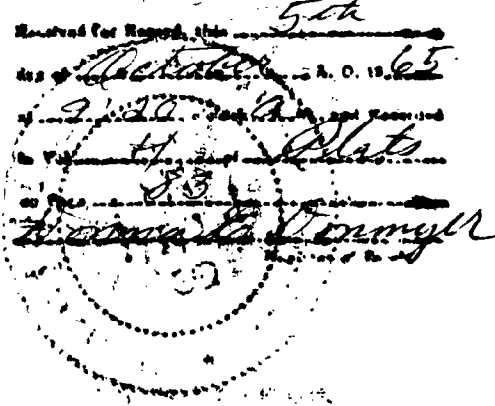
Carl L. Roberts  
Carl L. Roberts, Member

### SURVEYOR'S CERTIFICATE

I hereby certify that the plat hereon delineated is a correct  
one and that permanent metal monuments consisting of iron rods  
at least one half-inch in diameter and thirty-six inches in  
length encased in concrete cylinder at least four inches in  
diameter and thirty-six inches in length have been placed at  
all points marked thus "o" as thereon shown at all angles in  
the boundary of the plat, at the intersection of lines of streets  
and at the intersection of the lines of streets with the bound-  
aries of the plat as shown on said plat. Drafted and prepared  
by H. Donald Peirce.

H. Donald Peirce  
H. Donald Peirce,  
Registered Land Surveyor  
103 N. Broadway  
Cassopolis, Michigan

REGISTERED COPY  
COUNTY OF ST. JOSEPH  
STATE OF MICHIGAN



My Commission expires \_\_\_\_\_