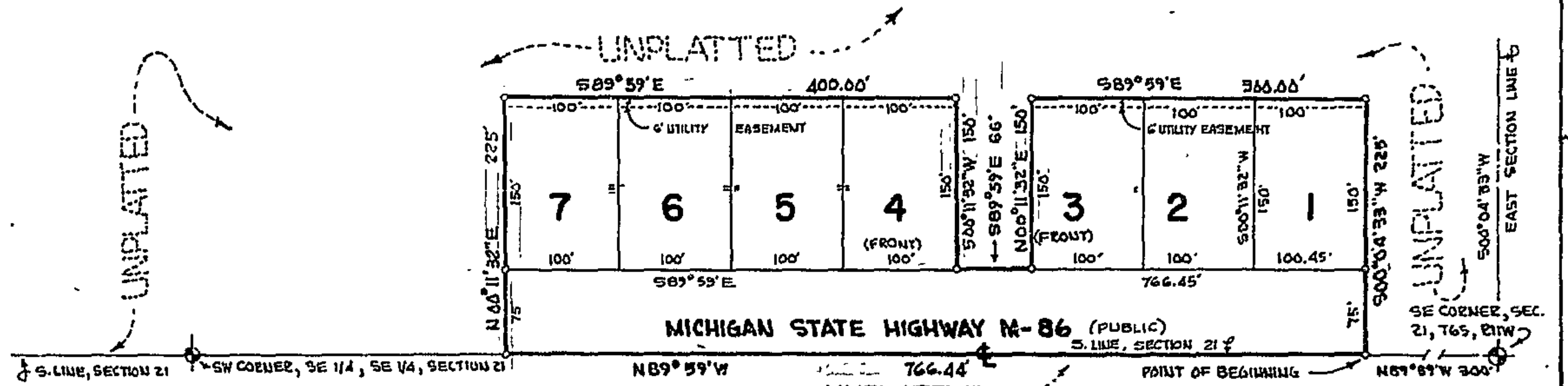


PINECREST

A SUBDIVISION SITUATED IN THE SOUTH-EAST 1/4 OF SECTION 21, TOWN 6 SOUTH, RANGE 11 WEST, LOCKPORT TOWNSHIP, ST. JOSEPH COUNTY, MICHIGAN



CERTIFICATE OF MUNICIPAL APPROVAL:

I HEREBY CERTIFY THAT THIS PLAT WAS APPROVED BY THE TOWNSHIP BOARD OF THE TOWNSHIP OF LOCKPORT AT A MEETING HELD JULY 26, 1972, AND WAS REVIEWED AND FOUND TO BE IN COMPLIANCE WITH ACT 288, P.A. 1967. THIS PLAT WAS APPROVED ON JULY 17, 1972 BY THE ST. JOSEPH COUNTY HEALTH DEPARTMENT.

Thora Hoshel
THORA HOSHEL, TOWNSHIP CLERK

CERTIFICATE OF COUNTY ROAD COMMISSIONERS:

APPROVED ON JULY 26, 1972 AS COMPLYING WITH SECTIONS 183 OF ACT 288, P.A. 1967, AND THE APPLICABLE PUBLISHED RULES AND REGULATIONS OF THE BOARD OF ROAD COMMISSIONERS OF ST. JOSEPH COUNTY.

Frank Shellenbarger
FRANK SHELLENBARGER, CHAIRMAN

Carl L. Roberts
CARL L. ROBERTS, MEMBER

D.W. Arney
D.W. ARNEY, MEMBER

COUNTY DRAIN COMMISSIONER'S CERTIFICATE:

APPROVED ON JULY 25, 1972, AS COMPLYING WITH SECTION 192 OF ACT 288, P.A. 1967, AND THE APPLICABLE RULES AND REGULATIONS PUBLISHED BY MY OFFICE IN THE COUNTY OF ST. JOSEPH.

Lloyd S. Cliff
LLOYD S. CLIFF, DRAIN COMMISSIONER

COUNTY PLAT BOARD CERTIFICATE:

THIS PLAT HAS BEEN REVIEWED AND IS APPROVED BY THE ST. JOSEPH COUNTY PLAT BOARD ON AUG. 27, 1972, AS BEING IN COMPLIANCE WITH ALL OF THE PROVISIONS OF ACT 288, P.A. 1967, AND THE PLAT BOARD'S APPLICABLE RULES AND REGULATIONS.

Donna E. Doninger
DONNA E. DONINGER
REGISTER OF DEEDS

Marjorie E. Powell
MARJORIE E. POWELL
DEPUTY COUNTY TREASURER

John W. Marvin
JOHN W. MARVIN
COUNTY CLERK

EXAMINED AND APPROVED
Date Oct. 27, 1972

Allison Green
ALLISON GREEN
STATE TREASURER
By Richard E. Lomas
Richard E. Lomas, Plat Examiner

PROPRIETOR'S CERTIFICATE:

WE, AS PROPRIETORS, CERTIFY THAT WE CAUSED THE LAND ENCOMPASSED IN THIS PLAT TO BE SURVEYED, DIVIDED, MAPPED AND DEDICATED AS REPRESENTED ON THIS PLAT AND THAT HIGHWAY M-86 WHICH FALLS WITHIN THE BOUNDARY OF SAID PLAT IS FOR THE USE OF THE PUBLIC; THAT THE PUBLIC UTILITY EASEMENTS ARE PRIVATE EASEMENTS AND THAT ALL OTHER EASEMENTS ARE FOR THE USES SHOWN ON THE PLAT.

Lynn A. Weyrick
LYNN A. WEYRICK
SITE 4
THREE RIVERS, MICHIGAN 49093

Leona E. Weyrick
LEONA E. WEYRICK
SITE 4
THREE RIVERS, MICHIGAN 49091

Robert E. Sayers
ROBERT E. SAYERS, WITNESS

Jean L. Sayers
JEAN L. SAYERS, WITNESS

ACKNOWLEDGEMENT:

STATE OF MICHIGAN
COUNTY OF ST. JOSEPH SS

PERSONALLY CAME BEFORE ME THIS 27th day of July, 1972 THE ABOVE NAMED LYNN A. WEYRICK AND LEONA E. WEYRICK, HIS WIFE, TO ME KNOWN TO BE THE PERSONS WHO EXECUTED THE FOREGOING INSTRUMENT AND ACKNOWLEDGED THAT THEY EXECUTED THE SAME AS THEIR FREE ACT AND DEED.

NOTARY PUBLIC Jean L. Sayers COUNTY, MICHIGAN
JEAN L. SAYERS ST. JOSEPH
MY COMMISSION EXPIRES, MAY 29, 1976

COUNTY TREASURER'S CERTIFICATE:

RECORDS IN MY OFFICE SHOW NO UNPAID TAXES OR SPECIAL ASSESSMENTS FOR THE FIVE YEARS PRECEDING JULY 25, 1972 INVOLVING THE LANDS INCLUDED IN THIS PLAT

Stanley M. Huff
STANLEY M. HUFF, ST. JOSEPH COUNTY TREASURER

REGISTER OF DEEDS OFFICE
ST. JOSEPH COUNTY, MICHIGAN

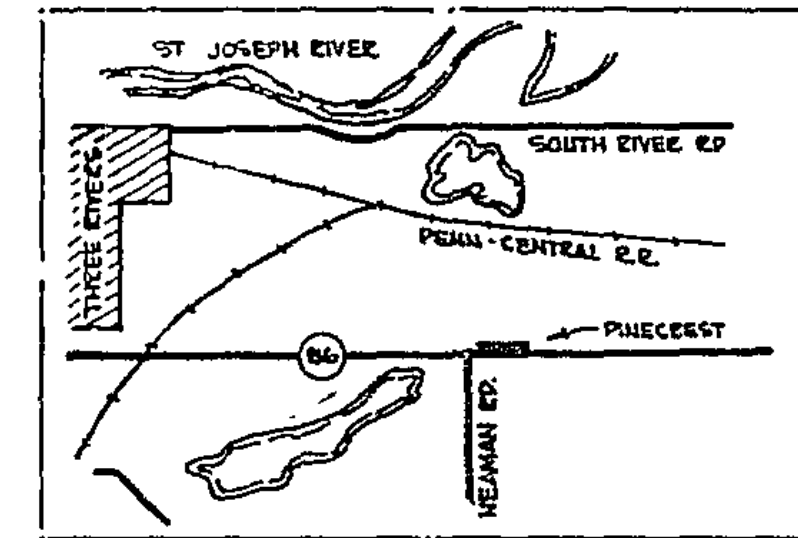
THIS PLAT OF PINECREST WAS RECORDED THIS 31st DAY OF Oct., 1972 AT 2:09 O'CLOCK P.M. IN BOOK 5 OF PLATS, ON PAGE 44.

Donna E. Doninger
DONNA E. DONINGER
REGISTER OF DEEDS

CERTIFICATE OF DEPARTMENT OF STATE HIGHWAYS:

APPROVED ON AUG 27, 1972 AS COMPLYING WITH ACT 288, P.A. 1967 AND THE APPLICABLE PUBLISHED RULES AND REGULATIONS OF THE DEPARTMENT OF STATE HIGHWAYS.

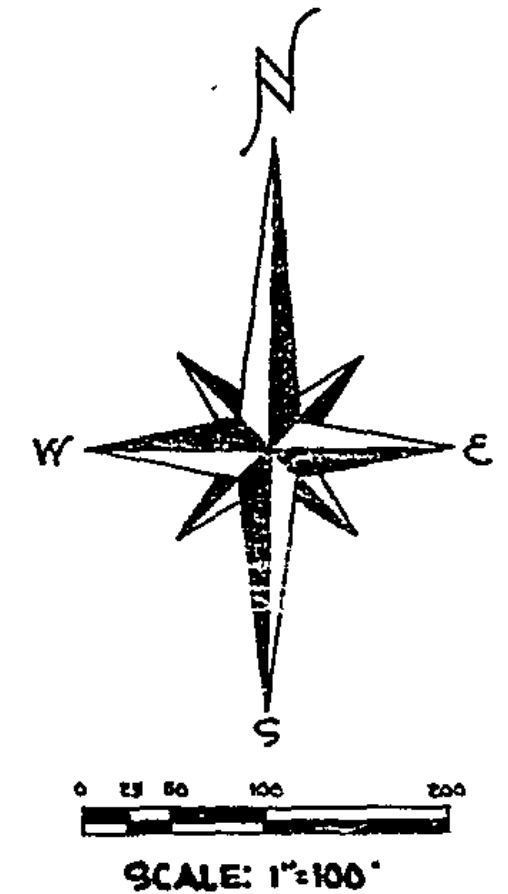
Herb E. Stafseth
HERB E. STAFSETH, STATE HIGHWAY DIRECTOR



VICINITY MAP - NO SCALE

LEGEND:

PLAT BEARINGS WERE ESTABLISHED BY THE NORTH LINE OF SECTION 21 AS SHOWN ON JOHNSTONE SUBDIVISION, RECORDED IN VOLUME 3 OF PLATS, PAGE 103. ALL DIMENSIONS ARE IN FEET. 4" CONCRETE MONUMENTS ARE AT ALL POINTS MARKED THUS: "a" ALL LOT CORNERS ARE MARKED BY A 1/2" x 18" GOLF IRON BAR.



SURVEYOR'S CERTIFICATE:

I, ROBERT E. SAYERS, SURVEYOR, CERTIFY: THAT I HAVE SURVEYED, DIVIDED AND MAPPED THE LAND SHOWN ON THIS PLAT, DESCRIBED AS FOLLOWS: PINECREST, A SUBDIVISION SITUATED IN THE SOUTHEAST 1/4 OF SECTION 21, TOWN 6 SOUTH, RANGE 11 WEST, LOCKPORT TOWNSHIP, ST. JOSEPH COUNTY, MICHIGAN, IS DESCRIBED AS FOLLOWS: COMMENCING AT THE SOUTHEAST CORNER OF SAID SECTION 21 AND RUNNING THENCE N89°59'W ALONG THE SOUTH LINE OF SAID SECTION 300 FEET TO THE POINT OF BEGINNING; THENCE N89°59'W ALONG SAID SECTION LINE 766.44 FEET; THENCE N00°11'32"E PARALLEL WITH THE EAST 1/8th LINE OF SAID SECTION 21 A DISTANCE OF 225 FEET; THENCE S89°59'E 400.00 FEET; THENCE S00°11'32"W, PARALLEL WITH SAID 1/8th LINE 150 FEET; THENCE S89°59'E 66 FEET; THENCE N00°11'32"E 150 FEET; THENCE S89°59'E 300.00 FEET; THENCE S00°04'33"W, PARALLEL WITH THE EAST LINE OF SAID SECTION 21, A DISTANCE OF 225 FEET TO THE POINT OF BEGINNING. THIS SUBDIVISION CONTAINS 7 NUMBERED LOTS. THAT I HAVE MADE SUCH SURVEY, LAND-DIVISION AND PLAT BY THE DIRECTION OF ALL THE EXTERIOR BOUNDARIES OF THE LAND SURVEYED AND THE SUBDIVISION OF IT. THAT THE REQUIRED MONUMENTS AND LOT MARKERS HAVE BEEN LOCATED IN THE GROUND AS REQUIRED BY SECTION 128 OF THE ACT. THAT THE ACCURACY OF THE SURVEY IS WITHIN THE LIMITS REQUIRED BY SECTION 126 OF THE ACT. THAT THE BEARINGS SHOWN ON THE PLAT ARE EXPRESSED AS REQUIRED BY SECTION 126(3) OF THE ACT, AND AS EXPLAINED IN THE LEGEND.

Robert E. Sayers
ROBERT E. SAYERS, REGISTERED LAND SURVEYOR #7876
P.O. BOX 212, STURGIS, MICHIGAN 49091

DATE July 14, 1972



See Restrictions recorded in Liber 362 of Records page 975