

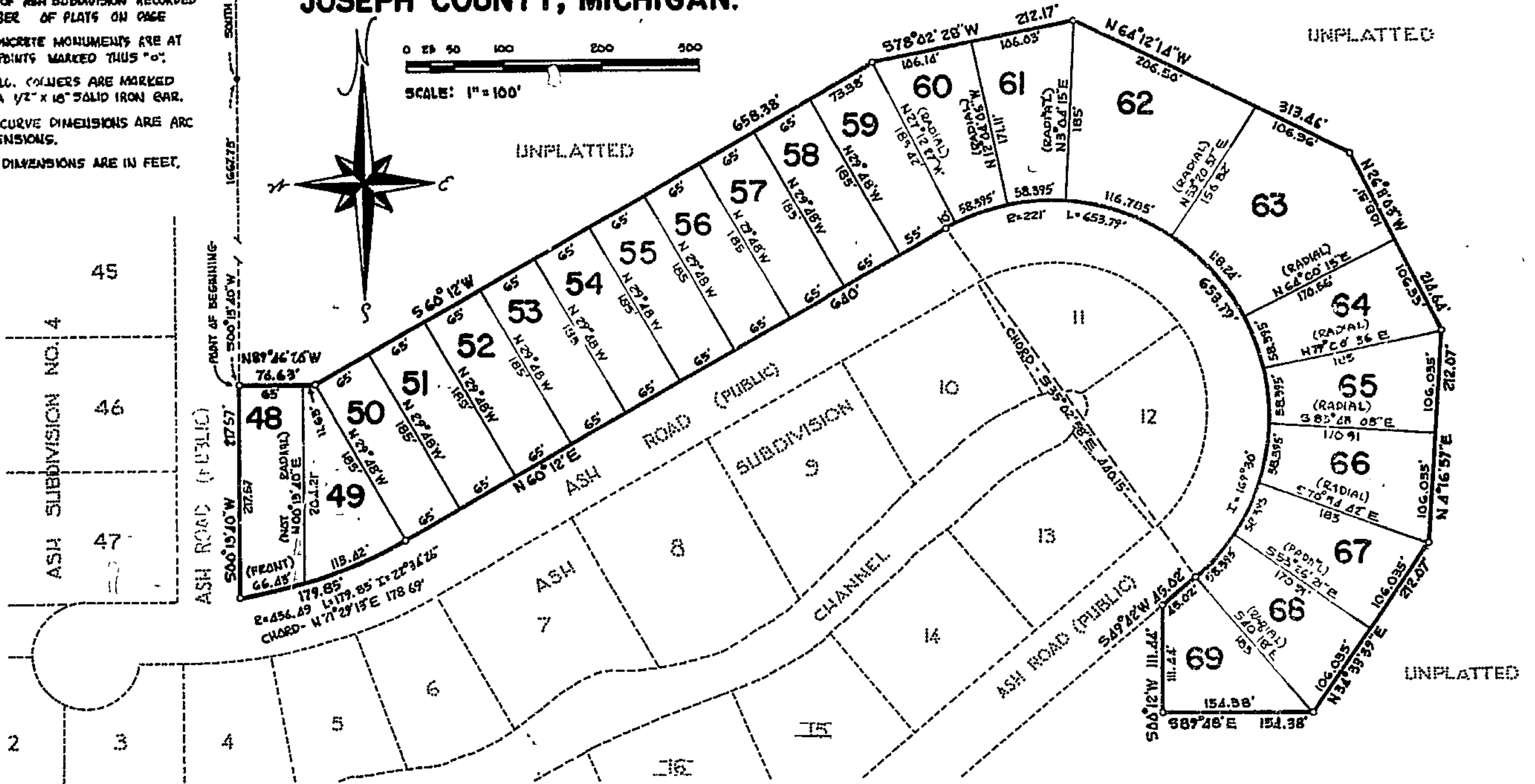
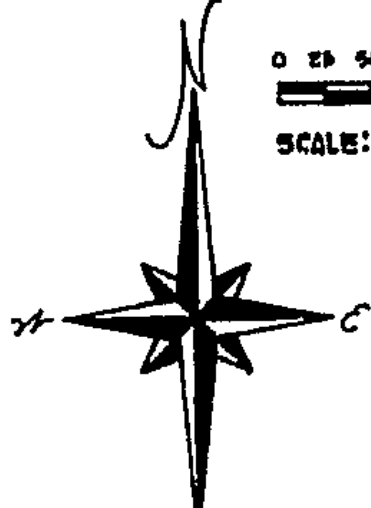
See Restrictions recorded in Liber 360 of Records, p. 553

# ASH SUBDIVISION NO. 5

A SUBDIVISION SITUATED IN THE SOUTHWEST FRACTIONAL QUARTER OF SECTION 16, TOWN 6 SOUTH, RANGE II WEST, LOCKPORT TOWNSHIP, ST. JOSEPH COUNTY, MICHIGAN.

**LEGEND**

PLAT BEARINGS WERE ESTABLISHED BY THE BEARING OF THE E-W 1/4 LINE ON SECTION 16 AS SHOWN ON THE PLAT OF ASH SUBDIVISION RECORDED IN LIBER OF PLATS ON PAGE 4. CONCRETE MONUMENTS ARE AT ALL POINTS MARKED THIS "O". ALL 1/4 CORNERS ARE MARKED BY A 1/2" X 1/2" SOLID IRON BAR. ALL CURVE DIMENSIONS ARE ARC DIMENSIONS. ALL DIMENSIONS ARE IN FEET.



### CERTIFICATE OF MUNICIPAL APPROVAL:

I HEREBY CERTIFY THAT THIS PLAT WAS APPROVED BY THE TOWNSHIP BOARD OF THE TOWNSHIP OF LOCKPORT AT A MEETING HELD JUNE 28, 1972, AND WAS REVIEWED AND FOUND TO BE IN COMPLIANCE WITH ACT 288, P.A. 1967. THIS PLAT WAS APPROVED ON MAY 22, 1972, BY THE ST. JOSEPH COUNTY HEALTH DEPARTMENT

*Thora B. Hoshel*  
THORA B. HOSHEL, TOWNSHIP CLERK

### CERTIFICATE OF COUNTY ROAD COMMISSIONERS

APPROVED ON JUNE 1, 1972 AS COMPLYING WITH SECTIONS 185 OF ACT 288, P.A. 1967, AND THE APPLICABLE PUBLISHED RULES AND REGULATIONS OF THE BOARD OF ROAD COMMISSIONERS OF ST. JOSEPH COUNTY.

*Frank Shellenbarger*  
FRANK SHELLENBARGER, CHAIRMAN

*Dw. Arney*  
DW. ARNEY, MEMBER

*Carl L. Roberts*  
CARL L. ROBERTS, MEMBER

### COUNTY DRAIN COMMISSIONERS CERTIFICATE:

APPROVED ON MAY 31, 1972, AS COMPLYING WITH SECTION 192 OF ACT 288, P.A. 1967, AND THE APPLICABLE RULES AND REGULATIONS PUBLISHED BY MY OFFICE IN THE COUNTY OF ST. JOSEPH.

*Lloyd S. Clupp*  
LLOYD S. CLUPP, DRAIN COMMISSIONER

### COUNTY PLAT BOARD CERTIFICATE:

THIS PLAT HAS BEEN REVIEWED AND IS APPROVED BY THE ST. JOSEPH COUNTY PLAT BOARD ON JULY 11<sup>th</sup>, 1972, AS BEING IN COMPLIANCE WITH ALL OF THE PROVISIONS OF ACT 288, P.A. 1967, AND THE PLAT BOARD'S APPLICABLE RULES AND REGULATIONS.

*Dwain E. Donmyer*  
DWAINE E. DONMYER  
REGISTER OF DEEDS

*Stanley M. Luff*  
STANLEY M. LUFF  
COUNTY TREASURER

*John W. Marvlin*  
JOHN W. MARVLIN  
COUNTY CLERK

### SURVEYOR'S CERTIFICATE:

I, ROBERT E. SAYERS, SURVEYOR, CERTIFY THAT I HAVE SURVEYED, DIVIDED AND MAPPED THE LAND SHOWN ON THIS PLAT, DESCRIBED AS FOLLOWS; ASH SUBDIVISION NO. 5, A SUBDIVISION SITUATED IN THE SOUTHWEST FRACTIONAL QUARTER OF SECTION 16, TOWN 6 SOUTH, RANGE II WEST, LOCKPORT TOWNSHIP, ST. JOSEPH COUNTY, MICHIGAN, DESCRIBED AS FOLLOWS; COMMENCING AT THE WEST 1/4 CORNER OF SAID SECTION 16 AND RUNNING THENCE EAST ALONG THE E-W 1/4 LINE OF SAID SECTION FOR 384 FEET, THENCE SOUTH, AT RIGHT ANGLES TO SAID 1/4 LINE, 235 FEET, THENCE S00°15'40"W 166.73 FEET TO THE POINT OF BEGINNING; THENCE S00°15'40"W 217.57 FEET, THENCE NE'LY ALONG A 456.49 FOOT RADIUS CURVE TO THE LEFT AN ARC DISTANCE OF 179.85 FEET (SAID CURVE HAVING AN "I" ANGLE OF 22°54'26" C' BEING SUBTENDED BY A CHORD BEARING N 71°29'15"E 178.69 FEET), THENCE N 60°12'E 640 FEET, THENCE NE'LY, BE'LY ALONG A 221 FOOT RADIUS CURVE TO THE RIGHT AN ARC DISTANCE OF 653.79 FEET (SAID CURVE HAVING AN "I" ANGLE OF 169°50' AND BEING SUBTENDED BY A CHORD BEARING S 85°02'58"E 440.15 FEET), THENCE S 49°42'W 45.02 FEET, THENCE S00°12'W 111.44 FEET, THENCE S89°48'E 154.38 FEET, THENCE N 34°55'59"E 212.07 FEET, THENCE N 4°16'57"E 212.07 FEET, THENCE N 26°11'05"W 214.64 FEET, THENCE N 64°12'14"W 313.46 FEET, THENCE S78°02'28"W 212.17 FEET, THENCE S 60°12'W 658.58 FEET, THENCE N89°44'20"W 76.63 FEET TO THE POINT OF BEGINNING. THIS SUBDIVISION CONTAINS 22 NUMBERED LOTS, THAT I HAVE MADE SUCH SURVEY, LAND-DIVISION AND PLAT BY THE DIRECTION OF THE OWNER OF SUCH LAND, THAT SUCH PLAT IS A CORRECT REPRESENTATION OF ALL THE EXTERIOR BOUNDARIES OF THE LAND SURVEYED AND THE SUBDIVISION OF IT. THAT THE REQUIRED MONUMENTS AND LOT MARKERS HAVE BEEN LOCATED IN THE GROUND AS REQUIRED BY SECTION 125 OF THE ACT. THAT THE ACCURACY OF THE SURVEY IS WITHIN THE LIMITS REQUIRED BY SECTION 126 OF THE ACT. THAT THE BEARINGS SHOWN ON THE PLAT ARE EXPRESSED AS REQUIRED BY SECTION 126 (3) OF THE ACT AND AS EXPLAINED IN THE LEGEND.

MAY 24, 1972  
DATE

*Robert E. Sayers*  
ROBERT E. SAYERS, REGISTERED LAND SURVEYOR #7874  
P.O. BOX, 212, STURGIS, MICHIGAN, 49091

### PROPRIETOR'S CERTIFICATE:

I, AS PROPRIETOR, CERTIFY THAT I CAUSED THE LAND EMBRACED IN THIS PLAT TO BE SURVEYED, DIVIDED, MAPPED AND DEDICATED AS REPRESENTED ON THIS PLAT, THAT THE PUBLIC UTILITY EASEMENTS ARE PRIVATE EASEMENTS AND THAT ALL OTHER EASEMENTS ARE FOR THE USES SHOWN ON THE PLAT.

*Orin R. Ash*  
ORIN R. ASH  
RT# 4, THREE RIVERS, MICHIGAN, 49093

*Robert E. Sayers*  
ROBERT E. SAYERS, WITNESS

*Jean L. Sayers*  
JEAN L. SAYERS, WITNESS

### ACKNOWLEDGEMENT:

STATE OF MICHIGAN SS  
COUNTY OF ST. JOSEPH

A SINGLE MAN,  
PERSONALLY CAME BEFORE ME THIS 24<sup>th</sup> DAY OF MAY, 1972, THE ABOVE NAMED ORIN R. ASH, TO ME KNOWN TO BE THE PERSON WHO EXECUTED THE FOREGOING INSTRUMENT AND ACKNOWLEDGED THAT HE EXECUTED THE SAME AS HIS FREE ACT AND DEED

NOTARY PUBLIC, *Jean L. Sayers*  
JEAN L. SAYERS, ST. JOSEPH COUNTY, MICHIGAN  
MY COMMISSION EXPIRES: May 27, 1972

### COUNTY TREASURER'S CERTIFICATE:

RECORDS IN MY OFFICE SHOW NO UNPAID TAXES OR SPECIAL ASSESSMENTS FOR THE FIVE YEARS PRECEDING MAY 31, 1972 INVOLVING THE LANDS INCLUDED IN THIS PLAT.

*Stanley M. Luff*  
STANLEY M. LUFF, COUNTY TREASURER, ST. JOSEPH COUNTY

REGISTER OF DEEDS OFFICE SS  
ST. JOSEPH COUNTY

THIS PLAT OF ASH SUBDIVISION NO. 5 WAS RECORDED THIS 18<sup>th</sup> DAY OF Aug., 1972 AT 2:46-CLOCK P.M. IN LIBER OF PLATS, PAGE 43.

*Dwain E. Donmyer*  
DWAINE E. DONMYER, REGISTER OF DEEDS



EXAMINED AND APPROVED  
Date Aug 16, 1972

*Allison Green*  
ALLISON GREEN  
STATE TREASURER  
*Richard E. Lomax*  
Richard E. Lomax, Plat Examiner

