

Examined and Approved

JUL 23 1912

Chas. L. Hensley
Deputy Auditor General

Scale. 100 feet = 1 inch.

Sec. 1.

PLAT OF HIGHLAND PARK ADDITION TO THE CITY OF STURGIS, ST. JOSEPH COUNTY, MICHIGAN.

Description of Land Platted.

The City of Highland Park Addition to Sturgis, St. Joseph County, Michigan, is located on the following described lands: Beginning 10.00 feet south of the South-east corner of section one in Township eight south of Range ten West, and running thence S. 89° 58' W. 790.5 feet thence N. 00° 1' W. 736 feet thence N. 89° 58' E. 96.55 feet thence N. 00° 1' E. 644.7 feet thence N. 89° 58' E. 97.11 feet thence S. 00° 1' E. 132 feet thence N. 89° 58' E. 121 feet thence S. 00° 1' W. 130 feet thence N. 89° 58' E. 121 feet thence S. 00° 1' W. 130 feet thence N. 89° 58' E. 121 feet thence S. 00° 1' W. 130 feet thence N. 89° 58' E. 121 feet thence S. 00° 1' W. 130 feet thence N. 89° 58' E. 121 feet thence S. 00° 1' W. 130 feet to place of beginning

Surveyor's Certificate.

I hereby certify that the plat hereon delineated is a correct one, and that permanent monuments, consisting of gas pipe 1 inch in diameter by 24 inches long, are planted at points indicated thus (O), that steel rods 5-8 inch in diameter by 20 inches in length are planted at points indicated thus (x), and that steel shafting 1 1/2 inches in diameter is planted at the points indicated thus (C), as thereon shown, at all angles in the boundaries of the land platted, and at all intersections of streets, or streets and alleys.

Geo. A. Eagleton
Surveyor.

County Treasurer's Certificate Relating to Taxes.

Office of County Treasurer,
St. Joseph County.

Centreville, Mich., June 10th 1912.

I hereby certify that there are no tax liens or titles held by the state on the lands described ~~herein~~, and that there are no tax liens or titles held by individuals on said lands for the five years preceding the 10th day of June 1912 and that the taxes for said period of five years are paid as shown by the records of this office.

William Harrison
County Treasurer.

Certificate of Municipal Approval

This plat was approved by the Common Council of the City of Sturgis, at a meeting held June 10, 1912.

H. L. Clifford
Clerk.

Dedication.

Know all men by these presents, that we, Henry R. Osbon as proprietor of lots 1 to 77 inclusive, and Emma V. Osbon, his wife, and Sheridan Osbon, widower, as propretor of lots 78 to 138 inclusive, have caused the lands embraced in the foregoing plat, to be surveyed, laid out and platted, to be known as Highland Park Addition to Sturgis, St. Joseph county, Michigan, and that the streets and alleys as shown on said plat are hereby dedicated to the use of the public.

Henry R. Osbon [SEAL]
Emma V. Osbon [SEAL]
Sheridan Osbon [SEAL]

Signed and sealed in the presence of

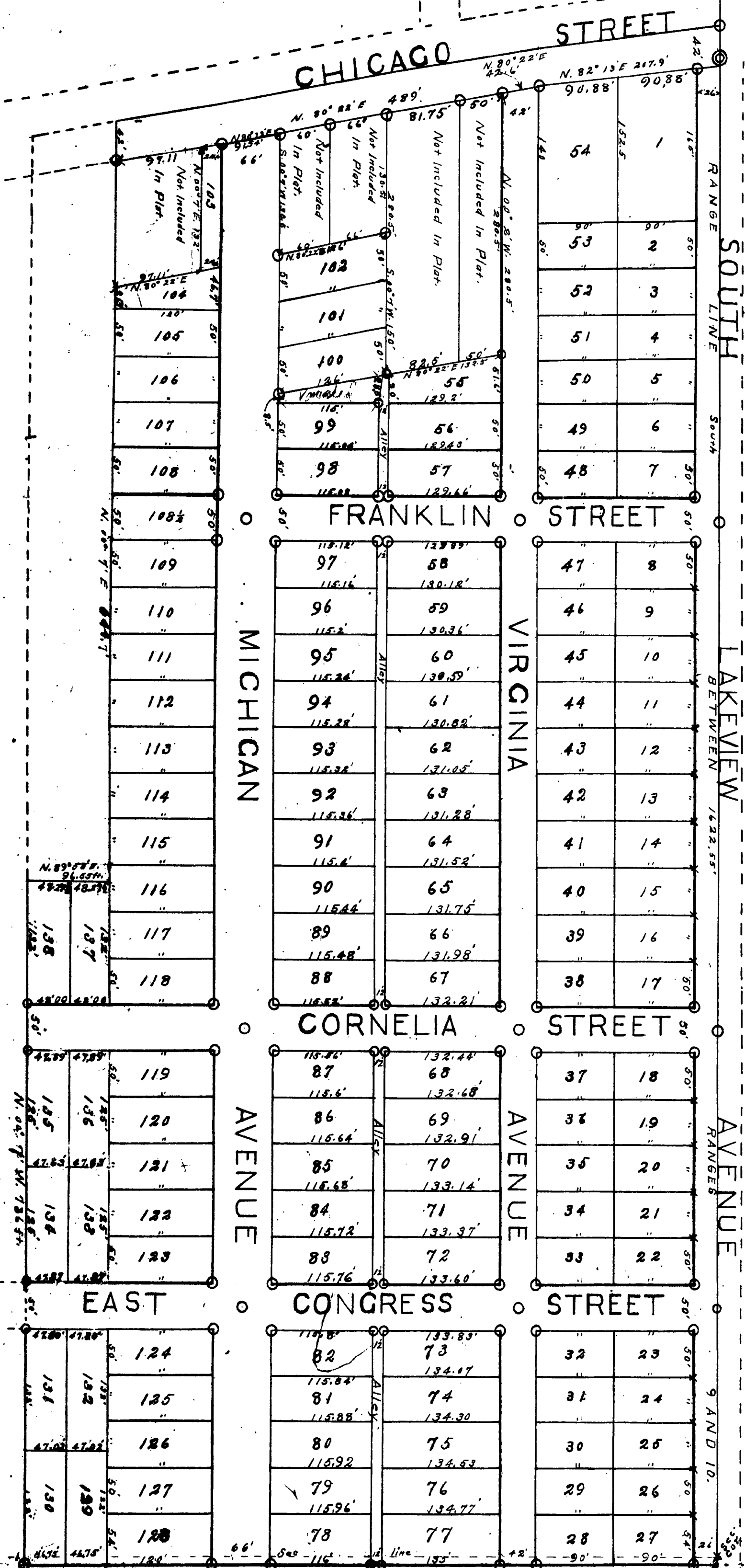
T. C. Carpenter
Alton V. Osborn

STATE OF MICHIGAN,
COUNTY OF ST. JOSEPH,

On this 10th day of June, 1912, before me, a notary public in and for said county, personally appeared the above named Henry R. Osbon, Emma V. Osbon and Sheridan Osbon, known to me to be the persons who executed the above dedication, and acknowledged the same to be their free act and deed.

My commission expires
Jan. 14th 1915
T. C. Carpenter
Notary Public.

REGISTER'S OFFICE,
COUNTY OF ST. JOSEPH
Received for Record, this 24th
day of July, A. D. 1912
at 8 o'clock P. M., and Recorded
in Vol. 108 Plats
Page 57
H. H. Newberry
Register of Deeds



Dimensions given in feet & decimals

Sec. 12

STEEL SHAFTING 4 X 1/2 SET IN
RANGE LINE 95' NORTH OF SOUTH
LINE OF CHICAGO STREET.

For location of Alley between lots 99 and 100
See plat 215 of Block, page 278
for location of Alley South Franklin St
to south lots 78-117 See Mass. Vol. 10 Pg. 140

Initial Point, 100's
from S.E. corner Sec. 12