

Examined and Approved  
JUL 8- 1913

*Charles H. Hurrey*  
Deputy Auditor General

# PLAT OF GROVE'S ADDITION TO THE

City of Sturgis, St. Joseph Co Michigan

## DESCRIPTION OF LAND PLATTED

The land embraced in the annexed plat of Groves Addition to the City of Sturgis, St. Joseph County, Michigan, is described as follows: Beginning 264 feet south and 187 feet west of the north-east corner of the north-east quarter of section 12, in township 8 south and range 10 west, St. Joseph County, Michigan, and running thence west 308 feet to the east line of Maple Avenue, in the City of Sturgis, thence south along the east line of Maple Avenue, 368 feet, thence east 129 feet, thence south 64 feet, thence east 179 feet, thence north 432 feet, to beginning.

## SURVEYOR'S CERTIFICATE.

I hereby certify that the plat heron delineated is a correct one, and that permanent monuments consisting of steel tubing 1 inch in diameter, by 18 inches in length have been planted at points marked thus (o) as there on shown, at all angles in the boundaries of the land platted, and at all intersections of streets.

## COUNTY TREASURER'S CERTIFICATE RELATING TO TAXES.

Office of County Treasurer Centerville Mich. June 7<sup>th</sup> 1913.  
St. Joseph County

I hereby Certify that there are no tax liens or titles held by the State on the lands described above, and that there are no tax liens or titles held by individuals on said lands for the five years preceeding the 2<sup>nd</sup> day June 1913, and that the taxes for said period of five years are paid, as shown by the records of this office.

*Jacob B. Schmitt* County Treasurer,

## DEDICATION

Know All Men By These Presents, That we, Noah O. Grove and Lula M. Grove, his wife, as proprietors, have caused the land embrace in the annexed plat to be surveyed, laid out and platted to be known as Groves Addition to the City of Sturgis, St. Joseph County, Michigan, and that the Streets as shown on said plat are hereby dedicate to the use of the public

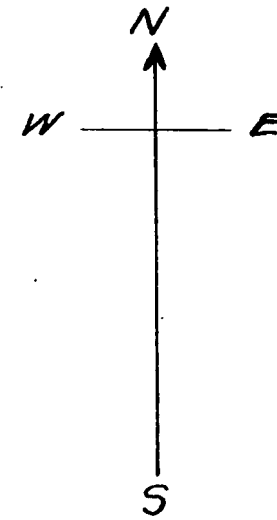
Signed and sealed in the presence of  
*Noah O. Grove* L S  
*Geo. A. Eagleton*  
*Gerald E. Swihart* *Lula M. Grove* L S

State of Michigan }  
County of St. Joseph, } ss on this 28<sup>th</sup> day of May 1913. Before me a  
Notary Public in and for said County, personally came  
the above named Noah O. Grove and Lula M. Grove, his wife, known to me to  
be the persons who executed the above dedication, and acknowledged the same  
to be their free act and deed.  
*Gerald E. Swihart*  
Notary Public, St. Joseph Co., Mich.  
My commission expires April 18<sup>th</sup> 1915.

## Certificate of Municipal Approval.

This plat was approved by the Common Council of the City of Sturgis at a meeting held, June 7<sup>th</sup> 1913

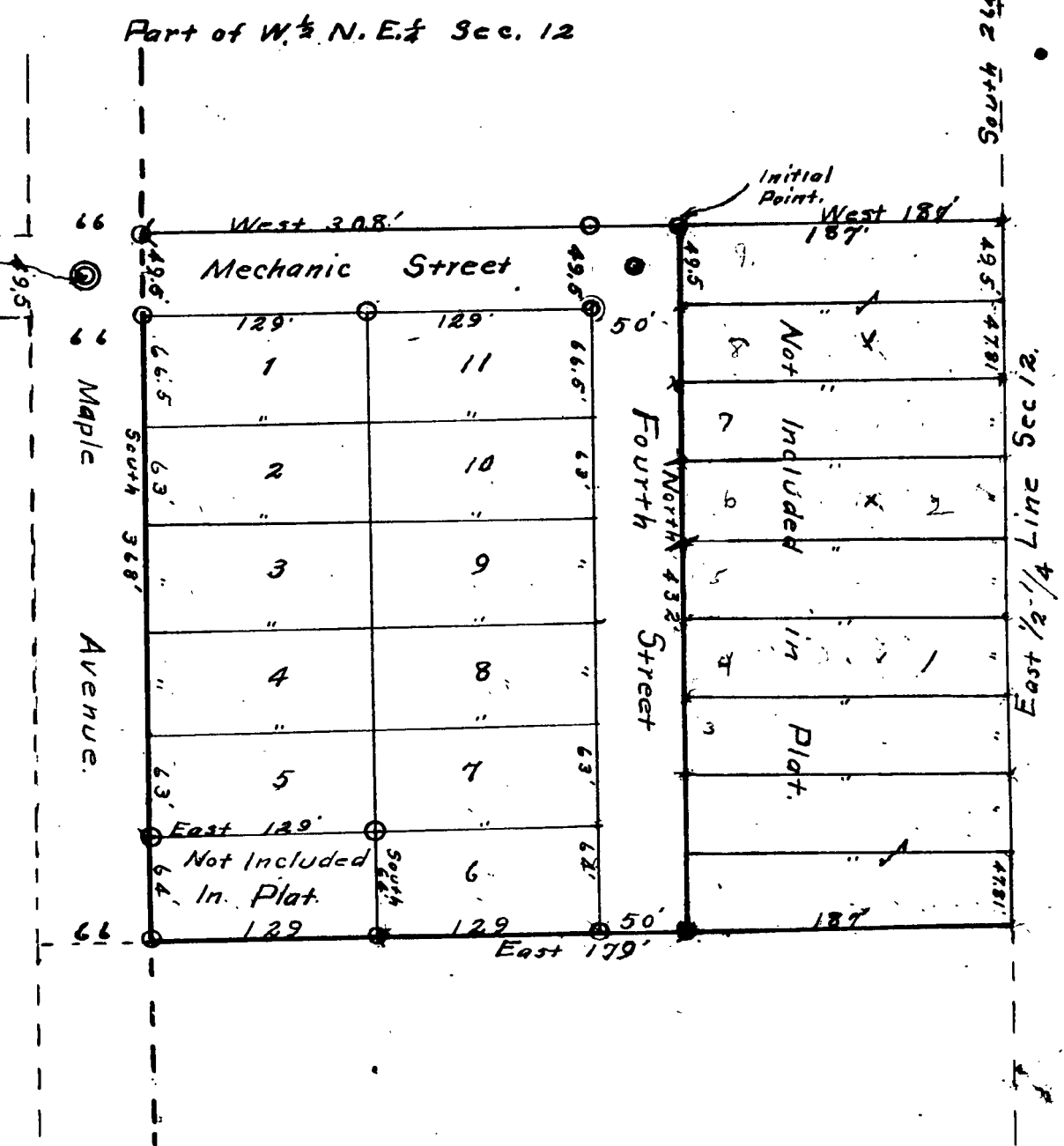
*C. H. Treeland* Mayor  
*Charles W. Lipp*  
*Felix Laska*



Scale. 100' = 1"

Dimensions given in feet and decimals.

o Tile, Intersection of center lines of Mechanic Street and Maple Avenue.



REGISTER'S OFFICE,  
COUNTY OF ST. JOSEPH.  
Received for Record, this 9<sup>th</sup>  
day of July A.D. 1913  
at 2 o'clock P.M., and Recorded  
in Vol. 1, Plate of Deeds,  
on Page 110  
*W. H. Simpson*  
Register of Deeds.