

# PLAT OF ELECTRIC COURT

Sturgis, St. Joseph County, Michigan

Examined and Approved  
OCT 22 1912  
Law. P. H. ...  
Deputy Auditor General

The land embraced in the annexed plat of Electric Court, Sturgis, St. Joseph County, Michigan, is described as follows: Beginning 380 feet North of Southwest corner of East half of the Southeast quarter of section one, in township eight South, of range ten west, St. Joseph County, Michigan, and running thence East 545.49 feet, thence North 18 min. west 714 feet, thence west 118.5 feet, thence South 19 min. east 12.9 feet, thence West 16.5 feet, thence North 114.3 feet, thence South 89 deg. 19 min. West 85.2 feet, thence South 42.5 feet, thence West 16.5 feet, thence South 27.8 feet, thence South 29 deg. 20 min. West 165 feet, thence South 50 feet, thence North 79 deg. 20 min. East 165 feet, thence South 250 feet to beginning.

## SURVEYOR'S CERTIFICATE

I hereby certify that the plat hereon delineated is a correct one, and that permanent monuments consisting of steel tubing 18 inches in length by 1 inch in diameter have been planted at points marked thus (O), as thereon shown, at all angles in the boundaries of the land platted, and at all intersections of streets.

Geo. A. Eagleton, Surveyor

## Certificate of Municipal Approval

This plat was approved by the Common Council of the City of Sturgis, St. Joseph County, Michigan, at a meeting held ... 1912.

H. L. ... Mayor  
Charles F. ... Clerk

## County Treasurer's Certificate Relating to Taxes

Office of County Treasurer, St. Joseph County, Centreville, Mich., Sept. 20, 1912.

I hereby certify that there are no tax liens or titles held by the State on the lands described above, and that there are no tax liens or titles held by individuals on said lands for the five years preceding the ... day of ... 1912, and that the taxes for said period of five years are paid, as shown by the records of this office.

William Harrison, County Treasurer

## Dedication

KNOW ALL MEN BY THESE PRESENTS, that we, Cora J. Brown, and Charles F. Brown, as proprietors of lots ... to ... inclusive, and Henry Ely, as proprietor of lots ... to ... inclusive and Elizabeth Ely, his wife, have caused the land embraced in the annexed plat, to be surveyed, laid out and platted, to be known as Electric Court, Sturgis, St. Joseph County, Mich., and that the streets as shown on said plat are hereby dedicated to the use of the public.

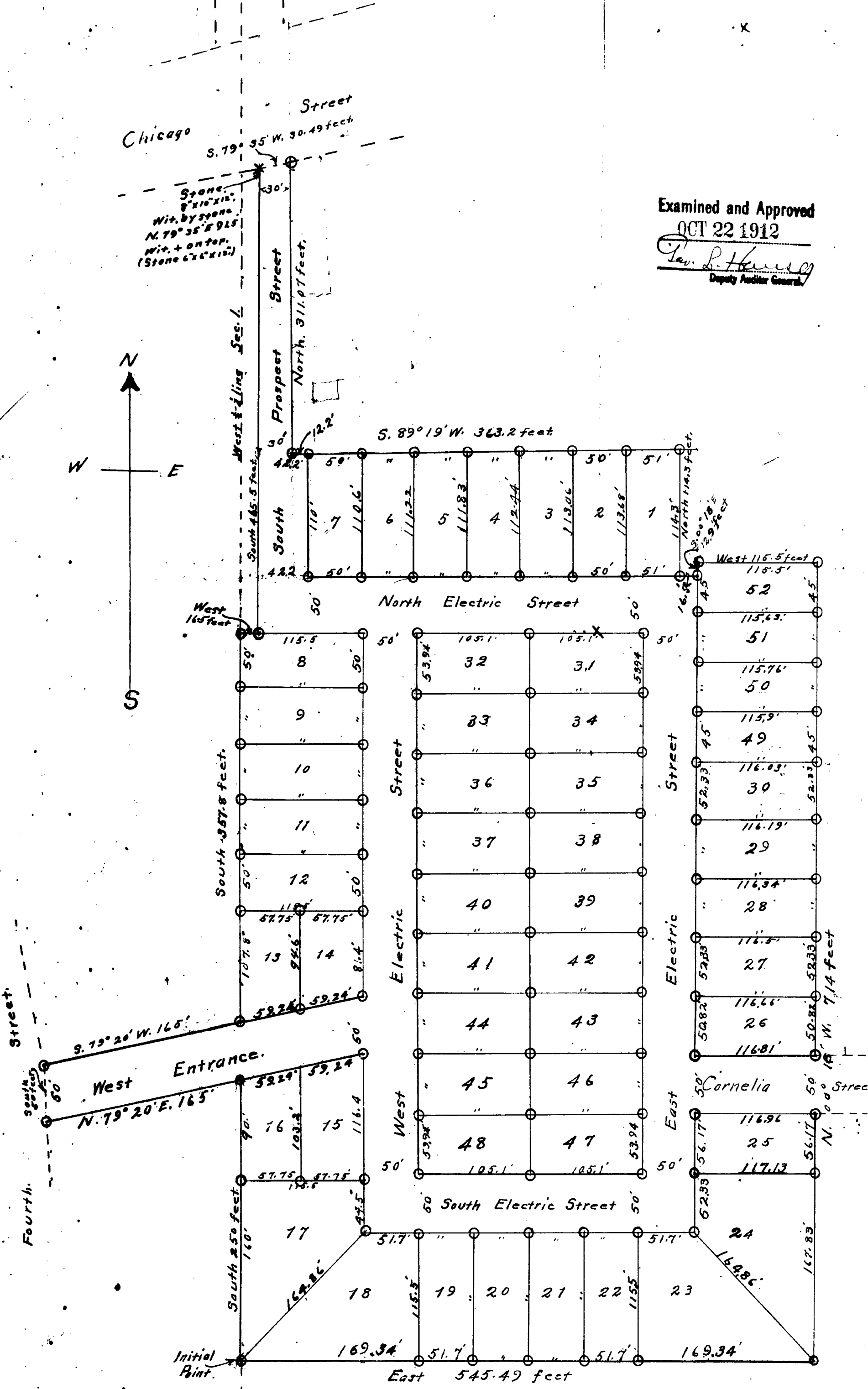
Signed and Sealed in the Presence  
Cora J. Brown, L. S.  
Charles F. Brown, L. S.  
Valcott Carpenter, L. S.  
Jennie M. Phillips, L. S.  
Elizabeth Ely, L. S.

STATE OF MICHIGAN  
County of St. Joseph

On this ... day of ... 1912, before me, a Notary Public, in and for said county, personally came the above named Cora J. Brown, and Charles F. Brown, Her husband, and Henry Ely and Elizabeth Ely, his wife, known to me to be the persons who executed the above dedication and acknowledged the same to be their free act and deed.

Valcott Carpenter, Notary Public, St. Joseph Co., Michigan.

My commission expires ... 1915



Dimensions given in feet and decimals.

Scale: 1" = 50'  
160' 0" 160'

REGISTER'S OFFICE,  
COUNTY OF ST. JOSEPH

Received for Record, this 25th day of Oct. A.D. 1912 at 8 o'clock A.M. and Recorded in Vol. 19 of Deeds, on Page 59

Register of Deeds