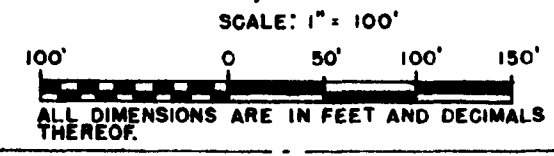


*As Amended - Resolution of Amalgamation recorded in Liber 373 of Records pp 488-914 incl*

ORIGINAL

# ORCHARDLANE SUBDIVISION

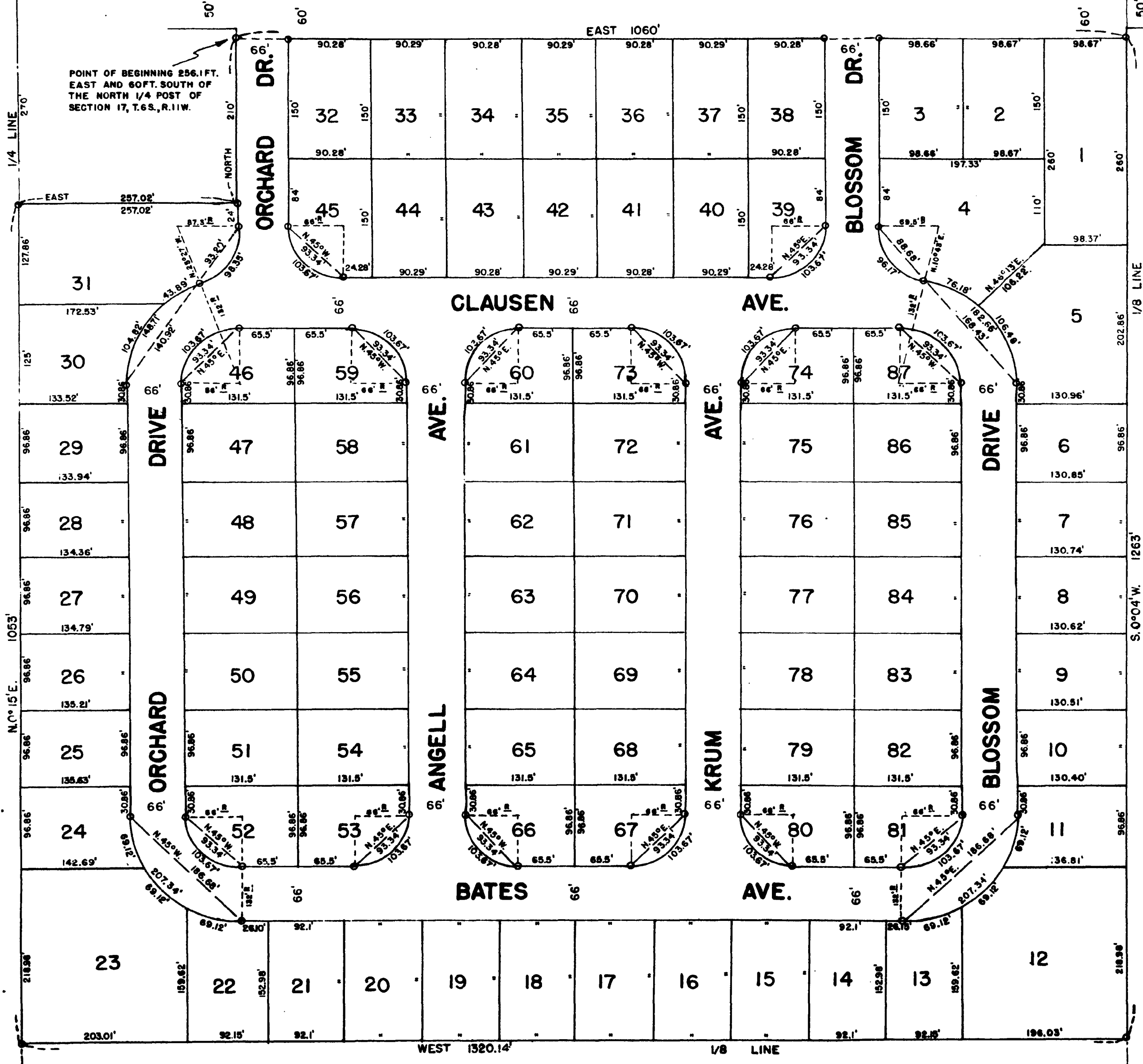
IN THE NORTHEAST QUARTER OF SECTION 17,  
TOWN 6 SOUTH, RANGE II WEST, LOCKPORT  
TOWNSHIP, ST. JOSEPH COUNTY, MICHIGAN.



N. 1/4 POST SEC. 17,  
T.6S., R.11W.

of HIGHWAY M-60

1/8 POST  
SEC. LINE



# ORCHARDLANE SUBDIVISION

EXAMINED AND APPROVED  
Date NOV 1 1954

*John B. Martin*  
John B. Martin,  
AUDITOR GENERAL

By *D. J. Mack*  
D. J. Mack  
Plat Engineer

IN THE NORTHEAST QUARTER OF SECTION 17,  
TOWN 6 SOUTH, RANGE 11 WEST, LOCKPORT  
TOWNSHIP, ST. JOSEPH COUNTY, MICHIGAN.

### DEDICATION

KNOW ALL MEN BY THESE PRESENTS, that we, Lee Roy M. Angell and Opal D. Angell, his wife, Noel T. Krum and Vera L. Krum, his wife, as proprietors, have caused the land embraced in the annexed plat to be surveyed, laid out and platted, to be known as "Orchardlane Subdivision", in the Northeast 1/4 of Section 17, T.6 S., R.11 W., Lockport Township, St. Joseph County, Michigan, and that the streets as shown on said plat are hereby dedicated to the use of the public.

### DESCRIPTION OF LAND PLATTED

The land embraced in the annexed plat of "Orchardlane Subdivision" in the Northeast 1/4 of Section 17, T.6 S., R.11 W., Lockport Township, St. Joseph County, Michigan, is described as follows: Beginning 256.1 feet east and 60 feet South of the North 1/4 post of Section 17 and running thence East 1060 feet; thence South 0 degrees 04 minutes West 1263 feet; thence West 1320.14 feet; thence North 0 degrees 15 minutes East 1053 feet; thence East 257.02 feet; thence North 210 feet to beginning.

### SURVEYOR'S CERTIFICATE

I hereby certify that the plat hereon delineated is a correct one, and that permanent monuments consisting of iron rods at least one half inch in diameter and 48 inches in length, encased in concrete cylinders four inches in diameter and 48 inches in length, have been set at points marked thus (O) as thereon shown at all angles in the boundaries of the land platted, at all intersections of the lines of streets and at intersections of the lines of streets with the boundaries of the plat.

*Earl N. James*  
Earl N. James  
Registered Professional Engineer

### MUNICIPAL APPROVAL

This plat was approved by the Township Board of the Township of Lockport at a meeting held August 27th 1954

*Louis Haldy*  
Louis Haldy (Clerk)

### CERTIFICATE AS TO STATE TRUNK LINE OR FEDERAL AID ROADS

We hereby certify that said plat appears to include land located on a state trunk line or federal aid road.

*Eleanor C. Russell*  
Eleanor C. Russell, (County Register of Deeds)  
*John W. Marvin*  
John W. Marvin, (County Clerk)  
*Eva M. Brumbaugh*  
Eva M. Brumbaugh, (County Treasurer)  
*Richard Olin*  
Richard Olin, (County Drain Commissioner)

### COUNTY TREASURER'S CERTIFICATE

Office of County Treasurer, ST. JOSEPH County. I hereby certify, that there are no tax liens or titles held by the State on the lands described hereon, and that there are no tax liens or titles held by individuals on said lands, for the five years preceding the thirty first day of August 1954 and that the taxes for said period of five years are all paid, as shown by the records of this office.

This certificate does not apply to taxes, if any, now in process of collection by township, city or village collecting officers.  
*Eva M. Brumbaugh*  
EVA M. BRUMBAUGH, (County Treasurer)

### APPROVAL BY BOARD OF COUNTY ROAD COMMISSIONERS

This plat has been examined and was approved on the 19th day of August 1954 by the St. Joseph County Board of Road Commissioners.

*Ivan Bent*  
Ivan Bent (Chairman)  
*Paul L. Ahlgren*  
Paul L. Ahlgren (Member)  
*Noyes T. Percy*  
Noyes T. Percy (Member)

### APPROVAL BY COUNTY PLAT BOARD

This plat was approved on the 3rd day of September 1954 by the St. Joseph County Plat Board

*Eleanor C. Russell*  
Eleanor C. RUSSELL, (County Register of Deeds)  
*John W. Marvin*  
JOHN W. MARVIN, (County Clerk)  
*Eva M. Brumbaugh*  
EVA M. BRUMBAUGH, (County Treasurer)  
*Richard Olin*  
RICHARD OLIN, (County Drain Commissioner)

Signed and Sealed in the Presence of:  
*Jay R. White* (Witness) *Lee Roy M. Angell* (L.S.)  
*Margaret J. White* (Witness) *Opal D. Angell* (L.S.)  
*Noel T. Krum* (L.S.)  
*Vera L. Krum* (L.S.)

### ACKNOWLEDGMENT

STATE OF MICHIGAN  
County of St. Joseph ss.  
On this 24th day of July 1954, before me, a Notary Public in and for said County, personally came the above named Lee Roy M. Angell, Opal D. Angell, his wife, Noel T. Krum and Vera L. Krum, his wife known to me to be the persons who executed the above dedication, and acknowledged the same to be their free act and deed.  
*George D. Bradford*  
George D. Bradford  
Notary Public, St. Joseph County  
My Commission expires 8/25/56

REGISTER'S OFFICE,  
COUNTY OF ST. JOSEPH,  
STATE OF MICHIGAN.  
Received for Record, this 1st day of November A. D. 1954 at 3:00 o'clock P.M., and Recorded in Vol. 3 of Plats on Pages 39 and 40  
*Eleanor C. Russell*  
Register of Deeds

APPROVED  
*Charles M. Ziegler*  
CHARLES M. ZIEGLER  
STATE HIGHWAY COMMISSIONER