

BOYER'S

ADDITION
TO
THREE RIVERSScale 100 feet to one inch
100' = 1" = 100'

DEEDS KNOWN

A part of the N¹/₂ of the S.W. 1/4 of Section 19 T. 1. S. 11 N. being in St. Joseph Co. Michigan and bounded as follows, beginning at a point on the S. 1/2 line of said section No. 19. 2033 1/2 ft. East of the west line of said section No. 19 and running thence N. 15° W. 1022.3 feet, thence N 1 1/2° E 82.4 ft. thence N 7 1/2° E. 135.5 ft. thence S 15° E. 160.9 ft. thence West 115.5 ft. to place of beginning.

I hereby certify that I made the survey of Boyer's Addition to Three Rivers, and that the plat hereon delineated is a correct one and that permanent monuments consisting of gas pipe stakes have been planted at points marked thus (o) as shown thereon at all angles in the boundaries of the land platted and at all intersections of streets. The monument at X, was set in place of an old blackwalnut *since found in position.*

Samuel S. Reed, Engineer

DEDICATION

Know All Men by these Presents that we Sidney E. Boyer and Mattie Boyer, husband and wife, as proprietors, have caused the land embraced in the annexed plat to be surveyed, laid out and platted, to be known as Boyer's Addition to Three Rivers, and that the streets as shown on said plat are hereby dedicated to the use of the public and sealed in presence of

Deputy Clerks
Carl W. Schellhouse

Sidney E. Boyer [SEAL]
Mattie Boyer [SEAL]

State of Michigan } ss. On this 12 day of November 1906 before me a Notary Public in and for said County personally came the above named Sidney E. Boyer and Mattie Boyer, known to me to be the persons who executed the above Dedication and acknowledged the same to be their free act and deed
Carl W. Schellhouse, Notary Public
My term expires Nov. 12, 1906

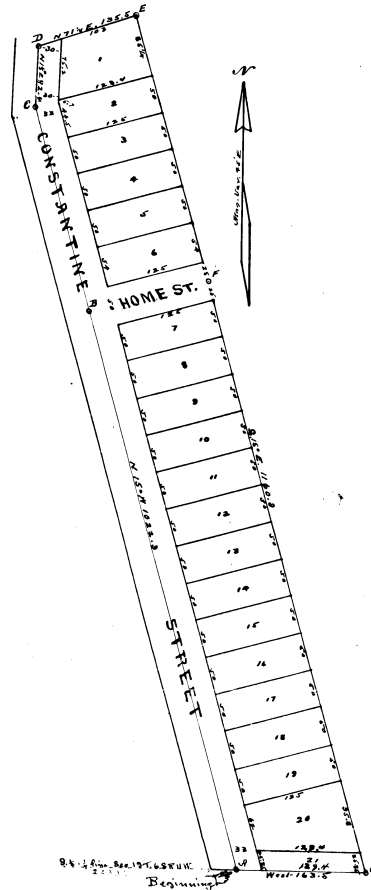
Examined and Approved
Dec 14 1906
John P. Wilkinson
Deputy Auditor General.

State of Michigan } ss. We W H VanBuren Register of Deeds, and Samuel S. Reed, Engineer, hereby certify that we have each carefully compared this copy with the original plat of Boyer's Addition to Three Rivers and that it is an exact copy thereof and of the whole of such original map or plat.

W H VanBuren Register of Deeds.
Samuel S. Reed Engineer.

State of Michigan } ss. We W H VanBuren Register of Deeds, and Samuel S. Reed, Engineer, hereby certify that we have each carefully compared this transcript with the copy of the original plat of Boyer's Addition to Three Rivers, now of record in the office of the Register of Deeds, and that it is an exact copy thereof and of the whole of such record.

W H VanBuren Register of Deeds.
Samuel S. Reed Engineer.



I hereby certify that I have examined the records in my office relating to the location of lands in the within inclosure and from such examination it appears that the State and County taxes have been fully paid for the five years preceding the date of said instrument.
DEC - 7 1906
W H VanBuren
County Treasurer.

REGISTER'S OFFICE,
COUNTY OF ST. JOSEPH.

Received for Record, this 7th
day of Dec A. D. 1906
at 12 o'clock P. M., and Recorded
in Vol. 1 of Plats of Deeds,
on Page 199

W H VanBuren
Register of Deeds.

RECEIVED AND FILED,
IN AUDITOR GENERAL'S OFFICE,

Jan 5 1907
John P. Wilkinson
Deputy Auditor General.