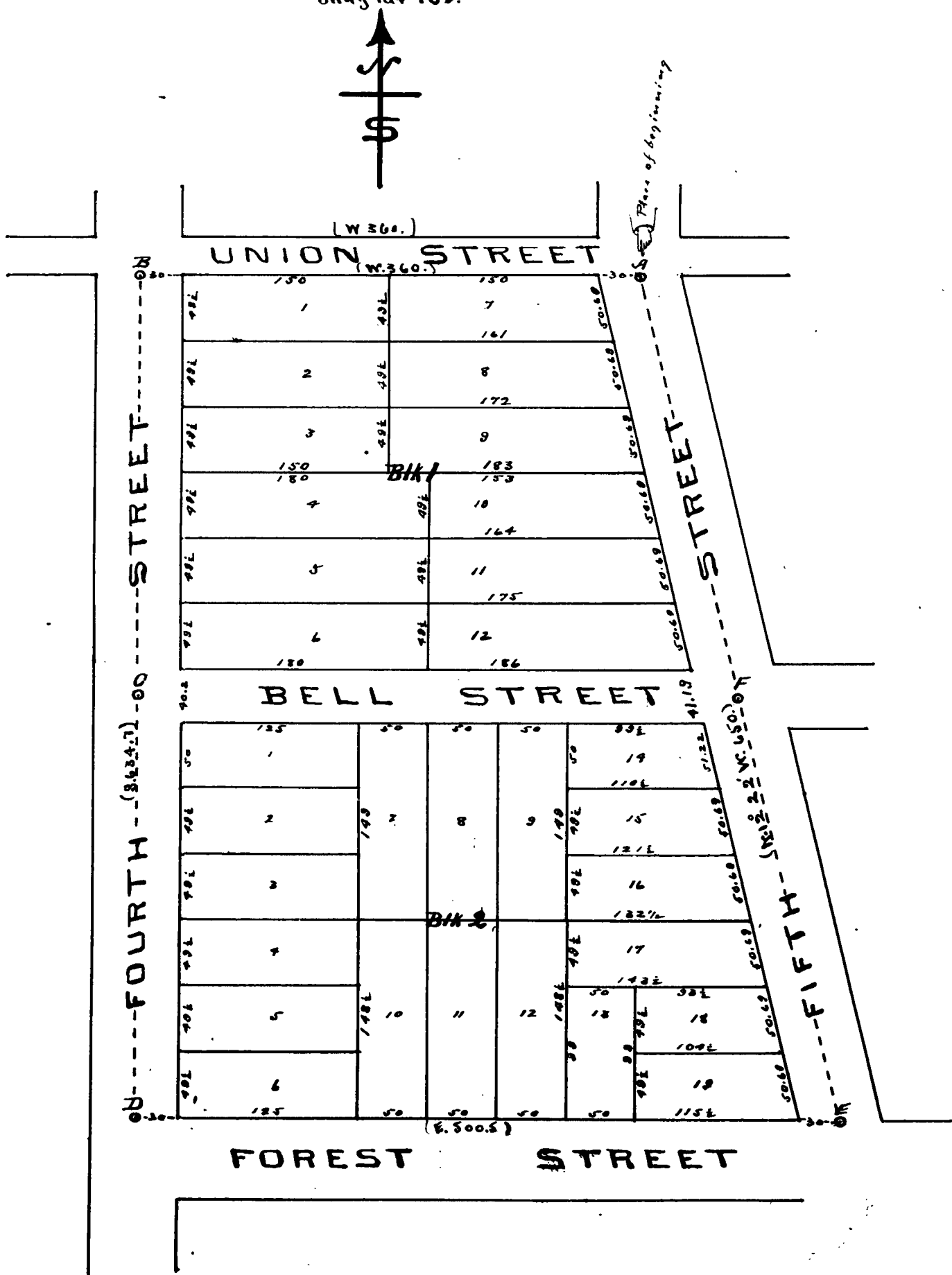


# BELL'S

## ADDITION TO THREE RIVERS

Scale 100 ft. to one inch  
Mag. Var. 40° E.



### Description

A part of the S. 6. 1/4 of Sec. 19, T. 6 S. R. 11 W. in St. Joseph County, Mich., bounded by beginning at a point 1330.85 ft. South and 1340 1/2 ft. West of the quarter corner between Secs. 19 and 20; from said place of beginning the boundary runs west 360 ft. thence south 634.7 ft. thence east 500.5 ft. and thence N 12° 22' W 650 ft. to place of beginning.

I, Samuel S. Reed, do hereby certify that I made the survey of Bell's Addition to Three Rivers, and that the annexed plat is in accordance with the notes of the survey and that permanent monuments, have been planted in the ground at all angles in the boundaries of the land platted and at all interseptions of streets; the exact position of each such monument is indicated on the plat by a small circle, thus (o) each accompanied by a distinguishing letter. The monuments at D and E are gas pipe stakes; the monuments at B, C, J and F, are angle iron stakes, set with the inside point of the angle for the corner.

Samuel S. Reed, Engineer.

Examined & Approved  
August 4, 1906.  
Jno. F. Wilkinson.  
Deputy Auditor General.

I hereby certify that I have examined the records in my office relating to the description of lands in the within instrument and from such examination it appears that the State and County taxes have been fully paid for the five years preceding the date of said instrument.

AUG 14 1906  
J. F. Wilkinson  
County Treasurer.

REGISTER'S OFFICE,  
COUNTY OF ST. JOSEPH.

Received for Record, this 14<sup>th</sup>  
day of Aug. A. D. 1906  
at 3 o'clock P. M., and Recorded  
in Vol. 1 of Plats of Deeds,  
on Page 41

W. H. VanBuren  
Register of Deeds.

### Dedication

Know all Men by these Presents, that we Timothy Bell and Ella Bell, husband and wife and joint owners as proprietors have had the lands embraced in the annexed plat, surveyed, laid out and platted, to be known as Bell's Addition to Three Rivers, and the streets as shown thereon are hereby dedicated to the use of the public.

Signed and sealed . . . . . Timothy Bell Seal  
Ella Bell Seal  
Signed and sealed in presence of Geo. E. Miller  
Ethel Bell

State of Michigan } ss.  
County of St. Joseph }

On this 1<sup>st</sup> day of August 1906, before me a Notary Public in and for said county, personally came the aforesaid Timothy Bell and Ella Bell, known to me to be the persons who executed the foregoing dedication and each acknowledged the same to be their free act and deed.

Geo. E. Miller Notary Public  
My term expires Aug. 8, 1906

State of Michigan } ss.  
County of St. Joseph }

We W. H. VanBuren Register of Deeds, and Samuel S. Reed Engineer, hereby certify that we have each carefully compared this copy with the original plat of Bell's Addition to Three Rivers and that it is an exact copy thereof and of the whole of such original map or plat.

W. H. VanBuren Register of Deeds.  
Samuel S. Reed Engineer.