

# POPLAR PLACE SUBDIVISION, THREE RIVERS,

BEING  
A RESURVEY AND PLAT OF  
BLOCKS 34, 54 & 55 OF BOWMAN'S ADDITION TO  
THREE RIVERS.

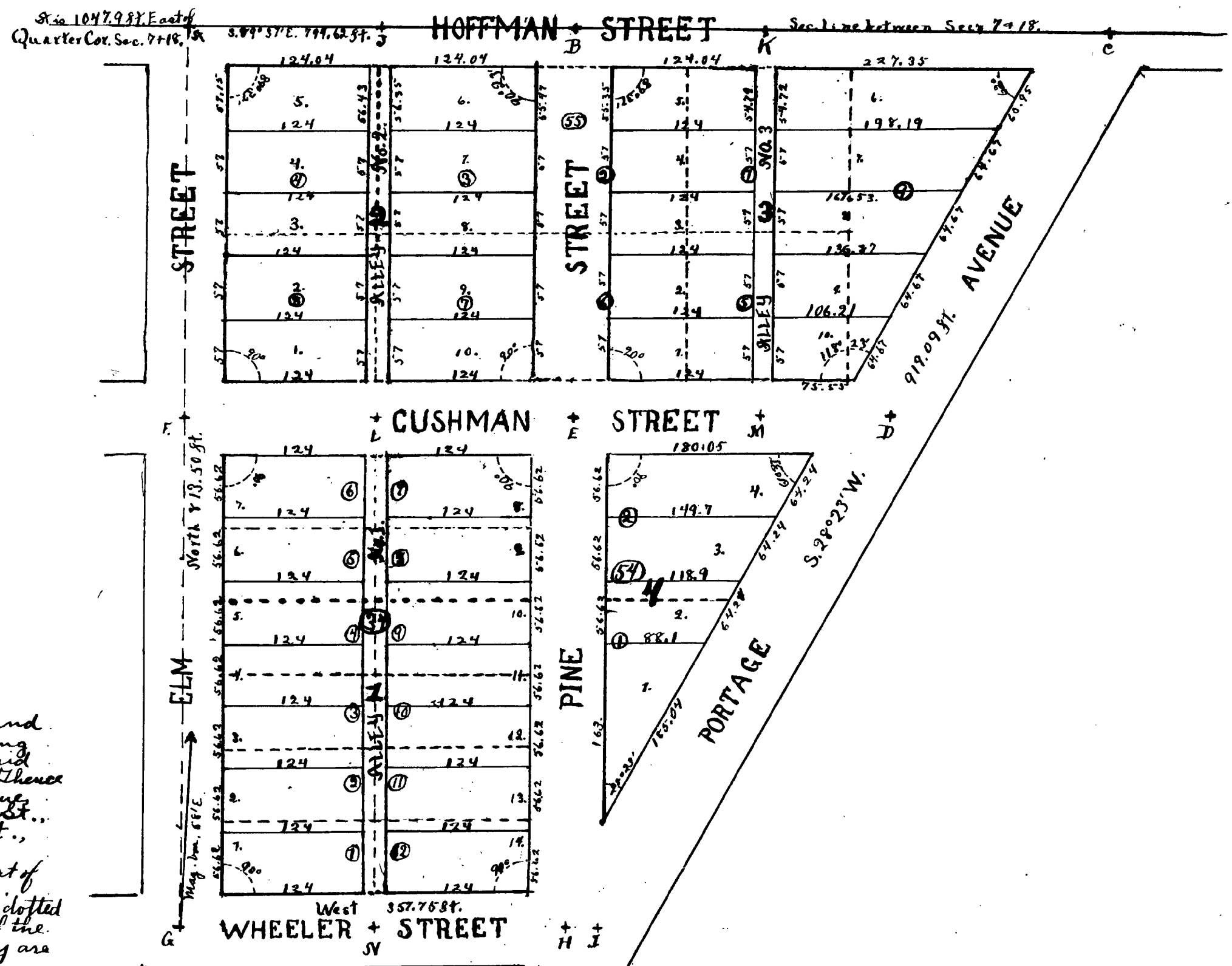
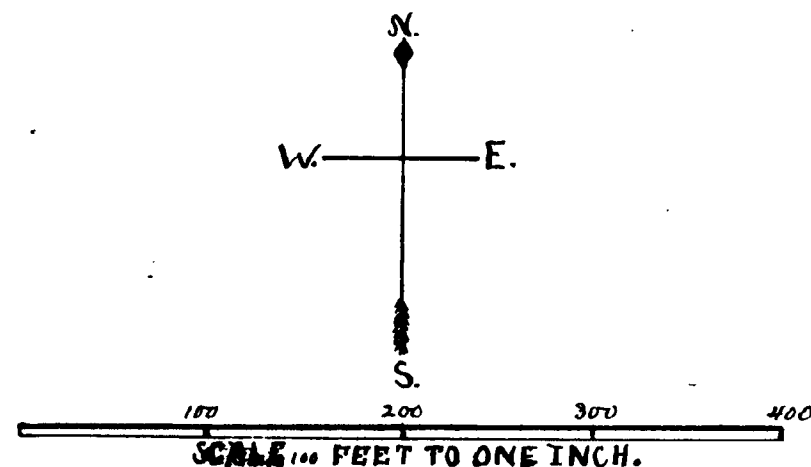


TABLE OF DISTANCES BETWEEN STONES.  
DISTANCES GIVEN IN FEET.

A	B	C	D	E	F	G	H	I	J	K	L	M	N
330.08	794.62				357.15	813.39			165.04	425.12			
464.55	463.65			397	929.51		817.9		165.04	165.14			
347.53	394		277.4	277.4	607.4		462.35	975.09	632.39	292.51	442.4	112.4	
			622.4	330	290		462.35				165	165	
811.20					462.35		397	357.15			165	49.5	
	919.9	325.09			462.35		397	27.75					165
165.04	62.23									330.08	350.51		192.75
165.04	397.57								330.08			330	162.35
			442.4	165	165							330	162.35
			112.4	165	49.5				165	165	192.75	813.39	357.15
						165	165	192.75	813.39	357.15	357.15	357.15	357.15

Portage Ave. is 82 1/2 ft. wide.  
All other streets are 66 ft. wide.  
All alleys are 16 ft. wide.

I, Ralph F. Reed, the surveyor who made the survey and plat of Poplar Place Subdivision, Three Rivers, do hereby certify that the attached plat is correct and in accordance with the notes of the survey and that permanent monuments have been planted at the intersection of all streets and all alleys and streets at points designated S, B, C, D, E, F, G, H, I, J, K, L, M, N on the plat, each particular point being indicated on the plat by a cross (+).  
Ralph F. Reed  
Surveyor.

This is to certify that I find no delinquent taxes on the records in my office on the described property.

B. D. Goodrich, County Treasurer.

EXAMINED AND APPROVED

June 15, 1903  
John E. Wilkinson  
Deputy Auditor General.

REGISTER'S OFFICE.

COUNTY OF ST. JOSEPH,  
Received for Record, this 17th day of June, A. D. 1903,  
at 12 o'clock P. M., and Recorded in Vol. of Plats of Deeds, on Page 4.

I hereby certify that I have seen the records in my office relating to the description of lands in the within instrument and from such examination it appears that the State and County taxes have been fully paid for the five years preceding the date of said instrument.  
JUN 17 1903  
Centerville, Mich.

B. D. Goodrich  
County Treasurer.

## DEDICATION.

Be it known that we, John R. Avery, Charles B. Cox & Norman W. Garrison, all unmarried, the owners of the lands herein described have caused said lands to be resurveyed and plat as Poplar Place Subdivision, Three Rivers, that we hereby donate Pine St. between Cushman St. and Hoffman St. and all alleys as shown on the plat to the use of the public. All other streets shown on the plat have been previously dedicated to the use of the public by the parties making the original plat of Bowman's Addition to Three Rivers.

Witness my hand and seal this 15th day of June, 1903, at Centerville, Mich.  
John R. Avery (seal)  
Charles B. Cox (seal)  
Norman W. Garrison (seal)

Witnesses  
Chas. Sessions  
Wm. E. Barnard

STATE OF MICHIGAN, ss. I, Wm. E. Barnard, County of ST. JOSEPH, a Notary Public in and for the State of Michigan, do hereby certify that on this the thirteenth day of June, 1903, John R. Avery, Charles B. Cox and Norman W. Garrison, all unmarried, being personally known to me as the persons who signed and executed the foregoing Dedication, did appear before me and acknowledge the same to be their own free act and deed.

Wm. E. Barnard Notary Public.

Being a part of the northeast quarter of section no. 18 T. 6 S. R. 11 W. and bounded by following the center lines of streets as follows, commencing at a stone 1047.9 ft. east of the quarter corner between sections 7 and 18 said stone being set at the intersection of the center lines of Elm St. and Hoffman St., thence S. 89° 37' East 474.62 ft. to stone at intersection of Hoffman St. and Portage Ave., thence S. 28° 23' W. 419.09 ft. to stone at intersection of Portage Ave. and Wheeler St., thence West 357.75 ft. to stone at intersection of Wheeler St. and Elm St., thence North 813.5 ft. to place of beginning.

All street and street lines remain the same as on the original plat of Bowman's Addition except Pine St. between Cushman St. and Hoffman St. which is a new street. All original lot lines are indicated on the plat by dotted (- - -) lines, except where the original lines coincide with the line of the resurvey. The block and lot numbers, belonging to the original survey are each inclosed by a circle (O).

In making the survey of Poplar Place Subdivision, Three Rivers permanent monuments were found planted in the ground as follows, at  
(A) Stone at intersection of the center lines of Hoffman St. and Elm St.  
(B) Stone at intersection of Hoffman St. and Portage Ave.  
(C) Stone at intersection of Hoffman St. and Elm St.  
(D) Stone at intersection of Hoffman St. and Wheeler St.  
(E) Stone at intersection of Hoffman St. and Elm St.

Permanent monuments were planted at all remaining intersections of streets and streets and alleys as follows, at  
(F) Stone at intersection of the center lines of Pine St. and Hoffman St.  
(G) Stone at intersection of the center lines of Portage Ave. and Cushman St.  
(H) Stone at intersection of the center lines of Cushman St. and Pine St.  
(I) Stone at intersection of the center lines of Wheeler St. and Pine St.  
(J) Stone at intersection of the center lines of Hoffman St. and Portage Ave.  
(K) Stone at intersection of the center lines of Hoffman St. and Alley No. 2.  
(L) Stone at intersection of the center lines of Cushman St. and Alley No. 3.  
(M) Stone at intersection of the center lines of Cushman St. and Alley No. 1.  
(N) Stone at intersection of the center lines of Wheeler St. and Alley No. 1.

STATE OF MICHIGAN, ss. we, M. W. Willett, Register of Deeds, and Ralph F. Reed, Surveyor, hereby certify that we have each carefully compared this copy with the original plat of Poplar Place Subdivision, Three Rivers and that it is an exact copy thereof and of the whole of such original map and plat.

M. W. Willett  
Ralph F. Reed  
Register of Deeds  
Surveyor.