

LYMAN

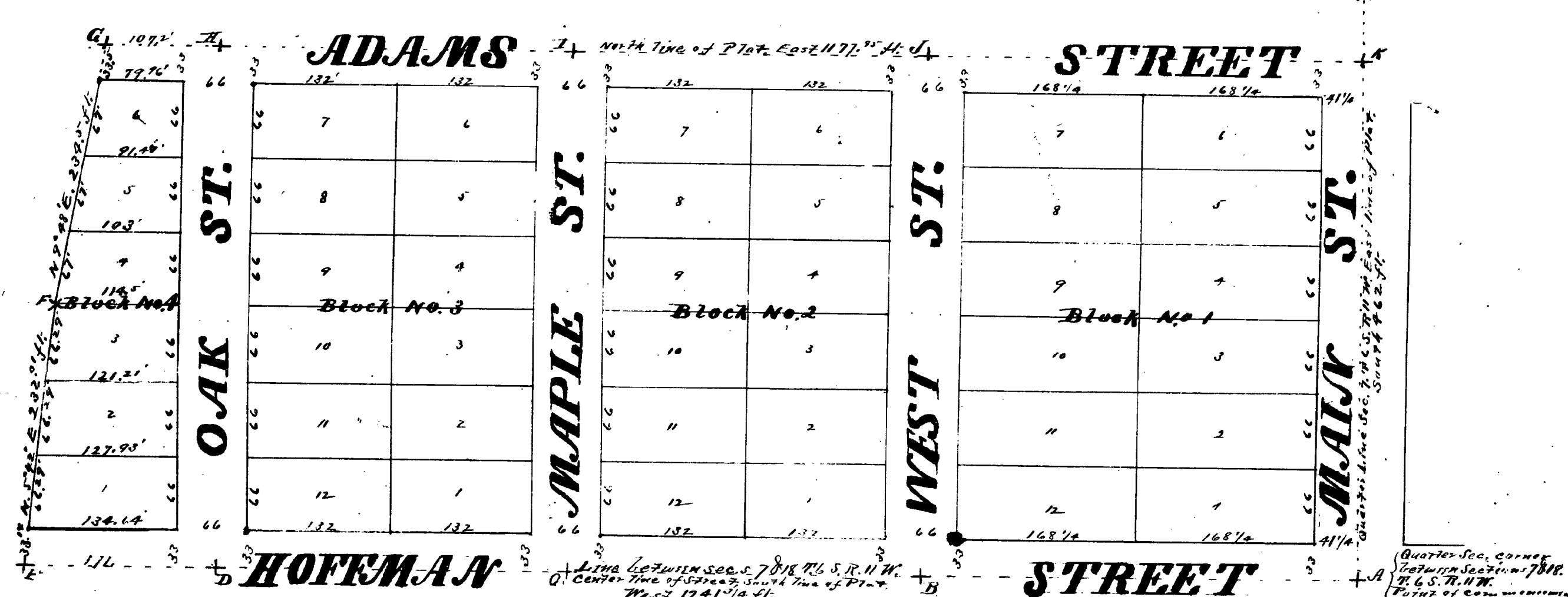
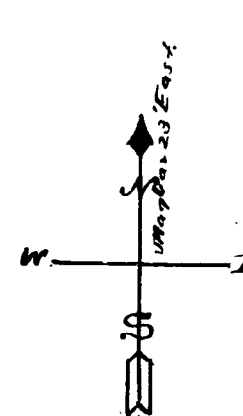
ADDITION

TO

THREE RIVERS

Scale one inch to 100 feet.

Description. A part of the S.E. 1/4 of the S.W. 1/4 of Section No. 7, T. 6 S. R. 11 W.; bounded by commencing at the quarter Sec. corner between sections 7 & 18, Thence West on the section line 1241 1/4 ft., to E. on plat, thence N. 5° 42' E. 232.0' ft. to B, on plat, thence N. 7° 48' E. 254.1' ft. to C, on plat, thence East 1177.9' ft. to H, on plat, thence South on the quarter line 462 ft. to A, on plat at point of commencement, containing 12.87 Acs.



DEDICATION.
Know All Men by these Presents, that we Effie Lyman as proprietor and Orson M. Lyman, her husband have caused the land embraced in the annexed plat to be surveyed laid out and platted, to be known as Lyman Addition to Three Rivers, and that the streets as shown on said plat are hereby dedicated to the use of the public.

Signed and sealed in presence of
 J. C. Evans }
 L. O. Miller }
 Effie Lyman [L.S.]
 Orson M. Lyman [L.S.]

STATE OF MICHIGAN } ss.
 County of St. Joseph }
 On this 30th day of August 1901
 before me a Notary Public in and for said county, personally
 came the above named Effie Lyman and Orson M.
 Lyman her husband, known to me to be the persons who
 executed the above dedication and acknowledged the same
 to be their free act and deed.

L. O. Miller
 Notary Public, St. Joseph Co., Michigan

I hereby certify that I have examined the records in my office relating to the description of lands in the within instrument and from such examination it appears that the State and County taxes have been fully paid for the five years preceding the date of said instrument.
 Detroit, Mich. SEP 16 1901
 J. D. Goodrich
 County Treasurer.

REGISTRAR'S OFFICE } ss.
 County of St. Joseph }
 Received for Record this 18th day of September A.D. 1901
 at 11 o'clock A.M. and Recorded in Vol. of Plat. of Deeds, on Page 22

W. H. Cole
 Registrar of Deeds

STATE OF MICHIGAN } ss.
 County of St. Joseph }
 We W. H. Cole
 and Samuel S. Reed Surveyor, here by certify that we have each
 carefully compared the annexed copy with the plat of Lyman
 Addition to Three Rivers and that it is an exact copy thereof and of the whole
 of such original map or plat.

W. H. Cole }
 Samuel S. Reed }
 Register of Deeds }
 Surveyor }

I hereby certify that the plat hereon delineated is a correct one and that permanent monuments, consisting of stakes each marked with a cross (+), except the stone at the 1/4 point, A, on plat, which is a pointed stone, have been planted at points marked thus (+) and designated by the letters, A, B, C, D, E, F, G, H, I, J & K as thereon shown and angles in the boundaries of the land platted and at all intersections of streets.

Samuel S. Reed, Surveyor.

Examined and Approved
 Terry E. Powers,
 Auditor General
 Sept. 7th 1901