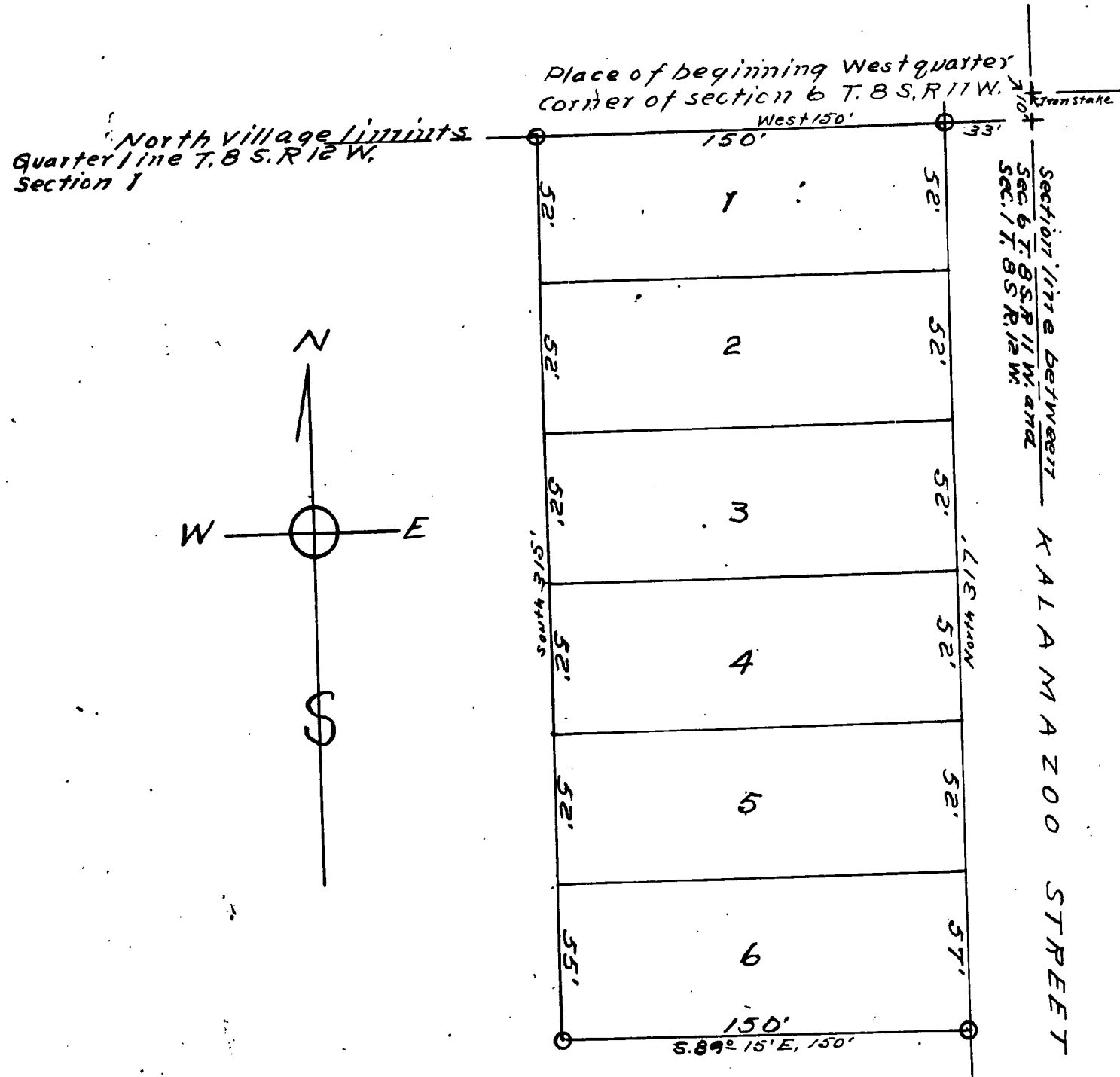


Jan - 27 - 1920
 J. L. Hunter

PLAT OF EDDY PAPER COMPANY ADDITION

TO THE VILLAGE OF WHITE PIGEON
 ST. JOSEPH COUNTY MICHIGAN
 SCALE 1-INCH=50 FEET

ALL DIMENSIONS ARE IN FEET OR DECIMALS THEREOF
 WILL P. MCCOY
 ENGINEER



DESCRIPTION OF LAND PLATTED.

The land embraced in the annexed plat of the EDDY PAPER COMPANY Addition to the Village of WHITE PIGEON St. Joseph County Michigan is described as follows Beginning at a point 10 Feet south and 33 feet west of the west Quarter Corner of section 6 T. 8 S. R. 11 W. thence west 150 feet thence south 317 feet thence S. 89° 15' E. 150 feet thence north 317 feet to place of beginning.

SURVEYORS CERTIFICATE.

I hereby certify that the plat hereon delineated is a correct one, and that permanent monuments consisting of concrete posts 6"x6" square 24" long have been planted at points marked thus O, as there on shown at all angles in boundaries of the land platted.

Will P. McCoy Engineer.

CERTIFICATE OF MUNICIPAL APPROVAL.

This plat was approved by the Common Council of the village of WHITE PIGEON at a meeting held on the 22^d day of December A. D. 1919

Charles W. Kotelnik Clerk.

CERTIFICATE OF APPROVAL BY COUNTY BOARD.

This plat was approved on the 20th day of

January A. D. 1920
 John Harrow Judge of Probate.
 Edward E. Howard County Clerk.
 A. Beardslee County Treasurer.

COUNTY TREASURER'S CERTIFICATE RELATING TO TAXES.

Office of County Treasurer ST. JOSEPH COUNTY I hereby certify that there are no tax liens or titles held by the State on the lands described below, and that there are no tax liens or titles held by individuals on said lands, for the five years preceding the 20th day of January A. D. 1920 and that the taxes for said period of five years are paid as shown by the records of this office.

DESCRIPTION OF LAND PLATTED.
 Beginning at a point 10 feet south and 33 feet west of the west quarter corner of section 6 T. 8 S. R. 11 W. thence west 150 feet thence south 317 feet thence S. 89° 15' E. 150 feet thence north 317 feet to place of beginning.

A. Beardslee County Treasurer

KNOW ALL MEN BY THESE PRESENTS.

That we the EDDY PAPER COMPANY a Michigan corporation by Frank H. Milham President and C. E. Nelson Secretary as proprietor, have caused the land embraced in the annexed plat to be surveyed, laid out and platted to be known as EDDY PAPER COMPANY Addition to the village of WHITE PIGEON St. Joseph County Michigan.

Signed and Sealed in the presence of
 Frank H. Milham President
 C. E. Nelson Secretary
 J. T. Fisher

STATE OF MICHIGAN ss.

County of St. Joseph
 On this 10th day of December A. D. 1919 before me L. W. Dick inss on a Notary Public in and for said County appeared Frank H. Milham and C. E. Nelson to me personally known, who being each by me duly sworn did say that they are the President and Secretary respectively of the EDDY PAPER COMPANY a Michigan corporation, and that the seal affixed to said instrument is the corporate seal of said corporation and that said instrument was signed and sealed in behalf of said corporation by authority of its Board of Directors and that the said Frank H. Milham and C. E. Nelson acknowledged said instrument to be the free act and deed of said corporation.

My Commission expires March 28, 1922.
 L. W. Dickinson Notary Public St. Joseph Co.

REGISTER'S OFFICE,
 COUNTY OF ST. JOSEPH,
 STATE OF MICHIGAN.
 Received for Record, this 29th
 day of January A. D. 1920
 at 10 o'clock A. M., and Recorded
 in Vol. 1 of Plats of Deeds
 on Page 89 as a proper
 certificate was furnished in compliance
 with Section 3557, Compiled Laws of 1897
 Arthur E. Howard
 Register of Deeds.

See Plat Book #2 Page 87
 For Resolution to Re-name Streets
 and Avenues