

ASSESSOR'S PLAT NO 1

A REPLAT OF PART OF SAVERY'S EXTENSION OF THE VILLAGE OF WHITE PIGEON, AND PART OF THE W 1/2 OF SW 1/4 SECTION 6, T8S, R11W, IN THE VILLAGE OF WHITE PIGEON ST. JOSEPH COUNTY, MICHIGAN.

10/13/37
James J. Junion

SCALE 1 INCH = 100 FEET
100'

DEDICATION

KNOW ALL MEN BY THESE PRESENTS THAT I, CHARLES E. PRESTON, Assessor of the Village of White Pigeon, St. Joseph County, State of Michigan, by virtue of authority in me vested by Section 51 of Act 172 of the Public Acts of 1929, having been duly authorized by the Village Council, have caused the land described in the annexed plat to be surveyed, laid out, and platted, to be known as Assessor's Plat No. 1, a replat of part of Savery's Extension of the Village of White Pigeon, and part of the W 1/2 of SW 1/4 Section 6, T8S, R11W, in the Village of White Pigeon, St. Joseph County, Michigan, and that title to the highways, streets, alleys, and public places as shown on said plat has been acquired by the public by reason of purchase, dedication, condemnation, or adverse possession for public use.

Witnesses { Belle Preston Charles E. Preston
Robert D. Johnson Assessor of the Village of White Pigeon

CERTIFICATE AS TO STATE TRUNK LINE OR FEDERAL AIDED ROADS

We hereby certify that said plat appears to include land located on a state trunk line or federal aided road.

James J. Junion
County Plat Board

Examined and approved _____ 1937.

State Highway Commissioner

CERTIFICATE AS TO COUNTY ROAD

We hereby certify that said plat appears to include land located on a county road.

James J. Junion
County Road Commission

Examined and approved _____ 1937.

County Road Commission

ACKNOWLEDGMENT

STATE OF MICHIGAN } ss
County of St. Joseph }
On this Sixteenth day of August A.D. 1937, before me, a Notary Public in and for said County, personally came the above named assessor of White Pigeon, known to me to be the person who executed the above dedication and acknowledged the same to be his free act and deed as such Assessor.

My Commission expires December 6th 1940 J. Holward Craft
Notary Public in and for said County.

DESCRIPTION OF LAND PLATTED

The land embraced in the annexed plat of Assessor's Plat No. 1, a replat of part of Savery's Extension of the Village of White Pigeon and part of the W 1/2 of SW 1/4 Section 6, T8S, R11W, in the Village of White Pigeon, St. Joseph County, Michigan, is described as follows: Beginning at a point 1750.2 feet South and 331 feet N 85° 45' E of the West 1/4 corner of Section 6, T8S, R11W, the boundary runs thence N 85° 45' E 992.7 feet, thence N 4° 18' W 53.84 feet, thence S 89° 57' E 417.0 feet, thence N 4° 18' W 1043.4 feet, thence S 85° 45' W 1062.6 feet, thence S 4° 18' E 917.5 feet, thence S 85° 45' W 334.9 feet, thence South 148.3 feet to point of beginning.

SURVEYOR'S CERTIFICATE

I hereby certify that the plat hereon delineated is a correct one and that permanent metal monuments of not less than one inch in diameter and fifteen inches in length set in a concrete base at least 4 inches in diameter and forty-eight inches in depth have been placed at all points marked thus "o" as thereon shown at all angles in the boundaries of the land platted, at all the intersections of streets, intersections of alleys, or of streets and alleys, and at the intersections of streets and alleys with the boundaries of the plat as shown on said plat. All dimensions are given in feet and decimals thereof.

C. T. Chester
Registered Civil Engineer.

CERTIFICATE OF MUNICIPAL APPROVAL

This plat was approved by the Common Council of the Village of White Pigeon at a meeting held Aug 16, 1937.

Harrison M. Mason
Clerk

CERTIFICATE OF APPROVAL BY COUNTY BOARD

This plat was approved on the 25th day of August, 1937.

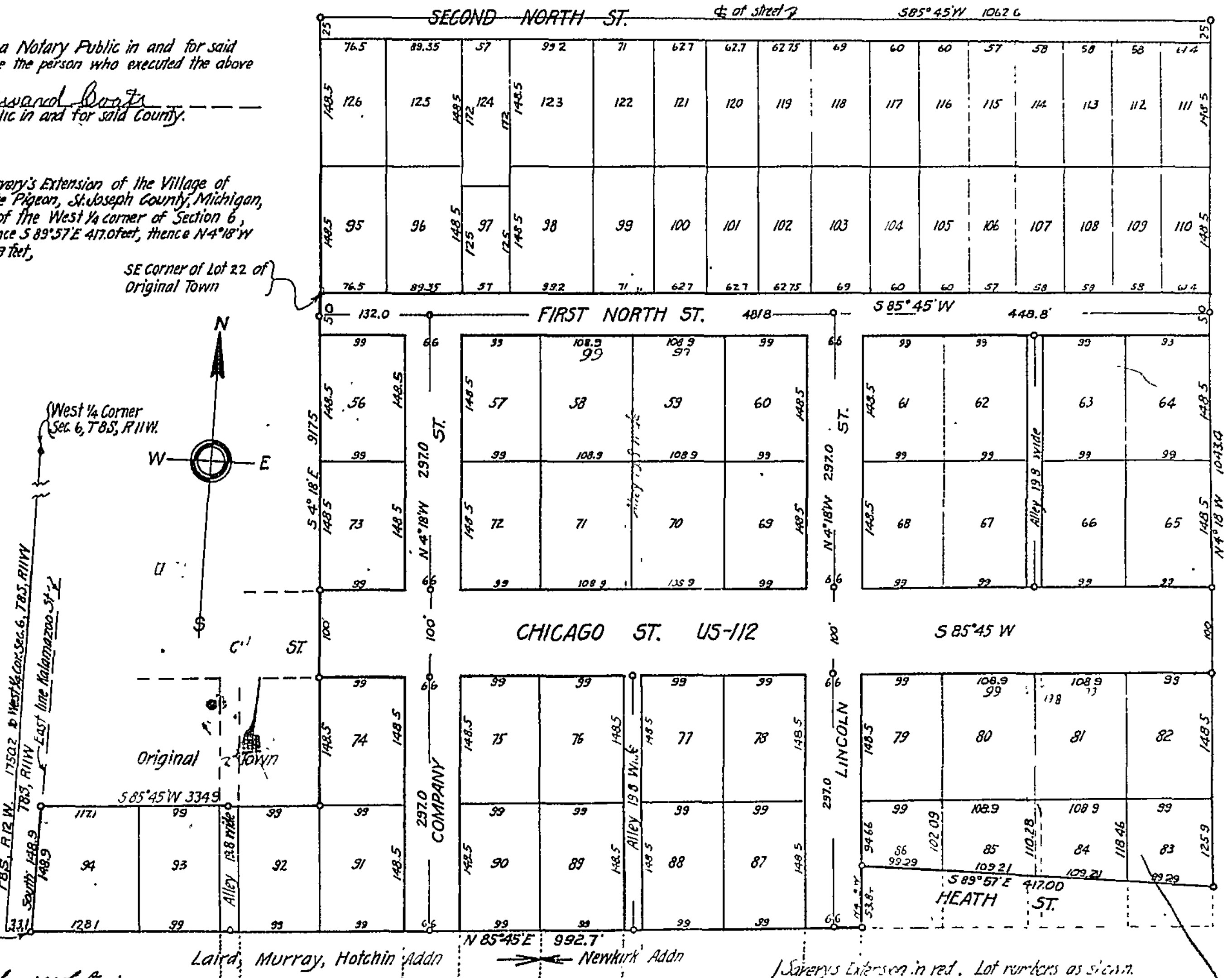
Edward St. Lawrence
Judge of Probate
James J. Junion
County Clerk
John M. Clifton
County Treasurer

Prepared for Record on the 16th day of October A. D. 1937
Recorded in Vol. 2 of Books at St. Joseph, Michigan.
By Genevieve H. Meade
Register of Deeds.

WIDTH AND LOCATION OF STATE TRUNK LINE AND FEDERAL AID ROADS G. C. W.
Murray R. Van Wageningen
State Highway Commissioner

Point of Beginning 1750.2' South and 331' N 85° 45' E of West 1/4 cor. Sec. 6, T8S, R11W.

See Plat Book #2 Page 82 for resolutions to change and re-name streets and avenues



Laird, Murray, Hotchin Addn
Newkirk Addn