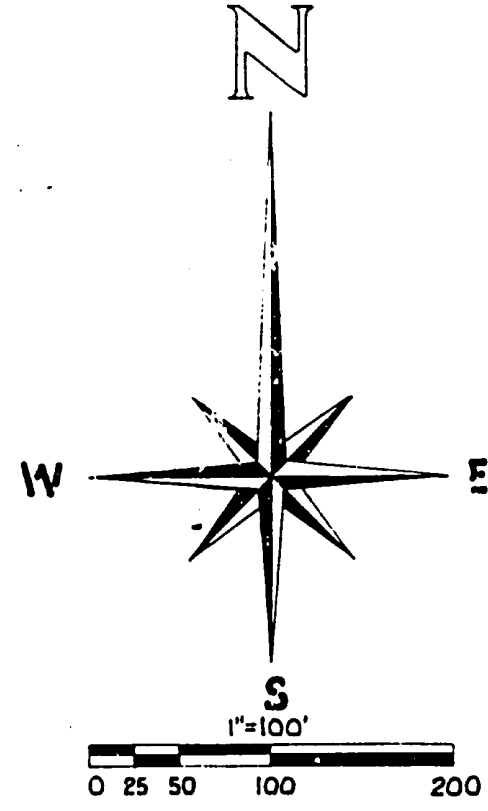


JERRY 4 CUPP 5 SUBDIVISION 6 UNPLATTED

NOTTAWASEEPE

A SUBDIVISION SITUATED IN THE SE 1/4 OF SECTION 27, T5S, R10W, VILLAGE OF MENDON, ST. JOSEPH COUNTY, MICHIGAN



LEGEND

BEARINGS ESTABLISHED BY THE EAST LINE OF SECTION 27 AS SHOWN IN JERRY CUPP SUBDIVISION WHICH IS RECORDED IN LIBER 5, PAGE 67 AND 67A, CENTREVILLE, MICH.

ALL DIMENSIONS ARE IN FEET.

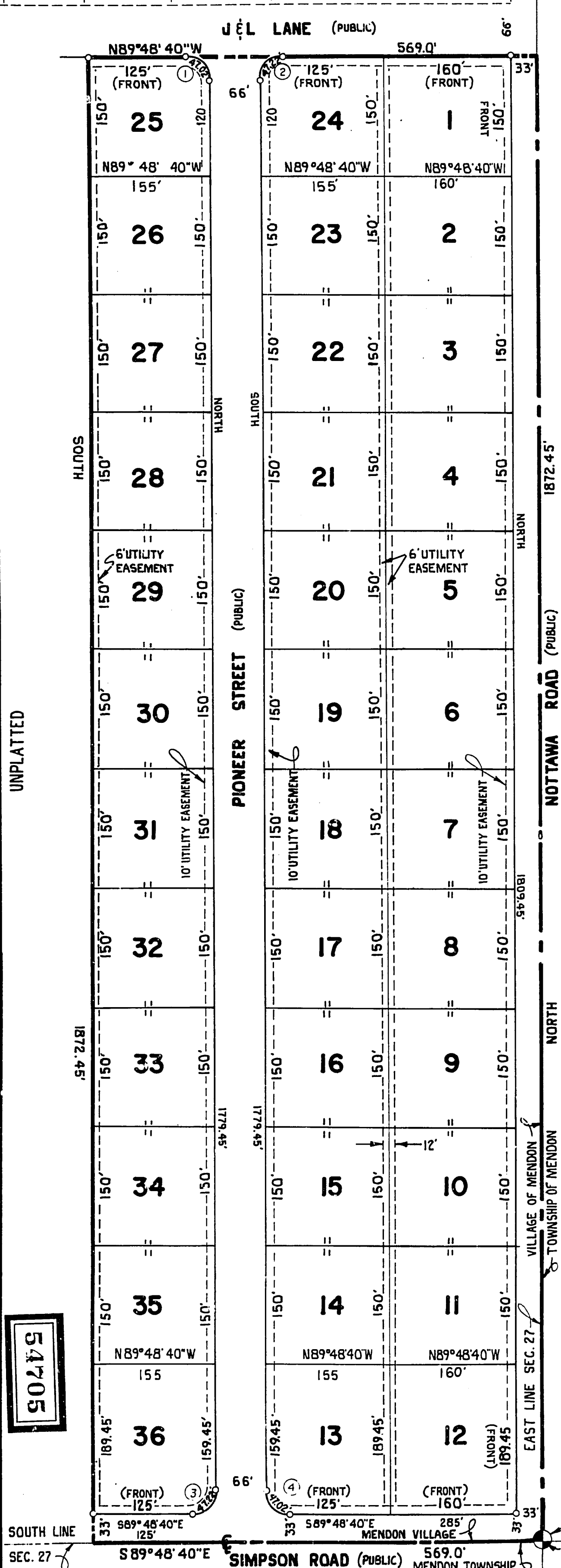
4" MONUMENTS ARE AT ALL POINTS MARKED THUS: "o"

ALL LOT CORNERS ARE MARKED BY A 1/2" X 18" FERROUS BAR.

ALL CURVE DIMENSIONS ARE ARC DIMENSIONS.

CURVE DATA

CURVE	RADIUS 'I'	ANGLE	TANGENT	ARC LENGTH	CHORD BEARING	CHORD LENGTH
1	30'	89° 48' 40"	29.90'	47.02'	N44° 54' 20"W	42.36'
2	30'	90° 11' 20"	30.10'	47.22'	S45° 05' 40"W	42.50'
3	30'	90° 11' 20"	30.10'	47.22'	N45° 05' 40"E	42.50'
4	30'	89° 48' 40"	29.90'	47.02'	S44° 54' 20"E	42.36'



UNPLATTED

NORTH

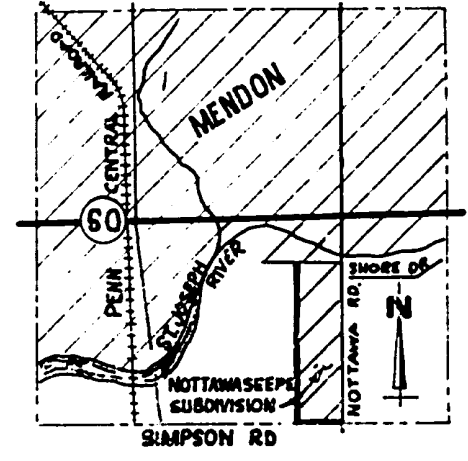
VILLAGE OF MENDON

TOWNSHIP OF MENDON

EAST LINE SEC. 27

UNPLATTED

VICINITY MAP (NO SCALE)



SE COR. SEC. 27 T5S, R10W MICH. (PIPE IN MON. BOX)

POINT OF BEGINNING