

RUSSELL'S ADDITION

TO THE VILLAGE OF CONSTANTINE,

A SUBDIVISION IN THE NORTHWEST QUARTER OF SECTION 25, TOWN 7 SOUTH, RANGE 12 WEST, CONSTANTINE TOWNSHIP, ST. JOSEPH COUNTY, MICHIGAN.

FILED IN AUDITOR GENERAL'S DEPT.

I HEREBY CERTIFY THAT THIS COPY IS A TRUE COPY OF THE MAP OR PLAT FORWARDED THE RECORDS FOR RECORDING.

1953
 Mayme Jewell Purdy
 DEPUTY AUDITOR GENERAL

1953
 Mayme Jewell Purdy
 DEPUTY AUDITOR GENERAL

Examined and Approved

1953
 Mayme Jewell Purdy
 Deputy Auditor General

COPY
 Register's Office
 St. Joseph County, MI.
 Plat of Russell's Addition
 Village of Constantine
 was Recorded this 12th day of
 January, A.D., 1953 at 11:55 O'clock
 A.M. in Liber 3 of Plate
 of Page 17
 E. Russell
 ORIGINAL ON FILE

DEDICATION:

Know all men by these presents, that we, Budd H. Russell and Postina E. Russell, husband and wife, and Elwood W. Russell and Frances E. Russell, husband and wife, as proprietors, have caused the land embraced in the annexed plat to be surveyed, laid out and platted, to be known as Russell's Addition to the Village of Constantine, a subdivision in the northwest quarter of Section 25, Town 7 South, Range 12 West, Constantine Township, St. Joseph County, Michigan, and that the streets as shown on said plat are hereby dedicated to the use of the public.

WITNESSES:
 William Schumbe
 William M. Lublow
 Verna M. Lublow

Budd H. Russell
 Postina E. Russell
 Elwood W. Russell
 Frances E. Russell

STATE OF MICHIGAN
 COUNTY OF ST. JOSEPH SS

On this 22 day of December, 1952, before me, a Notary Public in and for said county, personally appeared Budd H. Russell and Postina E. Russell, husband and wife, and Elwood W. Russell and Frances E. Russell, husband and wife, as proprietors, known to me to be the persons who executed the above dedication and acknowledged the same to be their free act and deed.

Verna M. Lublow
 Notary Public, St. Joseph County, Michigan.
 My commission expires 2-13-54
 February 13, 1954

CERTIFICATE OF APPROVAL BY COUNTY PLAT BOARD:

This plat was approved on the 30th day of December, 1952

Eleanor C. Russell, Register of Deeds
 John W. Marvin, County Clerk
 Eva M. Brumbaugh, County Treasurer
 Earl Luce, Drain Commissioner

CERTIFICATE OF MUNICIPAL APPROVAL:

This plat was approved by the Village Council of the Village of Constantine at a meeting held December 27, 1952.

Harold E. Smith, Clerk

TAX CERTIFICATE:

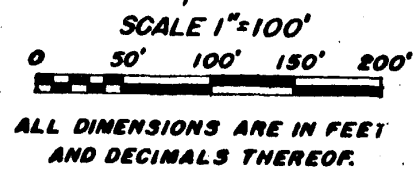
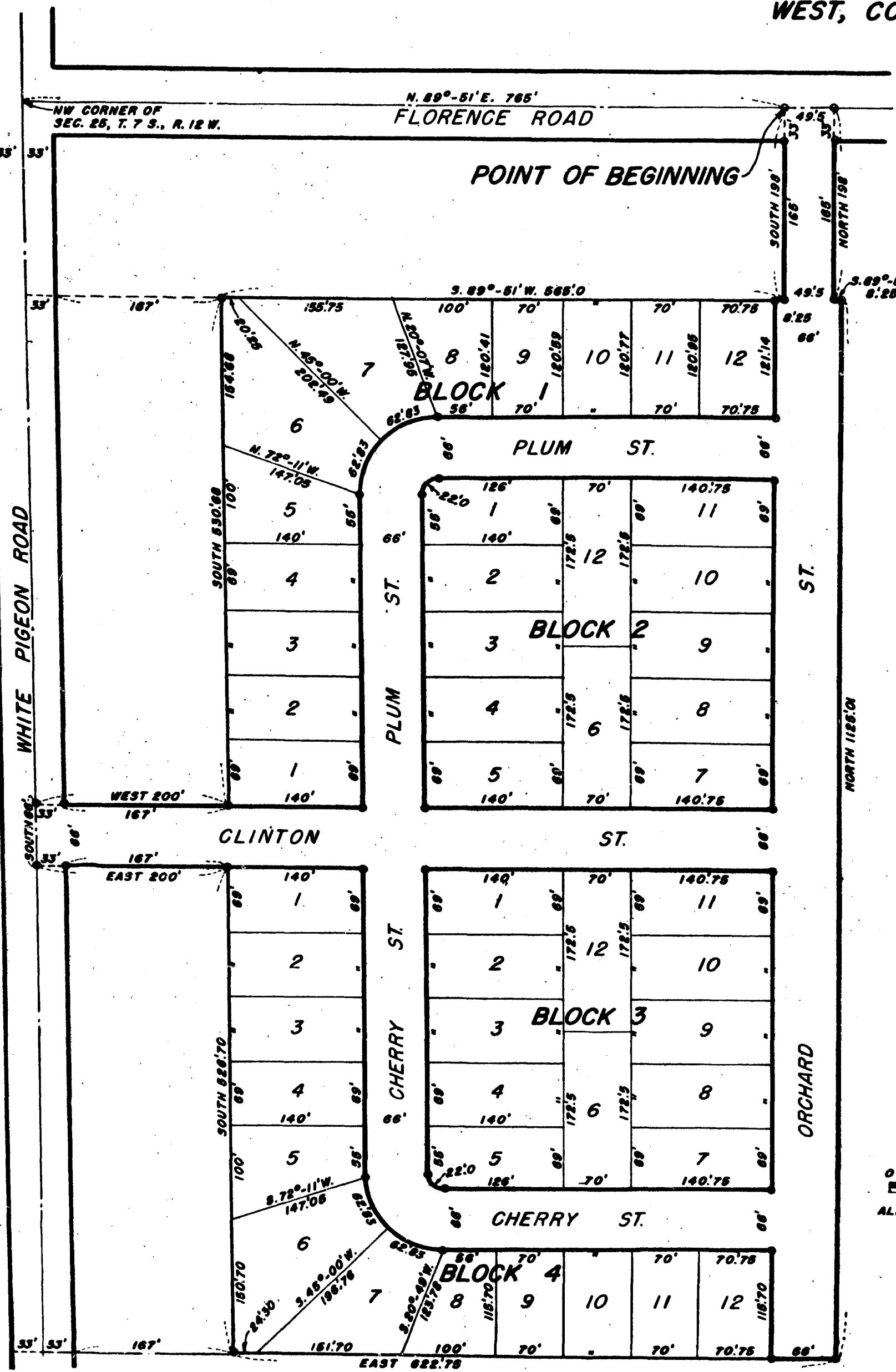
OFFICE OF COUNTY TREASURER, ST. JOSEPH COUNTY:
 I hereby certify that there are no tax liens or titles held by the State on the land described hereon, and that there are no tax liens or titles held by individuals on said lands for the five years preceding the day of Dec. 31, 1952, and that the taxes for said period of five years are fully paid as shown by the records of this office. This certificate does not apply to taxes, if any, now in process of collection by township, city, or village collecting officers.

Eva M. Brumbaugh, County Treasurer

SURVEYOR'S CERTIFICATE:

I hereby certify that the plat hereon delineated is a correct one and that permanent metal monuments consisting of bars not less than one-half inch in diameter and 43 inches in length, encased in a concrete cylinder at least four inches in diameter and 48 inches in depth, have been placed at all points marked thus: O as thereon shown at all angles in the boundaries of the land platted, at all intersections of streets and at the intersections of streets with the boundaries of the plat as shown on said plat.

Wenley D. Smith, Registered Land Surveyor



FLM
 1-9-53

33685-1