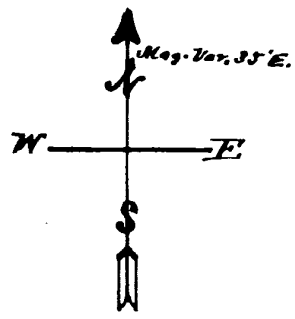


4980

4640

Line between Sections Eleven and Fourteen T. 6 S. R. 9 W.

East side of
Highway



FARRAND'S SOUTH ADDITION To the Village of COLON

Scale one inch to one chain or four rods

Description. A part of the North-west quarter of Section 14, T. 6 S. R. 9 W., bounded as follows, Commencing at a point on the section line between sections 11 and 14, 10¹/₂ Chs. east of the Stone² on the corner of sections 10, 11, 14 and 15, thence east 7 Chains, thence South 20° West 20¹/₂ Chs., thence ^{West} Chs., thence North 20° East 3¹/₂ Chs., thence West 4 Chs., thence North 20° East 16¹/₂ Chs., to place of commencement, containing 12¹/₂ Acres.

Monuments, permanent monuments have been located in the ground at all angles in the boundaries of the land plotted at points designated on the plat by the letters J, C, G, H, I, and K, also at all points where streets and alleys intersect each other also at points where streets and alleys intersect the boundary line at points designated on the plat by the letters B, D, E, F, L, M, N, O, P and Q, the exact position of the monuments is indicated on the plat by a cross (x) at each point. The monument at H is a 60¹/₂ split pine into root of Yellow Oak Tree, said tree bears N 60° E, 0.01¹/₂ from corner. The corner at K is a 1/2 in gas pipe 60 in. long. The monuments at all other points designated as Stones, each stone marked at point of intersection with a cross (+) on sand stone.

BOWMAN ST. is 4 rods wide. **Second, Third and Fourth Streets** are each 3 rods wide all lots are as marked on the plat in rolls. Alleys are 1 rod wide.

I, Samuel S. Reed, the surveyor who made the survey of Farrand's South Addition to the Village of Colon, do hereby certify that this plat of said addition and the above notes and descriptions are true and correct, and that the monuments described have been located in the ground at points designated.

Samuel S. Reed, surveyor

Dedication. We the undersigned, Edwin R. Hill, executor of the estate of Anna W. Bowman, deceased, and Grant E. Farrand, attorney in fact for the estate of Phineas Farrand, deceased, who have caused the land described above, to be plotted as shown by the annexed plat, do hereby dedicate the streets and alleys to the public for street purposes.

Signed Edwin R. Hill, Executor of Estate of Anna W. Bowman Deceased.
Grant E. Farrand, Atty. in fact for Estate of Phineas Farrand Deceased.

Witnesses Frank E. Hill,
W. Eck Doran.

State of Michigan } ss.
County of St. Joseph } On this Twentieth day of May in the year one thousand nine hundred and one, before me, the subscriber, a notary public, in and for said County, personally appeared Edwin R. Hill, executor of the estate of Anna W. Bowman, deceased, and Grant E. Farrand, attorney in fact for the estate of Phineas Farrand, deceased, to me known to be the same persons described in and who executed the within instrument and whose validity I acknowledged the same to be their free act and deed.

Frank E. Hill, Notary Public.

Examined and Approved
June 8, 1901.

John W. Wilkinson, Deputy Auditor General.

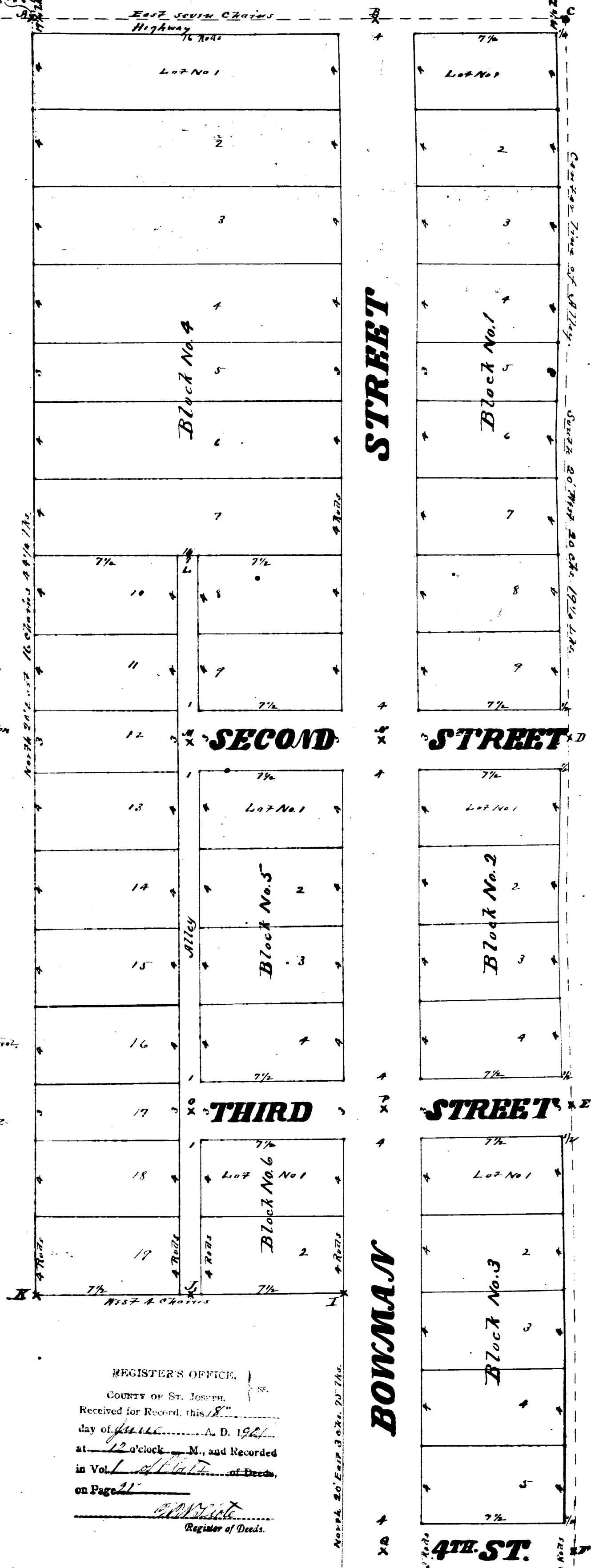
State of Michigan } ss.
County of St. Joseph } We W. W. S. Toze, Register of Deeds, and Samuel S. Reed, Surveyor, hereby certify that we have each carefully compared this copy with the original plat of Farrand's South Addition to the Village of Colon, and that it is an exact copy thereof and of the whole of such original map or plat.

I hereby certify that I have examined the records in my office relating to the description of lands in the within instrument and from such examination it appears that the State and County taxes have been fully paid for the five years preceding the date of said instrument.

W. W. S. Toze, Register of Deeds
Samuel S. Reed, Surveyor
Cantreville, Mich. JUN 18 1901
County Comm.

RECEIVED AND FILED
IN AUDITOR GENERAL'S OFFICE,
SEP 5 1901

John W. Wilkinson
Deputy Auditor General.



REGISTER'S OFFICE,
COUNTY OF ST. JOSEPH,
Received for Record, this 8th day of June, A. D. 1901,
at 12 o'clock P. M. and Recorded in Vol. 1 of Deeds on Page 21.

Register of Deeds.

State of Michigan } ss.
County of St. Joseph } We W. W. S. Toze, Register of Deeds, and Samuel S. Reed, Surveyor, hereby certify that we have each carefully compared this copy with the plat of Farrand's South Addition to the Village of Colon now of record in the office of said Register of Deeds, and that it is a true transcript therefrom and of the whole of such record.

W. W. S. Toze, Register of Deeds
Samuel S. Reed, Surveyor