

# ASSESSORS PLAT NO. 3

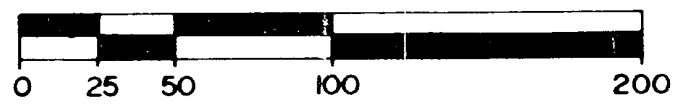
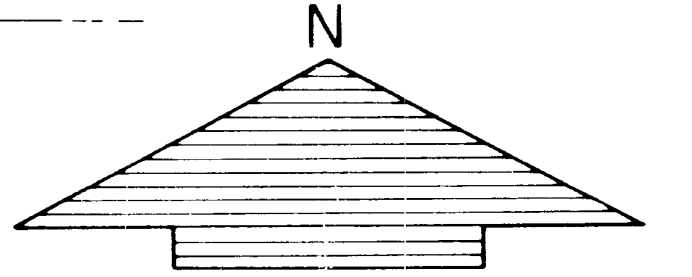
OF THE VILLAGE OF COLON, MICHIGAN

BEING LOT 30, PART OF LOT 29 OF ASSESSORS PLAT NO. 1, AND PART OF THE NORTH 1/2 OF SEC. 14, T6S, R9W, VILLAGE OF COLON, ST. JOSEPH CO., MICHIGAN

NORTH 1/4 CORNER  
SEC. 14, T 6 S, R 9 W

S 88°50' E 71.7'

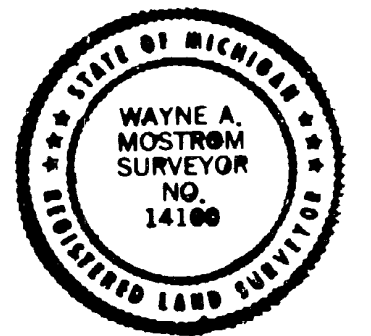
SECTION 11  
SECTION 14  
UNPLATTED



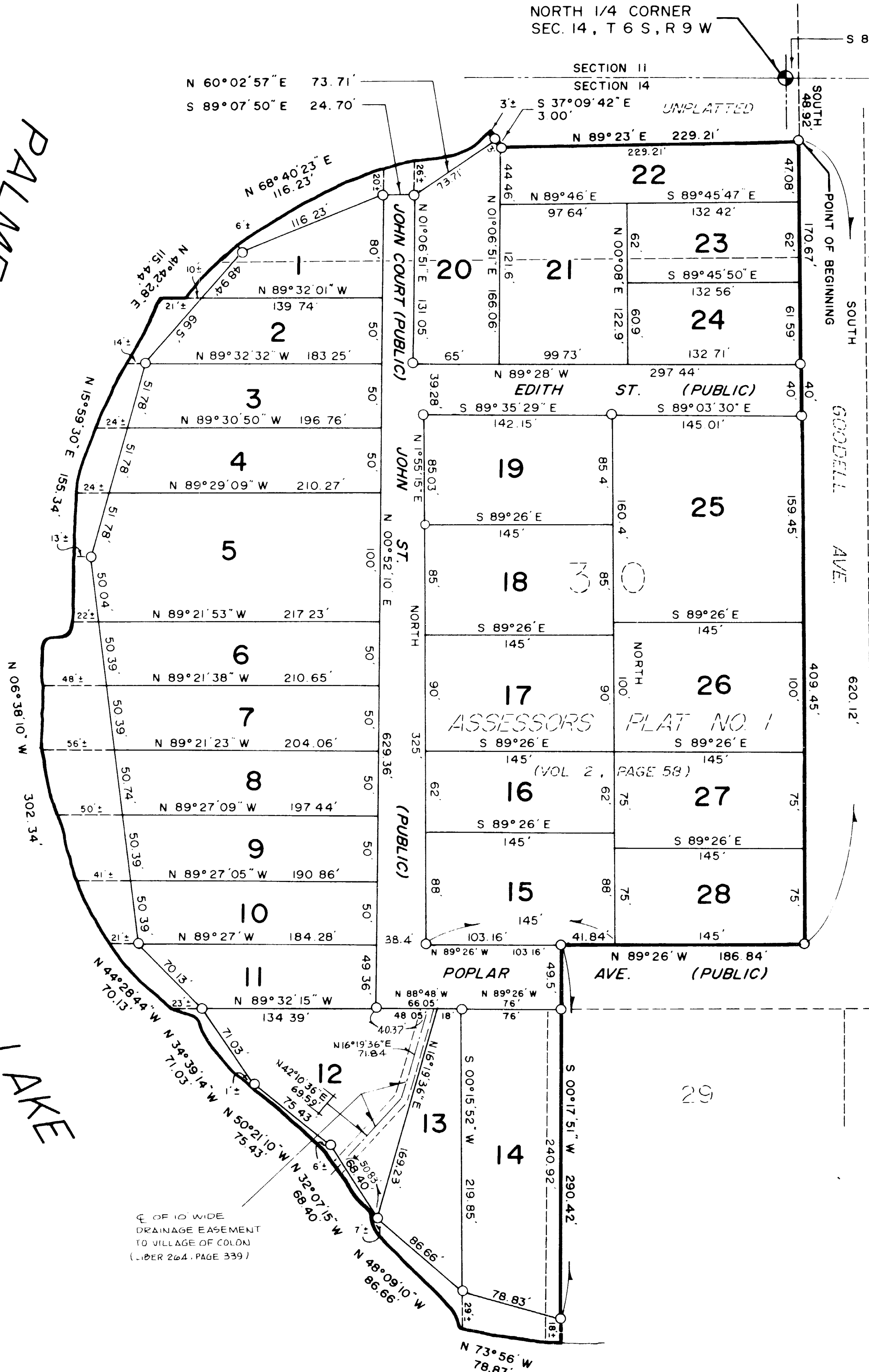
SCALE: ONE INCH = SIXTY FEET

### LEGEND

1. ALL DIMENSIONS ARE IN FEET.
2. ALL CURVE DIMENSIONS ARE ARCS.
3. CONCRETE MONUMENTS HAVE BEEN PLACED AT ALL POINTS MARKED THUS, "O".
4. LOT CORNERS HAVE BEEN MARKED WITH 1/2 INCH IRON BARS 18 INCHES IN LENGTH.
5. BEARINGS WERE ESTABLISHED FROM THE RECORDED PLAT OF "ASSESSORS PLAT NO. 1 OF THE VILLAGE OF COLON", LIBER 2 OF PLATS, PAGE 58.

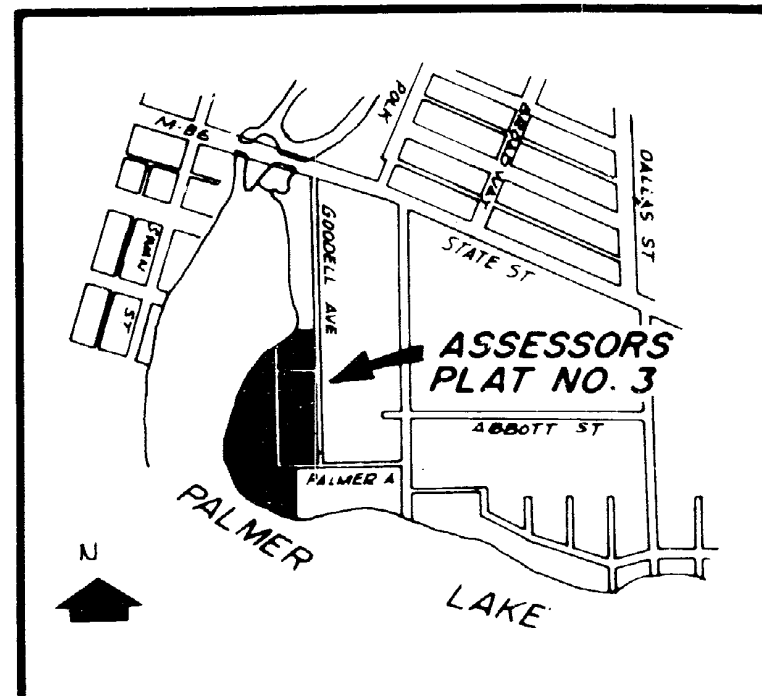


*Wayne A. Mstrom*



31

VICINITY MAP  
(NOT TO SCALE)



58113