

Examined and Approved

*G. J. Hartman*  
Deputy Auditor General

FILED IN AUDITOR GENERAL'S DEPT.

*G. J. Hartman*  
DEPUTY AUDITOR GENERAL

# "ASSESSORS PLAT NO. 2.

IN THE VILLAGE OF COLON.  
A part of the NW 1/4 of the NW 1/4 of Sec. 14 T6S. R9W.  
ST. JOSEPH COUNTY MICHIGAN.

### DEDICATION.

KNOW ALL MEN BY THESE PRESENTS That I Wallace H. Wagner, Assessor for the Village of Colon, St. Joseph County Michigan, by virtue of authority in me vested by Section 51, Act 172 of 1929, having been duly authorized by the Village Council, have caused the land described in the annexed plat to be surveyed, laid out and platted to be known as "Assessors Plat No. 2 in the Village of Colon, St. Joseph County Michigan, and that the Streets and Alleys as shown on said plat are now being used for such purposes.

*John Harschner*  
*Mary Wagner*  
Witnesses.

*Wallace H. Wagner*  
Assessor for the Village of Colon

### ACKNOWLEDGMENT.

STATE OF MICHIGAN }  
County of St. Joseph. } ss

On this 17th day of November A.D. 1934, before me, a Notary Public, in and for said County, personally came the above named Assessor of the Village of Colon, known to me to be the person who executed the above dedication, and acknowledged the same to be his free act and deed as such Assessor.

My Commission Expires 31st of 1937  
*Edwin J. Hill*  
Notary Public in and for St. Joseph County.

### DESCRIPTION OF LAND PLATTED

The land embraced in the annexed plat of Assessors Plat No. 2 in the Village of Colon, St. Joseph County Michigan, is described as follows: Beginning at a point on the South line of South Street, said point being 127' South and 1133.88' N 89° 40' E on section line from the Section corner common to Sections 10, 11, 14, and 15, T6S, R9W, the boundary runs thence N 89° 40' E 165 ft, thence South 1318.65 ft, thence S 89° 40' W 165 ft, thence North 1318.65 ft, to the point of beginning. The above description embraces what was known as O. H. Todd's Plat, also being a part of Bowman's South Addition as shown in red.

### SURVEYORS CERTIFICATE.

I hereby certify that the plat hereon delineated is a correct one and that permanent metal monuments of not less than one inch in diameter and fifteen inches in length set in a concrete base at least four inches in diameter and forty-eight inches in depth, have been placed at all points marked thus on said plat, at all angles in the boundaries of the land platted, at all the intersections of the streets, intersections of alleys, or of streets and alleys, and at the intersections of streets and alleys with the boundaries of the plat as shown on said plat.

*J. M. Chester*  
Registered Civil Engineer.

### CERTIFICATE OF MUNICIPAL APPROVAL

This plat was approved by the Common Council of the Village of Colon at a meeting held December 11, 1934.

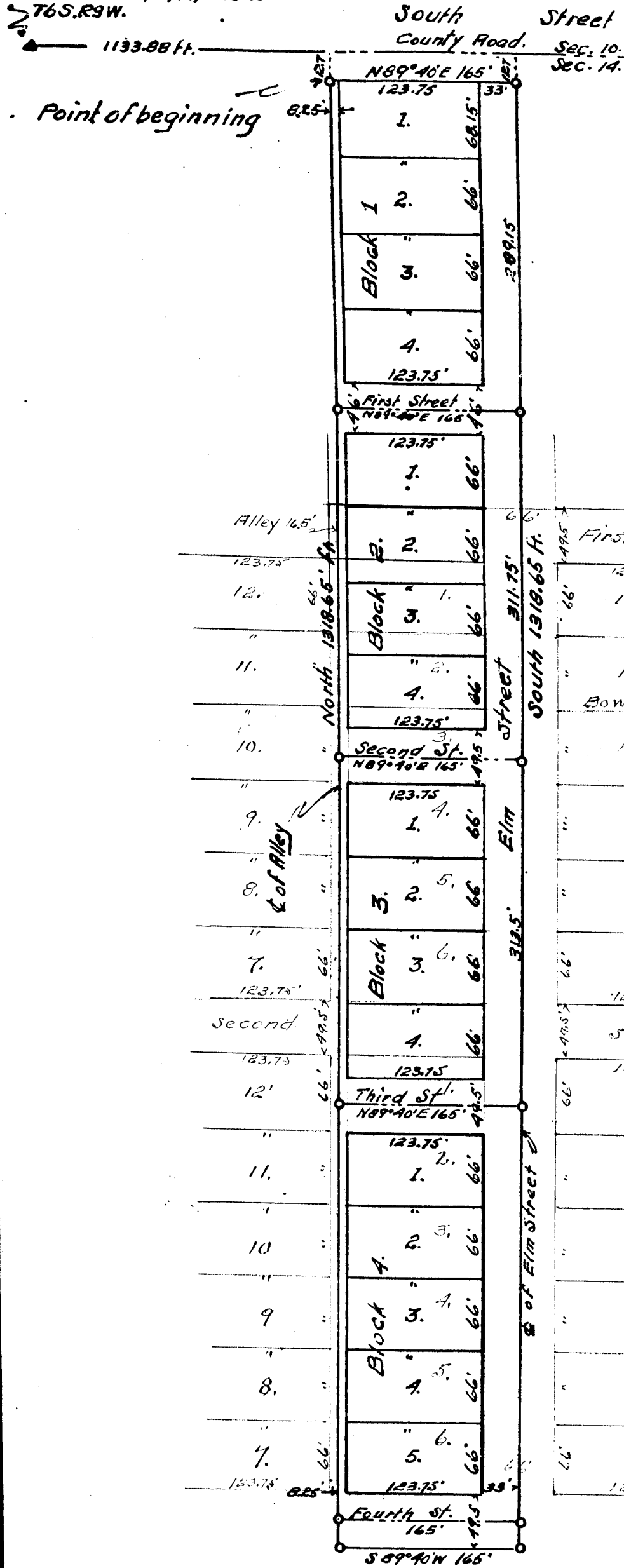
*John Harschner*  
Clerk.

### CERTIFICATE OF APPROVAL BY COUNTY BOARD.

This plat was approved on the 8th day of August 1935.

*Edward Harmon*  
Judge of Probate.  
*John W. Fletcher*  
County Clerk  
*John W. Fletcher*  
County Treasurer.

section corner  
Sections 10, 11, 14, and 15  
T6S. R9W.



Scale 1"=100'



I HEREBY CERTIFY THAT THIS COPY IS A TRUE COPY OF THE ORIGINAL PLAT FORWARDED TO THE OFFICE OF DEEDS FOR RECORD.

*G. J. Hartman*  
DEPUTY AUDITOR GENERAL

Register's Office  
St. Joseph County, } ss.  
Notary Assessor, Plat No. 2  
Village of Colon  
was recorded this 1st day of  
November A.D. 1934, at 5 o'clock  
P. M. in Book 2 of Plats  
Page 25  
*James H. Mason*  
Register of Deeds.  
ORIGINAL ON FILE.

Note.  
All dimension are given in feet and decimals thereof.

CERTIFICATE AS TO COUNTY ROADS.  
We hereby certify that said plat appears to include land located on a county road.

*Edward Harmon*  
*John W. Fletcher*  
County Plat Board

Examined and approved Aug 8 1935.  
Board of County Road Commissioners  
of St. Joseph County

*J. M. Strickell*  
*Fred H. Carver*  
*D. H. Dermott*