

ASSESSORS REPLAT OF PART OF THE VILLAGE OF BURR OAK

SEC. 23, T7S R9W
ST. JOSEPH COUNTY, MICHIGAN.

DEDICATION

KNOW ALL MEN BY THESE PRESENTS, THAT I, JOHN W. MORHART, ASSESSOR OF THE VILLAGE OF BURR OAK, ST. JOSEPH COUNTY, STATE OF MICHIGAN, BY VIRTUE OF AUTHORITY IN ME VESTED BY SECTION 51, ACT 172, OF 1929, HAVING BEEN DULY AUTHORIZED BY THE VILLAGE COUNCIL HAVE CAUSED THE LAND DESCRIBED IN THE ANNEXED PLAT TO BE SURVEYED, LAID OUT, AND PLATTED, TO BE KNOWN AS "ASSESSORS REPLAT OF PART OF THE VILLAGE OF BURR OAK," ST. JOSEPH COUNTY, MICHIGAN, AND THAT THE STREETS AND ALLEYS AS SHOWN ON SAID PLAT ARE NOW BEING USED FOR SUCH PURPOSES, AND THAT THE PLAT CONFORMS WITH THE REQUIREMENTS OF SECTION 51, ACT 172, OF PUBLIC ACTS OF 1929, AS AMENDED.

John W. Morhart
JOHN W. MORHART,
ASSESSOR OF THE VILLAGE OF BURR OAK.

R. E. Sayers WITNESS
Jean L. Sayers WITNESS
R. E. SAYERS, WITNESS
JEAN L. SAYERS, WITNESS

STATE OF MICHIGAN SS
COUNTY OF ST. JOSEPH
ON THIS 6th DAY OF August A.D. 1962, BEFORE ME, A NOTARY PUBLIC IN AND FOR SAID COUNTY, PERSONALLY CAME THE ABOVE NAMED JOHN W. MORHART OF BURR OAK KNOWN TO ME TO BE THE PERSON WHO EXECUTED THE ABOVE DEDICATION, AND ACKNOWLEDGED THE SAME TO BE HIS FREE ACT AND DEED AS SUCH ASSESSOR.

Jean L. Sayers
JEAN L. SAYERS, NOTARY PUBLIC
ST. JOSEPH COUNTY, MICH.
MY COMMISSION EXPIRES
June 2, 1964

REGISTRAR'S OFFICE,
COUNTY OF ST. JOSEPH,
STATE OF MICHIGAN.
Date for Record, this 24th day of August A.D. 1962
at 2:05 o'clock P.M. and recorded in Vol. 4 Plats
Page 52
Robert E. Sayers
REGISTERED LAND SURVEYOR

CERTIFICATE OF APPROVAL BY COUNTY PLAT BOARD

THIS PLAT WAS APPROVED BY THE ST. JOSEPH COUNTY PLAT BOARD AT A MEETING HELD August 14th, 1962.

Donna E. Donmyer
DONNA E. DONMYER, REGISTER OF DEEDS
John W. Marvin
JOHN W. MARVIN, COUNTY CLERK

Richard K. Quinn
RICHARD K. QUINN, COUNTY TREASURER
Ruel N. Beebe
RUEL N. BEEBE, DRAIN COMMISSIONER

CERTIFICATE OF MUNICIPAL APPROVAL

THIS PLAT WAS APPROVED BY THE VILLAGE COUNCIL OF THE VILLAGE OF BURR OAK AT A MEETING HELD August 6, 1962, AND IS IN COMPLIANCE WITH SECTION 192 AND THAT THE WIDTH OF LOTS CONFORMS WITH REQUIREMENTS OF SECTION 30, ACT 172, OF 1929, AS AMENDED.

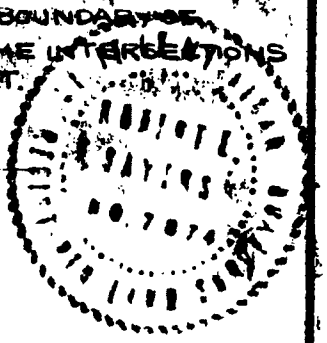
Carol Ankney
CAROL ANKNEY VILLAGE CLERK

DESCRIPTION (BEING A REPLAT OF LOTS 1 TO 6, INCLUSIVE, OF ASSESSORS PLAT NO. 2 IN THE VILLAGE OF BURR OAK AND PART OF THE NORTH 1/2 OF SECTION 23, T7S, R9W, MICHIGAN)
ASSESSORS REPLAT OF PART OF THE VILLAGE OF BURR OAK, ST. JOSEPH COUNTY, MICHIGAN, IS DESCRIBED AS FOLLOWS: COMMENCING AT THE CENTER OF SECTION 23, TOWN 7 SOUTH, RANGE 9 WEST, BURR OAK TOWNSHIP, ST. JOSEPH COUNTY, MICHIGAN, AND RUNNING THENCE N00°14'W ALONG THE EAST LINE OF FIFTH ST. 1320 FEET TO THE POINT OF BEGINNING; THE BOUNDARY RUNS THENCE N00°14'W 203.80 FEET, THENCE NORTH-WESTERLY ALONG A CURVE TO THE LEFT WITH A RADIUS OF 260.48 FEET A DISTANCE OF 285.65 FEET (SAID CURVE BEING SUBTENDED BY A CHORD THAT BEARS N 31°39'W 271.56 FEET), THENCE N62°47'W 82.43 FEET, THENCE N61°36'13"W 16 FEET, THENCE N63°13'30"W 146.80 FEET, THENCE S00°35'E 56.11 FEET, THENCE N 63°13'30"W 174.69 FEET, THENCE N00°35'W 292.50 FEET, THENCE S24°48'E 115.90 FEET, THENCE S07°30'W 64.70 FEET, THENCE S60°14'E 199.52 FEET, THENCE S76°18'30"E 156.29 FEET, THENCE S88°15'E 211.56 FEET, THENCE S19°29'30"E 263.87 FEET, THENCE S49°29'30"E 337.68 FEET, THENCE S64°51'W 102.92 FEET, THENCE S25°09'E 10 FEET, THENCE S64°51'W 120 FEET, THENCE N23°57'30"W 111.37 FEET, THENCE N79°50'30"W 130.60 FEET TO THE POINT OF BEGINNING. THIS PLAT CONTAINS 9 NUMBERED LOTS.

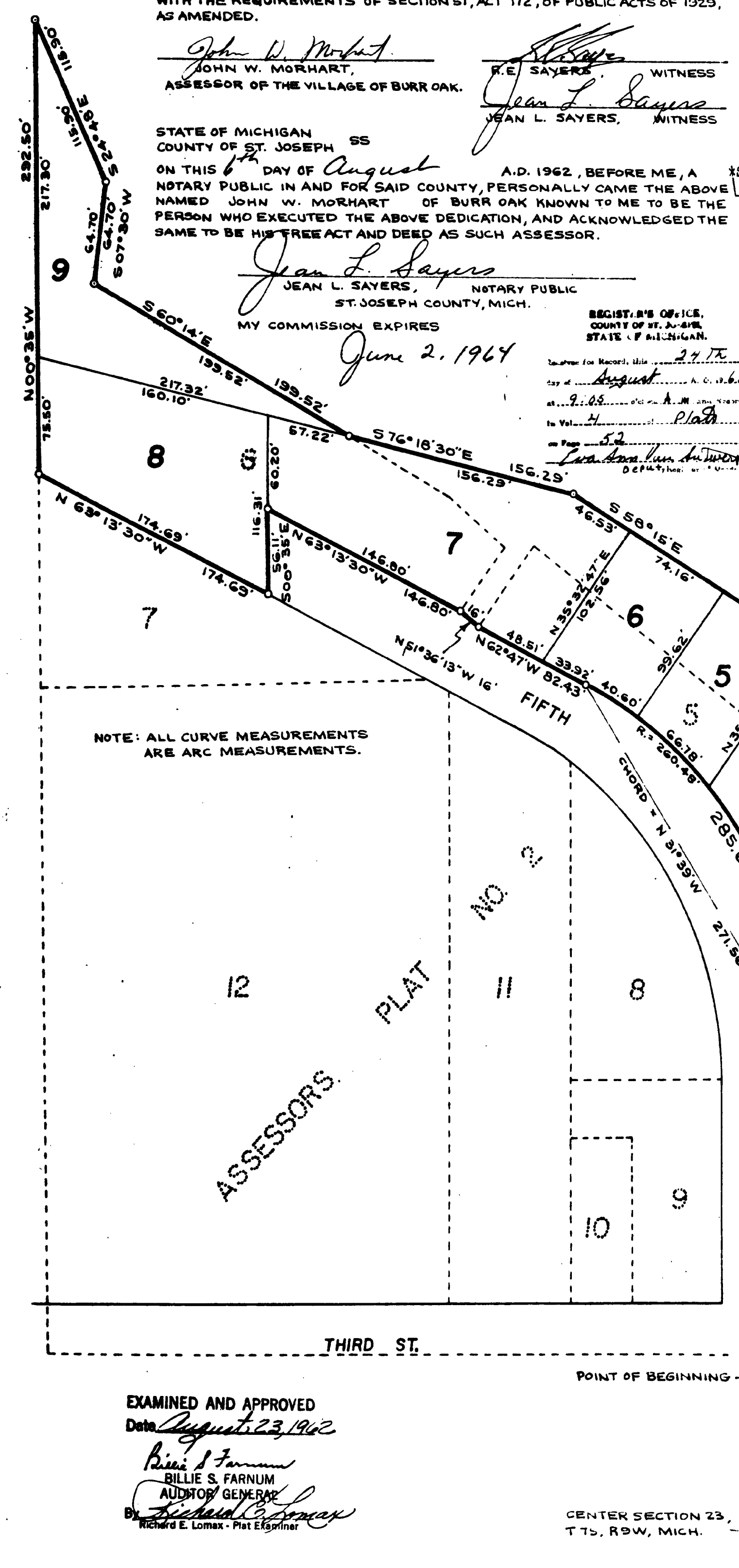
SURVEYOR'S CERTIFICATE

I HEREBY CERTIFY THAT THE PLAT HEREON DELINEATED IS A CORRECT ONE AND THAT PERMANENT METAL MONUMENTS CONSISTING OF BARS NOT LESS THAN ONE-HALF INCH IN DIAMETER AND 36 INCHES IN LENGTH, ENCASED IN A CONCRETE CYLINDER AT LEAST 4 INCHES IN DIAMETER AND 36 INCHES IN DEPTH, HAVE BEEN PLACED AT ALL POINTS MARKED THUS: (o) AS THEREON SHOWN AT ALL ANGLES IN THE BOUNDARY OF THE LAND PLATTED, AT ALL THE INTERSECTIONS OF STREETS, AND AT THE INTERSECTIONS OF STREETS WITH THE BOUNDARY OF THE PLAT AS SHOWN ON SAID PLAT.

Robert E. Sayers
ROBERT E. SAYERS, REGISTERED LAND SURVEYOR

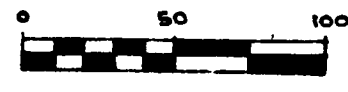


SEC. 23 *
T7S R9W

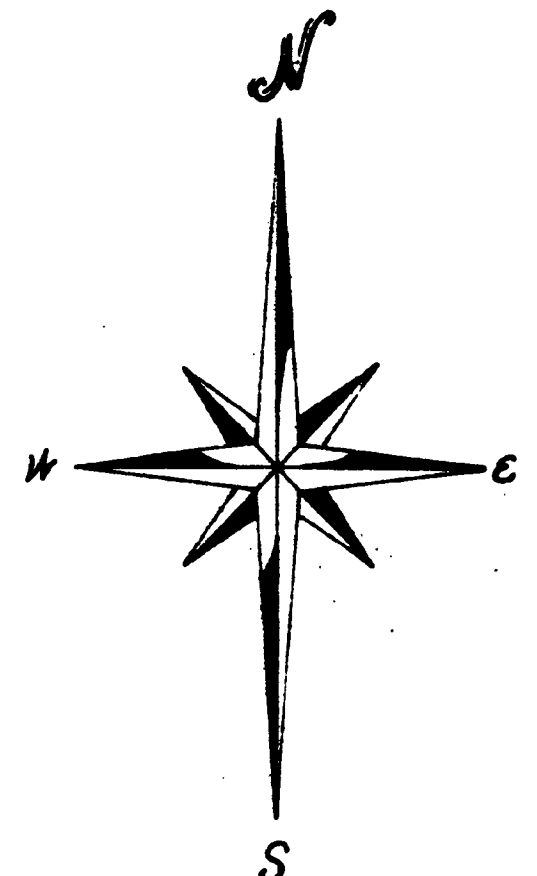


NOTE: ALL CURVE MEASUREMENTS ARE ARC MEASUREMENTS.

SCALE: 1"=60 FT.



ALL DIMENSIONS ARE IN FEET AND DECIMALS THEREOF.



EXAMINED AND APPROVED
Date August 23, 1962
Billie S. Farnum
BILLIE S. FARNUM
AUDITOR GENERAL
Richard E. Lomax
Richard E. Lomax - Plat Examiner

CENTER SECTION 23,
T7S, R9W, MICH.