

(original.)

ASSESSORS PLAT NO 4.

IN THE VILLAGE OF BURR-OAK.
A part of the East 1/2 of the SW 1/4 and West 1/2 of the SE 1/4 Sec. 23, T7S, R9W
ST. JOSEPH COUNTY MICHIGAN.

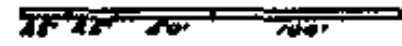
Examined and Approved

[Signature]
Dep. Auditor General

CERTIFICATE OF APPROVAL
BY COUNTY BOARD

This plat was approved on the
8 day of August 1935.

Scale - one inch = 100 Ft.



DEDICATION

KNOW ALL MEN BY THESE PRESENTS that I PAUL L. AHLGREN, Assessor for the Village of Burr-Oak St. Joseph County Michigan by virtue of authority in me vested by section 51, Act 172, of 1929 having been duly authorized by the Village Council caused the land described in the annexed Plat to be surveyed laid out and divided to be known as "Assessors Plat No 4" to the Village of Burr-Oak St. Joseph County Michigan and that the streets Alleys and lanes are now being used for such purposes.

Witnesses: *[Signatures]*

[Signature]
Assessor for the Village of Burr-Oak.

ACKNOWLEDGMENT.

STATE OF MICHIGAN } ss
County of St. Joseph

On this 16th day of July A.D. 1935 before me a Notary Public in and for said County personally came the above named Assessor for the Village of Burr-Oak known to me to be the person who executed the above dedication and acknowledged the same to be his free act and deed as such Assessor.

[Signature]
Notary Public in and for St. Joseph County.
21-36

DESCRIPTION OF LAND PLATTED

The land embraced in the annexed Plat of "Assessors Plat No 4" in the Village of Burr-Oak St. Joseph County Michigan is described as follows Beginning at a point 561.0 ft North of the quarter corner common to Sections 23 and 26 T7S, R9W, the boundary runs thence North 124.4 ft thence N 89° 12' E 589.6 ft thence N 25° 00' W 100.4 ft thence N 66° 25' E 192.5 ft thence N 33° 45' W 207.6 ft thence S 64° 34' W 97.4 ft thence N 24° 45' W 349.7 ft thence S 64° 34' W 100.6 ft thence N 2° 40' W 50.0 ft thence S 64° 34' W 192.0 ft thence due West 293.5 ft thence N 22° 25' W 202.1 ft thence S 64° 10' W 85.7 ft thence due South 208.1 ft thence due West 272.5 ft thence S 01° 10' E 430.6 ft thence due South 295.8 ft thence due East 264.0 ft to point of beginning All dimensions being given in feet and decimals thereof.

SURVEYORS CERTIFICATE

I hereby certify that the Plat hereon delineated is a correct one and that permanent metal monuments of not less than one inch in diameter and fifteen inches in length set in a concrete base at least four inches in diameter and forty eight (48) inches in depth have been placed at all points marked thus "o" as thereon shown at all angles in the boundary of the land platted at all the intersections of the streets or of streets and Alleys and of the intersections of streets and Alleys with the boundaries of the Plat as shown on said Plat.

[Signature]
Registered Civil Engineer

CERTIFICATE AS TO COUNTY ROAD

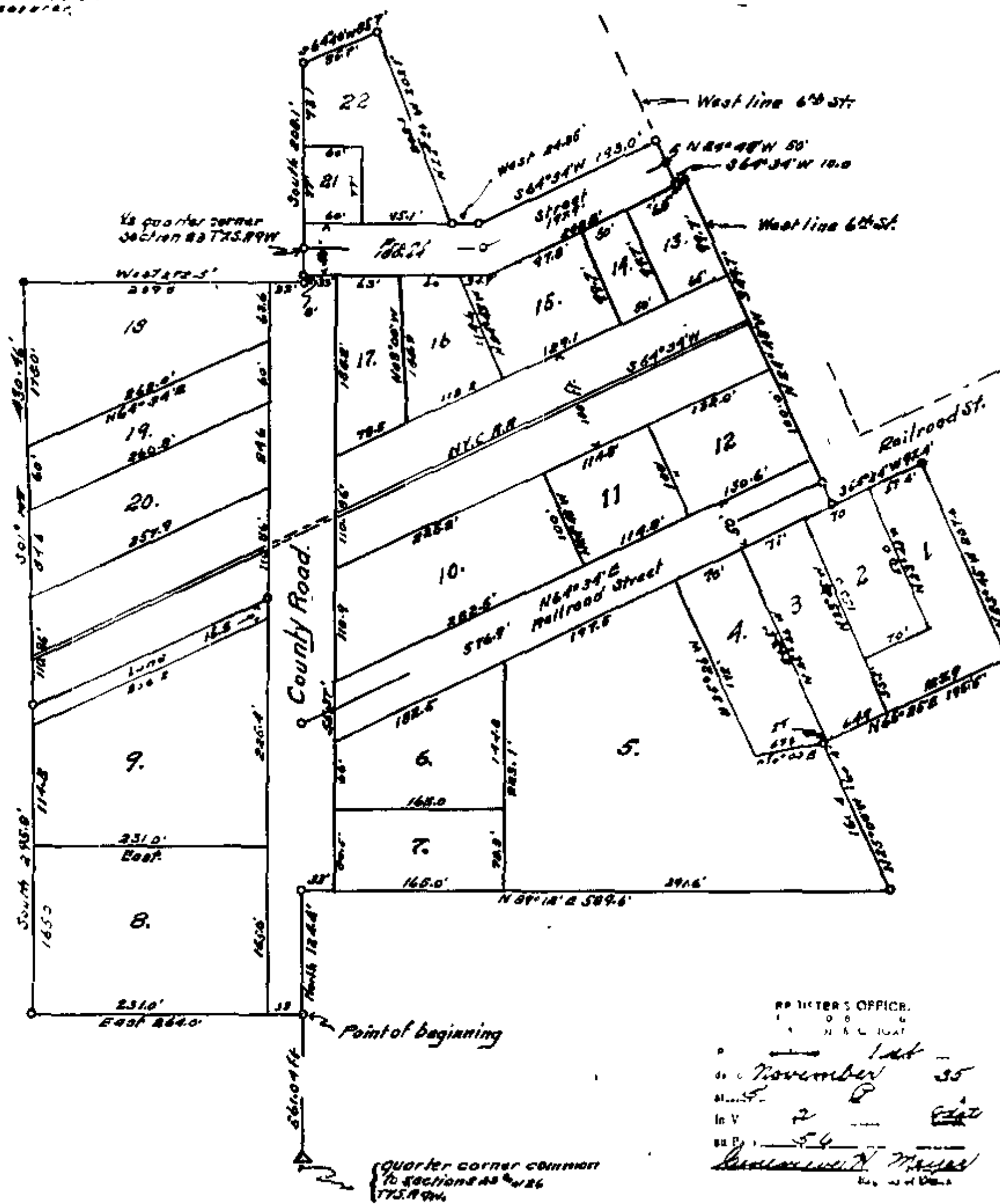
Examined and approved this 8 day of August 1935 by the board of County Road Commissioners

[Signatures]

CERTIFICATE OF MUNICIPAL APPROVAL.

This Plat was approved by the common Council of the Village of Burr-Oak at a meeting held July 30 1935

[Signature]



REGISTER'S OFFICE.
NOV 16 1935
1935
In V
54
[Signature]

Quarter corner common to sections 23 and 26 T7S, R9W