

"ASSESSORS PLAT NO 3.

Original.

IN THE VILLAGE OF BURR-OAK,
A part of the East 1/2 of the S.E. 1/4 of Section 23 T7S, R9W.
ST JOSEPH COUNTY MICHIGAN.

Scale - one inch = 100 ft.

Examined and Approved

[Signature]
11/24/35
Treasurer

DEDICATION

KNOW ALL MEN BY THESE PRESENTS, That I PAUL L AHLGREN, Assessor for the Village of Burr-Oak St Joseph County Michigan by virtue of authority in me vested by Sect on 51 of 1929 having been duly authorized by the Village Council have caused the land described in the annexed Plat to be surveyed laid out and platted to be known as "Assessors Plat No 3, in the Village of Burr-Oak St Joseph County Michigan and that the streets and alleys as shown on said Plat are now being used for such purposes.

Witnesses *[Signatures]*
Paul L Ahlgren
Assessor for the Village of Burr-Oak

ACKNOWLEDGMENT.

STATE OF MICHIGAN } ss
County of St Joseph }
On this 11th day of July AD 1935 before me a Notary Public in and for said County personally came the above named Assessor for the Village of Burr-Oak known to me to be the person who executed the above dedication and acknowledged the same to be his free act and deed as such Assessor

[Signature]
Notary Public for St Joseph County
My Comm. Expires - 2-21-36

DESCRIPTION OF LAND PLATTED

The land embraced in the annexed Plat of Assessors Plat No 3 in the Village of Burr-Oak St Joseph County Michigan, is described as follows Beginning at a point 269.5 ft South of the East quarter corner of Section 23 T7S, R9W, the boundary runs thence S 64° 54' W 248.8 ft, thence N 36° 19' W 40.4 ft, thence N 82° 49' W 46.4 ft, thence N 07° 04' W 71.6 ft, thence N 75° 49' W 65.7 ft, thence S 10° 26' W 74.2 ft, thence S 42° 13' W 60.7 ft, thence S 26° 13' E 40.5 ft, thence S 64° 13' W 132.8 ft, thence N 80° 09' W 40.2 ft, thence N 63° 51' W 83.0 ft, thence N 25° 31' W 63.0 ft, thence S 09° 01' E 96.8 ft, thence N 59° 15' E 83.0 ft, thence N 14° 09' E 69.4 ft, thence N 00° 45' E 57.5 ft, thence S 66° 05' W 67.6 ft, thence S 24° 33' E 256.0 ft, thence S 65° 27' W 259.7 ft, thence S 23° 35' E 415.3 ft, thence N 66° 23' E 79.4 ft, thence S 11° 35' E 45.7 ft, thence S 50° 43' E 400.5 ft, thence S 00° 15' W 170.3 ft, thence N 09° 45' E 430.2 ft, thence North 1400.7 ft, to the point of beginning.

SURVEYORS CERTIFICATE.

I hereby certify that the Plat hereon delineated is a correct one and that permanent metal monuments of not less than one inch in diameter and fifteen inches in length, set in a concrete base of at least four inches in diameter and forty eight inches in depth have been placed at points marked thus "o" as thereon shown at all angles in the boundary of the land platted at all the intersections of the streets or of streets and Alleys and at the intersections of streets and Alleys with the boundaries of the Plat as shown on said Plat
All dimensions are given in feet and decimals thereof

CERTIFICATE AS TO COUNTY ROADS.

Examined and approved this 8 day of August 1935, by the board of County Road Commissioners.

[Signatures]
Chairman
Clerk

CERTIFICATE OF MUNICIPAL APPROVAL

This Plat was approved by the common Council of the Village of Burr-Oak at a meeting held July 30 1935

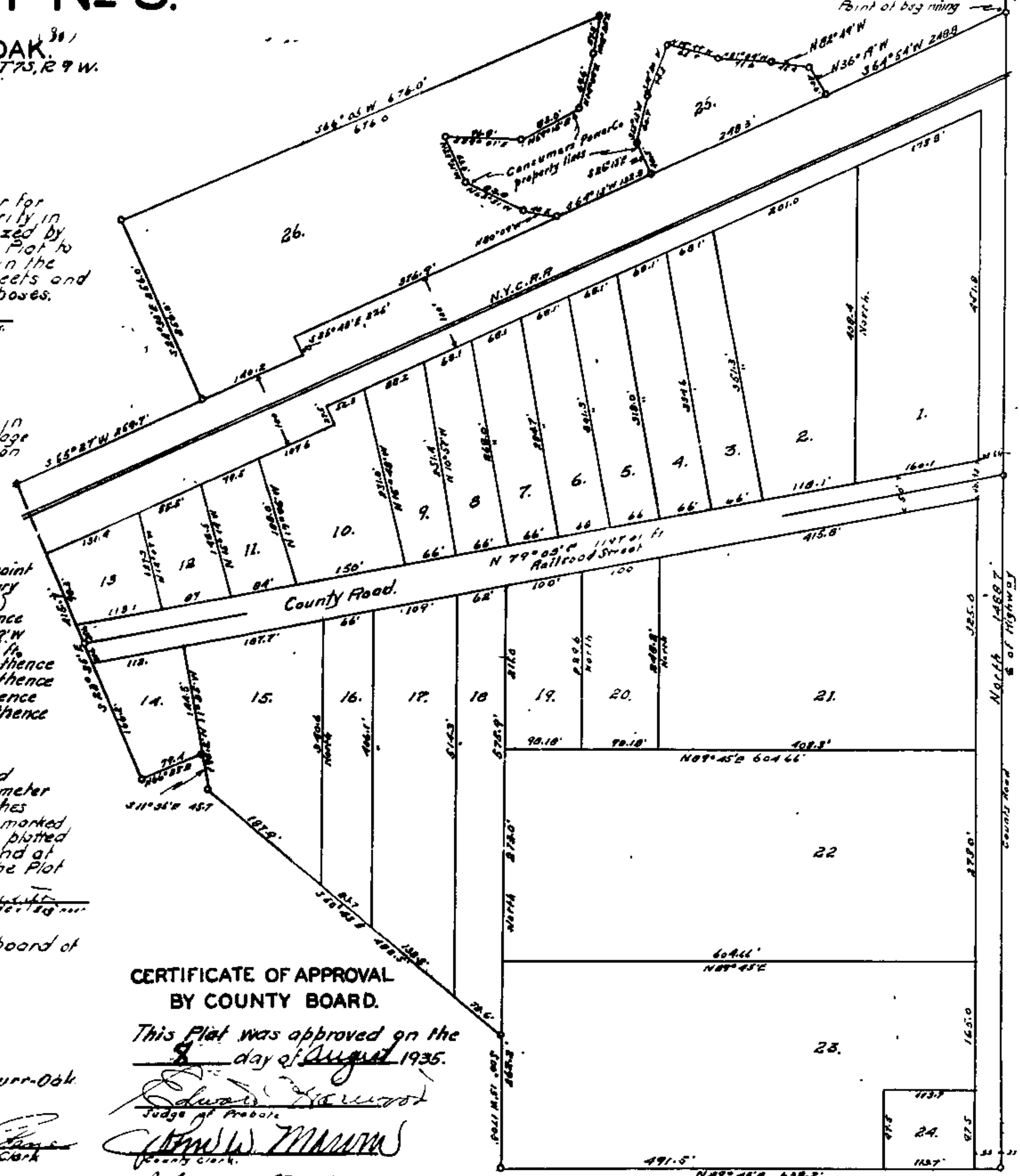
REGISTRAR'S OFFICE
ST JOSEPH COUNTY

[Signatures]
1
2
3
4
5
6
7
8
9
10
11
12
13
14
15
16
17
18
19
20
21
22
23
24
25
26
27
28
29
30
31
32
33
34
35
36
37
38
39
40
41
42
43
44
45
46
47
48
49
50
51
52
53
54
55
56
57
58
59
60
61
62
63
64
65
66
67
68
69
70
71
72
73
74
75
76
77
78
79
80
81
82
83
84
85
86
87
88
89
90
91
92
93
94
95
96
97
98
99
100

CERTIFICATE OF APPROVAL BY COUNTY BOARD.

This Plat was approved on the 8 day of August 1935.

[Signatures]
Judge of Probate
County Clerk
Treasurer



North 1488.7
County Road
North 275.0
County Road
North 275.0
County Road
North 1488.7
County Road