

ASSESSORS PLAT NO. 1

IN THE VILLAGE OF BURR-OAK.

ST. JOSEPH COUNTY MICHIGAN.

Scale 1 inch = 100 ft.

DEDICATION.

KNOW ALL MEN BY THESE PRESENTS, That I Paul L Ahlgrim Assessor for the Village of Burr Oak, St. Joseph County Michigan, By virtue of authority in me vested by Section 51 Act 178 of 1929, having been duly authorized by the Village Council, have caused the land described in the annexed plat to be surveyed, laid out and platted to be known as "Assessors Plat No. 1 of the Village of Burr Oak, St. Joseph County Michigan" and that the Streets and Alleys as shown on said plat are now being used for such purposes.

Paul L Ahlgrim
Assessor for the Village of Burr Oak

Witnesses
[Signature]
Guy L Deardorff

ACKNOWLEDGMENT.

STATE OF MICHIGAN }
County of St. Joseph. } ss

On this day 12 day of November A.D. 1934 before me a Notary Public in and for said county, personally came the above named Assessor for the Village of Burr Oak, known to me to be the person who executed the above dedication, and acknowledged the same to be his free act and deed as Assessor

My Commission Expires June 21-30 1935
[Signature]
Notary Public in and for St. Joseph County

DESCRIPTION OF LAND PLATTED

The land embraced in the annexed plat of "Assessors Plat No. 1 of the Village of Burr Oak, St. Joseph County Michigan" is described as follows - Beginning at a point 214 ft North of the East quarter corner of Section 23 T7S R9W. The boundary runs thence N84°17'W 160.8 ft thence N80°00'W 152 ft thence S 49°07'W 49 ft thence S 69°25'W 49.8 ft thence S 48°51'W 83 ft thence N 4°15'W 333.6 ft thence N 91°35'W 471.2 ft thence N 81°35'E 596.6 ft thence N 88°35'E 545.9 ft thence S 00°00'W 807.5 ft to point of beginning

SURVEYORS CERTIFICATE.

I hereby certify that the plat here on delineated is a correct one and that permanent monuments of not less than one inch in diameter and fifteen inches in length set in a concrete base of least four inches in diameter and forty-eight inches in depth have been placed at points marked thus "O" as there on shown at all angles in the boundaries of the land platted at all the intersections of streets, intersection of Alleys, or of streets and Alleys and of the intersections of streets and Alleys with the boundaries of the plat as shown on said plat.

{All dimensions are given in feet and decimals thereof
[Signature]
Registered Civil Engineer.

CERTIFICATE OF MUNICIPAL APPROVAL

This plat was approved by the common council of the Village of Burr Oak at a meeting held December 29 1934

CERTIFICATE OF APPROVAL BY COUNTY BOARD

This plat was approved on the 2nd day of January 1935

[Signature]
Judge of Probate

REGISTRY OFFICE
OFFICE OF ST. JOSEPH
STATE OF MICHIGAN
By the Clerk of the Board
[Signature]
Clerk of Board

John W. Mason
County Clerk

John W. Mason
County Treasurer

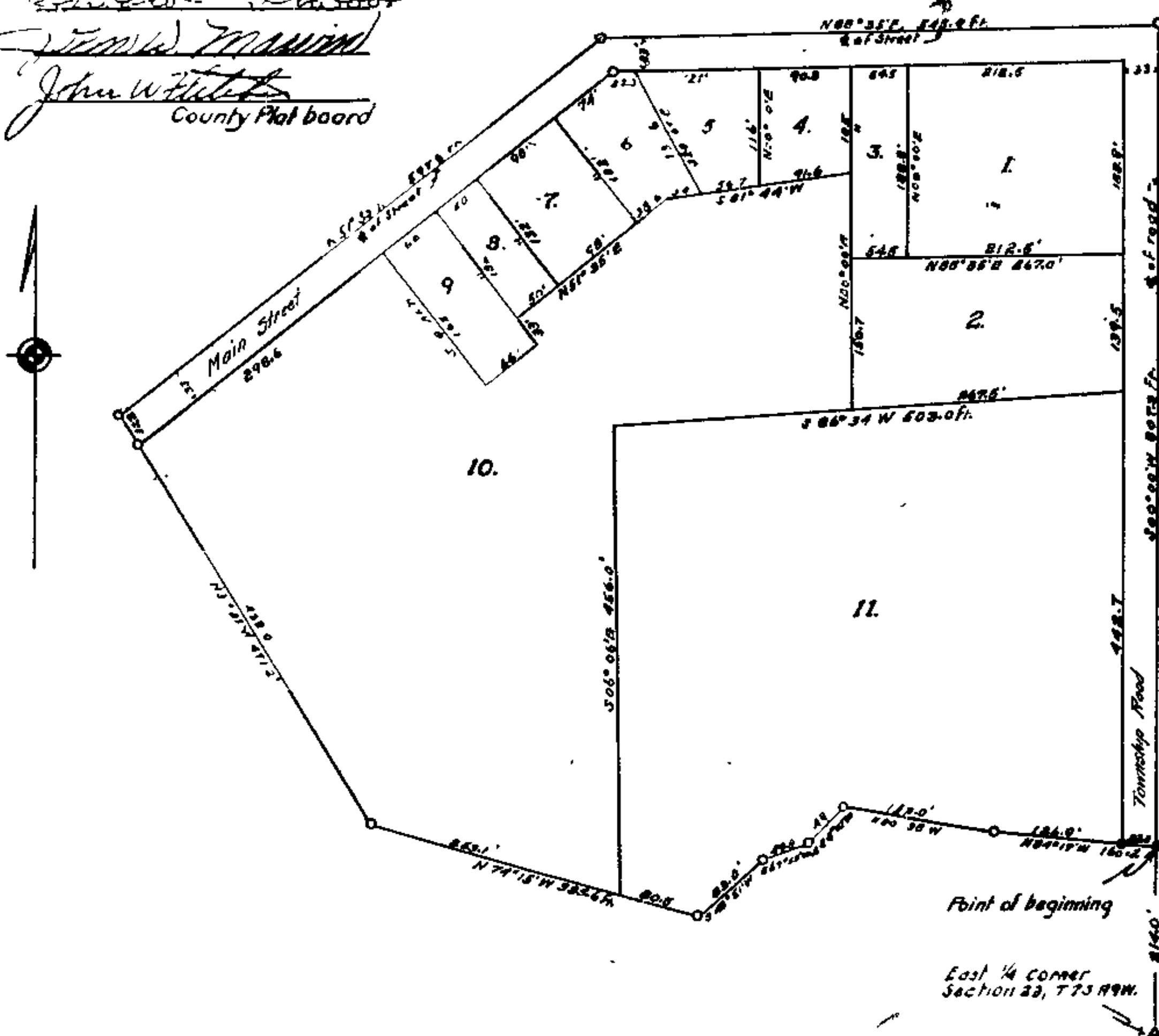
EXAMINED AND APPROVED

Board of County Road Commissioners of St. Joseph County

[Signature]
Chairman
[Signature]
[Signature]

CERTIFICATE AS TO COUNTY ROADS
We hereby certify that said plat appears to include land located on a county road.

[Signature]
John W. Mason
County Plat board



OK
5-26-35
a B. J. G.
Examined 10/10/1934
[Signature]