

Examined and Approved
 May 12-1921
 J. L. Hunsley
 Deputy Auditor General

PLAT OF NORTH SHORE

White Pigeon Township, St. Joseph County, Michigan

DESCRIPTION OF LAND PLATTED

The Plat of North Shore begins at a point 662.87 feet East from the Northwest corner of the East Half of the fractional Southwest quarter of Section 36, in Township 7 South of Range 11 West, St. Joseph County, Michigan, and running thence South 285 feet, thence West 297 feet, thence South 148.5 feet, thence South 66° East 192 feet, thence South 62° 26' East 100 feet, thence South 58° 15' East 422.75 feet, thence North 18° East 109 feet, thence South 68° 20' East 147.5 feet, thence South 53° 15' East 52.5 feet, thence North 0° 2' East 120 feet to South line of 30' driveway, thence South 53° 15' East 100 feet, thence North 0° 2' East 700 feet, thence West 662.87 feet to place of beginning.

SURVEYOR'S CERTIFICATE

I hereby certify that the Plat hereon delineated is a correct one and that permanent monuments consisting of iron pipe 1" in Di. x 20" long have been placed at all points marked thus (o) as thereon shown, at all points in the boundaries, and all intersections of streets, and streets and alleys.

DEDICATION

Know All Men By These Presents, That we, Willis B. Church and Carol B. Church, husband and wife, as proprietors, have caused the land embraced in the annexed Plat to be surveyed, laid out and platted, to be known as North Shore, St. Joseph County, Michigan, and that the streets and alleys as shown on said plat are hereby dedicated to the use of the public.

Signed and sealed in the presence of:

Willis B. Church } *Willis B. Church* L. S.
Carol B. Church } *Carol B. Church* L. S.

COUNTY OF ST. JOSEPH,
 STATE OF MICHIGAN, } ss

On this 20th day of August A. D. 1920, before me
Wilson Ross Notary Public in and for said County, personally
 came the above mentioned Willis B. Church and Carol B. Church, his wife, known to me to be the persons who executed the above Dedication, and acknowledged the same to be their free act and deed.

Wilson Ross Notary Public
 In and For St. Joseph Co., Mich.
 My Commission expires Jan. 31st 1923

CERTIFICATE OF APPROVAL BY TOWNSHIP BOARD

This Plat was approved by the Township Board of the Township of White Pigeon, St. Joseph County, Michigan, at a meeting held August 21st 1920
Charles W. Kotelik Clerk

CERTIFICATE OF APPROVAL BY COUNTY BOARD

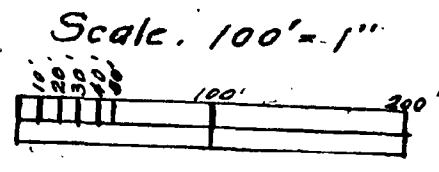
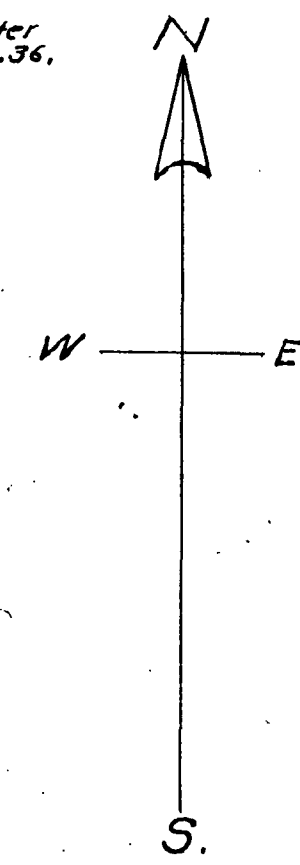
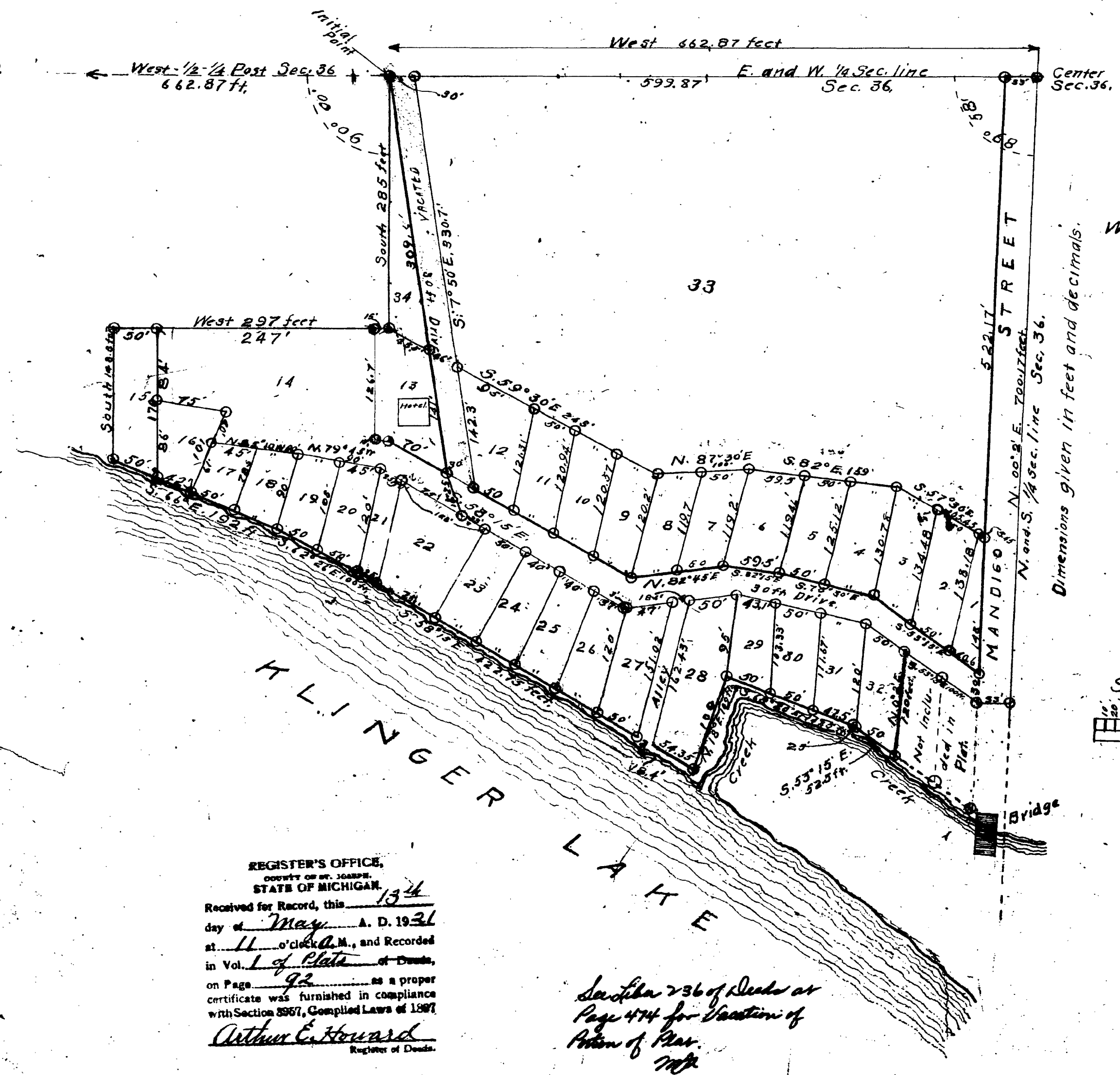
This Plat was approved on the 24th day of August 1920.
John Harrison Judge of Probate
Edward E. Harnum County Clerk
A. B. Beusteren County Treasurer

County Treasurer's Certificate Relating to Taxes

I hereby certify that there are no tax liens or titles held by the State on the lands described above, and that there are no tax liens or titles held by individuals on said lands for five years preceding the 24th day of August 1920, and that the taxes for said period of five years are paid, as shown by the records of this office.

DESCRIPTION OF LAND PLATTED

Beginning at a point 662.87 feet East from the North-west corner of the East half of the fractional Southwest quarter of section 36, in Township 7 South of Range 11 West, St. Joseph County, Michigan, and running thence South 285 feet, thence West 297 feet, thence South 148.5 feet, thence South 66° East 192 feet, thence South 62° 26' East 100 feet, thence South 58° 15' East 422.75 feet, thence North 18° East 109 feet, thence South 68° 20' East 147.5 feet, thence South 53° 15' East 52.5 feet, thence North 0° 2' East 120 feet, thence South 53° 15' East 100 feet, thence North 0° 2' East 700 feet, thence West 662.87 feet to place of beginning.



REGISTER'S OFFICE,
 COUNTY OF ST. JOSEPH,
 STATE OF MICHIGAN.
 Received for Record, this 13th
 day of May A. D. 1921
 at 11 o'clock A.M., and Recorded
 in Vol. 1 of Plats of Deeds,
 on Page 92 as a proper
 certificate was furnished in compliance
 with Section 3967, Compiled Laws of 1907.
Arthur E. Howard
 Register of Deeds.

*See also 736 of Deeds on
 Page 474 for Location of
 Point of Plat.
 7/17*

Dimensions given in feet and decimals.