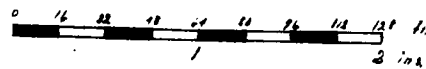


MOUND SPRINGS

Scale 64 feet to 1 inch



Description.

The land embraced in the annexed plat of Mound Springs is located in SW 1/4 NE 1/4 and NW 1/4 SE 1/4 Sec. 1 T8S R11W; and is described as follows:

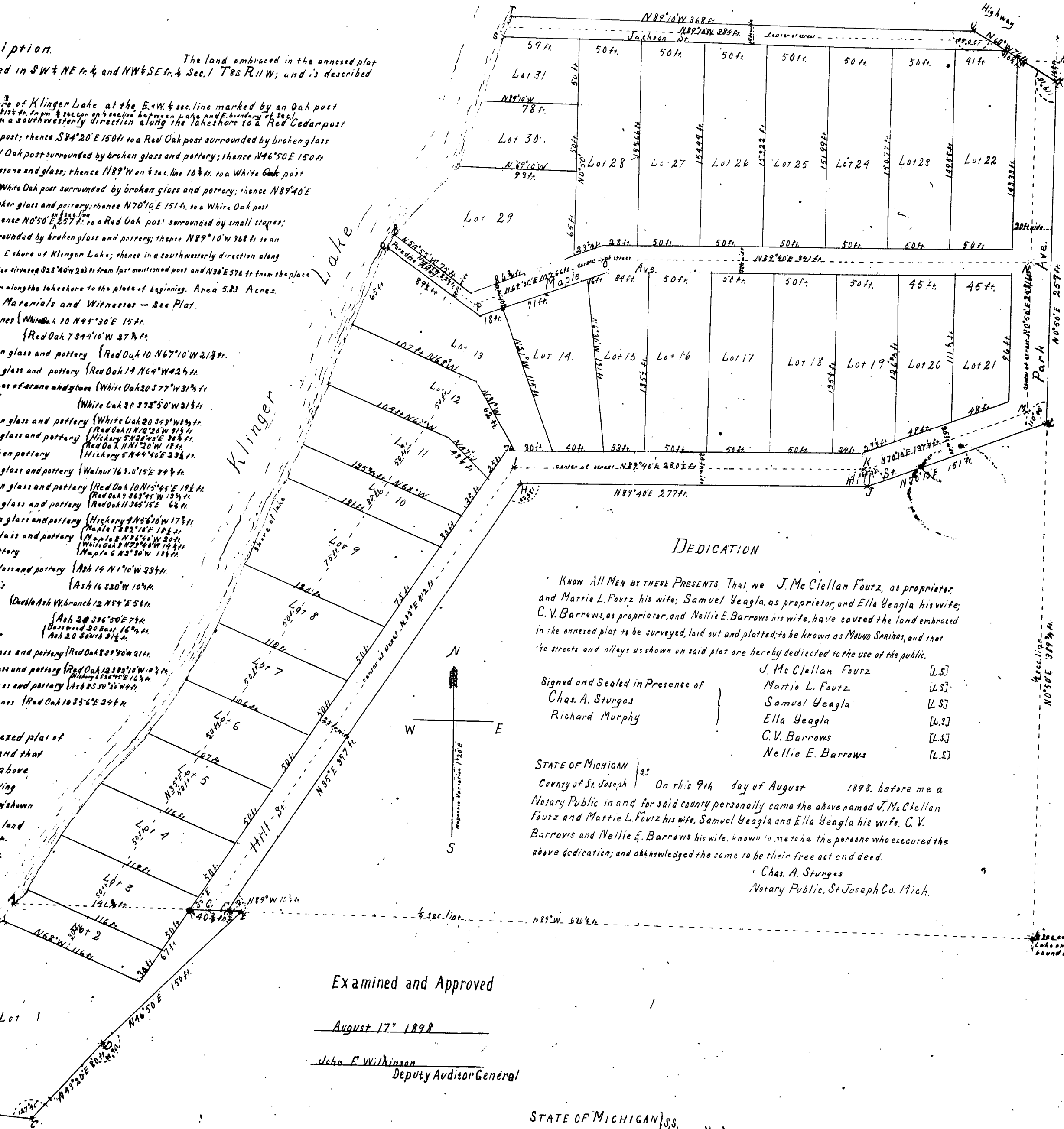
Commencing on the East shore of Klinger Lake at the E-W sec. line marked by an Oak post situated N89°10'W 216 ft. from a section corner between Lake and E. boundary of Sec. 1, thence in a southwesterly direction along the lakeshore to a Red Cedar post S41°20'W 200 ft. from first mentioned post; thence S84°20'E 150 ft. to a Red Oak post surrounded by broken glass and pottery; thence N43°20'E 80 ft. to a Red Oak post surrounded by broken glass and pottery; thence N46°50'E 150 ft. to a White Oak post surrounded by pieces of stone and glass; thence N87°W on 1/4 sec. line 10 3/4 ft. to a White Oak post with a stone on top; thence N35°E 99 7/8 ft. to a White Oak post surrounded by broken glass and pottery; thence N89°40'E 277 ft. to a White Oak post surrounded by broken glass and pottery; thence N70°10'E 151 ft. to a White Oak post surrounded by broken glass and pottery; thence N0°50'E 257 ft. to a Red Oak post surrounded by small stones; thence N65°W 76 ft. to a Red Oak post surrounded by broken glass and pottery; thence N89°10'W 368 ft. to an Ironwood post surrounded by pebbles, on the E shore of Klinger Lake; thence in a southwesterly direction along the lakeshore to a Red Oak post surrounded by pebbles situated 322'40" (20) ft. from last mentioned post and N36°E 576 ft. from the place of beginning; thence in a southwesterly direction along the lakeshore to the place of beginning. Area 5.23 Acres.

Principal Monuments - Materials and Witnesses - See Plat.

- A Oak post surrounded by small stones (White Oak 10 N45°30'E 15 ft.)
- B Red Cedar post 25' x 3 1/2" (Red Oak 734'10"W 37 3/4 ft.)
- C Red Oak post surrounded by broken glass and pottery (Red Oak 10 N67°10'W 219 ft.)
- D Red Oak post surrounded by broken glass and pottery (Red Oak 14 N64°W 42 1/2 ft.)
- E White Oak post surrounded by pieces of stone and glass (White Oak 20 S77°W 31 3/4 ft.)
- F White Oak post, stone on top (White Oak 20 S78°50'W 21 3/4 ft.)
- G White Oak post surrounded by broken glass and pottery (White Oak 20 S53°W 14 1/4 ft.)
- H White Oak post surrounded by broken glass and pottery (White Oak 20 S24°E 24 1/2 ft.)
- I White Oak post surrounded by broken pottery (Red Oak 14 N1°20'W 18 ft.)
- J White Oak post surrounded by broken glass and pottery (White Oak 20 S44°40'E 23 1/2 ft.)
- K White Oak post surrounded by broken glass and pottery (Walnut 16 S. 0°15'E 24 1/2 ft.)
- L White Oak post surrounded by broken glass and pottery (Red Oak 10 N15°35'E 19 1/2 ft.)
- M White Oak post surrounded by broken glass and pottery (Red Oak 11 S65°15'E 4 1/2 ft.)
- N Walnut post surrounded by broken glass and pottery (Hickory 4 N8°10'W 17 1/2 ft.)
- O White Oak post surrounded by broken glass and pottery (Walnut 16 S21°10'E 12 1/2 ft.)
- P White Oak post surrounded by broken glass and pottery (White Oak 20 S29°40'W 14 1/2 ft.)
- Q White Oak post surrounded by broken glass and pottery (Ash 14 N1°10'W 23 1/2 ft.)
- R Red Oak post surrounded by pebbles (Ash 16 S20°W 10 1/4 ft.)
- S White Oak post surrounded by pebbles (Oakleaf 12 N12°E 5 1/2 ft.)
- T Red Oak post surrounded by pebbles (Ash 20 S25°50'E 7 1/2 ft.)
- U Ironwood post surrounded by pebbles (Ironwood 20 S25°E 16 1/2 ft.)
- V Red Oak post surrounded by broken glass and pottery (Red Oak 20 S29°50'W 21 1/2 ft.)
- W Red Oak post surrounded by broken glass and pottery (Red Oak 13 S25°10'W 10 1/2 ft.)
- X Red Oak post surrounded by broken glass and pottery (Ash 20 S25°50'E 7 1/2 ft.)
- Y Red Oak post surrounded by broken glass and pottery (Red Oak 13 S25°10'W 10 1/2 ft.)
- Z Red Oak post surrounded by broken glass and pottery (Ash 20 S25°50'E 7 1/2 ft.)

I hereby certify that the annexed plat of Mound Springs is a correct one; and that permanent monuments as described above have been planted at the corresponding points marked on the plat, as shown at all angles in the boundaries of the land plotted; and as all roads, angles and other sections of streets, or streets and alleys.

Victor H. Todd
Deputy County Surveyor
St. Joseph County
Mich.



DEDICATION

Know All Men by these Presents, That we J. McClellan Foutz, as proprietor, and Mattie L. Foutz his wife; Samuel Yeagla, as proprietor, and Ella Yeagla his wife; C. V. Barrows, as proprietor, and Nellie E. Barrows his wife, have caused the land embraced in the annexed plat to be surveyed, laid out and plotted; to be known as Mound Springs, and that the streets and alleys as shown on said plat are hereby dedicated to the use of the public.

Signed and Sealed in Presence of
Chas. A. Sturges
Richard Murphy

J. McClellan Foutz [L.S.]
Mattie L. Foutz [L.S.]
Samuel Yeagla [L.S.]
Ella Yeagla [L.S.]
C. V. Barrows [L.S.]
Nellie E. Barrows [L.S.]

STATE OF MICHIGAN } ss
County of St. Joseph } On this 9th day of August 1898, before me a Notary Public in and for said county personally came the above named J. McClellan Foutz and Mattie L. Foutz his wife, Samuel Yeagla and Ella Yeagla his wife, C. V. Barrows and Nellie E. Barrows his wife, known to me to be the persons who executed the above dedication; and acknowledged the same to be their free act and deed.

Chas. A. Sturges
Notary Public, St. Joseph Co., Mich.

Examined and Approved

August 17 1898

John F. Wilkinson
Deputy Auditor General

Sept. 7 1898
Darius A. Babcock
County Clerk

STATE OF MICHIGAN } ss
County of St. Joseph } We L. Valentin, Register of Deeds and Victor H. Todd, Deputy County Surveyor, hereby certify that we have each carefully compared this copy with the original plat of Mound Springs, and that it is an exact copy thereof and of the whole of such original map or plat.

L. Valentin
Victor H. Todd
Register of Deeds
Deputy County Surveyor

RECEIVED FOR RECORD
COUNTY OF ST. JOSEPH
Received for Record, this 7th day of Sept A. D. 1898 at 1:30 o'clock P. M., and Recorded in Vol. 1 of Deeds, on Page 18
L. Valentin
Register of Deeds.