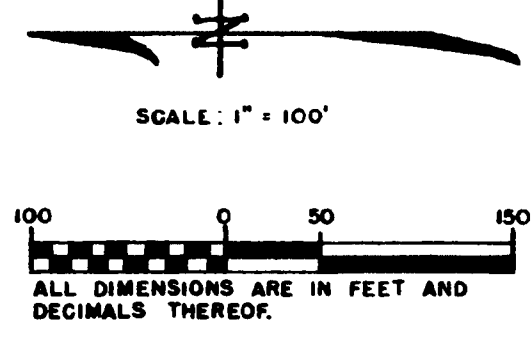
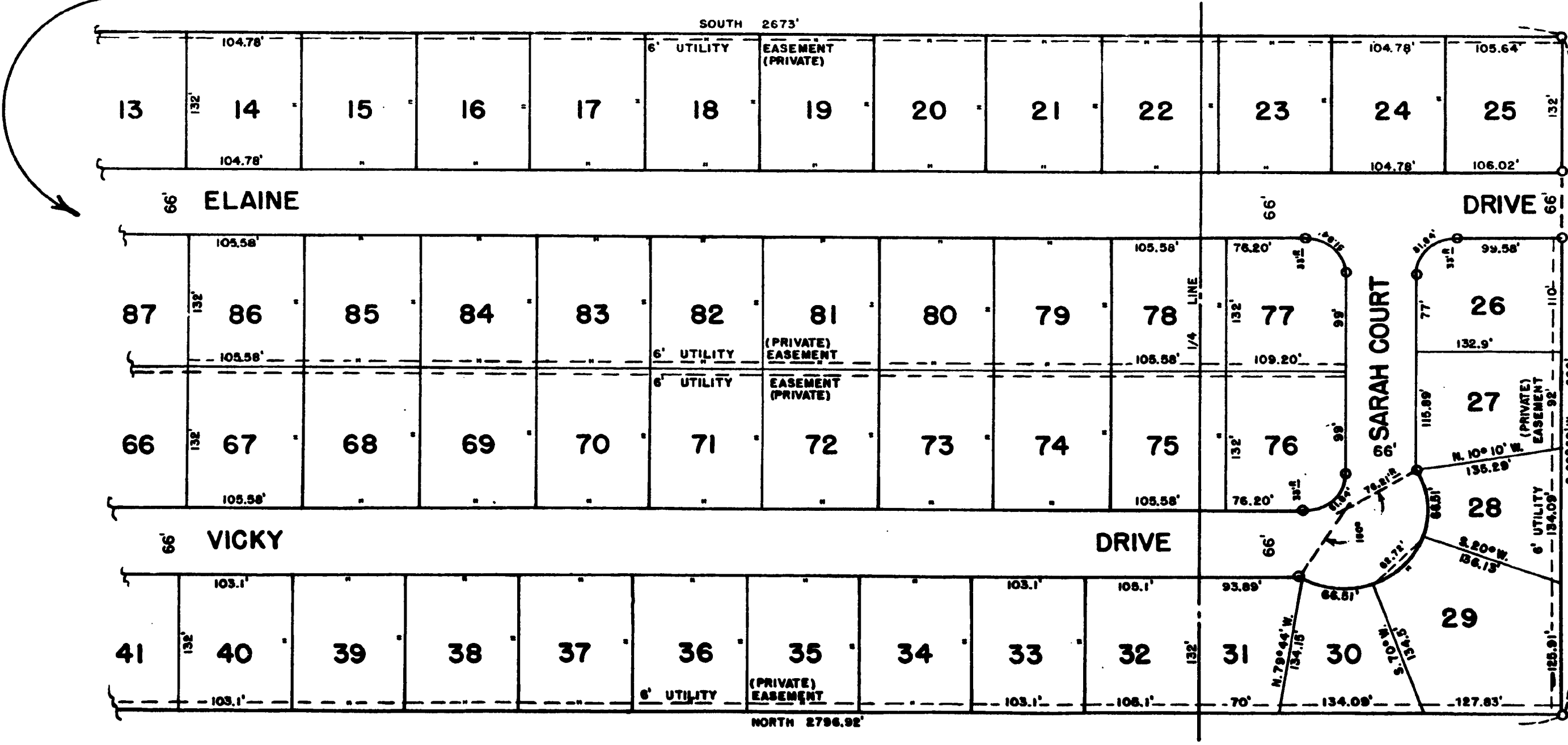
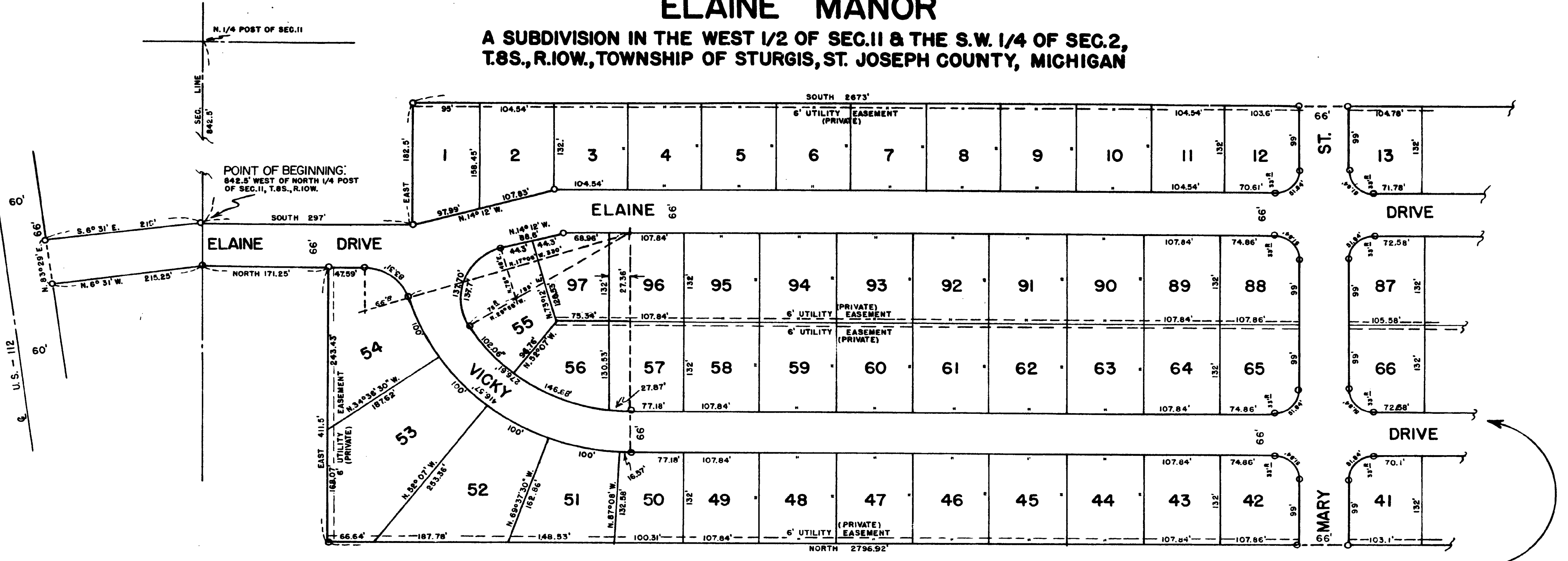


ELAINE MANOR

A SUBDIVISION IN THE WEST 1/2 OF SEC. II & THE S.W. 1/4 OF SEC. 2,
T.8S., R.10W., TOWNSHIP OF STURGIS, ST. JOSEPH COUNTY, MICHIGAN



EXAMINED AND APPROVED

Date SEP 20 1954

John B. Martin, Auditor General

By D.J. Mackleroy, Plat Engineer

ELAINE MANOR

A SUBDIVISION IN THE WEST 1/2 OF SEC. II & THE S.W. 1/4 OF SEC. 2, T.8S., R.10W., TOWNSHIP OF STURGIS, ST. JOSEPH COUNTY, MICHIGAN

DEDICATION

KNOW ALL MEN BY THESE PRESENTS, that we... Elaine Manor... Subdivision, Incorporated, a Michigan Corporation by Bernard Nathan, President, and Louis Benson, Secretary, as proprietor, have caused the land embraced in the annexed plat to be surveyed, laid out and platted to be known as "Elaine Manor" a subdivision in the West 1/2 of Section 11 and the Southwest 1/4 of Section 2, T.8 S., R.10 W., Township of Sturgis, St. Joseph County, Michigan, and that the roads shown within the boundaries of said plat are hereby dedicated to the use of the public and that the 6 feet private easements as shown on said plat on Lots 1 through 25, 77 through 97, 56 through 76 and 26 through 54 are dedicated for public utilities.

Signed and Sealed in the Presence of:

JAY R. WHITE, JR. (Witness)

Bernard Nathan, President

MARGARET J. WHITE (Witness)

Louis Benson, Secretary

DESCRIPTION OF LAND PLATTED

The land embraced in the annexed plat of "ELAINE MANOR" a subdivision in the West 1/2 of Section 11 and the Southwest 1/4 of Section 2, T.8 S., R.10 W., Township of Sturgis, St. Joseph County, Michigan is described as follows: Beginning at a point on the Section line 842.5 feet West of the North 1/2 post of said Section 11 and running thence South 297 feet; thence East 182.5 feet; thence South 2673 feet; thence South 89 degrees 50 minutes West 660 feet; thence North 2796.92 feet; thence East 411.5 feet; thence North 171.25 feet; thence North 6 degrees 31 minutes West 215.25 feet; thence North 83 degrees 29 minutes East 66 feet; thence South 6 degrees 31 minutes E 219 feet to beginning.

SURVEYOR'S CERTIFICATE

I hereby certify that the plat hereon delineated is a correct one, and that permanent monuments consisting of iron rods at least one half inch in diameter and 48 inches in length, encased in concrete cylinders four inches in diameter and 48 inches in length, have been set at points marked thus (O) as thereon shown at all angles in the boundaries of the land platted, at all intersections of the lines of streets and at intersections of the lines of streets with the boundaries of the plat.

Earl N. James, Registered Professional Engineer

APPROVAL BY BOARD OF COUNTY ROAD COMMISSIONERS

This plat has been examined and was approved on the 20th day of September, 1954 by the St. Joseph County Board of Road Commissioners.

Chairman: Ivan Bent; Members: Paul L. Ahlerim, Noyes T. Percy

CERTIFICATE AS TO STATE TRUNK LINE OR FEDERAL AID ROADS

We hereby certify that said plat appears to include land located on a state trunk line or federal aid road.

Eleanor C. Russell, (County Register of Deeds); John W. Marvin, (County Clerk); Eva M. Brumbaugh, (County Treasurer); Richard Olin, (County Drain Commissioner)

COUNTY TREASURER'S CERTIFICATE

Office of County Treasurer, St. Joseph County. I hereby certify, that there are no tax liens or titles held by the State on the lands described hereon, and that there are no tax liens or titles held by individuals on said lands, for the five years preceding the 13th day of September, 1954 and that the taxes for said period of five years are all paid, as shown by the records of this office.

Eva M. Brumbaugh, County Treasurer

ACKNOWLEDGMENT

STATE OF MICHIGAN

County of St. Joseph

On this 23rd day of August, 1954, before me, a Notary Public in and for said County, personally came the above named Bernard Nathan and Louis Benson, who being each by me duly sworn did say that they are the President and Secretary respectively of Elaine Manor Subdivision Incorporated a Michigan corporation, and that said instrument was signed and sealed in behalf of said corporation by authority of its Board of Directors and the said Elaine Manor Subdivision Incorporated acknowledged said instrument to be the free act and deed of said corporation. Note: "Corporation has no corporate seal."

Bernard S. Kahn, Notary Public, My Commission expires 1-19-57

APPROVAL BY COUNTY PLAT BOARD

This plat was approved on the 15th day of September, 1954 by the St. Joseph County Plat Board

Eleanor C. Russell, (County Register of Deeds); John W. Marvin, (County Clerk); Eva M. Brumbaugh, (County Treasurer); Richard Olin, (County Drain Commissioner)

MUNICIPAL APPROVAL

This plat was approved by the Township Board of the Township of Sturgis at a meeting held Sept. 6, 1954

Irvin C. Clark, Clerk

REGISTER'S OFFICE, COUNTY OF ST. JOSEPH, STATE OF MICHIGAN

Received for Record, this 21st day of September, A. D. 1954 at 9:05 o'clock A.M., and Recorded in Vol. 3 of Plats on Page 35 and 35A Eleanor C. Russell, Register of Deeds

APPROVED Charles M. Ziegler, CHARLES M. ZIEGLER, STATE HIGHWAY COMMISSIONER