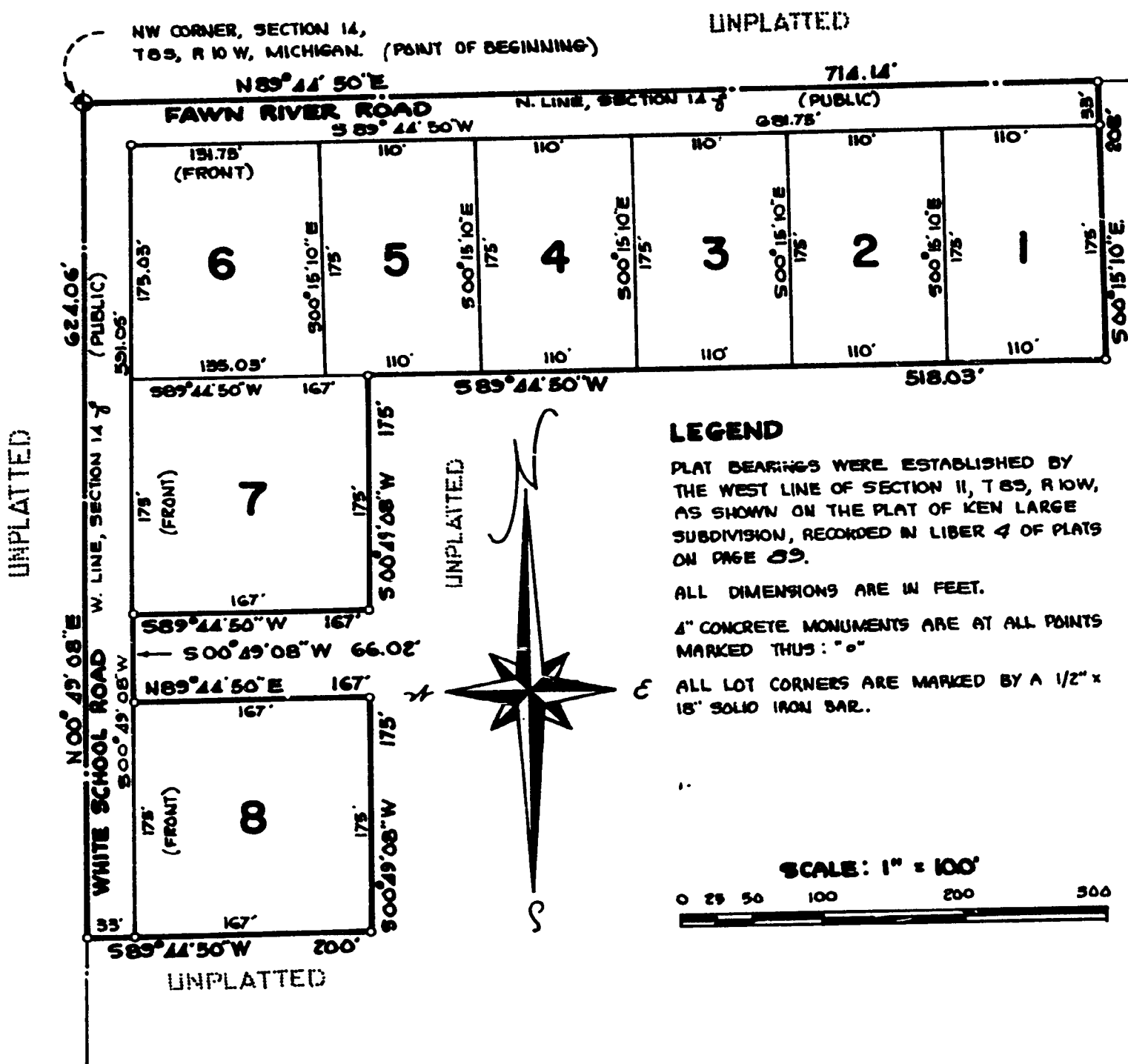


ANDERSON SUBDIVISION

A SUBDIVISION SITUATED IN THE NW 1/4 OF THE NW 1/4 OF SECTION 14, TOWN 8 SOUTH, RANGE 10 WEST, STURGIS TOWNSHIP, ST. JOSEPH COUNTY, MICHIGAN.

In Partial Payment of Ltr 360 of Records, App 143-145 inclusive



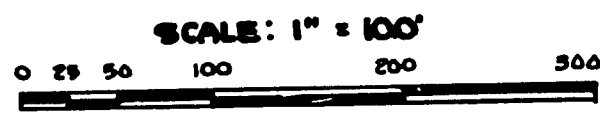
LEGEND

PLAT BEARINGS WERE ESTABLISHED BY THE WEST LINE OF SECTION 11, T8S, R10W, AS SHOWN ON THE PLAT OF KEN LARUE SUBDIVISION, RECORDED IN LIBER 4 OF PLATS ON PAGE 33.

ALL DIMENSIONS ARE IN FEET.

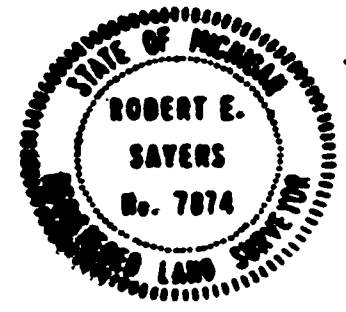
1" CONCRETE MONUMENTS ARE AT ALL POINTS MARKED THUS: "o"

ALL LOT CORNERS ARE MARKED BY A 1/2" x 15" SOLID IRON BAR.



SURVEYOR'S CERTIFICATE:

I, ROBERT E. SAYERS, SURVEYOR, CERTIFY: THAT I HAVE SURVEYED, DIVIDED AND MAPPED THE LAND SHOWN ON THIS PLAT, DESCRIBED AS FOLLOWS; ANDERSON SUBDIVISION, A SUBDIVISION SITUATED IN THE NW 1/4 OF THE NW 1/4 OF SECTION 14, TOWN 8 SOUTH, RANGE 10 WEST, STURGIS TOWNSHIP, ST. JOSEPH COUNTY, MICHIGAN, IS DESCRIBED AS FOLLOWS; COMMENCING AT THE NW CORNER OF SAID SECTION 14, WHICH IS THE POINT OF BEGINNING, AND RUNNING THENCE N89°44'50"E ALONG THE NORTH LINE OF SAID SECTION FOR 714.14 FEET, THENCE S00°15'10"E 208 FEET, THENCE S89°44'50"W 518.03 FEET, THENCE S00°49'08"W 175 FEET, THENCE S89°44'50"W 167 FEET, THENCE S00°49'08"W 66.02 FEET, THENCE N89°44'50"E 167 FEET, THENCE S00°49'08"W 175 FEET, THENCE S89°44'50"W 200 FEET TO THE WEST LINE OF SAID SECTION 14, THENCE N00°49'08"E ALONG SAID WEST SECTION LINE 624.06 FEET TO THE POINT OF BEGINNING. THIS SUBDIVISION CONTAINS 8 NUMBERED LOTS. THAT I HAVE MADE SUCH SURVEY, LAND DIVISION AND PLAT BY THE DIRECTION OF THE OWNERS OF SUCH LAND. THAT SUCH PLAT IS A CORRECT REPRESENTATION OF ALL THE EXTERIOR BOUNDARIES OF THE LAND SURVEYED AND THE SUBDIVISION OF IT. THAT THE REQUIRED MONUMENTS AND LOT MARKERS HAVE BEEN LOCATED IN THE GROUND AS REQUIRED BY SECTION 125 OF THE ACT. THAT THE ACCURACY OF THE SURVEY IS WITHIN THE LIMITS REQUIRED BY SECTION 126 OF THE ACT. THAT THE BEARINGS SHOWN ON THE PLAT ARE EXPRESSED AS REQUIRED BY SECTION 126 (3) OF THE ACT AND AS EXPLAINED IN THE LEGEND.



MAY 20, 1972
 DATE
 ROBERT E. SAYERS, REGISTERED LAND SURVEYOR # 7874
 P.O. BOX 212, STURGIS, MICHIGAN, 49091

EXAMINED AND APPROVED
 Date Aug 2, 1972
 Allison Green
 STATE TREASURER
 Richard E. Lamm, Not Public

CERTIFICATE OF MUNICIPAL APPROVAL:

I CERTIFY THAT THIS PLAT WAS APPROVED BY THE TOWNSHIP BOARD OF THE TOWNSHIP OF STURGIS AT A MEETING HELD June 5, 1972, AND WAS REVIEWED AND FOUND TO BE IN COMPLIANCE WITH ACT 288, P.A. 1967. THIS PLAT WAS APPROVED ON APRIL 12, 1972 BY THE ST. JOSEPH COUNTY HEALTH DEPARTMENT.

Christine Feller
 CHRISTINE FELLER, CLERK

COUNTY DRAIN COMMISSIONER'S CERTIFICATE:

APPROVED ON MAY 21, 1972 AS COMPLYING WITH SECTION 192 OF ACT 288, P.A. 1967 AND THE APPLICABLE PUBLISHED RULES AND REGULATIONS OF MY OFFICE IN THE COUNTY OF ST. JOSEPH.

Lloyd S. Cupp
 LLOYD S. CUPP, DRAIN COMMISSIONER

COUNTY PLAT BOARD CERTIFICATE:

THIS PLAT HAS BEEN REVIEWED AND IS APPROVED BY THE ST. JOSEPH COUNTY PLAT BOARD ON June 14, 1972 AS BEING IN COMPLIANCE WITH ALL OF THE PROVISIONS OF ACT 288, P.A. 1967 AND THE PLAT BOARD'S APPLICABLE RULES AND REGULATIONS.

Donna E. Donmyer
 DONNA E. DONMYER, REGISTER OF DEEDS

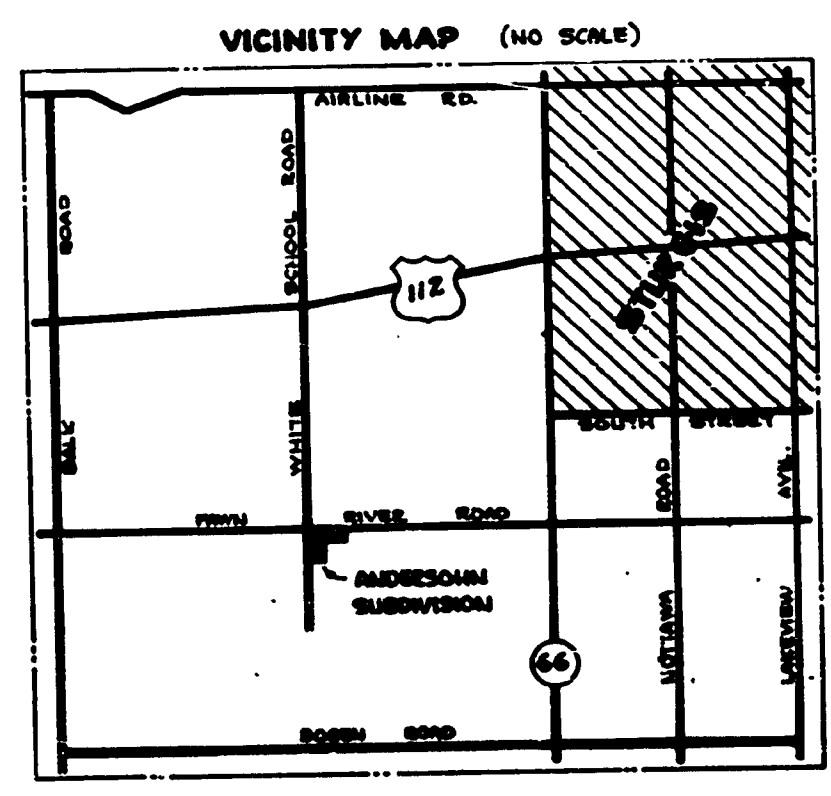
Stanley M. Huff
 STANLEY M. HUFF, COUNTY TREASURER

John W. Marvin
 JOHN W. MARVIN, COUNTY CLERK

REGISTER OF DEEDS OFFICE 55
 COUNTY OF ST. JOSEPH

THIS PLAT OF ANDERSON SUBDIVISION WAS RECORDED THIS 4TH DAY OF August, 1972 AT 2:00 O'CLOCK P.M. IN LIBER 5 OF PLATS ON PAGE 42

Donna E. Donmyer
 DONNA E. DONMYER, REGISTER OF DEEDS



COUNTY TREASURER'S CERTIFICATE:

RECORDS IN MY OFFICE SHOW NO UNPAID TAXES OR SPECIAL ASSESSMENTS FOR THE FIVE YEARS PRECEDING MAY 31, 1972, INVOLVING THE LANDS INCLUDED IN THIS PLAT.

Stanley M. Huff
 STANLEY M. HUFF, COUNTY TREASURER

CERTIFICATE OF COUNTY ROAD COMMISSIONERS:

APPROVED ON JUNE 1, 1972 AS COMPLYING WITH SECTIONS 185 OF ACT 288, P.A. 1967, AND THE APPLICABLE PUBLISHED RULES AND REGULATIONS OF THE BOARD OF ROAD COMMISSIONERS OF ST. JOSEPH COUNTY.

Frank Whellenbarger
 FRANK WHELLENBARGER, CHAIRMAN

Carl L. Roberts
 CARL L. ROBERTS, MEMBER

D.W. Arney
 D.W. ARNEY, MEMBER

PROPRIETOR'S CERTIFICATE:

WE, AS PROPRIETORS, CERTIFY THAT WE HAVE CAUSED THE LAND EMBRACED IN THIS PLAT TO BE SURVEYED, DIVIDED, MAPPED AND DEDICATED AS REPRESENTED ON THIS PLAT AND THAT PORTION OF FAWN RIVER ROAD AND WHITE SCHOOL ROAD WHICH FALLS WITHIN THE BOUNDARY OF SAID PLAT ARE FOR THE USE OF THE PUBLIC; THAT THE PUBLIC UTILITY EASEMENTS ARE PRIVATE EASEMENTS AND THAT ALL OTHER EASEMENTS ARE FOR THE USES SHOWN ON THE PLAT.

Emerson L. Anderson
 EMERSON L. ANDERSON
 814 WHITE SCHOOL ROAD
 STURGIS, MICHIGAN, 49091

Betty C. Anderson
 BETTY C. ANDERSON
 814 WHITE SCHOOL ROAD
 STURGIS, MICHIGAN, 49091

Robb Brownridge
 ROBB BROWNBRIDGE
 841 S. NOTTAWA RD.
 STURGIS, MICHIGAN, 49091

Virginia Brownridge
 VIRGINIA BROWNBRIDGE
 841 S. NOTTAWA RD.
 STURGIS, MICHIGAN, 49091

Samuel Ford
 SAMUEL FORD
 P.O. # 3
 STURGIS, MICHIGAN, 49091

Lida Ford
 LIDA FORD
 P.O. # 3
 STURGIS, MICHIGAN, 49091

George F. Rohrs
 GEORGE F. ROHRS
 W. FAWN RIVER RD.
 STURGIS, MICHIGAN, 49091

Emma F. Rohrs
 EMMA F. ROHRS
 W. FAWN RIVER RD.
 STURGIS, MICHIGAN, 49091

Robert E. Sayers
 ROBERT E. SAYERS, WITNESS

Jean L. Sayers
 JEAN L. SAYERS, WITNESS

ACKNOWLEDGEMENT:

STATE OF MICHIGAN 55
 COUNTY OF ST. JOSEPH

PERSONALLY CAME BEFORE ME THIS 26th DAY OF May, 1972 THE ABOVE NAMED EMERSON L. ANDERSON AND BETTY C. ANDERSON, HIS WIFE, ROBB BROWNBRIDGE AND VIRGINIA BROWNBRIDGE, HIS WIFE, SAMUEL FORD AND LIDA FORD, HIS WIFE AND GEORGE F. ROHRS AND EMMA F. ROHRS, HIS WIFE, TO ME KNOWING TO BE THE PERSONS WHO EXECUTED THE FOREGOING INSTRUMENT AND ACKNOWLEDGED THAT THEY EXECUTED THE SAME AS THEIR FREE ACT AND DEED.

NOTARY PUBLIC, *Jean L. Sayers*, St. Joseph County, Michigan
 JEAN L. SAYERS
 MY COMMISSION EXPIRES: May 27, 1972