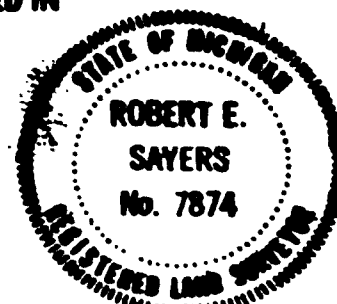


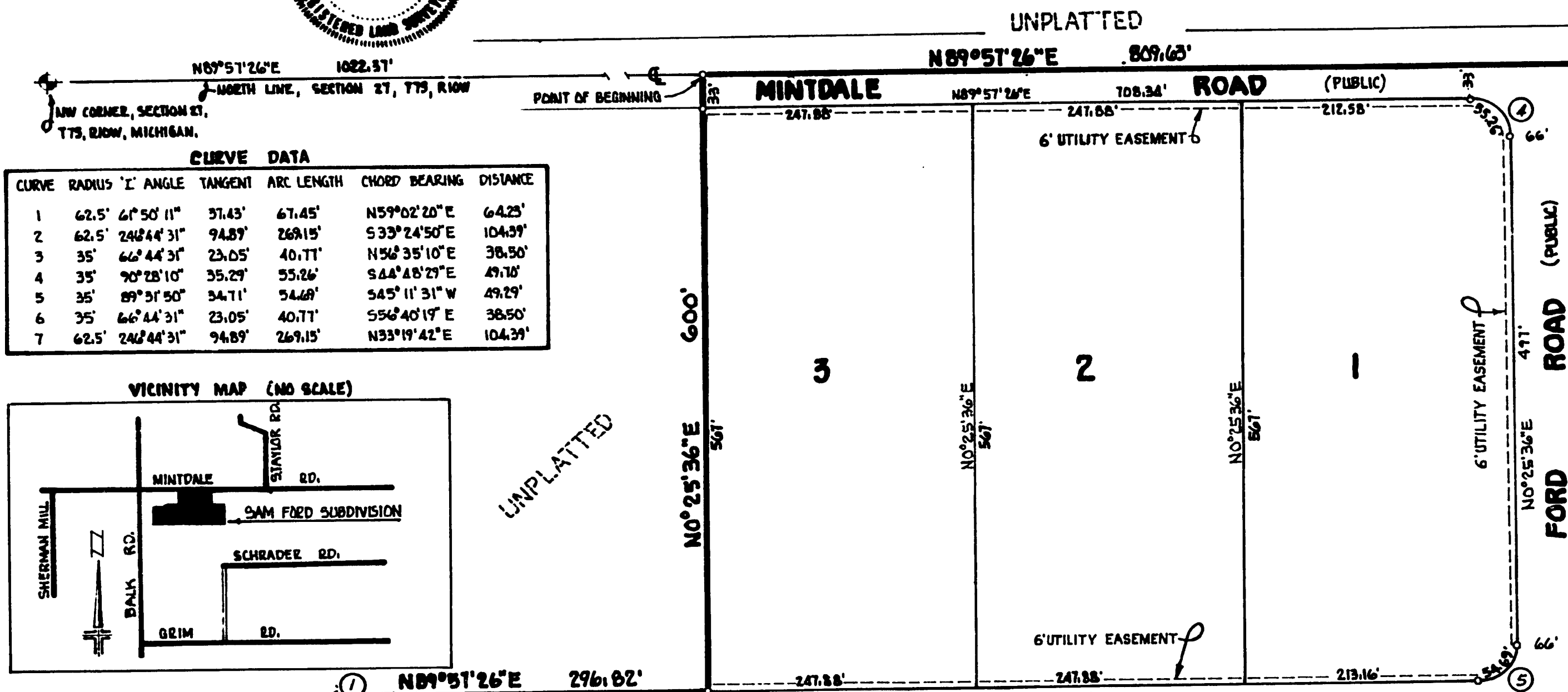
**RESTRICTION CERTIFICATE**

THIS PLAT IS SUBJECT TO RESTRICTIONS REQUIRED BY ACT 205 RA. 1967 AS AMENDED ON CERTAIN LOTS WITH RESPECT TO THE MICHIGAN DEPARTMENT OF PUBLIC HEALTH WHICH ARE RECORDED IN LIBER 392 OF DEEDS ON PAGES 67- OF RECORD IN THIS COUNTY. *pp. 362-365 incl.*



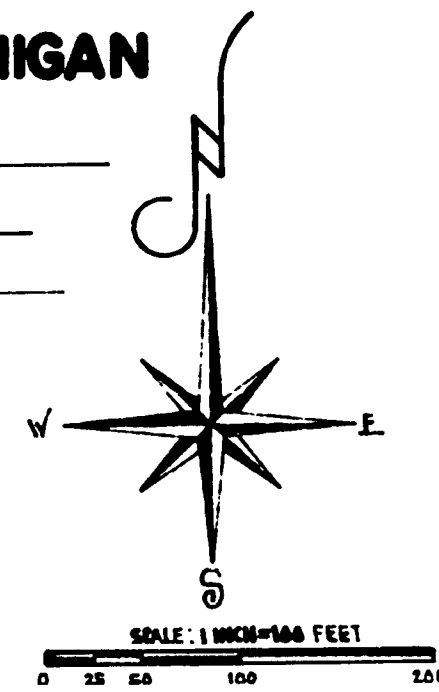
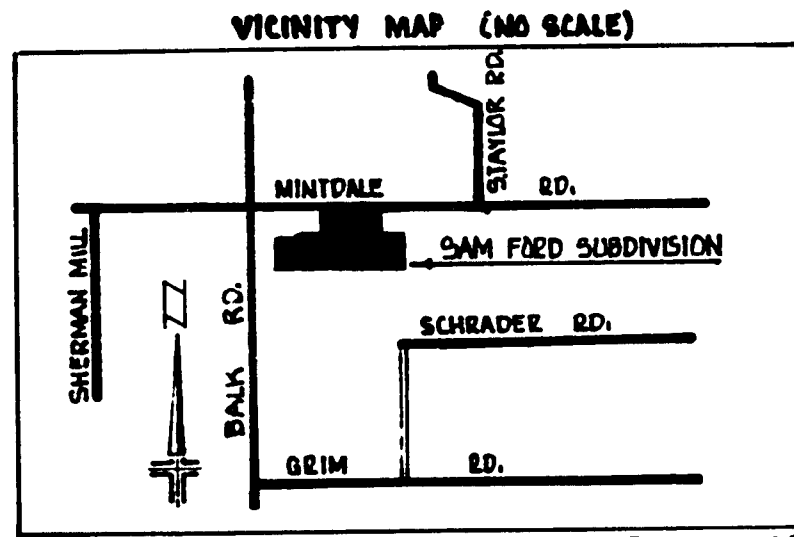
# SAM FORD SUBDIVISION

A SUBDIVISION SITUATED IN THE NORTH 1/2 OF THE NW 1/4 OF SECTION 27, T7S, R10W, SHERMAN TOWNSHIP, ST. JOSEPH COUNTY, MICHIGAN

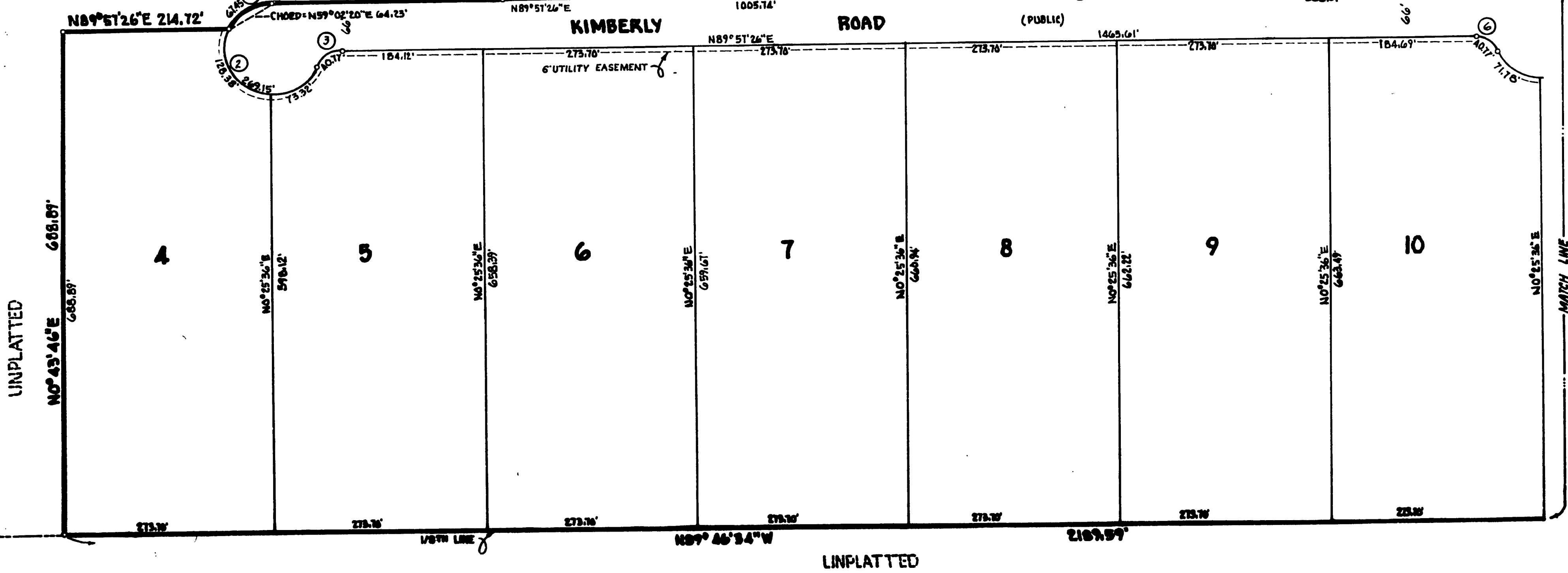
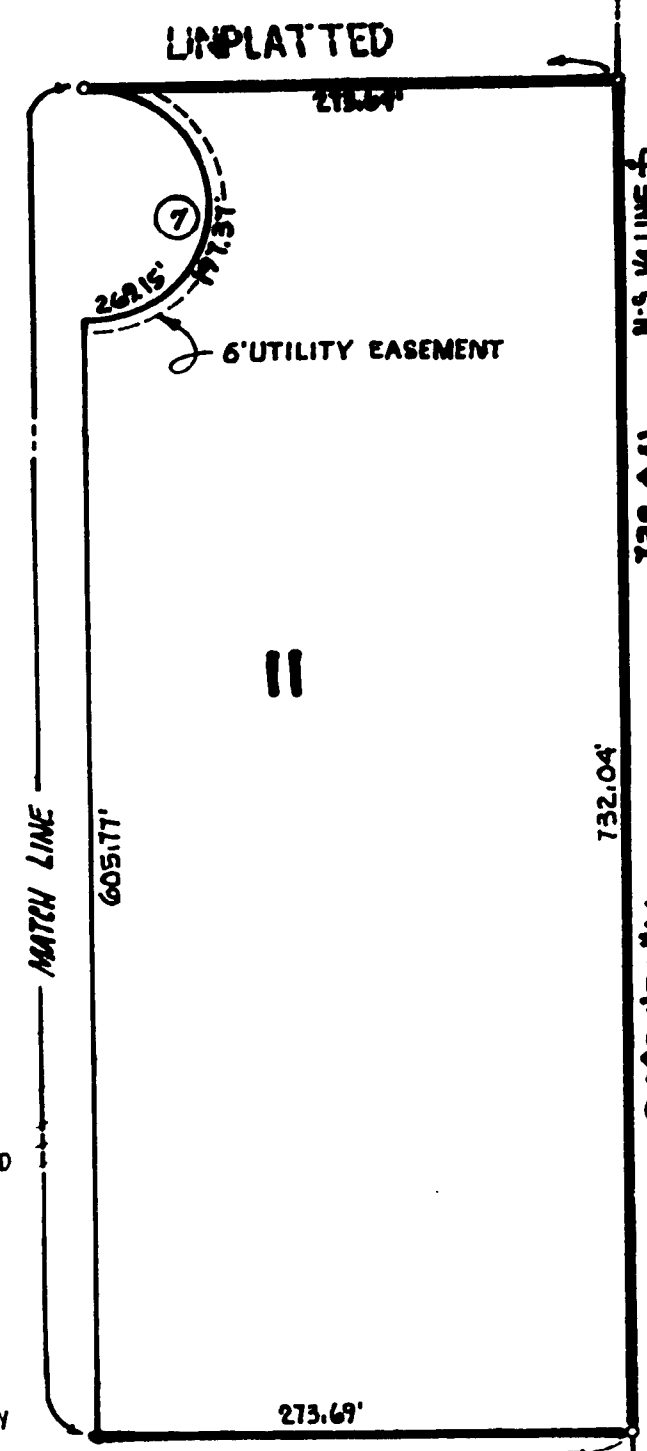


**CURVE DATA**

CURVE	RADIUS	ANGLE	TANGENT	ARC LENGTH	CHORD BEARING	DISTANCE
1	62.5'	41° 50' 11"	31.43'	67.45'	N59° 02' 20" E	64.23'
2	62.5'	242° 44' 31"	94.89'	269.15'	S33° 24' 50" E	104.39'
3	35'	66° 44' 31"	23.05'	40.71'	N56° 35' 10" E	38.50'
4	35'	90° 28' 10"	35.29'	55.26'	S44° 48' 29" E	49.70'
5	35'	89° 31' 50"	34.71'	54.69'	S45° 11' 31" W	49.29'
6	35'	66° 44' 31"	23.05'	40.71'	S56° 40' 19" E	38.50'
7	62.5'	242° 44' 31"	94.89'	269.15'	N33° 19' 42" E	104.39'



**LEGEND**  
 PLAT BEARINGS WERE ESTABLISHED BY THE EAST LINE OF SECTION 23, T7S R10W AS SHOWN ON WALL'S OMEGA LAKE SUBDIVISION, RECORDED IN LIBER 4 OF PLATS, PAGE 45. ALL DIMENSIONS ARE IN FEET. ALL CURVE DIMENSIONS ARE ARC DIMENSIONS. 4" CONCRETE MONUMENTS ARE AT ALL POINTS MARKED THUS: "o". ALL LOT CORNERS ARE MARKED BY AN 18" x 1/2" SOLID STEEL BAR.



# SAM FORD SUBDIVISION

## A SUBDIVISION SITUATED IN THE NORTH 1/2 OF THE NW 1/4 OF SECTION 27, T7S, R10W, SHERMAN TOWNSHIP, ST. JOSEPH COUNTY, MICHIGAN

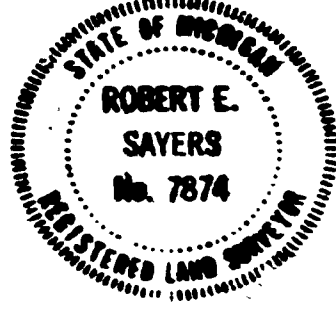
### SURVEYOR'S CERTIFICATE

I, ROBERT E. SAYERS, SURVEYOR, CERTIFY THAT I HAVE SURVEYED, DIVIDED AND MAPPED THE LAND SHOWN ON THIS PLAT, DESCRIBED AS FOLLOWS: SAM FORD SUBDIVISION, A SUBDIVISION SITUATED IN THE NORTH 1/2 OF THE NW 1/4 OF SECTION 27, T7S, R10W, SHERMAN TOWNSHIP, ST. JOSEPH COUNTY, MICHIGAN, IS DESCRIBED AS FOLLOWS:

COMMENCING AT THE NW CORNER OF SAID SECTION 27 AND RUNNING THENCE N89°57'26"E ALONG THE NORTH LINE OF SAID SECTION 1022.37 FEET TO THE POINT OF BEGINNING OF THIS SUBDIVISION; THE BOUNDARY RUNS THENCE N89°57'26"E ALONG SAID NORTH SECTION LINE 809.63 FEET, THENCE S0°25'36" W 600 FEET, THENCE N89°57'26"E 810 FEET, THENCE S0°25'36" W 732.04 FEET, THENCE N89°46'34" W 2189.59 FEET, THENCE N0°43'46"E 688.89 FEET, THENCE N89°57'26"E 214.72 FEET, THENCE NORTHEASTERLY ALONG A 62.5 FOOT RADIUS CURVE TO THE RIGHT AN ARC DISTANCE OF 67.45 FEET (SAID CURVE HAVING AN "I" ANGLE OF 6°50'11" AND BEING SUBTENDED BY A CHORD WHICH BEARS N59°02'20"E 64.23 FEET), THENCE N89°57'26"E 296.82 FEET, THENCE N0°25'36"E 600 FEET TO THE POINT OF BEGINNING OF THIS DESCRIPTION. THIS SUBDIVISION CONTAINS 11 NUMBERED LOTS, THAT I HAVE MADE SUCH SURVEY, LAND DIVISION AND PLAT BY THE DIRECTION OF THE OWNERS OF SUCH LAND, THAT SUCH PLAT IS A CORRECT REPRESENTATION OF ALL THE EXTERIOR BOUNDARIES OF THE LAND AND THE SUBDIVISION OF IT, THAT THE REQUIRED MONUMENTS AND LOT MARKERS HAVE BEEN LOCATED IN THE GROUND AS REQUIRED BY SECTION 125 OF THE ACT, THAT THE ACCURACY OF THE SURVEY IS WITHIN THE LIMITS REQUIRED BY SECTION 126 OF THE ACT, THAT THE BEARINGS SHOWN ON THE PLAT ARE EXPRESSED AS REQUIRED BY SECTION 126 (3) OF THE ACT AND AS EXPLAINED IN THE LEGEND.

*Robert E. Sayers*  
 ROBERT E. SAYERS R.L.S. # 7874  
 P.O. BOX 212, STURGIS, MICH. 49091

8/26/74  
 DATE



### RESTRICTION CERTIFICATE

THIS PLAT IS SUBJECT TO RESTRICTIONS REQUIRED BY ACT 288 P.A. 1967 AS AMENDED ON CERTAIN LOTS WITH RESPECT TO THE MICHIGAN DEPARTMENT OF PUBLIC HEALTH WHICH WHICH ARE RECORDED IN LIBER 392 OF DEEDS ON PAGES 67 OF RECORDS IN THIS COUNTY.

### COUNTY TREASURERS CERTIFICATE

RECORDS IN MY OFFICE SHOW NO UNPAID TAXES OR SPECIAL ASSESSMENTS FOR THE FIVE YEARS PRECEDING AUG. 28, 1974, INVOLVING THE LANDS IN THIS PLAT.

*Stanley M. Huff*  
 STANLEY M. HUFF, ST. JOSEPH COUNTY TREASURER

### COUNTY DRAIN COMMISSIONERS CERTIFICATE

APPROVED ON SEPT. 10, 1974, AS COMPLYING WITH SECTION 192 OF ACT 288, P.A. 1967 AND THE APPLICABLE PUBLISHED RULES AND REGULATIONS OF MY OFFICE IN THE COUNTY OF ST. JOSEPH.

*Lloyd S. Cupp*  
 LLOYD S. CUPP, DRAIN COMMISSIONER

### CERTIFICATE OF COUNTY ROAD COMMISSIONERS

APPROVED ON JUNE 12, 1975 AS COMPLYING WITH SECTION 183 OF ACT 288, P.A. 1967 AND THE APPLICABLE PUBLISHED RULES AND REGULATION OF THE BOARD OF ROAD COMMISSIONERS OF ST. JOSEPH COUNTY.

*Carl L. Roberts*  
 CARL L. ROBERTS, CHAIRMAN

*Frank Shellenbarger*  
 FRANK SHELLENBARGER, MEMBER

*D.W. Arney*  
 D.W. ARNEY, MEMBER

### CERTIFICATE OF MUNICIPAL APPROVAL

I CERTIFY THAT THIS PLAT WAS APPROVED BY THE TOWNSHIP BOARD, OF THE TOWNSHIP OF SHERMAN, AT A MEETING HELD JUNE 17, 1975, AND WAS REVIEWED AND FOUND TO BE IN COMPLIANCE WITH ACT 288, P.A. 1967. THIS PLAT WAS APPROVED ON AUG. 1, 1974, BY THE ST. JOSEPH COUNTY HEALTH DEPARTMENT.

*Richard A. Wenzel*  
 RICHARD A. WENZEL, TOWNSHIP CLERK

### PROPRIETOR'S CERTIFICATE... INDIVIDUALS

WE AS PROPRIETORS CERTIFY THAT WE HAVE CAUSED THE LAND EMBRACED IN THIS PLAT TO BE SURVEYED, DIVIDED, MAPPED AND DEDICATED AS REPRESENTED ON THIS PLAT AND THAT THAT PORTION OF MINTDALE ROAD, FORD ROAD AND KIMBERLY ROAD WHICH FALL WITHIN THE BOUNDARY OF SAID PLAT ARE FOR THE USE OF THE PUBLIC; THAT THE PUBLIC UTILITY EASEMENTS ARE PRIVATE EASEMENTS AND THAT ALL OTHER EASEMENTS ARE FOR THE USES SHOWN ON THE PLAT.

*Samuel S. Ford*  
 SAMUEL S. FORD  
 R.F.D. 3  
 STURGIS, MICHIGAN 49091

*Chester L. Barnell*  
 CHESTER L. BARNELL  
 R.F.D. 3  
 STURGIS, MICHIGAN 49091

*Robert E. Sayers*  
 ROBERT E. SAYERS, WITNESS

*Linda J. Ford*  
 LINDA J. FORD  
 R.F.D. 3  
 STURGIS, MICHIGAN 49091

*Betty L. Barnell*  
 BETTY L. BARNELL  
 R.F.D. 3  
 STURGIS, MICHIGAN 49091

*Jean L. Sayers*  
 JEAN L. SAYERS, WITNESS

### ACKNOWLEDGEMENT

STATE OF MICHIGAN S.S.  
 COUNTY OF ST. JOSEPH

PERSONALLY CAME BEFORE ME THIS 27<sup>th</sup> DAY OF August, 1974 THE ABOVE NAMED SAMUEL S. FORD AND LINDA J. FORD HIS WIFE, AND CHESTER L. BARNELL AND BETTY L. BARNELL HIS WIFE, TO ME KNOWN TO BE THE PERSONS WHO EXECUTED THE FORGOING INSTRUMENT AND ACKNOWLEDGE THAT THEY EXECUTED THE SAME AS THEIR FREE ACT AND DEED.

NOTARY PUBLIC *Jean L. Sayers* St. Joseph County, Michigan  
 JEAN L. SAYERS, ST. JOSEPH  
 MY COMMISSION EXPIRES MAY 29, 1976

### COUNTY PLAT BOARD CERTIFICATE

THIS PLAT HAS BEEN REVIEWED AND IS APPROVED BY THE ST. JOSEPH COUNTY PLAT BOARD ON June 20 1975 AS BEING IN COMPLIANCE WITH ALL OF THE PROVISIONS OF ACT 288, P.A. 1967 AND THE PLAT BOARD'S APPLICABLE RULES AND REGULATIONS.

*Donna E. Donmyer*  
 DONNA E. DONMYER, REGISTER OF DEEDS

*Stanley M. Huff*  
 STANLEY M. HUFF, COUNTY TREASURER

*Beverly J. Burnham*  
 BEVERLY J. BURNHAM, COUNTY CLERK

### RECORDING CERTIFICATE

REGISTER OF DEEDS OFFICE 55  
 COUNTY OF ST. JOSEPH

THIS PLAT OF SAM FORD SUBDIVISION WAS RECORDED 17<sup>th</sup> DAY OF July 1975 AT 12:02 P.M. IN LIBER 5 OF PLATS ON PAGES 20 & 21

*Donna E. Donmyer*  
 DONNA E. DONMYER, REGISTER OF DEEDS

EXAMINED AND APPROVED  
 Date *July 19, 1975*

*Richard E. Loman*  
 RICHARD E. LOMAN, STATE TREASURER