

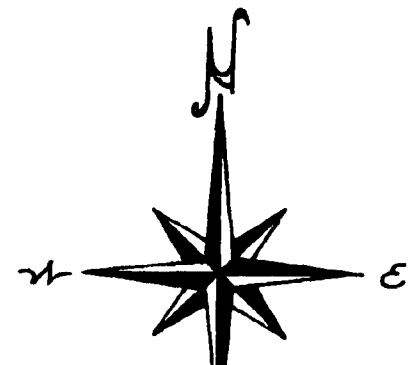
# RIVER FOREST SUBDIVISION NO. 2

A SUBDIVISION SITUATED IN THE NW 1/4 OF SEC. 31, T 5 S, R 11 W, PARK TWP,  
ST. JOSEPH CO., MICH.

ORIGINAL

NORTH 1/4 CORNER  
SEC. 31, T 5 S, R 11 W,  
MICH.

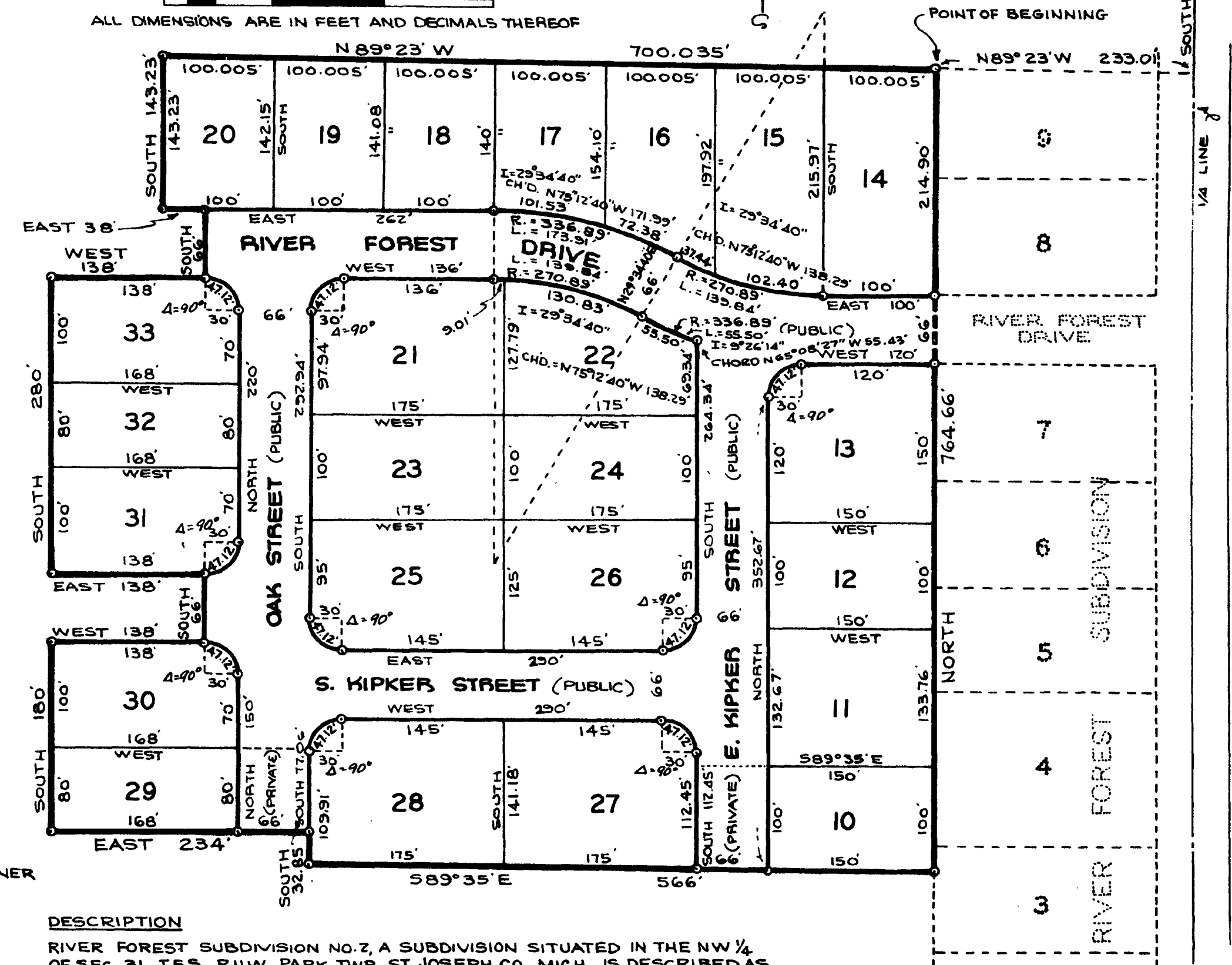
ALL CURVE DIMENSIONS  
ARE ARC DIMENSIONS.  
ALL ADJACENT LANDS ARE  
UNPLATTED UNLESS OTHER-  
WISE NOTED.



SCALE: 1" = 100'

0 25 50 100 200 300

ALL DIMENSIONS ARE IN FEET AND DECIMALS THEREOF



**DEDICATION**

KNOW ALL MEN BY THESE PRESENTS THAT WE, DAVID A. BONTRAGER AND AMY MAE BONTRAGER, HUSBAND AND WIFE, ROBERT E. KIPKER AND ELIZABETH KIPKER, HUSBAND AND WIFE, JAMES W. KIPKER AND MARIAN L. KIPKER, HUSBAND AND WIFE, ELWIN RUPERT, CHARLOTTE H. RUPERT, AND GEORGE EDWIN RUPERT, AS JOINT TENANTS, ALL AS PROPRIETORS, AND THE FIRST NATIONAL BANK OF THREE RIVERS MICHIGAN, A MICHIGAN CORPORATION, BY DONALD J. SMALLCOMBE, PRESIDENT, AND WALTER A. HUFFMAN, VICE PRESIDENT, AS MORTGAGEE, AND THE THREE RIVERS SAVINGS AND LOAN ASSOC. OF THREE RIVERS MICHIGAN, A MICHIGAN CORPORATION, BY J.B. MIKEL, PRESIDENT AND L.S. DOOLEY, SECRETARY, AS MORTGAGEE, AND THE MICHIGAN NATIONAL BANK OF BATTLE CREEK MICHIGAN, A MICHIGAN CORPORATION, BY CLARE R. BURK, VICE PRESIDENT AND ALBERT BRUGH, ASSISTANT VICE PRESIDENT, AS MORTGAGEE, HAVE CAUSED THE LAND EMBRACED IN THE ANNEXED PLAT TO BE SURVEYED, LAID OUT AND PLATTED TO BE KNOWN AS RIVER FOREST SUBDIVISION NO. 2, A SUBDIVISION SITUATED IN THE NW 1/4 OF SEC. 31, T 5 S, R 11 W, PARK TWP., ST. JOSEPH CO., MICH., AND THAT THE ROADS SHOWN ON SAID PLAT ARE HEREBY DEDICATED TO THE USE OF THE PUBLIC WITH THE EXCEPTION OF THAT PORTION OF OAK AND E. KIPKER STS WHICH LIE ADJACENT TO LOTS 10 AND 29 ARE DEDICATED TO THE USE OF OWNERS OF LANDS LYING IN THE NW 1/4 OF SAID SEC. 31.

**TAX CERTIFICATE**

OFFICE OF COUNTY TREASURER, ST. JOSEPH COUNTY I HEREBY CERTIFY THAT THERE ARE NO TAX LIENS OR TITLES HELD BY THE STATE ON THE LAND DESCRIBED HEREON, AND THAT THERE ARE NO TAX LIENS OR TITLES HELD BY INDIVIDUALS ON THE SAID LANDS FOR THE FIVE YEARS PRECEDING THE 1st DAY OF Dec. 1967, AND THAT THE TAXES FOR SAID PERIOD OF FIVE YEARS ARE FULLY PAID AS SHOWN BY THE RECORDS OF THIS OFFICE. THIS CERTIFICATE DOES NOT APPLY TO TAXES, IF ANY, NOW IN THE PROCESS OF COLLECTION BY TOWNSHIP, VILLAGE, OR CITY COLLECTING OFFICERS.

*Richard K. Olin*  
RICHARD K. OLIN, COUNTY TREASURER

**CERTIFICATE OF APPROVAL BY COUNTY ROAD COMMISSION**

THIS PLAT HAS BEEN EXAMINED AND WAS APPROVED ON THE 7th DAY OF DECEMBER, 1967, BY THE ST. JOSEPH COUNTY BOARD OF ROAD COMMISSIONERS.

*Frank Shellenbarger*  
FRANK SHELLENBARGER, MEMBER  
*D.W. Arney*  
D.W. ARNEY, CHAIRMAN  
*Carl L. Roberts*  
CARL L. ROBERTS, MEMBER

**CERTIFICATE OF MUNICIPAL APPROVAL**

THIS PLAT WAS APPROVED BY THE TOWNSHIP BOARD OF THE TOWNSHIP OF PARK AT A MEETING HELD Dec 6, 1967, AND IS IN COMPLIANCE WITH SECTION 19 AND THAT THE WIDTH OF LOTS CONFORMS WITH REQUIREMENTS OF SECTION 30, ACT 172, OF 1929, AS AMENDED.

*Lowell B. Frost*  
LOWELL B. FROST  
TOWNSHIP CLERK

**CERTIFICATE OF APPROVAL BY COUNTY PLAT BOARD**

THIS PLAT WAS APPROVED BY THE ST. JOSEPH COUNTY PLAT BOARD AT A MEETING HELD Dec 12th, 1967.

*Donna E. Donmyer*  
DONNA E. DONMYER, REGISTER OF DEEDS  
*Richard K. Olin*  
RICHARD K. OLIN, COUNTY TREASURER  
*John W. Marvin*  
JOHN W. MARVIN, COUNTY CLERK  
*Ruel N. Beebe*  
RUEL N. BEEBE, DRAIN COMMISSIONER

**SURVEYOR'S CERTIFICATE**

I HEREBY CERTIFY THAT THE PLAT HEREON DELINEATED IS A CORRECT ONE AND THAT PERMANENT METAL MONUMENTS CONSISTING OF BARS NOT LESS THAN ONE-HALF INCH IN DIAMETER AND 36 INCHES IN LENGTH, ENCASED IN A CONCRETE CYLINDER AT LEAST 4 INCHES IN DIAMETER AND 36 INCHES IN DEPTH, HAVE BEEN PLACED AT ALL POINTS MARKED THUS: (O) AS THEREON SHOWN AT ALL ANGLES IN THE BOUNDARY OF THE LAND PLATTED, AT ALL THE INTERSECTIONS OF STREETS, AND AT THE INTERSECTIONS OF STREETS WITH THE BOUNDARY OF THE PLAT AS SHOWN ON SAID PLAT, PREPARED AND DRAFTED BY ROBERT E. SAYERS.

ROBERT E. SAYERS, REGISTERED LAND SURVEYOR \*7874  
N. M-78 & WAIT ROAD, P.O. BOX 212  
STURGIS, MICH.

**DESCRIPTION**

RIVER FOREST SUBDIVISION NO. 2, A SUBDIVISION SITUATED IN THE NW 1/4 OF SEC. 31, T 5 S, R 11 W, PARK TWP., ST. JOSEPH CO., MICH., IS DESCRIBED AS FOLLOWS: COMMENCING AT THE NORTH 1/4 CORNER OF SAID SECTION 31 AND RUNNING THENCE SOUTH ALONG THE 1/4 LINE 1051.60 FEET, THENCE N89°23' W 700.035 FEET TO THE POINT OF BEGINNING; THENCE N89°23' W 143.23 FEET, THENCE SOUTH 143.23 FEET, THENCE EAST 38 FEET, THENCE SOUTH 66 FEET, THENCE WEST 138 FEET, THENCE SOUTH 280 FEET, THENCE EAST 138 FEET, THENCE SOUTH 66 FEET, THENCE WEST 138 FEET, THENCE SOUTH 180 FEET, THENCE EAST 234 FEET, THENCE SOUTH 32.85 FEET, THENCE S89°35' E 566 FEET, THENCE NORTH 764.66 FEET TO THE POINT OF BEGINNING. THIS SUBDIVISION CONTAINS 24 NUMBERED LOTS.

*David A. Bontrager*  
DAVID A. BONTRAGER, RT. #1, MIDDLEBURY, INDIANA  
*Amy Mae Bontrager*  
AMY MAE BONTRAGER, RT. #1, MIDDLEBURY, INDIANA  
*Robert E. Kipker*  
ROBERT E. KIPKER, WILBUR ROAD, RT. #2, THREE RIVERS, MICHIGAN  
*Elizabeth Kipker*  
ELIZABETH KIPKER, WILBUR ROAD, RT. #2, THREE RIVERS, MICHIGAN  
*James W. Kipker*  
JAMES W. KIPKER, RT. #2, THREE RIVERS, MICHIGAN  
*Marian L. Kipker*  
MARIAN L. KIPKER, RT. #2, THREE RIVERS, MICHIGAN  
*Elwin Rupert*  
ELWIN RUPERT, RT. #2, THREE RIVERS, MICHIGAN  
*Charlotte H. Rupert*  
CHARLOTTE H. RUPERT, RT. #2, THREE RIVERS, MICHIGAN  
*George Edwin Rupert*  
GEORGE EDWIN RUPERT, RT. #2, THREE RIVERS, MICHIGAN  
*Walter A. Huffman*  
WALTER A. HUFFMAN, VICE PRESIDENT  
*Donald J. Smallcombe*  
DONALD J. SMALLCOMBE, PRESIDENT  
*J.B. Mikel*  
J.B. MIKEL, PRESIDENT  
*L.S. Dooley*  
L.S. DOOLEY, SECRETARY  
*Clare R. Burk*  
CLARE R. BURK, VICE PRESIDENT  
*Albert Brugh*  
ALBERT BRUGH, ASST. VICE PRESIDENT  
*Robert E. Sayers*  
ROBERT E. SAYERS, WITNESS  
*Jan L. Sayers*  
JAN L. SAYERS, WITNESS

EXAMINED AND APPROVED  
Date: **JAN 7 6 1968**

*Allison Green*  
ALLISON GREEN  
STATE TREASURER  
By *Richard E. Lomax*  
Richard E. Lomax - Plat Examiner

STATE OF MICHIGAN COUNTY OF ST. JOSEPH ss ON THIS 7th DAY OF December 1967 DID APPEAR BEFORE ME, A NOTARY PUBLIC IN AND FOR SAID COUNTY, DAVID A. BONTRAGER AND AMY MAE BONTRAGER, HUSBAND AND WIFE, ROBERT E. KIPKER AND ELIZABETH KIPKER, HUSBAND AND WIFE, ELWIN RUPERT AND GEORGE EDWIN RUPERT, AS JOINT TENANTS, ALL AS PROPRIETORS, PERSONALLY KNOWN BY ME TO BE THE PERSONS WHO EXECUTED THE ABOVE DEDICATION AND ACKNOWLEDGED THE SAME TO BE THEIR OWN FREE ACT AND DEED. ALSO BEFORE ME ON THIS DAY DID APPEAR DONALD J. SMALLCOMBE, PRESIDENT, AND WALTER A. HUFFMAN, VICE PRESIDENT OF THE FIRST NATIONAL BANK OF THREE RIVERS, A MICHIGAN CORPORATION, AND J.B. MIKEL AND L.S. DOOLEY, PRESIDENT AND SECRETARY, RESPECTIVELY, OF THE THREE RIVERS SAVINGS AND LOAN ASSOC., A MICHIGAN CORPORATION, AND CLARE R. BURK AND ALBERT BRUGH, VICE PRESIDENT AND ASSISTANT VICE PRESIDENT, RESPECTIVELY, OF THE MICHIGAN NATIONAL BANK OF BATTLE CREEK, A MICHIGAN CORPORATION, AND THAT THE SEALS AFFIXED ARE THE CORPORATE SEALS OF SAID CORPORATIONS AND SAID INSTRUMENT WAS SIGNED AND SEALED IN BEHALF OF SAID CORPORATIONS BY AUTHORITY OF THEIR RESPECTIVE BOARDS OF DIRECTORS AND THE SAID DONALD J. SMALLCOMBE, WALTER A. HUFFMAN, J.B. MIKEL, L.S. DOOLEY, CLARE R. BURK AND ALBERT BRUGH ACKNOWLEDGED SAID INSTRUMENT TO BE THE FREE ACT AND DEED OF SAID CORPORATIONS.

*Jan L. Sayers*  
JAN L. SAYERS, NOTARY PUBLIC, ST. JOSEPH COUNTY, MICH. MY COMMISSION EXPIRES: MAY 27, 1968