

EXAMINED AND APPROVED

Date JUN 1 1955

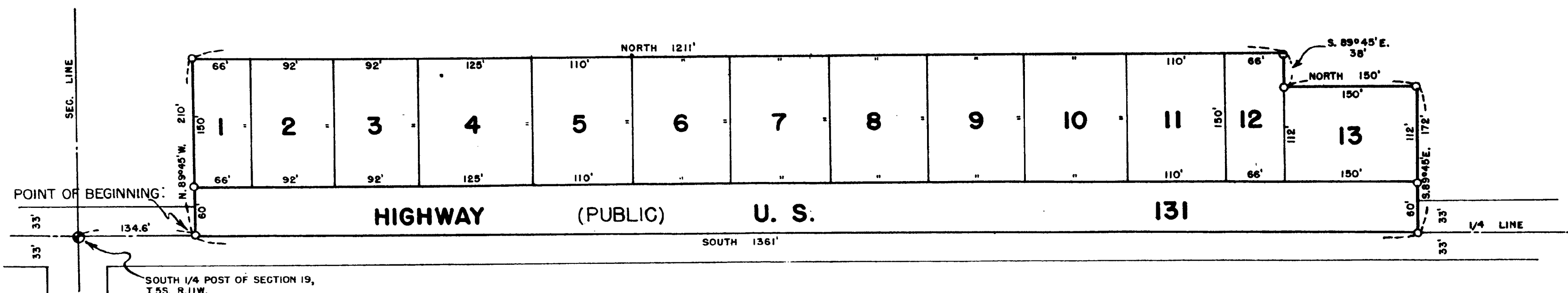
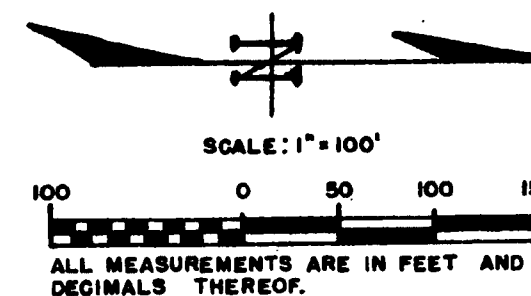
Victor Targowski

Victor Targowski,
AUDITOR GENERAL

By *D. J. MacKey*
Plat Engineer

PLANTATION GROVE

A SUBDIVISION IN THE S. W. 1/4 OF SEC. 19, T.5S., R.11W.,
PARK TOWNSHIP, ST. JOSEPH COUNTY, MICHIGAN.



MUNICIPAL APPROVAL
This plat was approved by the Township Board of the Township of Park at a meeting held March 22, 1955.
A. L. Peel (Clerk)

CERTIFICATE AS TO STATE TRUNK LINE OR FEDERAL AID ROADS
We hereby certify that said plat appears to include land located on a state trunk line or federal aid road.

Donna E. Donmyer
DONNA E. DONMYER, (County Register of Deeds)
John W. Marvin
JOHN W. MARVIN, (County Clerk)
Irene Hibbard
IRENE HIBBARD, (County Treasurer)
Richard K. Olin
RICHARD K. OLIN, (County Drain Commissioner)

APPROVAL BY BOARD OF COUNTY ROAD COMMISSIONERS

This plat has been examined and was approved on the 14th day of April, 1955 by the St. Joseph County Board of Road Commissioners.
Paul L. Ahlgrim (Chairman)
Ivan Bent (Member)
Noyes T. Percy (Member)

DESCRIPTION OF LAND PLATTED
The land embraced in the annexed plat of "Plantation Grove" a subdivision in the Southwest 1/4 of Section 19, T.5 S., R.11 W., Park Township, St. Joseph County, Michigan is described as follows: Beginning at a point on the North and South quarter line 134.6 feet North of the South quarter post of said Section 19 and running thence North 89 degrees 45 minutes West 210 feet; thence North 1211 feet; thence South 89 degrees 45 minutes East 38 feet; thence North 150 feet; thence South 89 degrees 45 minutes East 172 feet; thence South 1361 feet to beginning. THIS SUBDIVISION CONTAINS 13 LOTS.

APPROVAL BY COUNTY PLAT BOARD

This plat was approved on the 7th day of May, 1955 by the St. Joseph County Plat Board

Donna E. Donmyer
DONNA E. DONMYER, (County Register of Deeds)
John W. Marvin
JOHN W. MARVIN, (County Clerk)
Irene Hibbard
IRENE HIBBARD, (County Treasurer)
Richard K. Olin
RICHARD K. OLIN, (County Drain Commissioner)

COUNTY TREASURER'S CERTIFICATE

Office of County Treasurer, St. Joseph County. I hereby certify, that there are no tax liens or titles held by the State on the lands described hereon, and that there are no tax liens or titles held by individuals on said lands, for the five years preceding the 2nd day of May, 1955 and that the taxes for said period of five years are all paid as shown by the records of this office. This certificate does not apply to taxes, if any, now in process of collection by township, city or village collecting officers.
Irene Hibbard
IRENE HIBBARD, (County Treasurer)

APPROVED
Charles M. Ziegler
CHARLES M. ZIEGLER
STATE HIGHWAY COMMISSIONER

DEDICATION
KNOW ALL MEN BY THESE PRESENTS, that we, Joseph M. Wilbur, a single man, as proprietors have caused the land embraced in the annexed plat to be surveyed, laid out and platted, to be known as "Plantation Grove" a subdivision in the Southwest 1/4 of Section 19, T.5 S., R.11 W., Park Township, St. Joseph County, Michigan, and that the Highway as shown on said plat is hereby dedicated to the use of the public.

Signed and Sealed in the Presence of:
Joseph M. Wilbur
Joseph M. Wilbur
Margaret J. White
Margaret J. White
HELEN E. BLACK
HELEN E. BLACK

ACKNOWLEDGMENT

STATE OF MICHIGAN
County of St. Joseph ss.
On this 7th day of May, 1955, before me, a Notary Public in and for said County, personally came the above named JOSEPH M. WILBUR, a single man, as proprietor

known to me to be the persons who executed the above dedication, and acknowledged the same to be their free act and deed.
George D. Bradford
George D. Bradford
Notary Public, St. Joseph County
My Commission expires 2/1/56

SURVEYOR'S CERTIFICATE

I hereby certify that the plat hereon delineated is a correct one and that permanent metal monuments consisting of bars not less than one-half inch in diameter and 48 inches in length, or shorter bars of not less than one-half inch in diameter lapped over each other at least 6 inches with an over-all length of not less than 48 inches, encased in a concrete cylinder at least 4 inches in diameter and 48 inches in depth have been placed at points marked thus (.....) as thereon shown at all angles in the boundaries of the land platted, at all the intersections of streets, intersections of alleys, or of streets and alleys, and at the intersections of streets and alleys with the boundaries of the plat as shown on said plat.
Earl H. James
Earl H. James
Registered Professional Engineer

REGISTER'S OFFICE,
COUNTY OF ST. JOSEPH,
STATE OF MICHIGAN
Received for Record, this 7th day of June, A. D. 1955 at 2:00 o'clock A.M., and recorded in Vol. 3 of Plats on Page 50
Donna E. Donmyer
Reg. Sec. of Reg.