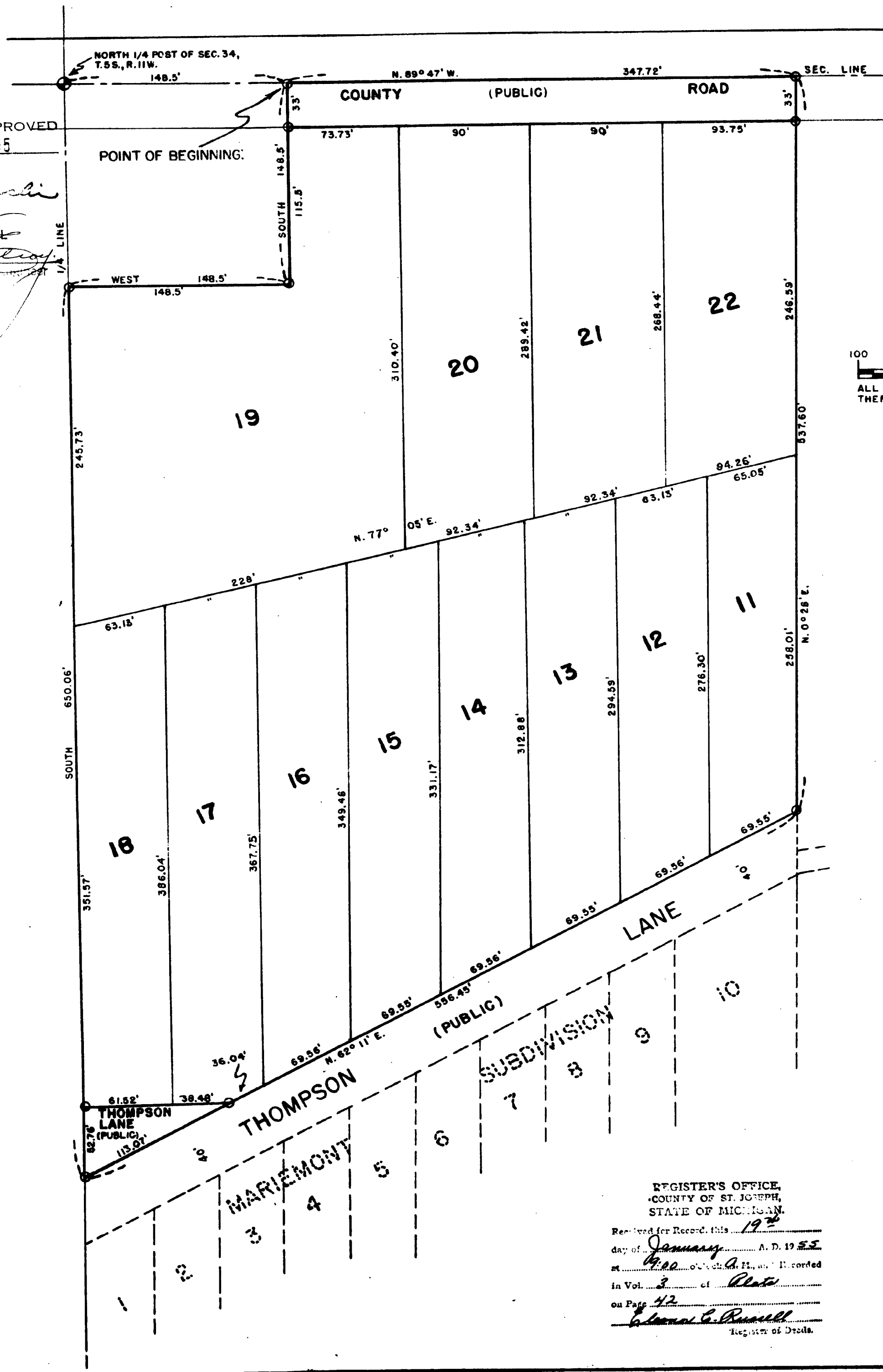
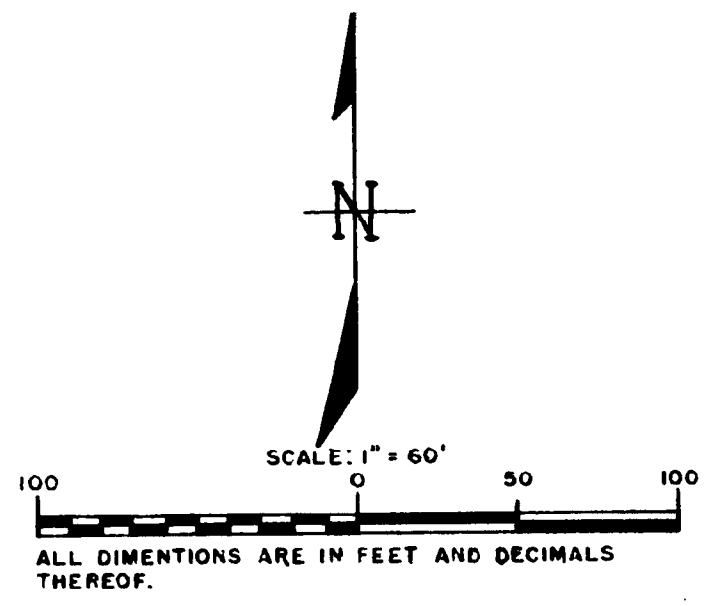


MARIEMONT NUMBER ONE

A SUBDIVISION IN THE NORTHEAST FRACTIONAL QUARTER OF SECTION 34,
TOWN 5 SOUTH, RANGE II WEST, PARK TOWNSHIP, ST. JOSEPH COUNTY,
MICHIGAN



EXAMINED AND APPROVED
Date JAN 1 1955
By *[Signature]*
REGISTER GENERAL



APPROVAL BY COUNTY PLAT BOARD
This plat was approved on the 14th day of January, 1955, by the St. Joseph County Plat Board
Eleanor C. Russell (County Register of Deeds)
John W. Marvin (County Clerk)
Irene Hibbard (County Treasurer)
Richard Olin (County Drain Commissioner)

MUNICIPAL APPROVAL
This plat was approved by the Township Board of the Township of Park at a meeting held January 12, 1955
A. L. Peel (Clerk)

APPROVAL BY BOARD OF COUNTY ROAD COMMISSIONERS
This plat has been examined and was approved on the 2nd day of December, 1954, by the St. Joseph County Board of Road Commissioners.
Ivan Bent (Chairman)
Paul L. Ahlgren (Member)
Walter T. Pegey (Member)

COUNTY TREASURER'S CERTIFICATE
Office of County Treasurer, St. Joseph County.
I hereby certify, that there are no tax liens or titles held by the State on the lands described hereon, and that there are no tax liens or titles held by individuals on said lands, for the five years preceding the 1st day of December, 1954 and that the taxes for said period of five years are all paid, as shown by the records of this office.
Irene Hibbard (County Treasurer)

REGISTER'S OFFICE,
COUNTY OF ST. JOSEPH,
STATE OF MICHIGAN.
Received for Record, this 19th day of January, A. D. 1955
at 9:00 o'clock A.M., and recorded in Vol. 3 of Plats on Page 42
Eleanor C. Russell
Register of Deeds.

DEDICATION
KNOW ALL MEN BY THESE PRESENTS, that we... Leslie B. Crabtree and Marie G. Crabtree, husband and wife, as proprietors, have caused the land embraced in the annexed plat to be surveyed, laid out and platted, to be known as "Mariemont Number One" a subdivision in the Northeast fractional quarter of Section 34, Town 5 South, Range 11 West, Park Township, St. Joseph County, Michigan, and that the roads known as County Road and Thompson Lane, as shown on said plat, are hereby dedicated to the use of the public.

Signed and Sealed in the Presence of:
Billie R. Stensgaard (Witness) *Leslie B. Crabtree*
Edward B. Frandsen (Witness) *Marie G. Crabtree* (L.S.)

ACKNOWLEDGMENT
STATE OF MICHIGAN ss.
County of St. Joseph
On this 7th day of December, 1954, before me, a Notary Public in and for said County, personally came the above named, Leslie B. Crabtree and Marie G. Crabtree, husband and wife, as proprietors,

known to me to be the persons who executed the above dedication, and acknowledged the same to be their free act and deed.
Elaine G. Kucera
Notary Public. My Commission expires Jan 1955

SURVEYOR'S CERTIFICATE
I hereby certify that the plat hereon delineated is a correct one and that permanent metal monuments consisting of bars not less than one-half inch in diameter and 48 inches in length, or shorter bars of not less than one-half inch in diameter lapped over each other at least 6 inches with an over-all length of not less than 48 inches, encased in a concrete cylinder at least 4 inches in diameter and 48 inches in depth have been placed at points marked thus (O) as thereon shown at all angles in the boundaries of the land platted, at all the intersections of streets, intersections of alleys, or of streets and alleys, and at the intersections of streets and alleys with the boundaries of the plat as shown on said plat.
Earl N. James Registered Professional Engineer

DESCRIPTION OF LAND PLATTED
The land embraced in the annexed plat of "Mariemont Number One" is a subdivision in the Northeast fractional quarter of Section 34, Town 5 South, Range 11 West, Park Township, St. Joseph County, Michigan, is described as follows: Beginning on the North Section line, 148.5 feet East of the North quarter post of said Section 34, and running thence South 148.5 feet; thence West 148.5 feet; thence South 650.06 feet; thence North 62 degrees 11 minutes East 556.45 feet; thence North 0 degrees 26 minutes East 537.60 feet; thence North 89 degrees 47 minutes West 547.72 feet to beginning.

See Liber 970 pg 939 Vacation Plat Col-de-Sac