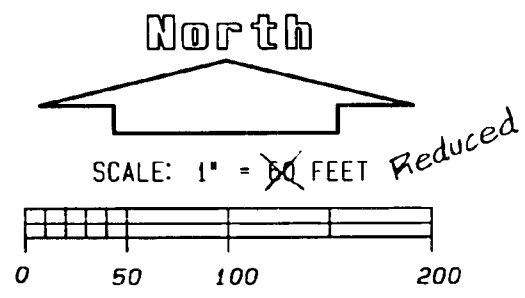
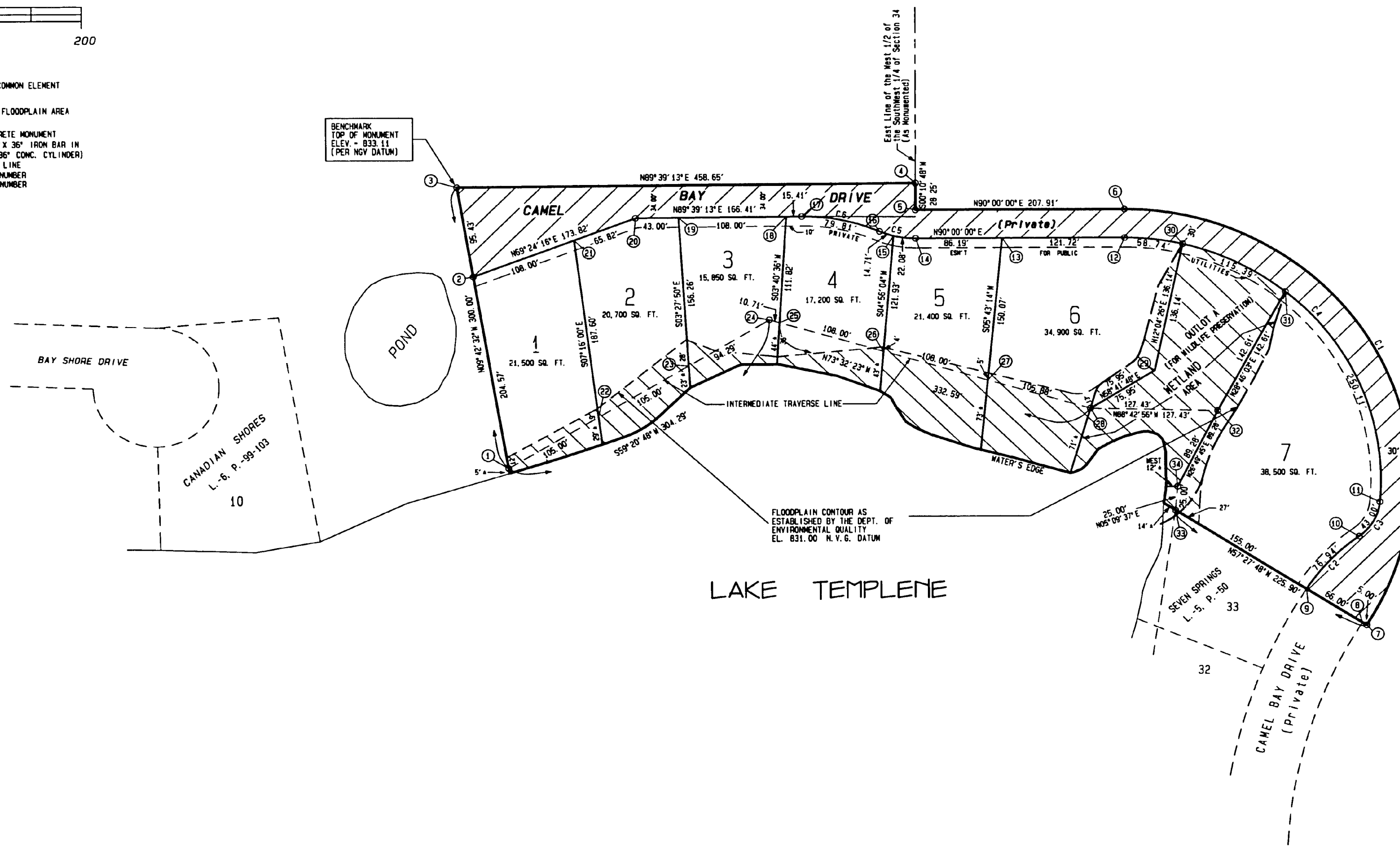


# SITE, UTILITY & FLOODPLAIN PLAN SEVEN SPRINGS SEVEN

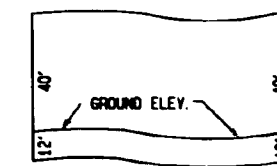
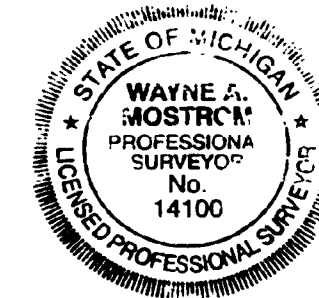


- GENERAL COMMON ELEMENT
- 100 YEAR FLOODPLAIN AREA
- CONCRETE MONUMENT  
(1 1/2" X 3/8" IRON BAR IN  
4" X 3/8" CONC. CYLINDER)
- (R) - RADIAL LINE
- C-2 - CURVE NUMBER
- (10) - POINT NUMBER



POINT	NORTH	EAST
1	6359.85	11106.48
2	6551.49	11071.98
3	6655.56	11055.89
4	6658.33	11514.53
5	6630.06	11514.44
6	6630.06	11722.37
7	6191.71	11962.56
8	6194.40	11958.34
9	6229.92	11902.71
10	6285.32	11955.43
11	6321.44	11976.25
12	6600.06	11722.95
13	6600.06	11600.63
14	6600.06	11514.44
15	6602.81	11452.58
16	6607.59	11478.69
17	6623.64	11401.10
18	6623.95	11389.69
19	6622.90	11277.99
20	6622.64	11234.70
21	6695.48	11173.08
22	6413.39	11196.81
23	6466.92	11287.14
24	6214.99	11368.25
25	6511.96	11378.52
26	6481.36	11482.10
27	6450.76	11565.57
28	6420.76	11687.22
29	6460.22	11752.11
30	6593.34	11780.59
31	6542.91	11883.25
32	6417.90	11814.62
33	6313.33	11772.07
34	6338.23	11774.32

Curve	Radius	Delta	Length	Tangent	Chord/Brg
C1	286.00'	122° 33' 24"	608.62'	520.10'	499.87' S28° 43' 16" E
C2	200.00'	22° 02' 32"	76.94'	38.95'	76.47' N43° 34' 35" E
C3	50.00'	49° 18' 38"	43.00'	22.93'	41.99' S29° 57' 32" W
C4	256.00'	95° 19' 12"	424.23'	279.85'	378.37' N42° 20' 22" W
C5	88.87'	23° 43' 20"	36.79'	18.66'	38.53' N78° 08' 15" W
C6	190.00'	24° 04' 07"	79.81'	40.50'	79.23' N78° 18' 43" W



NOTE: EACH UNIT SHALL HAVE ITS OWN UNIQUE PROFILE WITH LIMITS OF OWNERSHIP 12"-0" BELOW AND 40"-0" ABOVE GROUND ELEVATION

UNIT CROSS SECTION  
NO SCALE