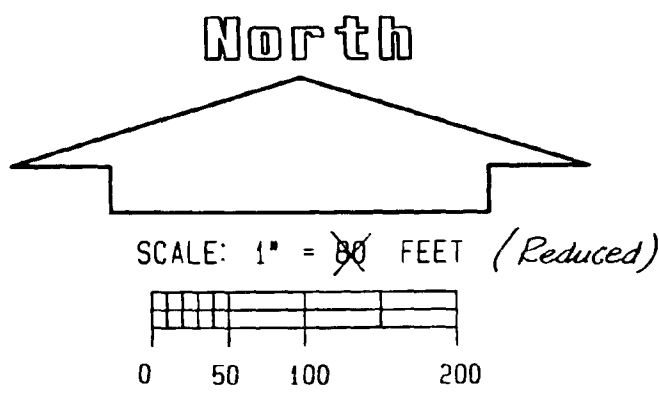


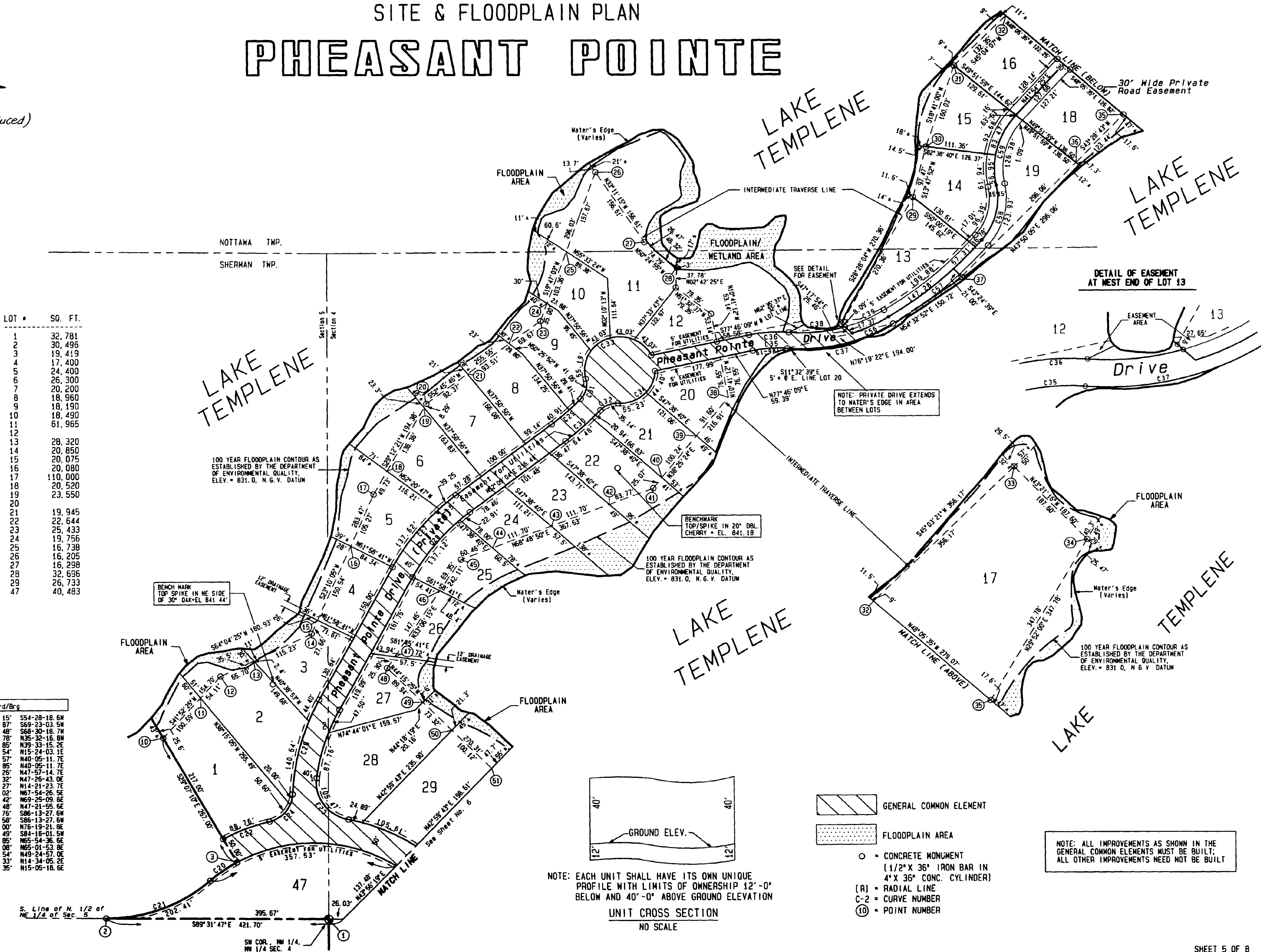
SITE & FLOODPLAIN PLAN PHEASANT POINTE



POINT	NORTH	EAST
1	145493.923	818126.971
2	145497.172	817731.318
3	145601.214	817964.657
10	145634.463	817834.728
11	145909.361	817901.868
12	145949.656	817937.889
13	145978.383	817997.081
14	146028.762	818100.710
15	146064.187	818111.590
16	146192.586	818170.817
17	146289.371	818212.235
18	146332.779	818236.501
19	146451.800	818303.035
20	146459.040	818307.083
21	146514.933	818380.619
22	146571.519	818455.068
23	146613.677	818510.535
24	146646.612	818522.382
25	146743.875	818557.369
26	146892.234	818610.735
27	146761.171	818696.459
28	146713.513	818754.099
29	146844.460	819174.888
30	146939.117	819198.134
31	147090.710	819249.396
32	147184.185	819343.097
33	147435.787	819595.190
34	147299.379	819723.979
35	146997.788	819550.789
36	146908.219	819465.854
37	146694.657	819260.809
38	146469.494	818944.065
39	146397.728	818787.137
40	146319.199	818724.843
41	146299.560	818709.265
42	146269.288	818631.161
43	146228.920	818527.011
44	146188.552	818422.861
45	146166.703	818366.491
46	146108.607	818328.613
47	145985.084	818248.076
48	145963.892	818234.259
49	145899.479	818297.023
50	145846.963	818348.195
51	145775.016	818417.836

LOT #	SQ. FT.
1	32,781
2	30,496
3	19,419
4	17,400
5	24,400
6	26,300
7	20,200
8	18,960
9	18,190
10	18,490
11	61,965
12	
13	28,320
14	20,850
15	20,075
16	20,080
17	110,000
18	20,520
19	23,550
20	
21	19,945
22	22,644
23	25,433
24	19,756
25	16,738
26	16,205
27	16,298
28	32,696
29	26,733
47	40,483

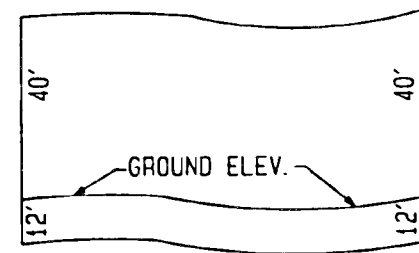
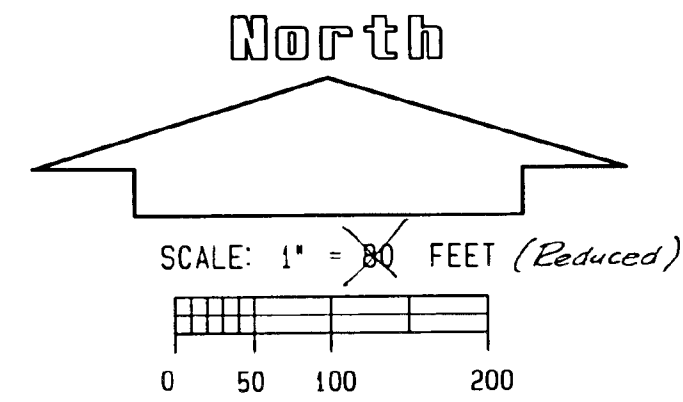
Curve #	Radius	Delta	Length	Tangent	Chord/Brg
C20	275.00'	12°20'50"	59.25'	29.75'	S54-28-18.6M
C21	275.00'	42°10'20"	202.41'	106.04'	S69-23-03.5M
C22	325.00'	15°38'50"	88.75'	44.65'	S68-30-18.7M
C23	70.00'	88°19'56"	105.47'	65.65'	N39-32-18.6M
C24	55.00'	73°32'57"	70.60'	41.11'	N39-32-15.2E
C25	420.00'	25°14'32"	185.04'	94.04'	N15-24-03.1E
C27	420.00'	24°07'45"	176.88'	89.77'	N40-05-11.7E
C28	360.00'	24°07'45"	160.03'	81.22'	N40-05-11.7E
C29	480.00'	8°23'39"	70.32'	35.22'	N47-57-14.7E
C30	520.00'	9°24'42"	85.42'	42.81'	N47-26-43.0E
C31	40.00'	58°48'03"	41.05'	22.54'	N14-21-23.7E
C32	40.00'	50°20'09"	35.14'	18.80'	N67-54-26.5E
C33	62.50'	168°55'35"	184.27'	64.74'	N69-25-09.6E
C34	62.50'	91°25'11"	99.72'	64.07'	N41-21-55.6E
C35	210.00'	16°54'38"	61.96'	31.22'	S86-13-27.6M
C36	240.00'	16°54'38"	70.83'	35.68'	S86-13-27.6M
C37	308.00'	36°42'50"	197.36'	102.20'	N75-19-21.8E
C38	278.00'	29°49'30"	101.04'	51.02'	S84-18-01.5M
C39	278.00'	15°53'19"	77.09'	38.80'	N65-54-36.6E
C56	293.00'	14°07'54"	72.27'	36.32'	N65-01-53.8E
C57	741.71'	17°06'00"	221.37'	111.51'	N49-24-57.0E
C58	120.00'	52°35'44"	110.15'	59.30'	N14-34-05.2E
C59	150.00'	53°38'11"	140.42'	75.83'	N15-05-18.6E



- GENERAL COMMON ELEMENT
 - FLOODPLAIN AREA
 - CONCRETE MONUMENT (1/2" X 36" IRON BAR IN 4" X 36" CONC. CYLINDER)
 - RADIAL LINE
 - CURVE NUMBER
 - POINT NUMBER
- NOTE: ALL IMPROVEMENTS AS SHOWN IN THE GENERAL COMMON ELEMENTS MUST BE BUILT; ALL OTHER IMPROVEMENTS NEED NOT BE BUILT

SITE & FLOODPLAIN PLAN

PHEASANT POINTE



NOTE: EACH UNIT SHALL HAVE ITS OWN UNIQUE PROFILE WITH LIMITS OF OWNERSHIP 12'-0" BELOW AND 40'-0" ABOVE GROUND ELEVATION

UNIT CROSS SECTION
NO SCALE

- GENERAL COMMON ELEMENT
- FLOODPLAIN AREA
- CONCRETE MONUMENT (1/2" X 36" IRON BAR IN 4" X 36" CONC. CYLINDER)
- RADIAL LINE
- CURVE NUMBER
- POINT NUMBER

NOTE: ALL IMPROVEMENTS AS SHOWN IN THE GENERAL COMMON ELEMENTS MUST BE BUILT; ALL OTHER IMPROVEMENTS NEED NOT BE BUILT

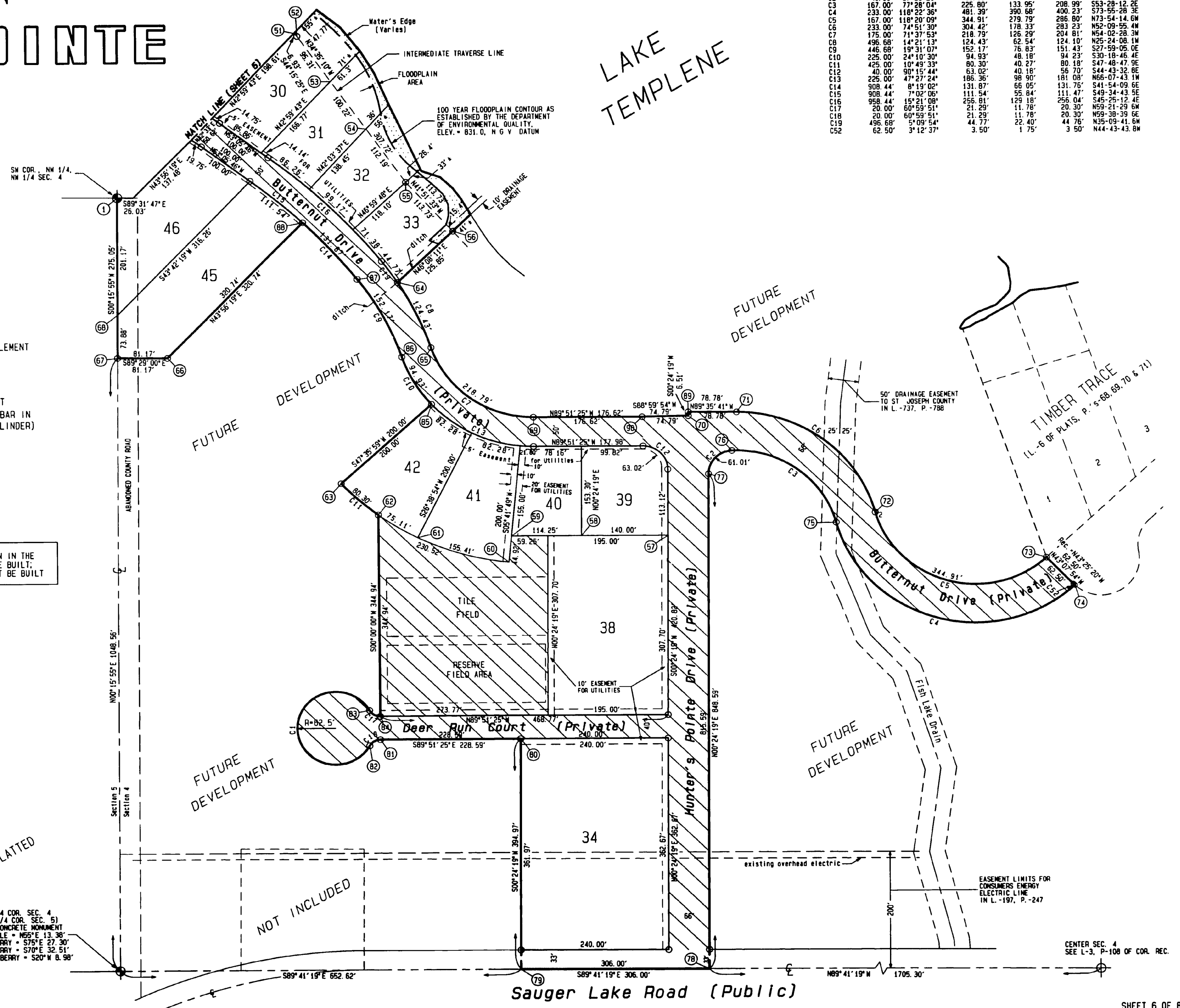
POINT	NORTH	EAST
51	145775.259	818417.063
52	145770.299	818422.896
53	145691.830	818476.999
54	145608.325	818533.886
55	145516.961	818597.571
56	145432.256	818673.464
57	144908.839	819018.705
58	144909.188	818878.706
59	144909.473	818764.458
60	144864.779	818759.999
61	144907.825	818611.570
62	144947.253	818547.759
63	145001.100	818488.346
64	145345.052	818582.730
65	145232.948	818635.967
66	145218.144	818206.866
67	145218.876	818125.697
68	145292.753	818126.039
69	145112.681	818801.751
70	145113.547	819053.155
71	145119.495	819131.981
72	144945.769	819355.668
73	144866.256	819631.222
74	144818.153	819676.414
75	144928.981	819291.839
76	145053.378	819123.910
77	145013.690	819085.449
78	144165.121	819079.445
79	144166.784	818773.449
80	144561.743	818776.243
81	144562.314	818547.659
82	144552.054	818530.141
83	144612.660	818530.293
84	144602.313	818547.759
85	145135.961	818636.036
86	145217.310	818588.475
87	145309.643	818545.888
88	145449.101	818429.421
89	145120.053	819053.201
90	145112.240	818978.373

LOT	SQ. FT.
30	24,850
31	21,359
32	18,298
33	18,884
34	86,957
38	31,677
39	21,115
40	16,433
41	23,769
42	23,769
45	38,259
46	29,693

UNPLATTED

NOT INCLUDED

WEST 1/4 COR. SEC. 4
(EAST 1/4 COR. SEC. 5)
FOUND CONCRETE MONUMENT
14" MAPLE = N65°E 13' 30"
16" CHERRY = S75°E 27' 30"
12" CHERRY = S70°E 32' 51"
12" MULBERRY = S20°W 8' 98"



Curve	Radius	Delta	Length	Tangent	Chord/Brg
C1	62.50'	301°58'42"	329.43'	00'	60.61' S00-08-35.0W
C2	40.00'	87°23'26"	61.01'	38.22'	55.27' N44-06-02.6E
C3	167.00'	77°28'04"	225.80'	133.95'	208.99' S53-28-12.2E
C4	233.00'	118°22'36"	481.39'	390.68'	400.23' S73-55-28.3E
C5	167.00'	118°20'09"	344.91'	275.79'	286.80' N73-54-14.6W
C6	233.00'	74°51'30"	304.42'	178.33'	283.23' N52-09-55.4W
C7	175.00'	71°37'53"	218.79'	126.29'	204.81' N54-02-28.3W
C8	496.68'	14°21'13"	124.43'	62.54'	124.10' N25-24-08.1W
C9	446.68'	19°31'07"	152.17'	78.83'	151.43' S27-59-05.0E
C10	225.00'	24°10'30"	94.93'	48.18'	94.23' S30-10-46.4E
C11	425.00'	10°49'33"	80.30'	40.27'	80.18' S47-48-47.9E
C12	40.00'	90°15'44"	63.02'	40.16'	56.70' S44-43-32.8E
C13	225.00'	47°27'24"	186.36'	98.90'	181.08' N66-07-43.1W
C14	908.44'	8°19'02"	131.87'	66.05'	131.76' S41-54-09.6E
C15	908.44'	7°02'06"	111.54'	55.84'	111.47' S49-34-43.5E
C16	958.44'	15°21'08"	256.81'	129.18'	256.04' S45-25-12.4E
C17	20.00'	60°59'51"	21.29'	11.78'	20.30' N59-21-29.6W
C18	20.00'	60°59'51"	21.29'	11.78'	20.30' N59-39-39.6E
C19	436.68'	5°09'54"	44.77'	22.40'	44.78' N35-09-41.6W
C52	62.50'	3°12'37"	3.50'	1.75'	3.50' N44-43-43.8W