

Boundaries.

The Village of Wasepi comprises parcels of land in Sections 15 and 22 in T. 6 S., R. 10 W. (Township of Nottawa) County of St. Joseph, State of Michigan lying about the Crossing of the Grand Rapids & Indiana and the Michigan Air Line Rail Roads and is bounded as follows, to wit:

Streets.

Main Street as intended in the Plan of Wasepi is 2075 ft. long across the several widths as follows viz. Commencing at Stake and Stones in Section line at S.W. Corner 1/4 Sec. 15, thence running E. 550 ft. it is 66 ft. wide (33 ft. on each side of Sect. line) including 1/2 of St. not comprised in foregoing boundaries but laid out as Highway by Township Commissioners, thence continuing (in same course) 300 ft. to Mortar post the Street is laid 66 ft. wide, thence N. 1/2 S. 481 ft. to quarter line, it gradually increases to 66 ft. wide, thence continuing in nearly same course 125 ft. to Mortar post it increases to 100 ft. wide with the Section line for South boundary of said St., thence running E. 795 ft. with center line in Mortar post, this St. is 100 ft. wide, thence Eastward 417 ft. to half quarter line the Street lessens gradually to 80 ft. wide, the North line being fixed at the half quarter line by the line of Mortar posts (to e. by) and the South line likewise is fixed 80 ft. S. of quarter post, thence running E. 600 ft. the St. is laid 80 ft. wide, with 40 ft. on the N. side and 40 ft. on S. side of Sect. line, the part lying S. of Sect. line not being comprised within the foregoing boundaries but heretofore established as part of Highway by Township Commissioners.

Post Street commences in N. line of Main St. 630 ft. N. of the quarter line and extends 180 ft. North, and is 60 ft. wide.

Mill Street commences at post 125 ft. E. of gr. line 450 ft. N. Sect. line, and runs N. about 318 ft. to N. line of R.R. grounds runs thence N. 32 W. 296 ft. to post 5 and its width is 50 ft. throughout its length.

Lake Street commences 60 ft. S. of quarter post 9 runs S. 50 ft. in line of Mortar post 3 and is 66 ft. wide - 33 ft. on each side of the quarter line.

Sturgis Street commences in N. boundary of the Village 480 ft. E. of the gr. line runs thence S. 163 ft. that part lying N. of the M.A.L.R.R. is 50 ft. wide - 35 ft. on the E. side fixed by posts in Main & William Sts., and 15 ft. on W. side of this line; this Street is 70 ft. wide S. of the R.R. - 35 ft. on each side of the line of posts.

Mendon Street commences at Mortar post 7 1/2 east E. of gr. line in center of Main Street, and runs N. 610 ft. to N. line of this plot, and is 50 ft. wide.

William Street commences at post 6 1/2 E. of gr. line runs thence N. 63 E. 225 ft. to post 2 1/2 east E. of gr. line and 580 ft. S. of Sect. line, thence S. in line of posts 2 1/2 9 585 ft. and is laid 60 ft. wide.

East Street is 533.5 ft. long exclusive of Main & William Sts. and 65 ft. wide, its E. line is 150 ft. from the E. line of the Plat.

Wood Street is 1753 ft. long, and 60 ft. wide; its N. line is 90 ft. S. of Sect. line.

Numbers, Courses &c.

The Lots in the Village of Wasepi are designated by progressive numbers from 1 to 97 inclusive.

Distances are given in feet, and tenths of feet. The line between Sects 15 & 22 as fixed by posts is 9 1/2' assumed to be due East and West; the North and South lines laid at right angles to the Sect. line.

State of Michigan } County of St. Joseph }

On this 5th day of April One Thousand Eight Hundred and Seventy five before me a Justice of the Peace personally appeared Augustus J. C. Post and Davius C. G. G. to me known to the persons who signed the above Map of the Village of Wasepi in St. Joseph County Michigan as proprietors of parcels in said Village who have acknowledged the same to be their free act and deed for the purposes intended.

Received office fees for record Nov 15 1875 at St. Joseph Mo 1 30 Odell P. and rendered to the North of plots also 1 on page 5 M. A. Benedict Reg Justice of the Peace

PLAN OF THE VILLAGE OF WASEPI, IN St. Joseph County, Michigan.

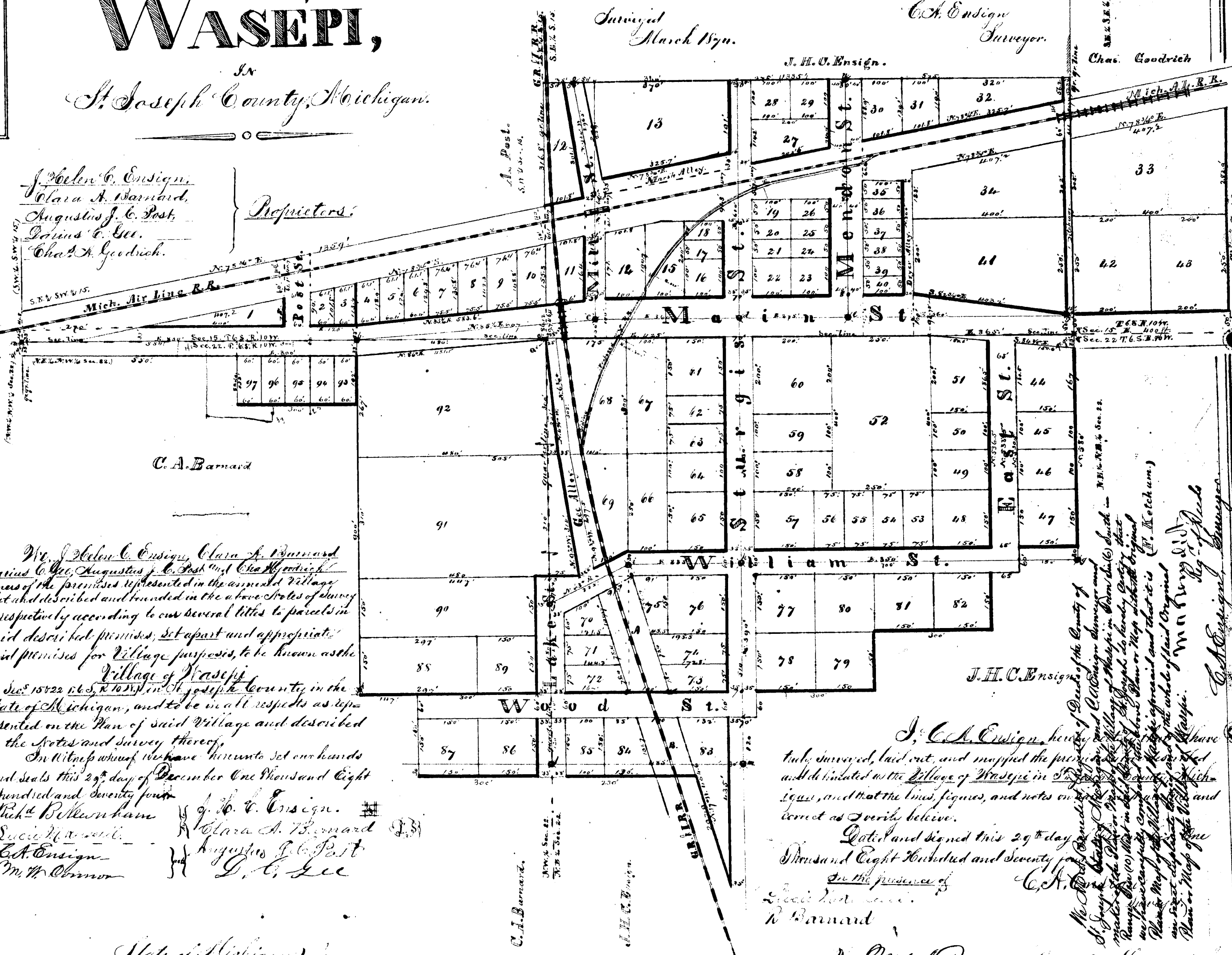
Proprietors: John C. Ensign, Clara A. Barnard, Augustus J. C. Post, Davius C. G., Chas. A. Goodrich.

Mr. J. C. Ensign, Clara A. Barnard, Davius C. G., Augustus J. C. Post and Chas. A. Goodrich owners of the premises represented in the annexed Village Plat as described and bounded in the above Sales of land do respectively according to our several titles to parcels in said described premises, set apart and appropriate said premises for Village purposes, to be known as the Village of Wasepi in St. Joseph County in the State of Michigan, and to be in all respects as represented in the Plan of said Village and described in the notes and survey thereof.

State of Michigan } County of Michigan } On this 29th day of December One Thousand Eight Hundred and Seventy four In witness whereof we have hereunto set our hands and seals this 29th day of December One Thousand Eight Hundred and Seventy four J. C. Ensign, Clara A. Barnard, Augustus J. C. Post, Davius C. G., Chas. A. Goodrich



Scale 20 ft. to 1 inch. Mortar posts established in the survey of the Village '8' to '6'. Stake & Stones corners established as U.S. Survey of Subdivision Corners 1877. Lines projected through four corners to limit and correct measurements of the several sections of the Village.



J. C. Ensign, hereby certify that I have surveyed, laid out, and mapped the premises as delineated as the Village of Wasepi in St. Joseph County Michigan, and that the lines, figures, and notes on the said map are correct as therein believed. Dated and signed this 29th day of December One Thousand Eight Hundred and Seventy four in the presence of Clara A. Barnard, Augustus J. C. Post, Davius C. G., Chas. A. Goodrich

Mr. M. A. Benedict, Justice of the Peace of the County of St. Joseph, State of Michigan and Clerk of the Peace and Justice of the Peace of the Village of Wasepi in St. Joseph County Michigan, do hereby certify that we have compared the above Copy of the Plan of the Village of Wasepi with the Record of the Plan of said Village and that it is a true and correct copy of the whole of said Plan of the Village of Wasepi. M. A. Benedict Justice of the Peace

Received office fees for record Nov 15 1875 at St. Joseph Mo 1 30 Odell P. and rendered to the North of plots also 1 on page 5 M. A. Benedict Reg Justice of the Peace

Boundaries.

The Village of Wasepi comprises parcels of land in Sections 15 and 22 in T. 3 S., R. 10 W., Township Nottawa, County of St. Joseph, State of Michigan...

Commencing at a stake and stones in the line between Sects. 15 & 22, in Section 15, at the corner of E.W. halves of the S.W. 1/4 Sec. 15, thence S. 75° 15' E. 150 ft. to the center of the R.R. track...

Streets.

Main Street as intended in the Plan of Wasepi is 79 ft. long and the several widths as follows: Commencing at State and Stone in Section 15 at S.W. corner of the S.W. 1/4 Sec. 15, thence running S. 55° 00' E. 1/2 C.P. width 33 ft. on each side of street line...

Post Street commences at line of Main St. 630 ft. W. by quarter line and extends 140 ft. N. 70° 00' E. and is 60 ft. wide.

Mitt Street commences at post 2 1/2 125 ft. S. of line 180 ft. S. of Sect. line, and runs N. about 3 1/2 ft. to N. line of R.R. grounds runs thence N. 29° 00' E. 296 ft. to post 3 and is 60 ft. wide throughout its length.

Lake Street commences 60 ft. S. of quarter post 9 1/2 runs S. 50 ft. in line of Main Street post 1 1/2 and is 60 ft. wide - 33 ft. on each side of the quarter line.

Sturgis Street commences in N. boundary of the Village 680 ft. E. of the gr. line runs thence S. 1630 ft., that part lying N. of the M.A.L.R.R. is 50 ft. wide - 30 ft. on each side lined by posts in Main & William Sts., and 18 ft. on W. side of this line; this Street is 70 ft. wide S. of the R.R. - 35 ft. on each side of the line of posts.

Mendon Street commences at Mortar post 2 1/2 East E. of gr. line in center of Main Street, and runs N. 100 ft. to N. line of Main St., and is 50 ft. wide.

William Street commences at post 1 1/2 180 ft. S. of gr. line runs thence N. 630 ft. to post 2 1/2 200 ft. E. of gr. line and 30 ft. S. of Sect. line, thence S. in line of posts 1 1/2 9 1/2 9 1/2 ft., and is 60 ft. wide.

East Street is 333 1/2 ft. long exclusive of Main & William Sts. and 60 ft. wide; its E. line is 150 ft. from the E. line of the Plat.

Wood Street 157 1/2 ft. long, and 60 ft. wide; its N. line is 90 ft. S. of Sect. line.

Numbers, Courses &c.

The Lots in the Village of Wasepi are designated by progressive numbers from 1 to 97 inclusive.

Distances are given in feet, and both of feet. The line between Sects. 15 & 22 as fixed by posts 2 1/2 9 1/2 is assumed to be due East and West; the North and South lines laid at right angles to the Sect. line.

State of Michigan } Court of St. Joseph }

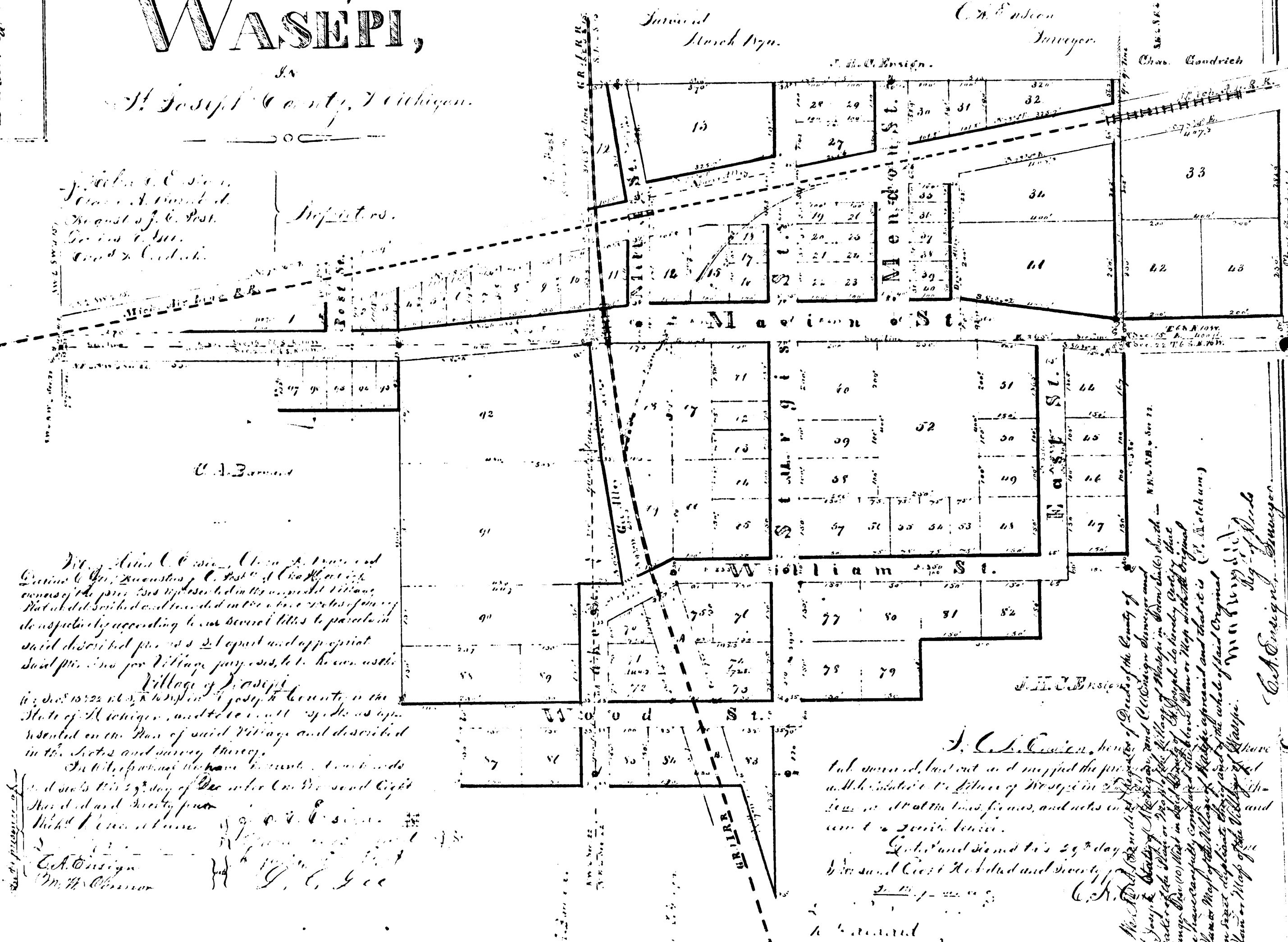
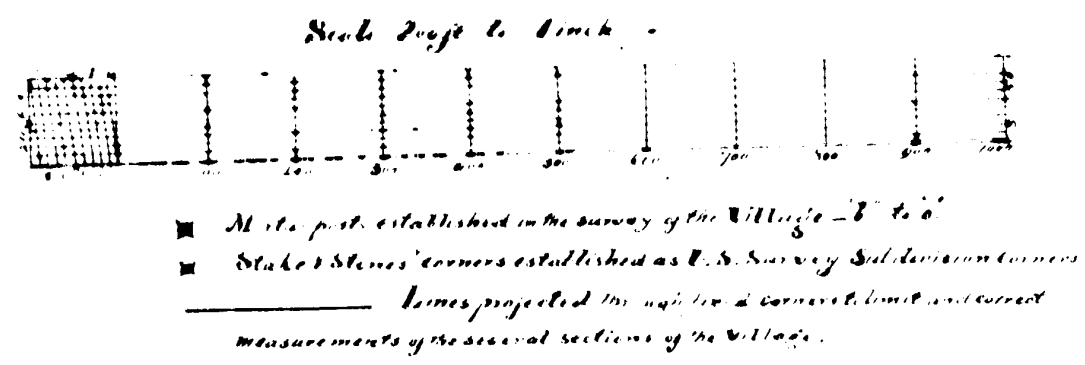
In this 5th day of April A.D. 1875, the Court of St. Joseph in and for the County of St. Joseph, Michigan, do hereby certify that the within and foregoing is a true and correct copy of the original of the same as the same appears from the records of the Court of St. Joseph in and for the County of St. Joseph, Michigan.

Respectfully signed by the Court of St. Joseph in and for the County of St. Joseph, Michigan, at St. Joseph, Mich., this 5th day of April, 1875. J. C. Cassin, Clerk of the Court.

PLAN OF THE VILLAGE OF WASEPI, IN St. Joseph County, Michigan.

Received and filed in the Office of the General Office of St. Joseph County, Michigan, this 5th day of April, 1875. J. C. Cassin, Clerk of the Court.

It is the duty of the Court of St. Joseph in and for the County of St. Joseph, Michigan, to certify that the within and foregoing is a true and correct copy of the original of the same as the same appears from the records of the Court of St. Joseph in and for the County of St. Joseph, Michigan.



Witness my hand and seal of the County of St. Joseph, Michigan, this 5th day of April, 1875. J. C. Cassin, Clerk of the Court.