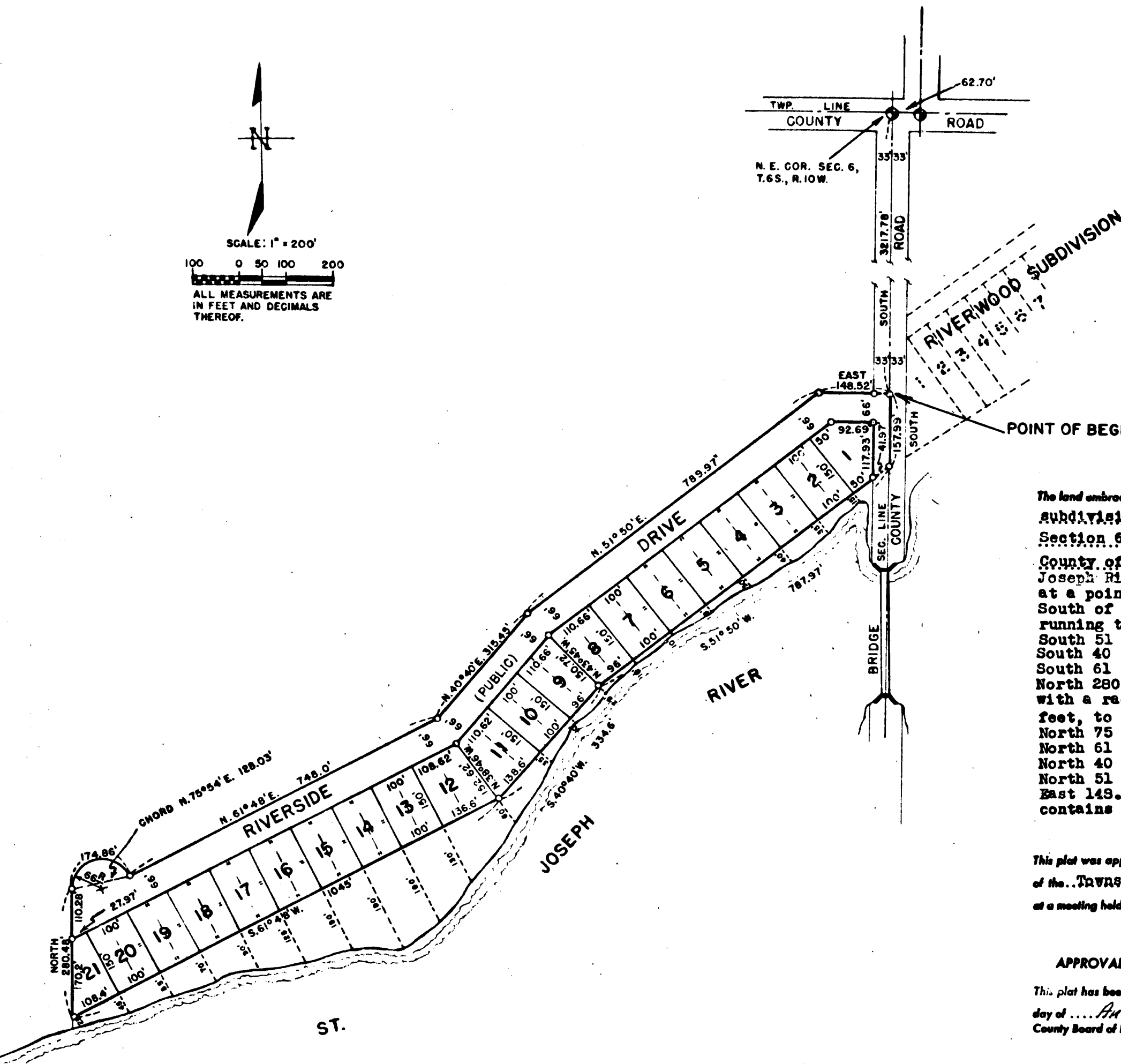
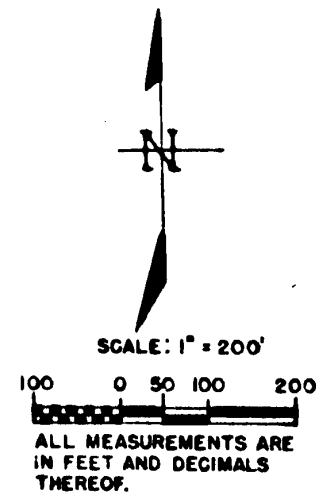


RIVERVIEW SHORES

A SUBDIVISION IN THE S. E. FR'L 1/4 OF SECTION 6, T.6S., R.10W.,
TOWNSHIP OF NOTTAWA, COUNTY OF ST. JOSEPH, MICHIGAN
LYING NORTH OF ST. JOSEPH RIVER.



Notary's Office
St. Joseph County, ss.
Plat of Riverview Shores
Township of Nottawa
was Recorded this 1st day of
September, 1955 at 9:15 o'clock
A.M. in Liber 3 of Plate
in Page 59
Samuel E. Sommers
Registered Notary

I hereby certify this copy is a true copy of map or
plat forwarded the Register of Deeds for recording.
Date August 30 1955
Filed in Register General's Dept.
Date September 23 1955
Examined and approved
Date August 30 1955
Vera L. Krum
Register General
D.L. MacElroy
Plat Book #

DEDICATION

KNOW ALL MEN BY THESE PRESENTS, that we Lee Roy M. Angell and
Opal D. Angell, his wife, Noel T. Krum and Vera L.
Krum, his wife, as proprietors, have caused the
land embraced in the annexed plat to be surveyed,
laid out and platted, to be known as "Riverview
Shores" a subdivision in the Southeast fractional
quarter of Section 6, T.6 S., R.10 W., Township of
Nottawa, County of St. Joseph, Michigan, lying North
of St. Joseph River and that Riverside Drive and
that portion of County Road, as shown on said plat,
are hereby dedicated to the use of the public.

Signed and Sealed in
the Presence of
Jay R. White, Jr. (Witness) Lee Roy M. Angell (L.S.)
Margaret J. White (Witness) Opal D. Angell (L.S.)
Noel T. Krum (L.S.)
Vera L. Krum (L.S.)

ACKNOWLEDGMENT

STATE OF MICHIGAN }
County of St. Joseph } ss.
On this 1st day of July, 1955 before me,
a Notary Public in and for said County, personally came the above named
Lee Roy M. Angell and Opal D. Angell, his wife,
Noel T. Krum and Vera L. Krum, his wife, as
proprietors
known to me to be the persons who executed the above dedication, and acknowledged
the same to be their free act and deed.
George D. Bradford
Notary Public, St. Joseph County
My Commission expires 2/2/56

SURVEYOR'S CERTIFICATE

I hereby certify that the plat herein delineated is a correct one, and that permanent
monuments consisting of iron rods of at least one half inch in diameter and 36 inches in
length, encased in concrete cylinders four inches in diameter and 36 inches in length,
have been set at points marked thus (O) as thereon shown at all angles in the bound-
aries of the land platted, at all intersections of the lines of streets and at intersections
of the lines of streets with the boundaries of the plat.

Earl N. James
Registered Professional Engineer

DESCRIPTION OF LAND PLATTED

The land embraced in the annexed plat of "Riverview Shores" a
subdivision in the Southeast fractional quarter of
Section 6, T.6 S., R.10 W., Township of Nottawa,
County of St. Joseph, Michigan, lying North of St.
Joseph River, is described as follows: Beginning
at a point on the East section line 3217.78 feet
South of the Northeast corner of Section 6, and
running thence South 157.99 feet; thence
South 51 degrees 50 minutes West 787.97 feet; thence
South 40 degrees 40 minutes West 334.8 feet; thence
South 61 degrees 48 minutes West 1045.00 feet; thence
North 280.48 feet; thence on a curve to the right
with a radius of 66 feet, for a distance of 174.86
feet, to a point reached by a chord which runs
North 75 degrees 54 minutes East 128.03 feet; thence
North 61 degrees 48 minutes East 748.00 feet; thence
North 40 degrees 40 minutes East 315.45 feet; thence
North 51 degrees 50 minutes East 789.97 feet; thence
East 148.52 feet to beginning. This subdivision
contains 21 lots.

MUNICIPAL APPROVAL

This plat was approved by the Township Board
of the Township of NOTTAWA
at a meeting held July 19, 1955
William L. Cutler
William L. Cutler, (Clerk)

APPROVAL BY BOARD OF COUNTY ROAD COMMISSIONERS

This plat has been examined and was approved on the 25th
day of August, 1955, by the St. Joseph
County Board of Road Commissioners.
Paul L. Ahlgren (Chairman)
Woyce T. Percy (Member)
Ivan Bent (Member)

COUNTY TREASURER'S CERTIFICATE

Office of County Treasurer, St. Joseph County.
I hereby certify, that there are no tax liens or titles held by the State on the lands de-
scribed hereon, and that there are no tax liens or titles held by individuals on said lands,
for the five years preceding the 20th day of
August, 1955 and that the taxes for said period of
five years are all paid, as shown by the records of this office.

This certificate does not apply to taxes, if any, now in process of collection by township,
city or village collecting officers.
Irene Hibbard
Irene Hibbard, (County Treasurer)

APPROVAL BY COUNTY PLAT BOARD

This plat was approved on the 26th day of
August, 1955, by the
St. Joseph County Plat Board

Donald E. Donmyer (County Register of Deeds)
John W. Marvin (County Clerk)
Irene Hibbard (County Treasurer)
Richard K. Olin (County Drain Commissioner)

36726