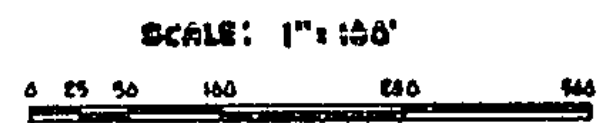
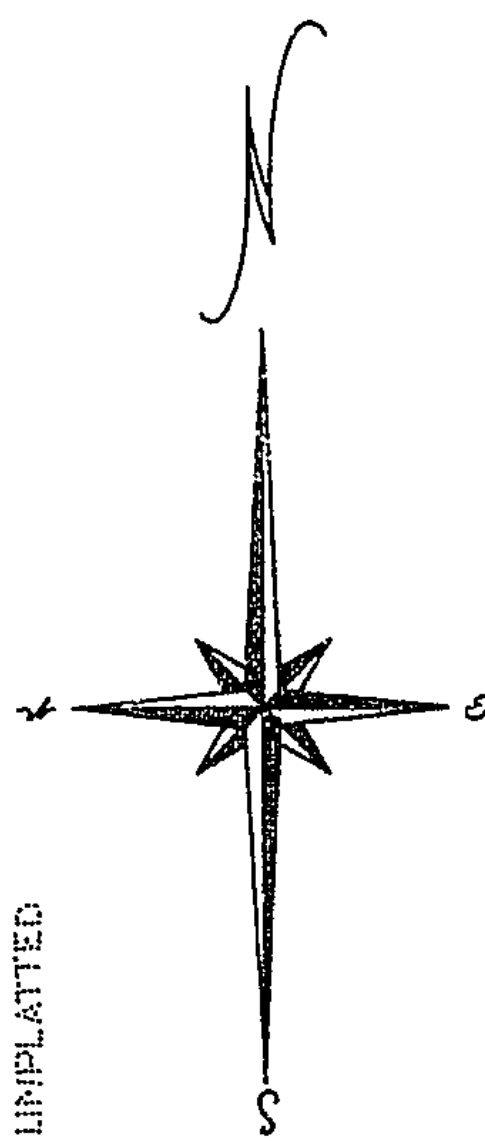
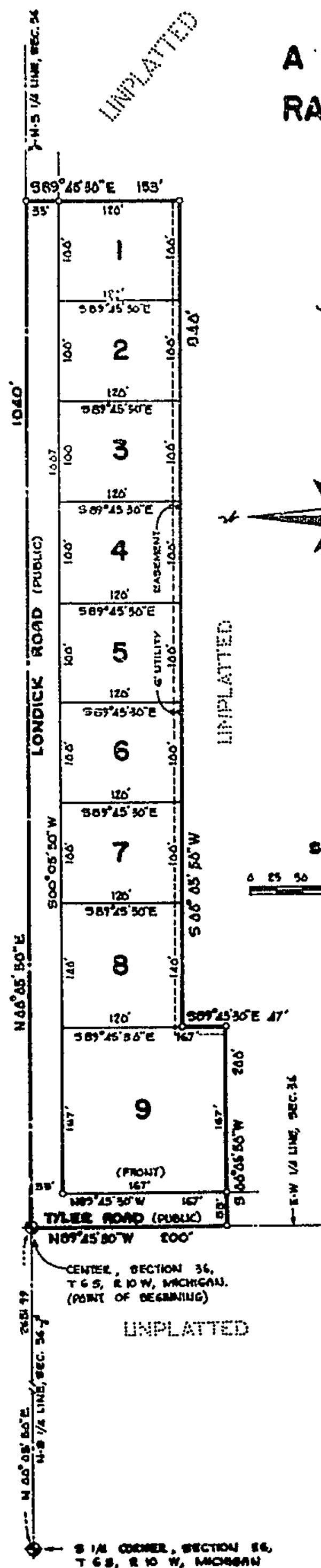


Restrictions to Plat. recorded in Liber 365 of Records, Page 383

JERRY YODER SUBDIVISION

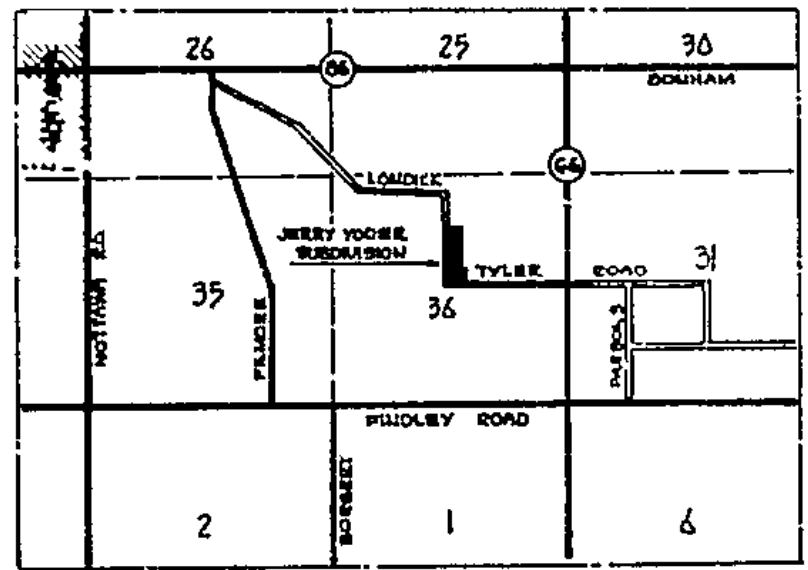
A SUBDIVISION SITUATED IN THE WEST 1/2 OF THE NE 1/4 OF SECTION 36, TOWN 6 SOUTH, RANGE 10 WEST, NOTTAWA TOWNSHIP, ST. JOSEPH COUNTY, MICHIGAN.



LEGEND

PLAT BEARINGS WERE ESTABLISHED BY THE EAST LINE OF SECTION 36 AS SHOWN BY THE MICHIGAN STATE HIGHWAY DEPARTMENT (STATE HIGHWAY M-16, NOW M-66, PROJ. NUMBER 07018).
 ALL DIMENSIONS ARE IN FEET.
 1" CONCRETE MONUMENTS ARE AT ALL POINTS MARKED THIS "1".
 ALL LOT CORNERS ARE MARKED BY 1 1/2" x 1 1/2" SOLID IRON BAR.

VICINITY MAP (NO SCALE)



CERTIFICATE OF MUNICIPAL APPROVAL

I CERTIFY THAT THIS PLAT WAS APPROVED BY THE TOWNSHIP BOARD OF THE TOWNSHIP OF NOTTAWA AT A MEETING HELD NOVEMBER 20, 1972 AND WAS REVIEWED AND FOUND TO BE IN COMPLIANCE WITH ACT 206, P.A. 1967. THIS PLAT WAS APPROVED ON NOVEMBER 16, 1972, BY THE ST. JOSEPH COUNTY HEALTH DEPARTMENT.

Pauline Deelman
 PAULINE DEELMAN, CLERK

COUNTY DRAIN COMMISSIONER'S CERTIFICATE

APPROVED ON NOVEMBER 16, 1972, AS COMPLYING WITH SECTION 172 OF ACT 258, P.A. 1967, AND THE APPLICABLE RULES AND REGULATIONS PUBLISHED BY MY OFFICE IN THE COUNTY OF ST. JOSEPH.

Lloyd A. Huff
 LLOYD A. HUFF, DRAIN COMMISSIONER

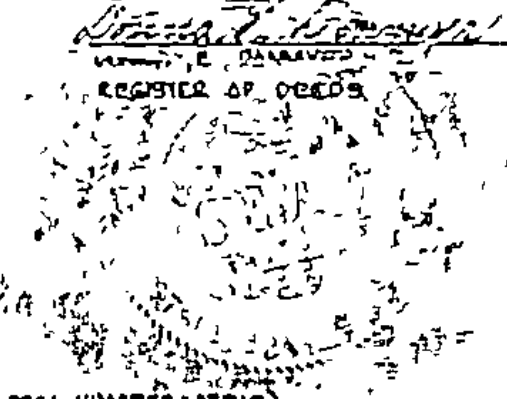
COUNTY PLAT BOARD CERTIFICATE:

THIS PLAT HAS BEEN REVIEWED AND IS APPROVED BY THE ST. JOSEPH COUNTY PLAT BOARD ON NOVEMBER 22, 1972 AS BEING IN COMPLIANCE WITH ALL OF THE PROVISIONS OF ACT 258, P.A. 1967, AND THE PLAT BOARD'S APPLICABLE RULES AND REGULATIONS.

Donna E. Donmyer *Beverly Buchanan* *Stanley M. Huff*
 DONNA E. DONMYER BEVERLY BUCHANAN STANLEY M. HUFF
 REGISTER OF DEEDS COUNTY CLERK COUNTY TREASURER

RECORDING CERTIFICATE
 REGISTER OF DEEDS OFFICE
 COUNTY OF ST. JOSEPH S.S.

THIS PLAT OF JERRY YODER SUBDIVISION WAS RECORDED THIS 18th DAY OF Dec. 1972, AT 11:21 O'CLOCK P.M. IN LIBER 5 OF PLATS ON PAGE 117.



CERTIFICATE OF COUNTY ROAD COMMISSIONERS

APPROVED ON NOVEMBER 16, 1972 AS COMPLYING WITH SECTIONS 183 OF ACT 258, P.A. 1967, AND THE APPLICABLE PUBLISHED RULES AND REGULATIONS OF THE BOARD OF ROAD COMMISSIONERS OF ST. JOSEPH COUNTY.

Frank Stollenberger *Carl Roberts* *D.W. Arney*
 FRANK STOLLENBERGER CARL ROBERTS D.W. ARNEY
 CHAIRMAN MEMBER MEMBER

COUNTY TREASURER'S CERTIFICATE

THE RECORDS IN MY OFFICE SHOW NO UNPAID TAXES OR SPECIAL ASSESSMENTS FOR THE FIVE YEARS PRECEDING NOVEMBER 16, 1972, INVOLVING THE LANDS INCLUDED IN THIS PLAT.

Stanley M. Huff
 STANLEY M. HUFF, ST. JOSEPH COUNTY TREASURER

PROPRIETOR'S CERTIFICATE - INDIVIDUALS

WE, AS PROPRIETORS, CERTIFY THAT WE CAUSED THE LAND ENCOMPASSED IN THIS PLAT TO BE SURVEYED, DIVIDED, MAPPED AND DESIGNATED AS REPRESENTED ON THIS PLAT AND THAT THOSE PORTIONS OF LONDICK AND TYLER ROADS WHICH FALL WITHIN THE BOUNDARY OF SAID PLAT ARE FOR THE USE OF THE PUBLIC; THAT THE PUBLIC UTILITY EASEMENTS ARE PRIVATE EASEMENTS AND THAT ALL OTHER EASEMENTS ARE FOR THE USES SHOWN ON THE PLAT.

Jerry Yoder *Alma Yoder* *Robert E. Savers*
 JERRY YODER ALMA YODER ROBERT E. SAYERS
 RT #1, BURR OAK, MICH, 49030 RT #1, BURR OAK, MICH, 49030 WITNESS

Albert S. Hochstetler *Lizzie S. Hochstetler* *John L. Savers*
 ALBERT S. HOCHSTETLER LIZZIE S. HOCHSTETLER JOHN L. SAYERS
 RT #3, BOX 12, STURGE, MICH, 49081 RT #3, BOX 12, STURGE, MICH, 49081 WITNESS

ACKNOWLEDGEMENT

STATE OF MICHIGAN SS
 COUNTY OF ST. JOSEPH SS

PERSONALLY CAME BEFORE ME THIS 16th DAY OF NOVEMBER THE ABOVE NAMED JERRY YODER AND ALMA YODER, HIS WIFE, ALBERT L. HOCHSTETLER AND LIZZIE S. HOCHSTETLER, HIS WIFE, TO ME KNOWN TO BE THE PERSONS WHO EXECUTED THE FOREGOING INSTRUMENT AND ACKNOWLEDGED THAT THEY EXECUTED THE SAME AS THEIR FREE ACT AND DEED.

NOTARY PUBLIC, *John L. Savers* *St. Joseph* COUNTY, MICHIGAN
 JOHN L. SAYERS, ST. JOSEPH COUNTY
 MY COMMISSION EXPIRES: MAY 29, 1976

SURVEYOR'S CERTIFICATE

I, ROBERT E. SAYERS, SURVEYOR, CERTIFY: THAT I HAVE SURVEYED, DIVIDED AND MAPPED THE LAND SHOWN ON THIS PLAT, DESCRIBED AS FOLLOWS: JERRY YODER SUBDIVISION, A SUBDIVISION SITUATED IN THE WEST 1/2 OF THE NE 1/4 OF SECTION 36, TOWN 6 SOUTH, RANGE 10 WEST, NOTTAWA TOWNSHIP, ST. JOSEPH COUNTY, MICHIGAN, IS DESCRIBED AS FOLLOWS: COMMENCING AT THE S 1/4 CORNER OF SAID SECTION 36 AND RUNNING THENCE N 89° 45' 30" E ALONG THE N-S 1/4 LINE OF SAID SECTION A DISTANCE OF 2691.99 FEET TO THE CENTER OF SAID SECTION 36, WHICH IS THE POINT OF BEGINNING; THENCE N 89° 45' 30" E ALONG SAID N-S 1/4 LINE 1000 FEET, THENCE S 89° 45' 30" E, PARALLEL WITH THE E-W 1/4 LINE OF SAID SECTION, 153 FEET, THENCE S 89° 45' 30" E, PARALLEL WITH SAID N-S 1/4 LINE, 640 FEET, THENCE S 89° 45' 30" E, PARALLEL WITH SAID E-W 1/4 LINE, 47 FEET, THENCE S 89° 45' 30" E, PARALLEL WITH SAID N-S 1/4 LINE, 200 FEET TO THE E-W 1/4 LINE OF SAID SECTION, THENCE N 89° 45' 30" W ALONG SAID E-W 1/4 LINE 200 FEET TO THE POINT OF BEGINNING. THIS SUBDIVISION CONTAINS 9 NUMBERED LOTS. THAT I HAVE MADE SUCH SURVEY, LAND-DIVISION AND PLAT BY THE DIRECTION OF THE OWNERS OF SUCH LAND THAT SUCH PLAT IS A CORRECT REPRESENTATION OF ALL THE EXTERIOR BOUNDARIES OF THE LAND SURVEYED AND THE SUBDIVISION OF IT. THAT THE REQUIRED MONUMENTS AND LOT MARKERS HAVE BEEN LOCATED IN THE GROUND AS REQUIRED BY SECTION 125 OF THE ACT. THAT THE ACCURACY OF THE SURVEY IS WITHIN THE LIMITS REQUIRED BY SECTION 125 OF THE ACT. THAT THE BEARINGS SHOWN ON THE PLAT ARE EXPRESSED AS REQUIRED BY SECTION 125 OF THE ACT AND AS EXPLAINED IN THE LEGEND.

EXAMINED AND APPROVED
 Date *Dec. 12, 1972*
Allison Green
 ALLISON GREEN
 STATE TREASURER
 By *Richard E. Lomas*
 Richard E. Lomas, Sec. Cr.

Robert E. Savers
 ROBERT E. SAYERS, R.L.S. #7874
 P.O. BOX 211, STURGE, MICH, 49091

NOVEMBER 15, 1972
 DATE

