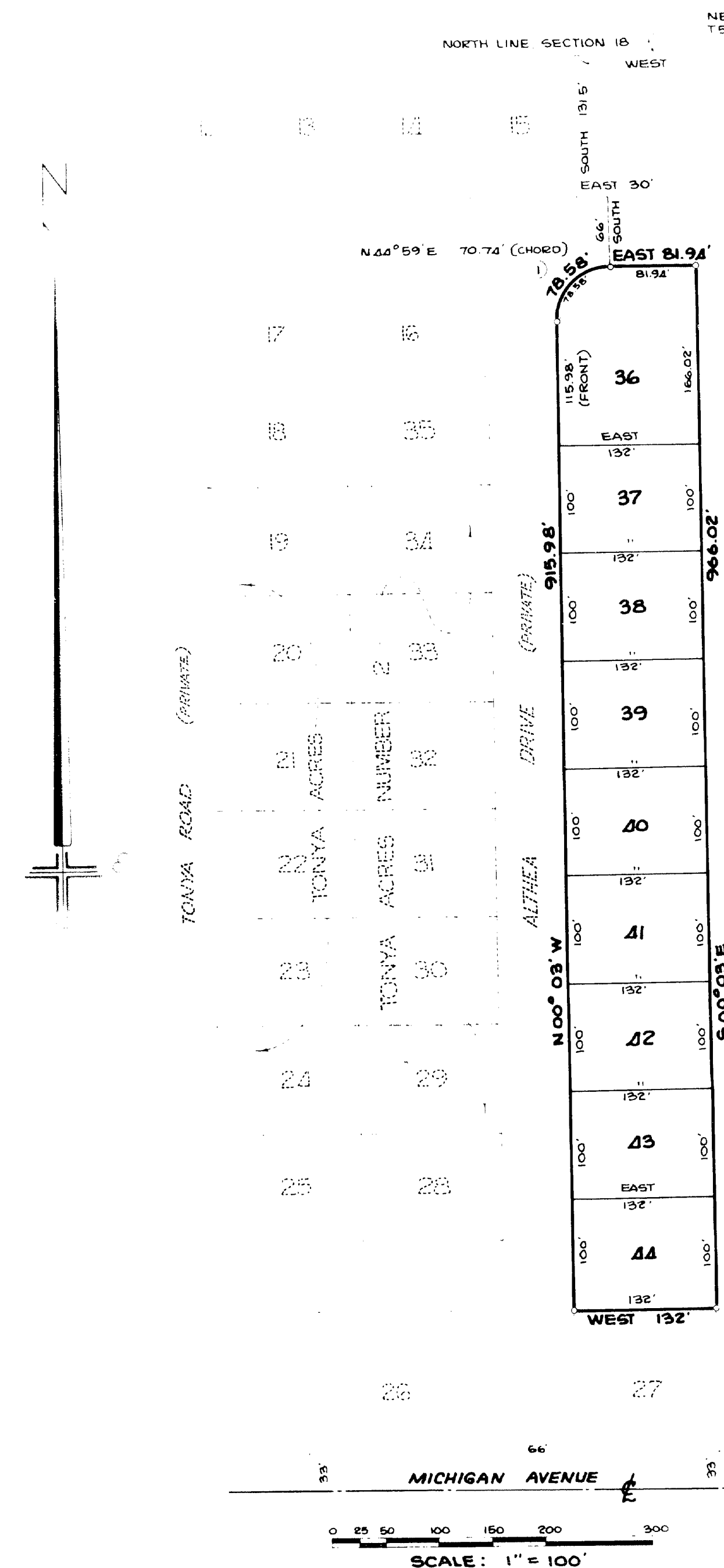


# TONYA ACRES NUMBER 3

A SUBDIVISION  
SITUATED IN THE NE 1/4 OF THE NE 1/4 OF SECTION 18,  
T5S, R10W, MENDON TOWNSHIP, ST. JOSEPH COUNTY,  
MICHIGAN



**LEGEND:**  
PLAT BEARINGS WERE ESTABLISHED BY THE NORTH LINE OF SECTION 18 AS SHOWN ON THE RECORDED PLAT OF TONYA ACRES.  
ALL DIMENSIONS ARE IN FEET.  
ALL CURVE DIMENSIONS ARE ARC DIMENSIONS.  
4" CONCRETE MONUMENTS ARE AT ALL POINTS MARKED THIS "O"  
ALL LOT CORNERS ARE MARKED BY A 1/2" x 18" SOLID IRON BAR.

**CERTIFICATE OF MUNICIPAL APPROVAL**  
I CERTIFY THAT THIS PLAT WAS APPROVED BY THE TOWNSHIP BOARD OF THE TOWNSHIP OF MENDON AT A MEETING HELD SEPT. 1, 1970, AND WAS REVIEWED AND FOUND TO BE IN COMPLIANCE WITH ACT 288, P.A. 1967. THIS PLAT WAS APPROVED ON JUNE 24, 1970, BY THE ST. JOSEPH COUNTY HEALTH DEPARTMENT.

*Fern Moyer*  
FERN MOYER, TOWNSHIP CLERK

**CERTIFICATE OF COUNTY ROAD COMMISSIONERS**  
APPROVED ON JULY 9, 1970, AS COMPLYING WITH SECTIONS 183 OF ACT 288, P.A. 1967, AND THE APPLICABLE PUBLISHED RULES AND REGULATIONS OF THE BOARD OF ROAD COMMISSIONERS OF ST. JOSEPH COUNTY.

*Carl Roberts*      *Frank Shellenbarger*  
CARL ROBERTS, MEMBER      FRANK SHELLENBARGER, MEMBER  
*D.W. Arney*  
D.W. ARNEY, CHAIRMAN

**COUNTY DRAIN COMMISSIONER'S CERTIFICATE**  
APPROVED ON JULY 7, 1970, AS COMPLYING WITH SECTION 192 OF ACT 288, P.A. 1967, AND THE APPLICABLE RULES AND REGULATIONS PUBLISHED BY MY OFFICE IN THE COUNTY OF ST. JOSEPH.

*Louis J. Vincent*  
LOUIS J. VINCENT, DRAIN COMMISSIONER

**COUNTY TREASURER'S CERTIFICATE**  
THE RECORDS IN MY OFFICE SHOW NO UNPAID TAXES OR SPECIAL ASSESSMENTS FOR THE FIVE YEARS PRECEDING JULY 7, 1970, INVOLVING THE LANDS INCLUDED IN THIS PLAT.

*Stanley M. Huff*      *St. Joseph County*  
STANLEY M. HUFF, COUNTY TREASURER, ST. JOSEPH COUNTY

**COUNTY PLAT BOARD CERTIFICATE**  
THIS PLAT HAS BEEN REVIEWED AND IS APPROVED BY THE ST. JOSEPH COUNTY PLAT BOARD ON SEPT. 4, 1970, AS BEING IN COMPLIANCE WITH ALL OF THE PROVISIONS OF ACT 288, P.A. 1967, AND THE PLAT BOARD'S APPLICABLE RULES AND REGULATIONS.

*Donna E. Donmyer*      *John W. Marvin*      *Stanley M. Huff*  
DONNA E. DONMYER      JOHN W. MARVIN      STANLEY M. HUFF  
REGISTER OF DEEDS      COUNTY CLERK      COUNTY TREASURER

REGISTER OF DEEDS OFFICE      S.S.  
ST. JOSEPH COUNTY  
THIS PLAT OF TONYA ACRES NUMBER 3 WAS RECORDED THIS 22 DAY OF  
Oct. 1970, AT 4:29 O'CLOCK P.M., IN LIBER 5 OF PLATS ON  
PAGE 26  
*Donna E. Donmyer*  
DONNA E. DONMYER  
REGISTER OF DEEDS

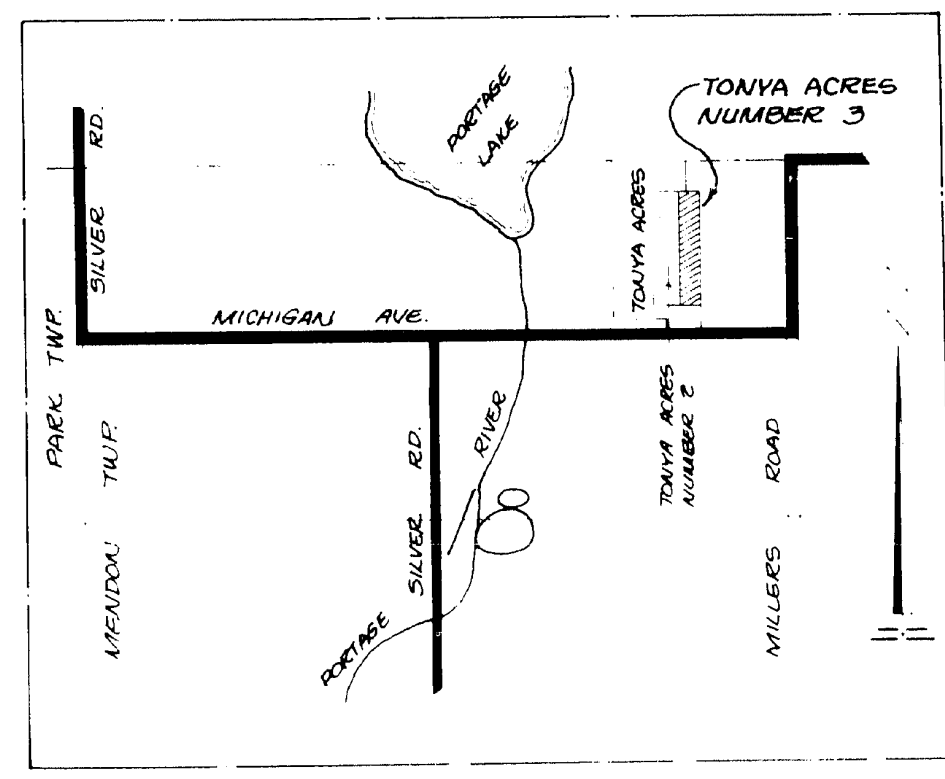
**PROPRIETOR'S CERTIFICATE - INDIVIDUALS**  
WE, AS PROPRIETORS, CERTIFY THAT WE CAUSED THE LAND EMBRACED IN THIS PLAT TO BE SURVEYED, DIVIDED, MAPPED AND DEDICATED AS REPRESENTED ON THIS PLAT AND THAT THE PUBLIC UTILITY EASEMENTS ARE PRIVATE EASEMENTS AND THAT ALL OTHER EASEMENTS ARE FOR THE USES SHOWN ON THE PLAT.

*Samuel W. Neal*      *Helen E. Neal*  
SAMUEL W. NEAL      HELEN E. NEAL  
RTE. 1, MENDON, MICH. 49072      RTE. 1, MENDON, MICH. 49072  
*Robert E. Sayers*      *Jean L. Sayers*  
ROBERT E. SAYERS, WITNESS      JEAN L. SAYERS, WITNESS

**ACKNOWLEDGEMENT**  
STATE OF MICHIGAN      S.S.  
COUNTY OF ST. JOSEPH  
PERSONALLY CAME BEFORE ME THIS 7th DAY OF July, 1970, THE ABOVE NAMED SAMUEL W. NEAL AND HELEN E. NEAL, HIS WIFE, TO ME KNOWN TO BE THE PERSONS WHO EXECUTED THE FOREGOING INSTRUMENT AND ACKNOWLEDGED THAT THEY EXECUTED THE SAME AS THEIR FREE ACT AND DEED  
NOTARY PUBLIC, *Jean L. Sayers*      St. Joseph County, Michigan.  
JEAN L. SAYERS, ST. JOSEPH COUNTY  
MY COMMISSION EXPIRES: MAY 27, 1972

**SURVEYOR'S CERTIFICATE**  
I, ROBERT E. SAYERS, SURVEYOR, CERTIFY THAT I HAVE SURVEYED, DIVIDED AND MAPPED THE LAND SHOWN ON THIS PLAT, DESCRIBED AS FOLLOWS: TONYA ACRES NUMBER 3, A SUBDIVISION SITUATED IN THE NE 1/4 OF THE NE 1/4 OF SECTION 18, T5S, R10W, MENDON TOWNSHIP, ST. JOSEPH COUNTY, MICHIGAN, IS DESCRIBED AS FOLLOWS: COMMENCING AT THE NE CORNER OF SAID SECTION 18 AND RUNNING THENCE WEST, ALONG THE NORTH LINE OF SAID SECTION 18, A DISTANCE OF 775.18 FEET, THENCE SOUTH 131.5 FEET, THENCE EAST 30 FEET, THENCE SOUTH 66 FEET TO THE POINT OF BEGINNING; THENCE EAST 81.94 FEET, THENCE S 00° 03' E 966.02 FEET, THENCE WEST 132 FEET, THENCE N 00° 03' W 915.98 FEET, THENCE NORTHEASTERLY, ALONG A CURVE TO THE RIGHT HAVING ARC DISTANCE OF 78.58 FEET (SAID CURVE HAVING AN I ANGLE OF 90° 03' AND BEING SUBTENDED BY A CHORD BEARING N 44° 59' E, 70.74 FEET) TO THE POINT OF BEGINNING. THIS SUBDIVISION CONTAINS 9 NUMBERED LOTS. THAT I HAVE MADE SUCH SURVEY, LAND DIVISION AND PLAT BY THE DIRECTION OF THE OWNERS OF SUCH LAND, THAT SUCH PLAT IS A CORRECT REPRESENTATION OF ALL THE EXTERIOR BOUNDARIES OF THE LAND SURVEYED AND THE SUBDIVISION OF IT, THAT THE REQUIRED MONUMENTS AND LOT MARKERS HAVE BEEN LOCATED IN THE GROUND, AS REQUIRED BY SECTION 125 OF THE ACT, THAT THE ACCURACY OF THE SURVEY IS WITHIN THE LIMITS REQUIRED BY SECTION 126 OF THE ACT, THAT THE BEARINGS SHOWN ON THE PLAT ARE EXPRESSED AS REQUIRED BY SECTION 126 (3) OF THE ACT AND AS EXPLAINED IN THE LEGEND.

*Robert E. Sayers*      July 7, 1970  
ROBERT E. SAYERS, REGISTERED LAND SURVEYOR #7874      DATE  
P.O. BOX 212, STURGIS, MICHIGAN 49091



*Richard E. Lomas*  
Nov. 2, 1970

CURVE	RADIUS	"I" ANGLE	ARC LENGTH	CHORD	BEARING/DISTANCE
1	50'	90° 03'	78.58'	N 44° 59' E	70.74'

51931

