

TAMARAC NO. 5

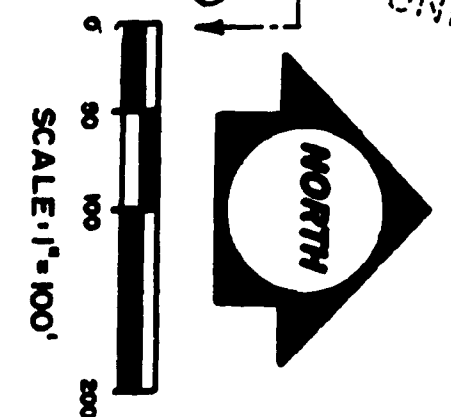
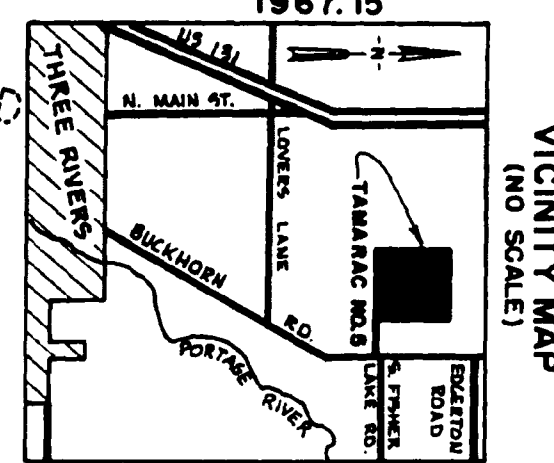
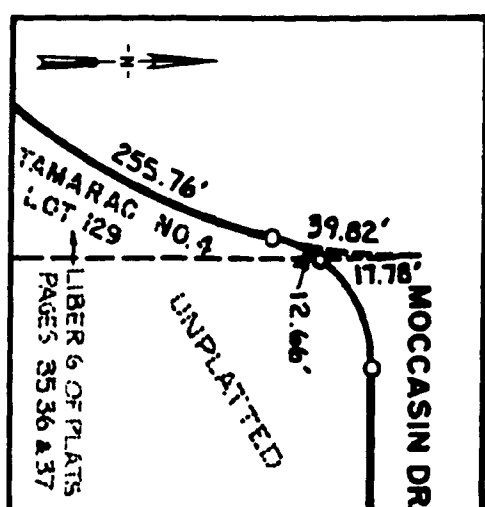
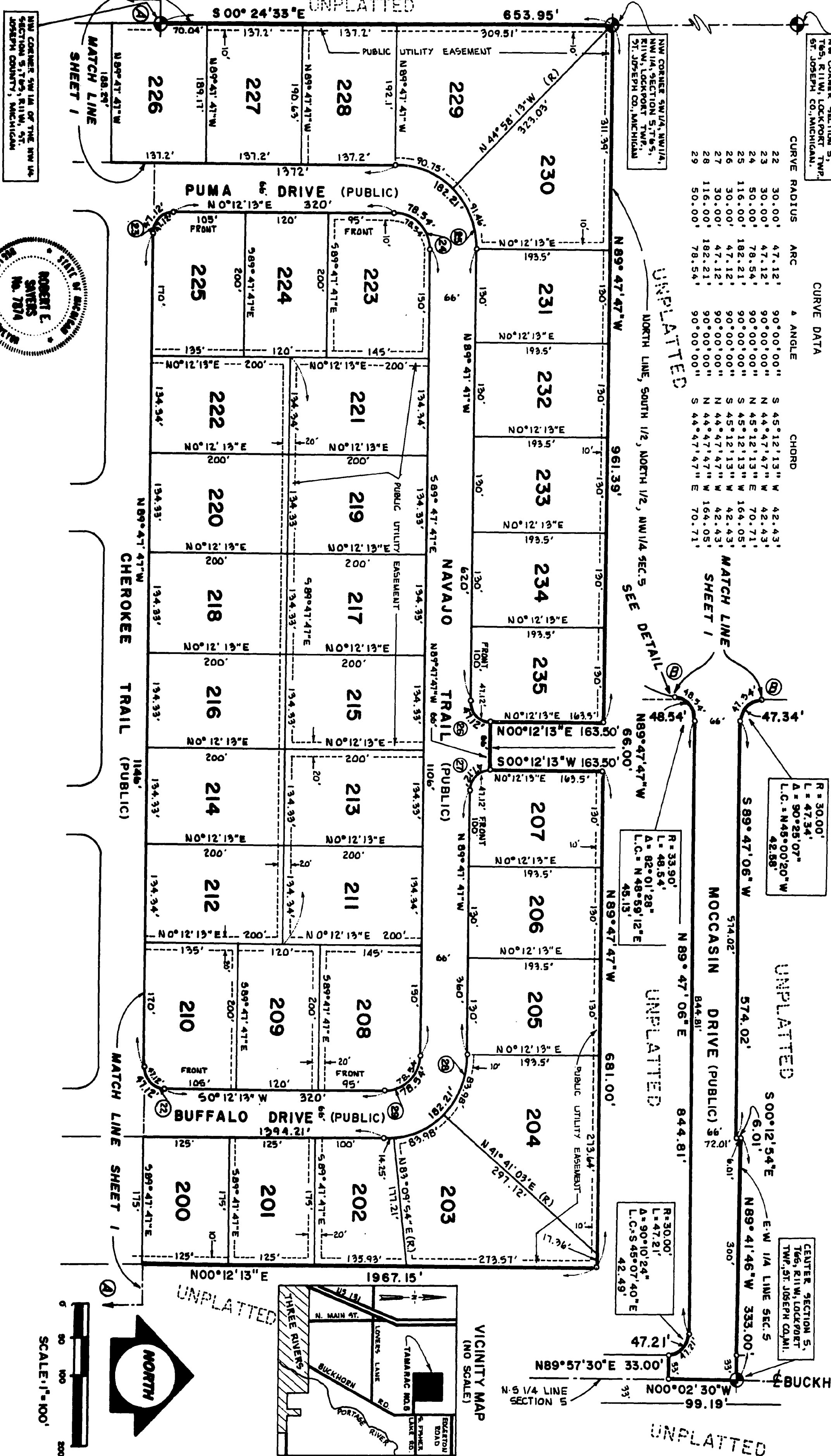
A SUBDIVISION SITUATED IN THE NW 1/4 AND THE SW 1/4 OF SECTION 5,
TOWN 6 SOUTH, RANGE 11 WEST, LOCKPORT TOWNSHIP, ST. JOSEPH COUNTY, MICHIGAN.

- LEGEND**
1. ALL DIMENSIONS ARE IN FEET.
 2. ALL CURVE DIMENSIONS ARE ARC DIMENSIONS.
 3. CONCRETE MONUMENTS HAVE BEEN PLACED AT ALL POINTS MARKED 0.
 4. LOT CORNERS HAVE BEEN MARKED WITH 1/2 INCH IRON BAR.
 5. BEARINGS WERE ESTABLISHED FROM THE RECORDED PLAT OF RICK'S MANOR, LIBER 3 OF PLATS, PAGE 70.
 6. (R)=RADIAL LOT LINES.

THIS PLAT IS SUBJECT TO RESTRICTIONS AS REQUIRED BY ACT 288 OF 1967, AS AMENDED, ON CERTAIN LOTS WITH RESPECT TO THE REQUIREMENTS OF THE MICHIGAN DEPARTMENT OF PUBLIC HEALTH, WHICH ARE RECORDED IN LIBER 282, PAGE 47, OF RECORDS OF THIS COUNTY.

CURVE DATA

CURVE RADIUS	ARC	ANGLE	CHORD
22	30.00'	47.12'	90°00'00"
23	30.00'	47.12'	90°00'00"
24	30.00'	78.54'	N 45°12'13" W 42.43'
25	116.00'	182.21'	N 45°12'13" W 70.71'
26	30.00'	47.12'	S 45°12'13" W 164.05'
27	30.00'	47.12'	90°00'00"
28	116.00'	182.21'	N 45°12'13" W 42.43'
29	50.00'	78.54'	N 45°12'13" W 164.05'



NW CORNER SW 1/4 OF THE NW 1/4 SECTION 5, T6S, R11W, ST. JOSEPH COUNTY, MICHIGAN

NW CORNER SW 1/4, NW 1/4, NW 1/4, SECTION 5, T6S, R11W, LOCKPORT TWP., ST. JOSEPH CO., MICHIGAN

NW CORNER SECTION 5, T6S, R11W, LOCKPORT TWP., ST. JOSEPH CO., MICHIGAN

R=30.00'
L=47.34'
L.C.=N49°00'20"W
42.88'

R=33.90'
L=48.54'
L.C.=N48°59'12"E
45.13'

R=30.00'
L=47.21'
L.C.=S45°07'40"E
42.49'

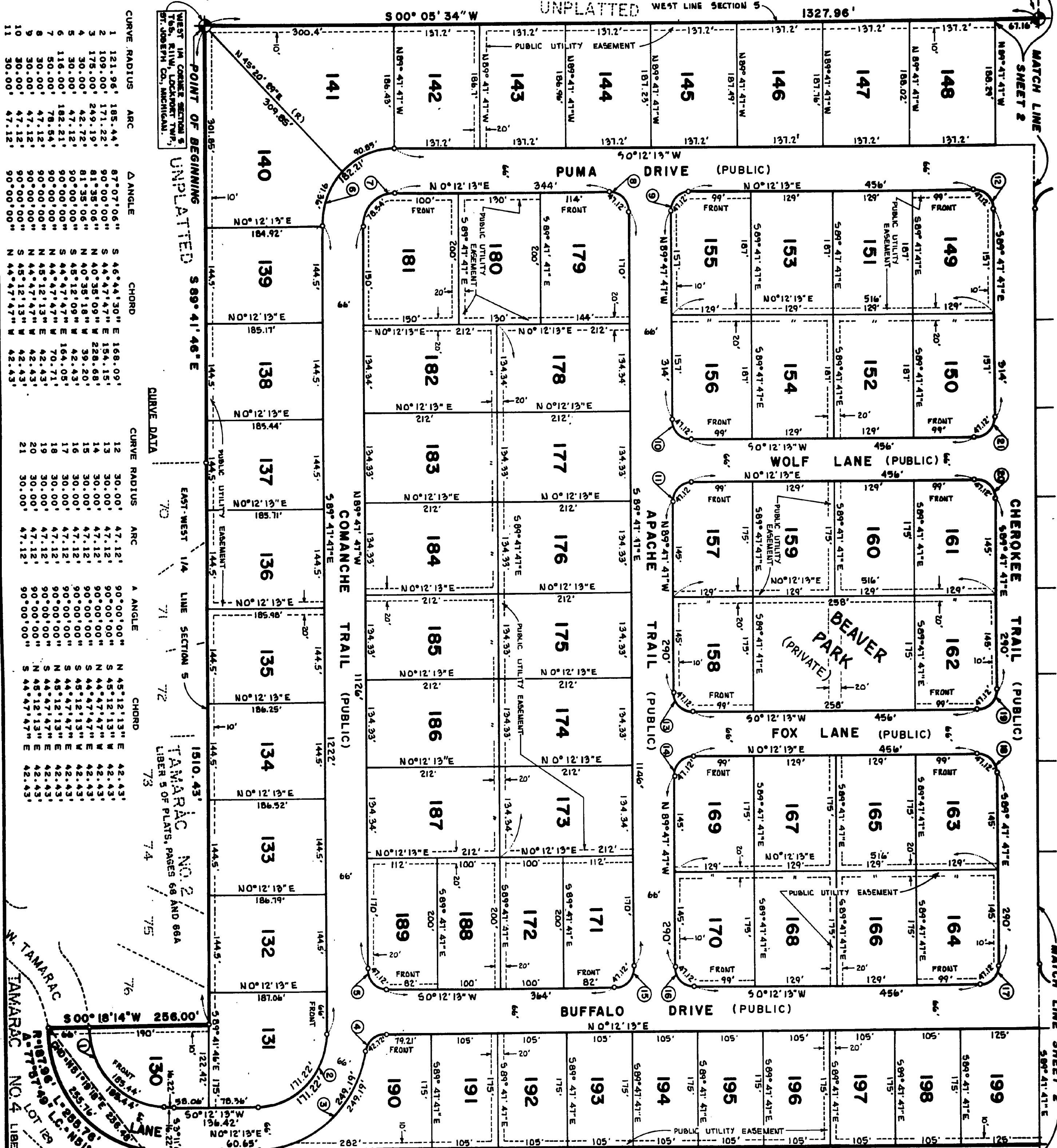
CENTER SECTION 5, T6S, R11W, LOCKPORT TWP., ST. JOSEPH CO., MI.

All Utility Easement Agmt. X.555 p. 69 between Lots 135-148

TAMARAC NO. 5

A SUBDIVISION SITUATED IN THE NW 1/4 AND THE SW 1/4 OF SECTION 5, TOWN 6 SOUTH, RANGE II WEST, LOCKPORT TOWNSHIP, ST. JOSEPH COUNTY, MICHIGAN.

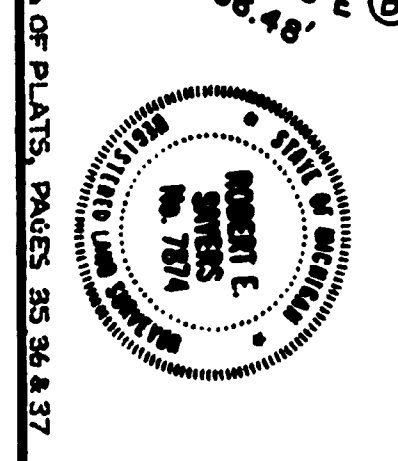
NW CORNER SW 1/4 OF NW 1/4, SECTION 5, T6S, R11W, LOCKPORT TWP., ST. JOSEPH CO., MICHIGAN.



CURVE RADIUS	ARC	Δ ANGLE	CHORD
1 121.96'	185.44'	87°07'06"	S 46°44'30" E 158.09'
2 109.00'	171.22'	90°00'00"	S 44°47'47" E 154.15'
3 179.00'	249.19'	81°35'06"	N 40°38'09" W 228.68'
4 30.00'	42.72'	81°35'06"	N 40°38'16" W 39.20'
5 30.00'	42.72'	90°00'00"	S 45°12'09" W 42.43'
6 116.00'	182.21'	90°00'00"	S 44°47'47" W 164.05'
7 50.00'	78.54'	90°00'00"	N 44°47'47" W 70.71'
8 30.00'	47.12'	90°00'00"	N 48°12'13" W 42.43'
9 30.00'	47.12'	90°00'00"	N 48°12'13" W 42.43'
10 30.00'	47.12'	90°00'00"	S 45°12'13" W 42.43'
11 30.00'	47.12'	90°00'00"	N 44°47'47" W 42.43'

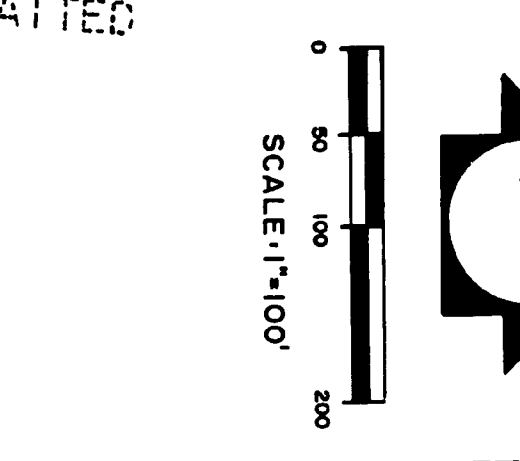
CURVE RADIUS	ARC	Δ ANGLE	CHORD
12 30.00'	47.12'	90°00'00"	S 45°12'13" E 42.43'
13 30.00'	47.12'	90°00'00"	S 45°12'13" W 42.43'
14 30.00'	47.12'	90°00'00"	N 44°47'47" W 42.43'
15 30.00'	47.12'	90°00'00"	S 45°12'13" W 42.43'
16 30.00'	47.12'	90°00'00"	S 45°12'13" W 42.43'
17 30.00'	47.12'	90°00'00"	S 45°12'13" W 42.43'
18 30.00'	47.12'	90°00'00"	S 45°12'13" W 42.43'
19 30.00'	47.12'	90°00'00"	N 44°47'47" W 42.43'
20 30.00'	47.12'	90°00'00"	N 48°12'13" W 42.43'
21 30.00'	47.12'	90°00'00"	S 44°47'47" E 42.43'

POINT OF BEGINNING UNPLATTED 5 89° 41' 46" E
 EAST-WEST 1/4 LINE SECTION 5
 TAMARAC NO. 2
 LIBER 5 OF PLATS, PAGES 68 AND 86A



THIS PLAT IS SUBJECT TO RESTRICTIONS AS REQUIRED BY ACT 288 OF 1967, AS AMENDED, ON CERTAIN LOTS WITH RESPECT TO THE REQUIREMENTS OF THE MICHIGAN DEPARTMENT OF PUBLIC HEALTH, WHICH ARE RECORDED IN LIBER 114, PAGE 177 OF RECORDS OF THIS COUNTY.

- LEGEND
1. ALL DIMENSIONS ARE IN FEET.
 2. ALL CURVE DIMENSIONS ARE ARC DIMENSIONS.
 3. CONCRETE MONUMENTS HAVE BEEN PLACED AT ALL POINTS MARKED 0.
 4. LOT CORNERS HAVE BEEN MARKED BY A 1/2 INCH IRON BAR.
 5. BEARINGS WERE ESTABLISHED FROM THE RECORDED PLAT OF RICK'S MANOR, LIBER 3 OF PLATS, PAGE 70.
 6. (R) = RADIAL LOT LINES



VICINITY MAP (NO SCALE)

SCALE: 1"=100'

TAMARAC NO. 5

A SUBDIVISION SITUATED IN THE NW 1/4 AND THE SW 1/4 OF SECTION 5,
TOWN 6 SOUTH, RANGE 11 WEST, LOCKPORT TOWNSHIP, ST. JOSEPH COUNTY, MICHIGAN.

SURVEYOR'S CERTIFICATE

I, ROBERT E. SAYERS, SURVEYOR, CERTIFY THAT I HAVE SURVEYED, DIVIDED, AND MAPPED THE LAND SHOWN ON THIS PLAT, DESCRIBED AS FOLLOWS: TAMARAC NO. 5, A SUBDIVISION SITUATED IN THE NW 1/4 AND THE SW 1/4 OF SECTION 5, TOWN 6 SOUTH, RANGE 11 WEST, LOCKPORT TOWNSHIP, ST. JOSEPH COUNTY, MICHIGAN, ALSO BEING A REPLAT OF A PORTION OF LOT 129 OF THE PLAT OF TAMARAC NO. 4, A SUBDIVISION SITUATED IN THE EAST 3/4 OF THE SW 1/4 OF SECTION 5, TOWN 6 SOUTH, RANGE 11 WEST, LOCKPORT TOWNSHIP, ST. JOSEPH COUNTY, MICHIGAN, AND RECORDED IN LIBER 6 OF PLATS ON PAGES 37, 35, AND 36 IS DESCRIBED AS FOLLOWS: COMMENCING AT THE WEST 1/4 CORNER OF SAID SECTION 5 WHICH IS ALSO THE POINT OF BEGINNING OF THIS DESCRIPTION AND RUNNING THENCE S 89°41'46" E, ALONG THE EAST-WEST 1/4 LINE OF SAID SECTION, 1510.43 FEET TO THE NE CORNER OF TAMARAC NO. 2, A PLAT RECORDED IN LIBER 5 OF PLATS ON PAGES 66 AND 66-A, THENCE S 0°18'14" W, ALONG THE EASTERLY LINE OF SAID PLAT, 256.00 FEET TO ITS INTERSECTION WITH THE PLAT OF TAMARAC NO. 4, A PLAT RECORDED IN LIBER 6 OF PLATS ON PAGES 37, 35, AND 36, THENCE NORTHEASTERLY, FOLLOWING THE NORTHWESTERLY LINE OF LOT 129 OF SAID PLAT OF TAMARAC NO. 4, ALONG A 187.96 FOOT RADIUS CURVE TO THE LEFT, WHICH IS SUBTENDED BY A CHORD BEARING N 51°19'18" E 236.48 FEET, AN ARC DISTANCE OF 255.76 FEET TO THE P.C. OF A 33.90 FOOT RADIUS CURVE TO THE RIGHT, THENCE NORTHEASTERLY ALONG SAID CURVE, WHICH IS SUBTENDED BY A CHORD BEARING N 48°59'12" E 45.13 FEET, AN ARC DISTANCE OF 48.54 FEET TO THE P.T. OF SAID CURVE, THENCE N 89°47'06" E 844.81 FEET TO THE P.C. OF A 30.00 FOOT RADIUS CURVE TO THE RIGHT, THENCE SOUTHEASTERLY ALONG SAID CURVE, WHICH IS SUBTENDED BY A CHORD BEARING S 45°07'40" E 42.49 FEET, AN ARC DISTANCE OF 47.21 FEET TO THE P.T. OF SAID CURVE, THENCE N 89°57'30" E 33.00 FEET TO THE NORTH-SOUTH 1/4 LINE OF SAID SECTION 5, THENCE N 0°02'30" W 99.19 FEET TO THE CENTER OF SAID SECTION 5, THENCE N 89°41'46" W, ALONG THE EAST-WEST 1/4 LINE OF SAID SECTION, 333.00 FEET, THENCE S 0°12'54" E 6.01 FEET, THENCE S 89°47'06" W 574.02 FEET TO THE P.C. OF A 30.00 FOOT RADIUS CURVE TO THE RIGHT, THENCE NORTHWESTERLY ALONG SAID CURVE, WHICH IS SUBTENDED BY A CHORD BEARING N 45°00'20" W 42.58 FEET, AN ARC DISTANCE OF 47.34 FEET TO THE P.T. OF SAID CURVE, THENCE N 0°12'13" E 1967.15 FEET, THENCE N 89°47'47" W, ALONG THE NORTH LINE OF THE SOUTH 1/2 OF THE NORTH 1/2 OF THE NW 1/4 OF SAID SECTION 5, 681.00 FEET, THENCE S 00°12'13" W 163.50 FEET, THENCE N 89°47'47" W 66.00 FEET, THENCE N 0°12'13" E 163.50 FEET, THENCE N 89°47'47" W 961.39 FEET TO THE WEST LINE OF THE NW 1/4 OF SAID SECTION 5, THENCE S 0°24'33" E 653.95 FEET TO A STONE FOUND FOR THE NW CORNER OF THE SW 1/4 OF THE NW 1/4 OF SAID SECTION 5, THENCE S 0°05'34" W 1327.96 FEET TO THE POINT OF BEGINNING AND POINT OF ENDING OF THIS DESCRIPTION;

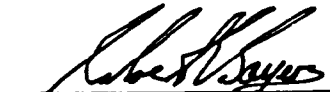
THIS DESCRIPTION CONTAINS 106 NUMBERED LOTS AND 1 PRIVATE PARK; THAT I HAVE MADE SUCH SURVEY, LAND DIVISION, AND PLAT BY THE DIRECTION OF THE LAND OWNERS OF SUCH LAND; THAT SUCH PLAT IS A CORRECT REPRESENTATION OF ALL EXTERIOR BOUNDARIES OF THE LAND SURVEYED AND THE SUBDIVISION OF IT; THAT THE REQUIRED MONUMENTS AND LOT MARKERS HAVE BEEN LOCATED IN THE GROUND AS REQUIRED BY SECTION 125 OF THE ACT; THAT THE ACCURACY OF THE SURVEY IS WITHIN THE LIMITS REQUIRED BY SECTION 126 OF THE ACT; THAT THE BEARINGS SHOWN ON THE PLAT ARE EXPRESSED AS REQUIRED BY SECTION 126(3) OF THE ACT AND AS EXPLAINED IN THE LEGEND.

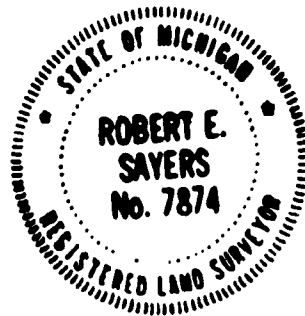
THIS PLAT CONTAINS 79.511 ACRES, MORE OR LESS.

MARCH 31, 1979

DATE

SAYERS & ASSOCIATES
P.O. BOX 212
STURGIS, MICHIGAN 49091



ROBERT E. SAYERS, PRESIDENT
R.L.S. NO. 7874



PROPRIETOR'S CERTIFICATE - CORPORATION

THE IROQUOIS DEVELOPMENT CORPORATION, A CORPORATION DULY ORGANIZED UNDER THE LAWS OF THE STATE OF MICHIGAN BY NORMAN J. RIVERS, VICE PRESIDENT, AND RICHARD D. VERHEUL, VICE-PRESIDENT, AS PROPRIETOR, HAS CAUSED THE LAND EMBRACED IN THIS PLAT TO BE SURVEYED, DIVIDED, MAPPED, AND DEDICATED AS REPRESENTED IN THIS PLAT AND THAT THE STREETS SHOWN ON THIS PLAT ARE FOR THE USE OF THE PUBLIC; THAT THE PUBLIC UTILITY EASEMENTS ARE PRIVATE EASEMENTS AND THAT ALL OTHER EASEMENTS ARE FOR THE USES SHOWN ON THE PLAT; THAT BEAVER PARK IS A PRIVATE PARK AND INTENDED FOR THE USE OF THE LOT OWNERS OF THE PLATS OF TAMARAC, TAMARAC NO. 2, TAMARAC NO. 3, TAMARAC NO. 4, TAMARAC NO. 5, AND ANY FUTURE "TAMARAC PLATS" FALLING IN SECTION 5, T 6 S, R 11 W, MICHIGAN.

IROQUOIS DEVELOPMENT CORPORATION
P.O. BOX 129
THREE RIVERS, MICHIGAN 49093


R. E. SAYERS, WITNESS


NORMAN J. RIVERS, VICE-PRESIDENT


NANCY C. FISHER, WITNESS


RICHARD D. VERHEUL, VICE-PRESIDENT

ACKNOWLEDGEMENT

STATE OF MICHIGAN SS
ST. JOSEPH COUNTY

PERSONALLY CAME BEFORE ME THIS 2nd DAY OF April, 1979, NORMAN J. RIVERS, VICE-PRESIDENT, AND RICHARD D. VERHEUL, VICE-PRESIDENT, OF THE ABOVE NAMED CORPORATION, TO ME KNOWN TO BE THE PERSONS WHO EXECUTED THE FOREGOING INSTRUMENT, AND TO ME KNOWN TO BE SUCH VICE-PRESIDENTS OF SAID CORPORATION, AND ACKNOWLEDGED THAT THEY EXECUTED THE FOREGOING INSTRUMENT AS SUCH OFFICERS AS THE FREE ACT AND DEED OF SAID CORPORATION, BY ITS AUTHORITY.

NOTARY PUBLIC Nancy C. Fisher, St. Joseph COUNTY, MICHIGAN.

NANCY C. FISHER, ST. JOSEPH

MY COMMISSION EXPIRES July 18, 1982.

THIS PLAT IS SUBJECT TO RESTRICTIONS AS REQUIRED BY ACT 288 OF 1967, AS AMENDED, ON CERTAIN LOTS WITH RESPECT TO THE REQUIREMENTS OF THE MICHIGAN DEPARTMENT OF PUBLIC HEALTH, WHICH ARE RECORDED IN LIBER 443; PAGE 47, OF RECORDS OF THIS COUNTY.

TAMARAC NO. 5

A SUBDIVISION SITUATED IN THE NW 1/4 AND THE SW 1/4 OF SECTION 5,
TOWN 6 SOUTH, RANGE 11 WEST, LOCKPORT TOWNSHIP, ST. JOSEPH COUNTY, MICHIGAN.

COUNTY TREASURER'S CERTIFICATE

THE RECORDS IN MY OFFICE SHOW NO UNPAID TAXES OR SPECIAL ASSESSMENTS FOR THE FIVE YEARS PRECEDING April 3, 19 79, INVOLVING LANDS INCLUDED IN THIS PLAT.

Martha A. Wickey
MARTHA A. WICKEY, ST. JOSEPH COUNTY TREASURER

DRAIN COMMISSIONER'S CERTIFICATE

APPROVED ON April 3, 19 79, AS COMPLYING WITH SECTION 192 OF ACT 288, P.A. 1967, AND THE APPLICABLE RULES AND REGULATIONS PUBLISHED BY MY OFFICE IN THE COUNTY OF ST. JOSEPH.

Lloyd S. Culp
LLOYD S. CULP, DRAIN COMMISSIONER

CERTIFICATE OF COUNTY ROAD COMMISSIONERS

APPROVED ON APRIL 5, 19 79, AS COMPLYING WITH SECTION 183 OF ACT 288, P.A. 1967, AND THE APPLICABLE PUBLISHED RULES AND REGULATIONS OF THE BOARD OF COUNTY ROAD COMMISSIONERS OF ST. JOSEPH COUNTY.

D.W. Arney
D.W. ARNEY, CHAIRMAN

Carl L. Roberts
CARL L. ROBERTS, MEMBER

Frank Shellenbarger
FRANK SHELLENBARGER, MEMBER

CERTIFICATE OF MUNICIPAL APPROVAL

I CERTIFY THAT THIS PLAT WAS APPROVED BY THE TOWNSHIP BOARD OF THE TOWNSHIP OF LOCKPORT AT A MEETING HELD April 10, 19 79, AND WAS REVIEWED AND FOUND TO BE IN COMPLIANCE WITH ACT 288, P.A. 1967. THIS PLAT WAS APPROVED ON March 20, 19 79, BY THE ST. JOSEPH COUNTY HEALTH DEPARTMENT, AND AMENDED APRIL 2, 1979

John I. Major
JOHN I. MAJOR, CLERK

RESTRICTION CERTIFICATE

THIS PLAT IS SUBJECT TO RESTRICTIONS AS REQUIRED BY ACT 288 OF 1967, AS AMENDED, ON CERTAIN LOTS WITH RESPECT TO THE REQUIREMENTS OF THE MICHIGAN DEPARTMENT OF PUBLIC HEALTH, WHICH ARE RECORDED IN LIBER 443, PAGE 47, OF RECORDS OF THIS COUNTY.

COUNTY PLAT BOARD CERTIFICATE

THIS PLAT HAS BEEN REVIEWED AND IS APPROVED BY THE ST. JOSEPH COUNTY PLAT BOARD ON April 11, 19 79, AS BEING IN COMPLIANCE WITH ALL OF THE PROVISIONS OF ACT 288, P.A. 1967, AND THE PLAT BOARD'S APPLICABLE RULES AND REGULATIONS.

Patricia L. Van Emon
PATRICIA L. VAN EMON, REGISTER OF DEEDS

Martha A. Wickey
MARTHA A. WICKEY, COUNTY TREASURER

Beverly J. Burnham
BEVERLY J. BURNHAM, COUNTY CLERK

RECORDING CERTIFICATE

THIS PLAT WAS RECEIVED FOR RECORD ON THE 18th DAY OF May, 19 79, AT 11:41 A.M. AND RECORDED IN LIBER 6 ON PAGE 42, 43, 44, 45.

Patricia L. Van Emon
PATRICIA L. VAN EMON, REGISTER OF DEEDS

EXAMINED AND APPROVED

Date May 17, 1979

Loren E. Monroe

LOREN E. MONROE
STATE TREASURER

By Richard E. Lomax
Richard E. Lomax, Plat Examiner

