

# SUPERVISORS PLAT NO. 1 OF LOCKPORT TOWNSHIP

IN THE NORTHEAST FRACTIONAL QUARTER OF SECTION 3,  
TOWN 6 SOUTH, RANGE 11 WEST, LOCKPORT TOWNSHIP,  
ST. JOSEPH COUNTY, MICHIGAN.

REGISTER'S OFFICE,  
COUNTY OF ST. JOSEPH,  
STATE OF MICHIGAN.

Received for Record, this 7<sup>th</sup>  
day of July, A. D. 1952  
at 10:30 o'clock A.M. and Recorded  
in Vol. 3 of Plats  
at Page 11  
Eleanor C. Russell  
Register of Deeds.

## CERTIFICATE OF APPROVAL BY COUNTY PLAT BOARD:

This plat was approved on the 26<sup>th</sup> day of May, 1952.

Eleanor C. Russell  
Eleanor C. Russell, Register of Deeds  
John W. Marvin  
John W. Marvin, County Clerk  
Eva M. Brumbaugh  
Eva M. Brumbaugh, County Treasurer  
Earl Luce  
Earl Luce, Drain Commissioner

## DESCRIPTION:

The description of Supervisor's Plat No. 1 of Lockport Township in the northeast fractional quarter of Section 3, Town 6 South, Range 11 West, Lockport Township, St. Joseph County, Michigan, is as follows: Beginning on the north line of said Section 3 at the northwest corner of Lot 1 of Crescent Beach, which point is 1307.7 feet east of the north quarter post of said Section and running thence  
South 51 degrees 17 minutes west 507.7 feet, thence  
South 34 degrees 35 minutes west 215.4 feet, thence  
South 22 degrees 24 minutes west 212.85 feet, thence  
South 2 degrees 40 minutes east 231.15 feet, thence  
South 34 degrees 51 minutes east 79.2 feet, thence  
South 46 degrees 41 minutes east 324.7 feet, thence  
South 62 degrees 34 minutes east 464.0 feet, thence  
South 71 degrees 24 minutes east 106.22 feet, thence  
South 23 degrees 55 minutes west 133.96 feet, thence  
South 71 degrees 24 minutes east 21.1 feet, thence  
South 88 degrees 9 minutes east 1143.56 feet, to the westerly edge of the M-60 highway (which is 120 feet wide), thence along said highway  
South 0 degrees 18 minutes west 40.0 feet, thence  
North 86 degrees 9 minutes west 1150.52 feet, thence  
North 71 degrees 24 minutes west 144.6 feet, thence  
North 62 degrees 34 minutes west 837.04 feet, thence  
North 2 degrees 40 minutes west 528.7 feet, thence  
North 22 degrees 24 minutes east 256.87 feet, thence  
North 34 degrees 35 minutes east 250.89 feet, thence  
North 51 degrees 17 minutes east 353.65 feet, thence  
East 223.83 feet to Beginning, being a part of the northeast fractional quarter of said Section 3 and including that part of Crescent Beach occupied by Crescent Drive which has been abandoned.

## DEDICATION:

Know all men by these presents, that I, Lester R. Schrader, Supervisor of Lockport Township, St. Joseph County, State of Michigan, by virtue of authority in me vested by Section 51, Act 172 of 1929, having been duly authorized by the Township Board, have caused the land embraced in the annexed plat to be surveyed, laid out and platted, to be known as Supervisor's Plat No. 1 of Lockport Township, in the northeast fractional quarter of Section 3, Town 6 South, Range 11 West, Lockport Township, St. Joseph County, Michigan, and that the Crescent Drive shown on said plat is now being used by the public.

Witnesses:

Warren W. Hosnel Lester R. Schrader (Seal)  
Warren W. Hosnel Lester R. Schrader,  
Supervisor of Lockport Township.

STATE OF MICHIGAN SS  
COUNTY OF ST. JOSEPH

On this 9<sup>th</sup> day of May, 1952, before me, a notary public in and for said county, personally appeared the above named Lester R. Schrader, Supervisor of Lockport Township, known to me to be the person who executed the above dedication and acknowledged the same to be his free act and deed as such supervisor.

Eleanor C. Russell  
Eleanor C. Russell  
Notary Public in and for  
St. Joseph County, Michigan.  
My commission expires June 11, 1954

## SURVEYOR'S CERTIFICATE:

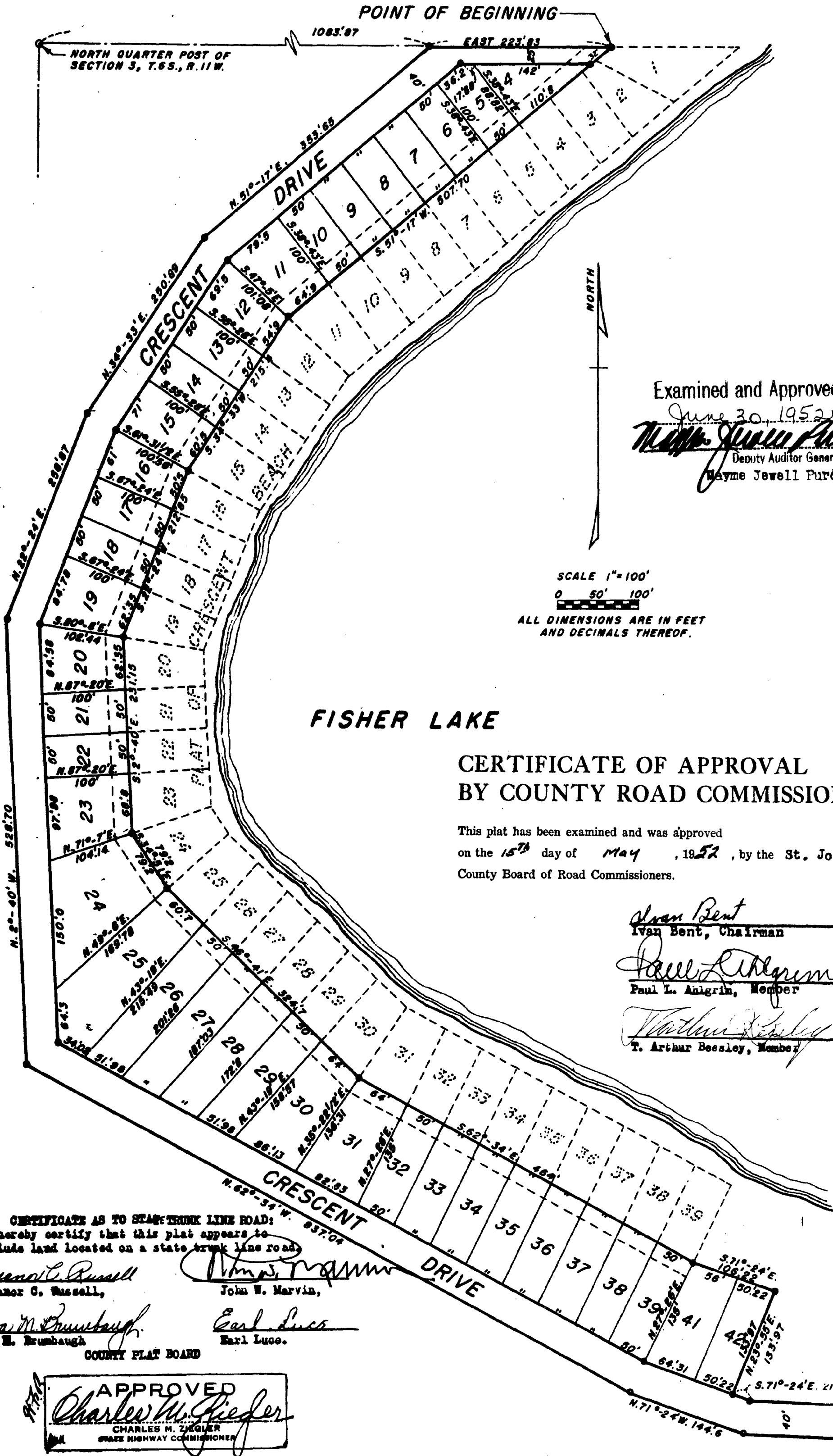
I hereby certify that the plat hereon delineated is a correct one and that permanent metal monuments consisting of bars not less than one-half inch in diameter and 48 inches in length, encased in a concrete cylinder at least four inches in diameter and 48 inches in depth, have been placed at all points marked thus: O as thereon shown at all angles in the boundaries of the land platted, at all intersections of streets and at the intersections of streets with the boundaries of the plat as shown on said plat.

Wenley Q. Smith  
Wenley Q. Smith,  
Registered Land Surveyor.

## CERTIFICATE OF MUNICIPAL APPROVAL:

This plat was approved by the Township Board of the Township of Lockport at a meeting held May 9, 1952.

Louis Haldy  
Louis Haldy, Clerk.



Examined and Approved

June 30, 1952  
Wayne Jewell Purdy  
Deputy Auditor General  
Wayne Jewell Purdy

SCALE 1"=100'  
0 50' 100'  
ALL DIMENSIONS ARE IN FEET  
AND DECIMALS THEREOF.

## CERTIFICATE OF APPROVAL BY COUNTY ROAD COMMISSION:

This plat has been examined and was approved  
on the 15<sup>th</sup> day of May, 1952, by the St. Joseph  
County Board of Road Commissioners.

Ivan Bent  
Ivan Bent, Chairman  
Paul L. Anigrin  
Paul L. Anigrin, Member  
T. Arthur Beasley  
T. Arthur Beasley, Member

CERTIFICATE AS TO STATE TRUNK LINE ROAD:  
We hereby certify that this plat appears to  
include land located on a state trunk line road.  
Eleanor C. Russell  
Eleanor C. Russell,  
John W. Marvin  
John W. Marvin,  
Eva M. Brumbaugh  
Eva M. Brumbaugh,  
Earl Luce  
Earl Luce,  
COUNTY PLAT BOARD

APPROVED  
Charles M. Gieffer  
CHARLES M. GIEFFER  
STATE HIGHWAY COMMISSIONER

