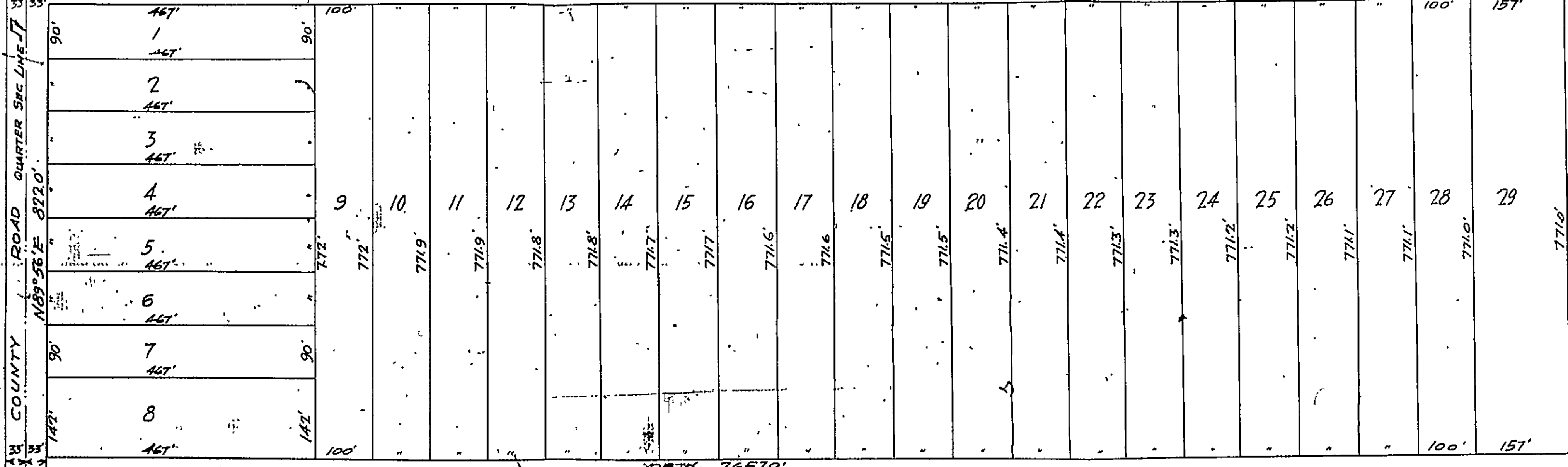


MONUMENT - CENTER POST
SEC 9 T6S R11W

SOUTH 2657.0'

STREET 50 FT. WIDE



ROAD QUARTER SEC LINE JJ
N 89° 56' E 822.0'

SEC. LINE JJ

S. 89° 56' W. 822.0'



ST. JOE ACRES No 5
 A PART OF THE NORTHEAST QUARTER
 OF SECTION 9 T6S R11W LOCKPORT TWP
 ST JOSEPH COUNTY MICHIGAN
 INTERSTATE FARM BUREAU INC.
 35 SOUTH DEARBORN ST. CHICAGO ILLS
 SCALE 1"=100' SEPT. 11, 1943.