

# CHERRY LANE

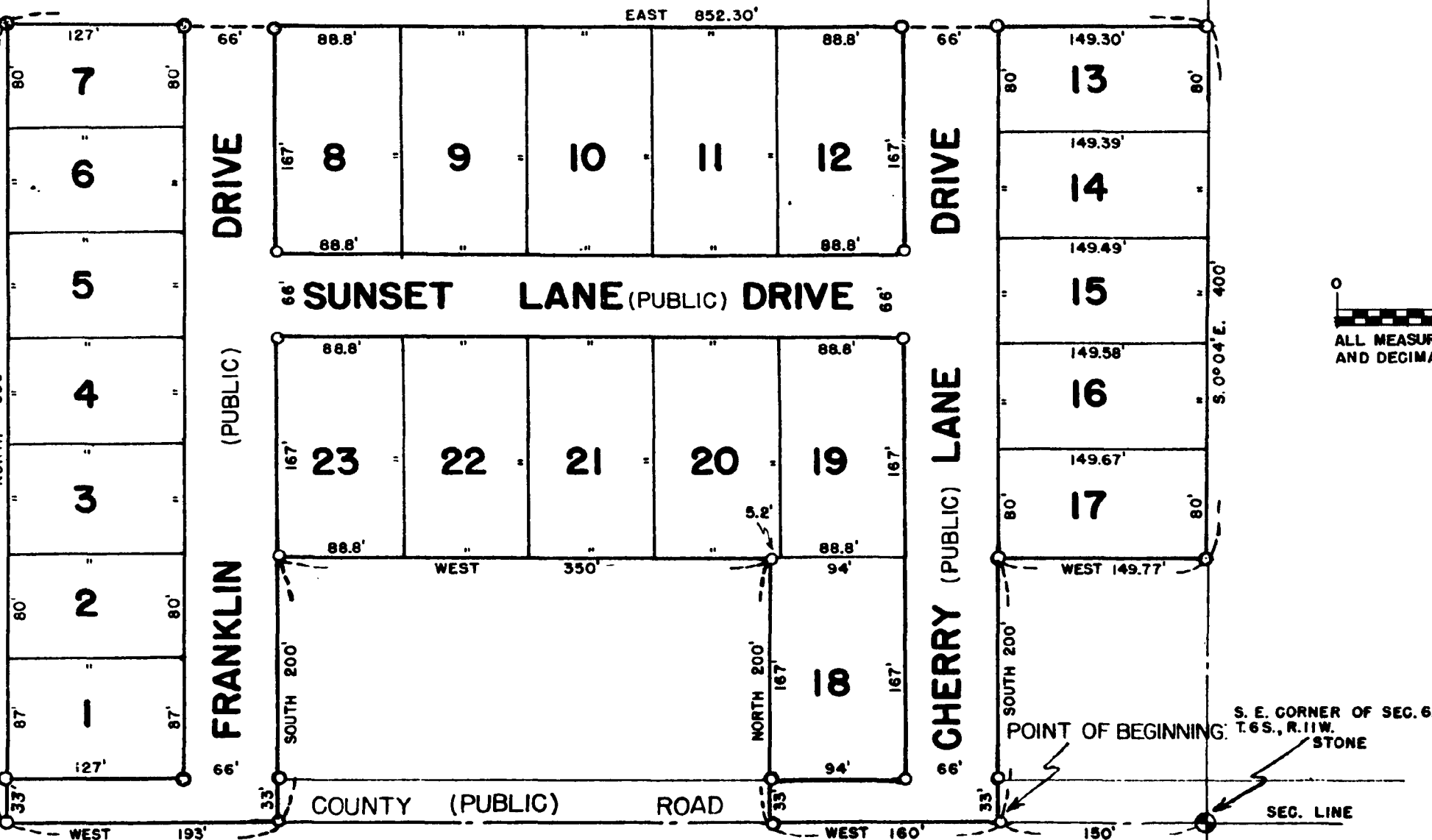
A SUBDIVISION IN THE S. E. 1/4, OF THE S. E. 1/4 SECTION 6, T.6S., R.11W., TOWNSHIP OF LOCKPORT, COUNTY OF ST. JOSEPH, MICHIGAN

EXAMINED AND APPROVED  
Date JUN 20 1955

*Victor Targowski*

Victor Targowski,  
AUDITOR GENERAL

By *J. J. MacCreary*  
Plat Engineer



**DEDICATION**

KNOW ALL MEN BY THESE PRESENTS, that we, Gerald A. Franklin and Orleatha K. Franklin, husband and wife, as proprietors, have caused the land embraced in the annexed plat to be surveyed, laid out and platted, to be known as "Cherry Lane" a subdivision in the Southeast 1/4, of the Southeast 1/4, Section 6, T.6 S., R.11 W., Township of Lockport, County of St. Joseph, Michigan, and that the Drives as shown on said plat are hereby dedicated to the use of the public.

Signed and Sealed in the Presence of:  
*Jay R. White* (Witness) *Gerald A. Franklin* (L.S.)  
*Margaret J. White* (Witness) *Orleatha K. Franklin* (L.S.)

**ACKNOWLEDGMENT**

STATE OF MICHIGAN  
 County of St. Joseph  
 On this 21st day of March, 1955, before me, a Notary Public in and for said County, personally came the above named Gerald A. Franklin and Orleatha, husband and wife, as proprietors known to me to be the persons who executed the above dedication, and acknowledged the same to be their free act and deed.

*George D. Bradford*  
 George D. Bradford  
 Notary Public, St. Joseph County  
 My Commission expires 2/8/56

**DESCRIPTION OF LAND PLATTED**

The land embraced in the annexed plat of "CHERRY LANE" a subdivision in the Southeast 1/4, of the Southeast 1/4, Section 6, T.6 S., R.11 W., Township of Lockport, County of St. Joseph, Michigan is described as follows: Beginning at a point on Section line 150 feet west of the Southeast corner of said Section 6 and running thence West 160 feet; thence North 200 feet; thence West 350 feet; thence South 200 feet; thence West 193 feet; thence North 600 feet; thence East 852.30 feet; thence South 0 degrees 04 minutes East 400 feet; thence West 149.77 feet; thence South 200 feet to beginning. THIS SUBDIVISION CONTAINS 23 LOTS.

**SURVEYOR'S CERTIFICATE**

I hereby certify that the plat hereon delineated is a correct one and that permanent metal monuments consisting of bars not less than one-half inch in diameter and 48 inches in length, or shorter bars of not less than one-half inch in diameter lapped over each other at least 6 inches with an over-all length of not less than 48 inches, encased in a concrete cylinder at least 4 inches in diameter and 48 inches in depth have been placed at points marked thus (O) as thereon shown at all angles in the boundaries of the land platted, at all the intersections of streets, intersections of alleys, or of streets and alleys, and at the intersections of streets and alleys with the boundaries of the plat as shown on said plat.

*Earl N. James*  
 Earl N. James  
 Registered Professional Engineer

**MUNICIPAL APPROVAL**

This plat was approved by the Township Board of the Township of Lockport at a meeting held March 21, 1955.

*Louis Baldy*  
 Louis Baldy (Clerk)

**APPROVAL BY COUNTY PLAT BOARD**

This plat was approved on the 7th day of June, 1955 by the St. Joseph County Plat Board

*Donna E. Donmyer* (County Register of Deeds)  
*John W. Marvin* (County Clerk)  
*Irene Hibbard* (County Treasurer)  
*Richard K. Olin* (County Drain Commissioner)

**COUNTY TREASURER'S CERTIFICATE**

Office of County Treasurer, St. Joseph County.  
 I hereby certify, that there are no tax liens or titles held by the State on the lands described herein, and that there are no tax liens or titles held by individuals on said lands, for the five years preceding the 3rd day of June, 1955, and that the taxes for said period of five years are all paid, as shown by the records of this office.

This certificate does not apply to taxes, if any, now in process of collection by township, city or village collecting officers.

*Irene Hibbard* (County Treasurer)

**APPROVAL BY BOARD OF COUNTY ROAD COMMISSIONERS**

This plat has been examined and was approved on the 21st day of June, 1955 by the St. Joseph County Board of Road Commissioners.

*Paul L. Ahlgrim* (Chairman)  
*Ivan Bent* (Member)  
*Noyes T. Percy* (Member)

**REGISTER'S OFFICE, COUNTY OF ST. JOSEPH, STATE OF MICHIGAN**

Received for Record, this 22nd day of June, A. D. 1955 at 9:00 o'clock A. M., and Recorded in Vol. 3 of Plats on Page 56

*Donna E. Donmyer*  
 Reg. Sec. of Deeds