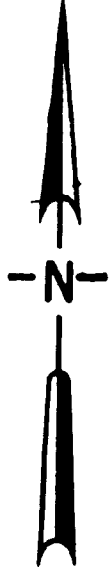


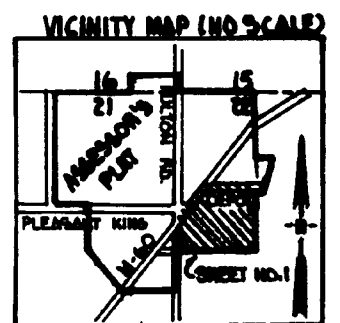
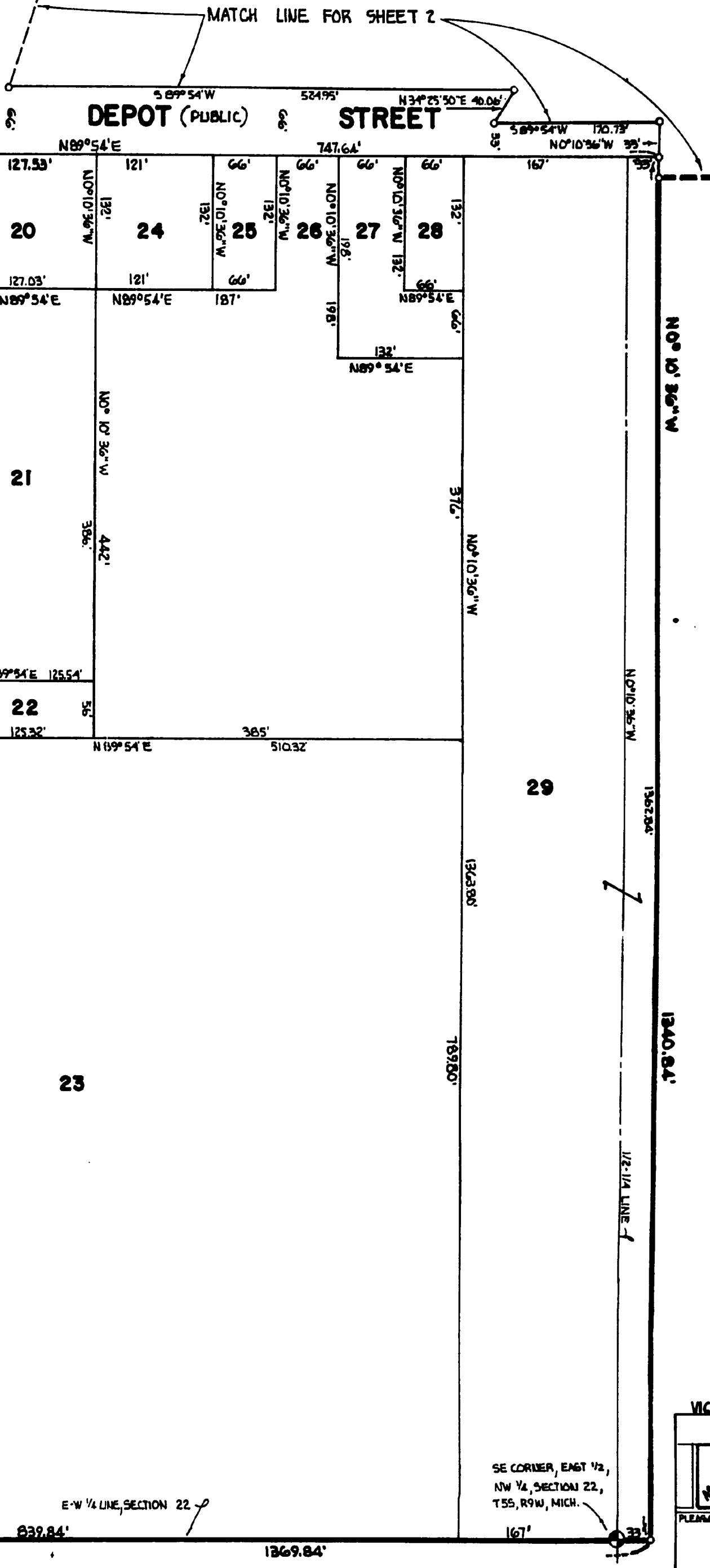
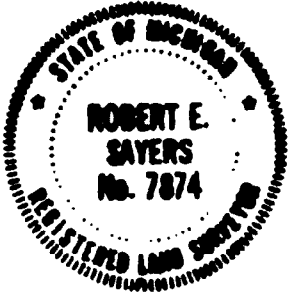
ASSESSOR'S PLAT OF LEONIDAS

SITUATED IN THE EAST 1/2 OF SECTIONS 16, 21 & THE NW 1/4 OF SECTION 22, T5S, R9W, LEONIDAS TOWNSHIP, ST. JOSEPH COUNTY, MICHIGAN

LEGEND
 PLAT BEARINGS WERE ESTABLISHED BY THE CENTERLINE OF HIGHWAY M-60 AS SHOWN ON PLANS FOR STATE PROJECT F-230 (APPROVED FEBRUARY 19, 1963 MICHIGAN STATE HIGHWAY DEPARTMENT.
 ALL DIMENSIONS ARE IN FEET.
 4" CONCRETE MONUMENTS ARE AT ALL POINTS MARKED THUS O.
 ALL LOT CORNERS ARE MARKED BY A 1/2 X 1 1/2" SOLID IRON BAR.



SCALE 1"=100 FEET



FULTON ROAD
 MATCH LINE FOR SHEET 1
 POINT OF BEGINNING

WEST 1/4 CORNER, SECTION 22, T5S, R9W, MICHIGAN

N 89° 35' 20" E 839.84' 1369.84'

E-W 1/4 LINE, SECTION 22

SE CORNER, EAST 1/2, NW 1/4, SECTION 22, T5S, R9W, MICH.

UNPLATTED

UNPLATTED

MATCH LINE FOR SHEET 2

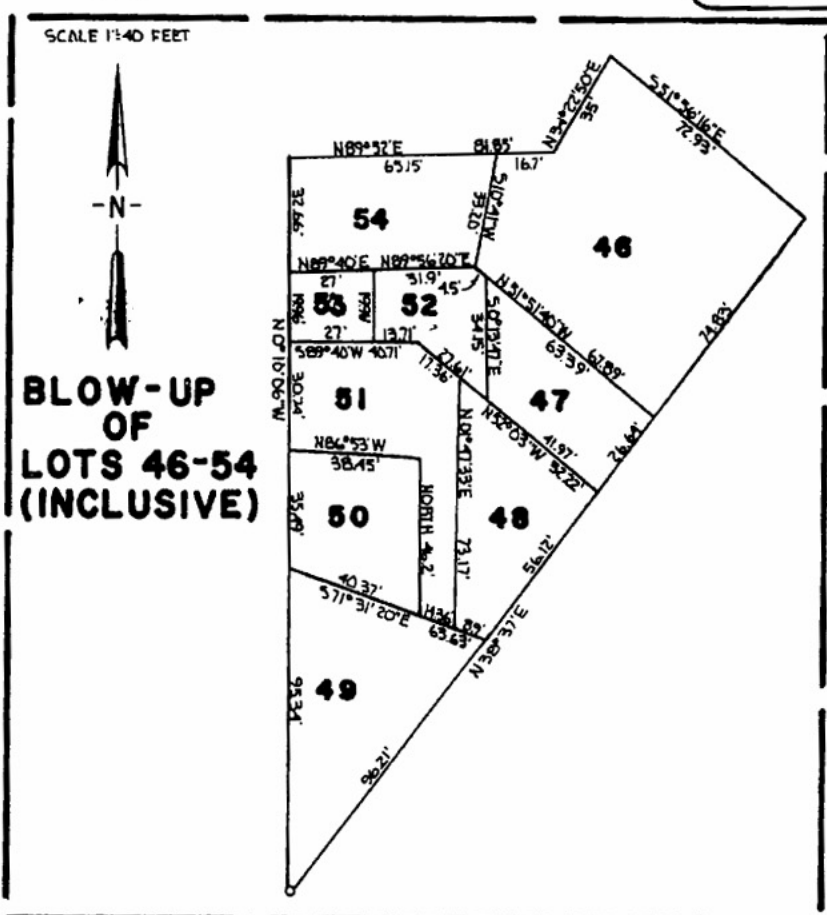
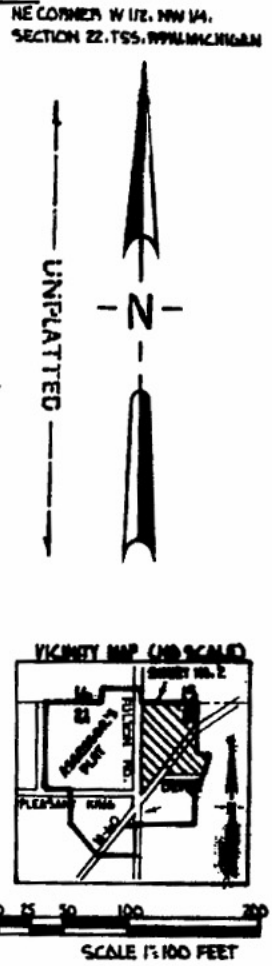
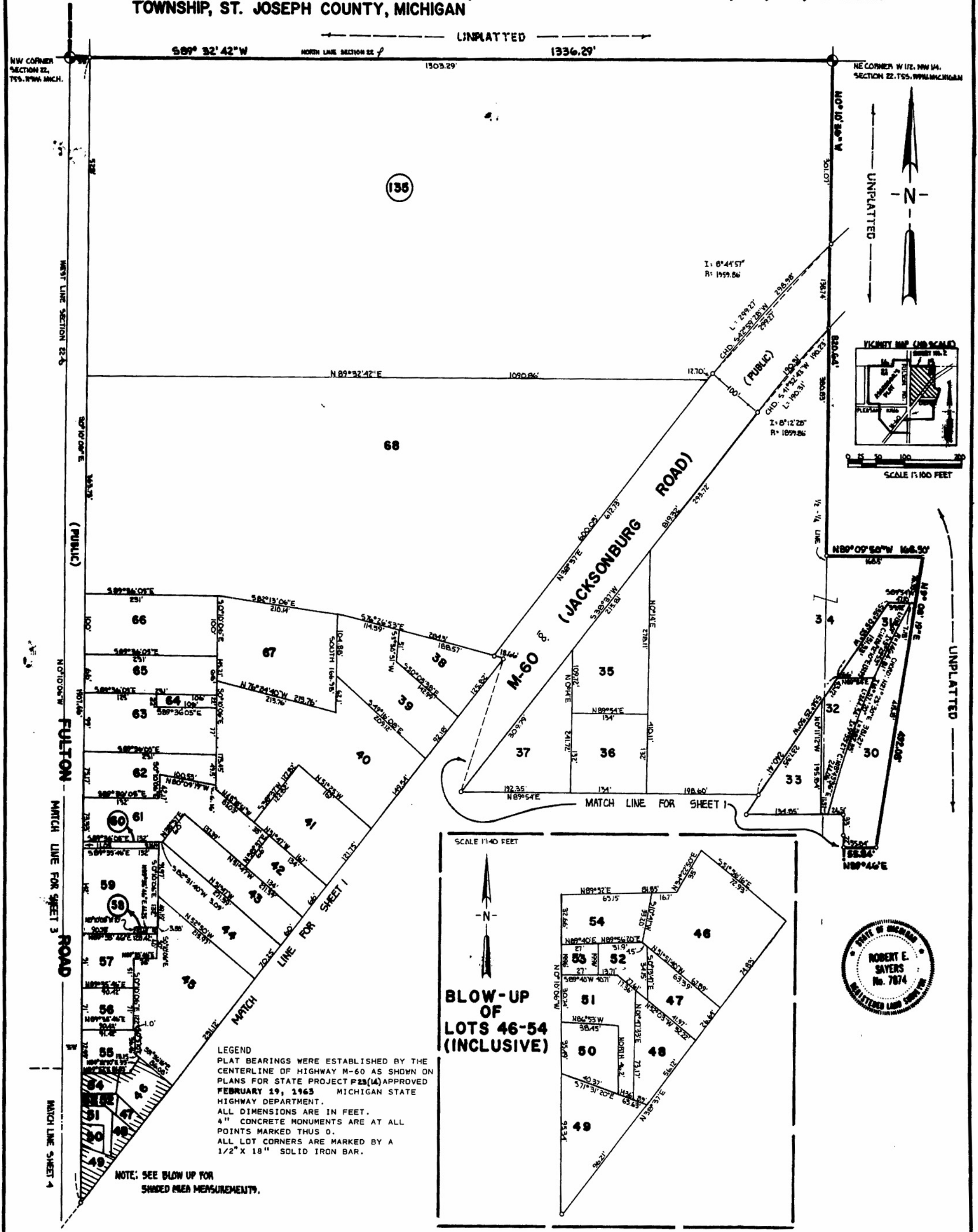
DEPOT (PUBLIC) STREET

MATCH LINE FOR SHEET 2
JACKSONBURG ROAD

M-60

ASSESSOR'S PLAT OF LEONIDAS

SITUATED IN THE EAST 1/2 OF SECTIONS 16, 21 & THE NW 1/4 OF SECTION 22, T5S, R9W, LEONIDAS TOWNSHIP, ST. JOSEPH COUNTY, MICHIGAN



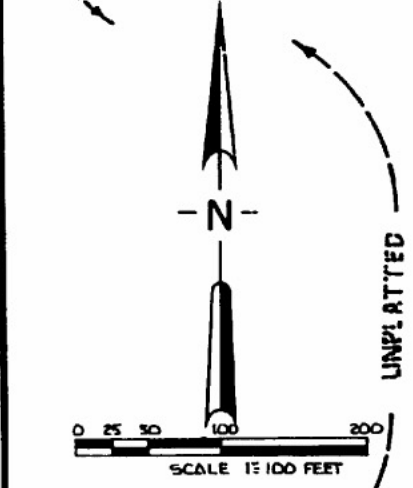
LEGEND
 PLAT BEARINGS WERE ESTABLISHED BY THE CENTERLINE OF HIGHWAY M-60 AS SHOWN ON PLANS FOR STATE PROJECT P23(14) APPROVED FEBRUARY 19, 1963 MICHIGAN STATE HIGHWAY DEPARTMENT.
 ALL DIMENSIONS ARE IN FEET.
 4" CONCRETE MONUMENTS ARE AT ALL POINTS MARKED THUS O.
 ALL LOT CORNERS ARE MARKED BY A 1/2" X 18" SOLID IRON BAR.

NOTE: SEE BLOW UP FOR SHADED AREA MEASUREMENTS.

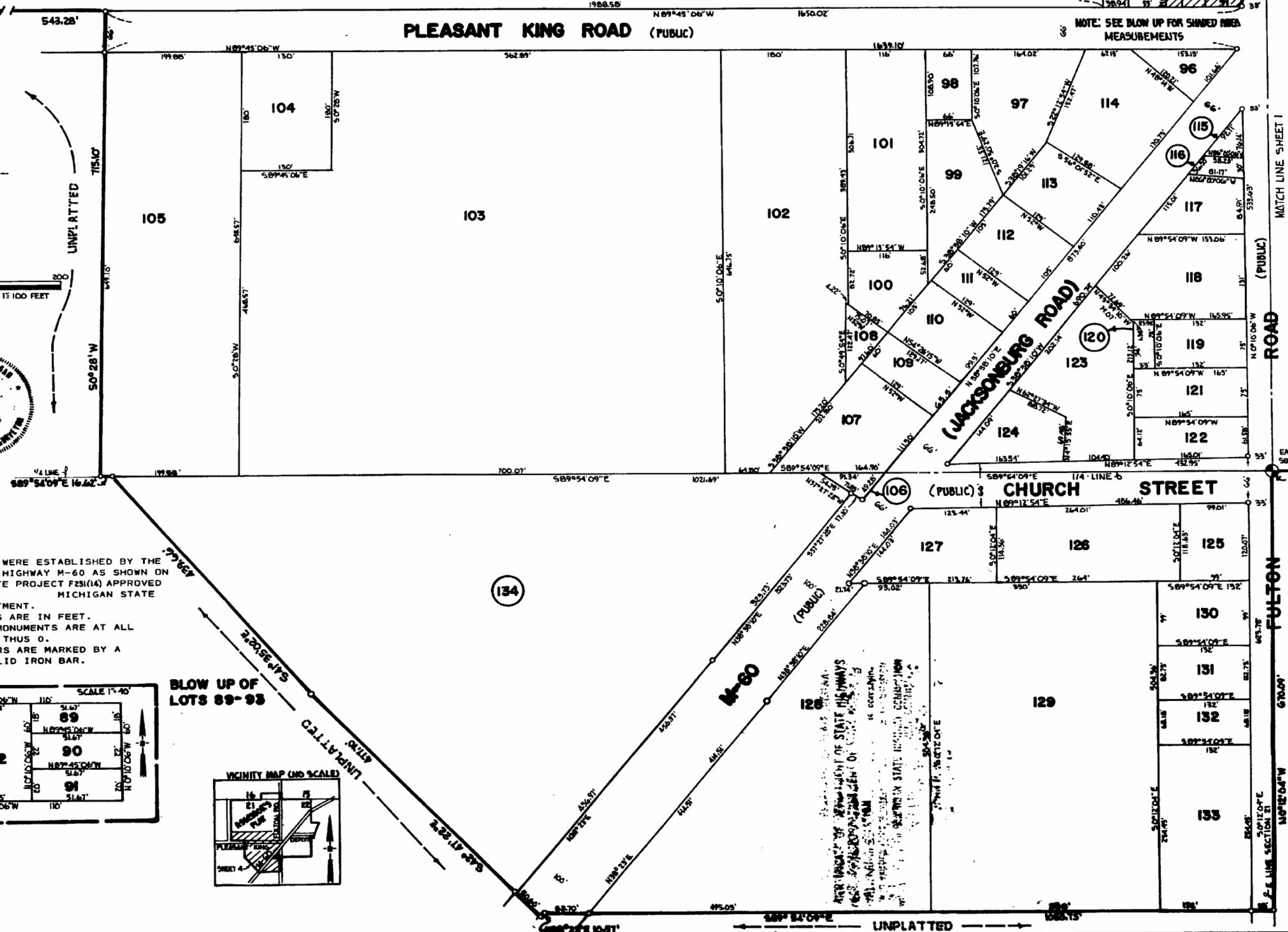
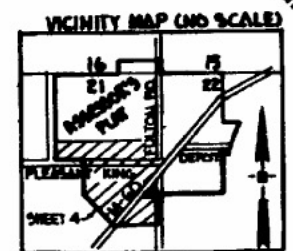
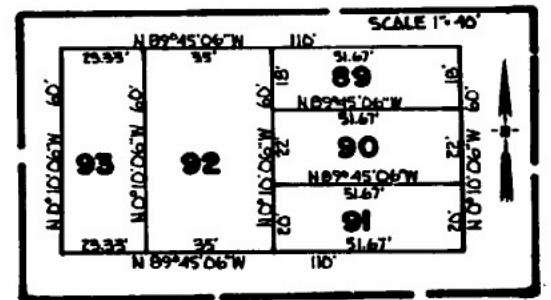


ASSESSOR'S PLAT OF LEONIDAS

SITUATED IN THE EAST 1/2 OF SECTIONS 16, 21 & THE NW 1/4 OF SECTION 22, T5S, R9W, LEONIDAS TOWNSHIP, ST. JOSEPH COUNTY, MICHIGAN



LEGEND
 PLAT BEARINGS WERE ESTABLISHED BY THE CENTERLINE OF HIGHWAY M-60 AS SHOWN ON PLANS FOR STATE PROJECT F231(14) APPROVED FEBRUARY 19, 1963 MICHIGAN STATE HIGHWAY DEPARTMENT.
 ALL DIMENSIONS ARE IN FEET.
 4" CONCRETE MONUMENTS ARE AT ALL POINTS MARKED THUS O.
 ALL LOT CORNERS ARE MARKED BY A 1/2" X 18" SOLID IRON BAR.



ASSESSOR'S PLAT OF LEONIDAS

SITUATED IN THE EAST 1/2 OF SECTIONS 16, 21 & THE NW 1/4 OF SECTION 22, T5S, R9W,
LEONIDAS TOWNSHIP, ST. JOSEPH COUNTY, MICHIGAN.

SURVEYOR'S CERTIFICATE:

I, ROBERT E. SAYERS, SURVEYOR, CERTIFY:
THAT I HAVE SURVEYED, DIVIDED AND MAPPED THE LAND SHOWN ON THIS
PLAT, DESCRIBED AS FOLLOWS: "ASSESSOR'S PLAT OF LEONIDAS,"
SITUATED IN THE EAST 1/2 OF SECTIONS 16 AND 21 AND THE NW 1/4 OF
SECTION 22, T 5 S, R 9 W, LEONIDAS TOWNSHIP, ST. JOSEPH COUNTY,
MICHIGAN, DESCRIBED AS FOLLOWS: COMMENCING AT THE WEST 1/4 CORNER
OF SAID SECTION 22, T 5 S, R 9 W, LEONIDAS TOWNSHIP, ST. JOSEPH
COUNTY, MICHIGAN, WHICH IS THE POINT OF BEGINNING OF THIS ASSESSOR'S
PLAT: THE BOUNDARY RUNS THENCE N 89°35'29" E ALONG THE EAST-WEST
1/4 LINE OF SAID SECTION 22 1369.84 FEET, THENCE N 0°10'36" W,
PARALLEL WITH THE WEST 1/2-1/4 LINE OF SAID SECTION 1340.84 FEET,
THENCE N 89°46' E 55.84 FEET, THENCE N 9°08'19" E 492.08 FEET,
THENCE N 89°09'50" W 168.50 FEET, THENCE N 0°10'36" W ALONG THE
WEST 1/2-1/4 LINE OF SAID SECTION 820.64 FEET, THENCE S 89°32'42" W
ALONG THE NORTH LINE OF SAID SECTION 1336.29 FEET TO THE NORTHWEST
CORNER THEREOF, THENCE N 0°01'34" E ALONG THE EAST LINE OF SECTION
16, T 5 S, R 9 W, MICHIGAN, 214.50 FEET, THENCE N 89°26'18" W
848.23 FEET, THENCE S 0°01'34" W 214.50 FEET TO THE NORTH LINE OF
SECTION 21 OF SAID T 5 S, R 9 W, MICHIGAN, THENCE N 89°26'18" W
ALONG THE NORTH LINE OF SAID SECTION 21 FOR 1374.92 FEET, THENCE
S 0°10'06" E, PARALLEL WITH THE EAST LINE OF SAID SECTION 21, FOR
832.87 FEET, THENCE S 0°05'39" E 1118.28 FEET, THENCE S 89°45'06" E
ALONG THE NORTH LINE OF PLEASANT KING ROAD 543.28 FEET, THENCE
S 0°28' W 715.10 FEET, THENCE S 89°54'09" E ALONG THE EAST-WEST
1/4 LINE OF SAID SECTION 21 FOR 16.62 FEET, THENCE S 41°35'02" E
439.66 FEET, THENCE S 42°47'22" E 477.70 FEET TO THE CENTERLINE OF
HIGHWAY M-60, THENCE N 38°23' E ALONG THE CENTERLINE OF SAID
HIGHWAY 10.57 FEET, THENCE S 89°54'09" E, PARALLEL WITH THE EAST-
WEST 1/4 LINE OF SAID SECTION 21, 1053.75 FEET TO THE EAST LINE
OF SAID SECTION 21, THENCE N 0°12'04" W ALONG SAID SECTION LINE
670.09 FEET TO THE EAST 1/4 CORNER THEREOF WHICH IS THE POINT OF
ENDING OF SAID ASSESSOR'S PLAT. THAT I HAVE MADE SUCH SURVEY, LAND
DIVISION AND PLAT BY THE DIRECTION OF THE TOWNSHIP BOARD OF THE
TOWNSHIP OF LEONIDAS. THE ORDER TO PREPARE THIS ASSESSOR'S PLAT WAS
MADE ON JANUARY 8, 1975; THAT SUCH PLAT IS A CORRECT REPRESENTATION
OF ALL THE EXTERIOR BOUNDARIES OF THE LAND SURVEYED AND THE SUBDIV-
ISION OF IT; THAT THE REQUIRED MONUMENTS AND LOT MARKERS HAVE BEEN
LOCATED IN THE GROUND AND THAT SURETY HAS BEEN DEPOSITED WITH THE
MUNICIPALITY AS REQUIRED BY SECTION 125 OF THE ACT; THAT THE ACCURACY
OF SURVEY IS WITHIN THE LIMITS REQUIRED BY SECTION 126 OF THE ACT;
THAT THE BEARINGS SHOWN ON THE PLAT ARE EXPRESSED AS REQUIRED BY
SECTION 126(3) OF THE ACT AND AS EXPLAINED IN THE LEGEND.

THIS PLAT CONTAINS 135 LOTS.
AUGUST 25, 1976
DATE

SAYERS & ASSOCIATES
P.O. BOX 212
STURGIS, MICHIGAN 49091

ROBERT E. SAYERS
R.L.S. #7874
PRESIDENT



CERTIFICATE OF COUNTY ROAD COMMISSIONERS

THE BOARD OF COUNTY ROAD COMMISSIONERS OF THE COUNTY OF ST. JOSEPH,
MICHIGAN, DO HEREBY CERTIFY THAT THE ROADS SHOWN ON SAID PLAT WERE IN
EXISTENCE AT THE TIME THE PLAT WAS MADE. THIS CERTIFICATION MADE THIS
FOURTH DAY OF SEPTEMBER 1976, IN ACCORDANCE WITH SECTION 209(1)
OF ACT 288, OF P.A. 1967

FRANK SHELLENBARGER, MEMBER

D.W. ARNEY, MEMBER

CARL L. ROBERTS, CHAIRMAN

CERTIFICATE OF DEPARTMENT OF STATE HIGHWAYS AND TRANSPORTATION

Approved on September 27, 1976 as complying
with existing right of way.

MICHIGAN STATE HIGHWAY COMMISSION

JOHN P. WOODFORD, CHIEF ENGINEER

ASSESSOR'S CERTIFICATE

I, AS ASSESSOR, BY VIRTUE OF THE AUTHORITY VESTED IN SECTION
201(2), ACT 288 OF P.A. OF 1967, HAVING BEEN DULY AUTHORIZED BY
THE TOWNSHIP OF LEONIDAS, ST. JOSEPH COUNTY, MICHIGAN, HAVE CAUSED
THE LAND DESCRIBED IN THE ANNEXED PLAT TO BE SURVEYED, LAID OUT AND
PLATTED, AND CERTIFY THAT JACKSONBURG ROAD (M-60), FULTON ROAD,
DEPOT STREET, CHURCH STREET, AND PLEASANT KING ROAD HAVE BEEN ACQUIRED
BY PURCHASE OR ADVERSE POSSESSION FOR PUBLIC USE, AND THAT THE PLAT
CONFORMS TO SECTIONS 201 THROUGH 213 OF ACT 288 OF P.A. OF 1967.

WITNESS
B. E. SAYERS
JOHN H. BAUCKHAM, WITNESS

RAY E. WOLFE, TOWNSHIP ASSESSOR
P.O. BOX 97, LEONIDAS, MI. 49066

ACKNOWLEDGEMENT

STATE OF MICHIGAN SS
COUNTY OF ST. JOSEPH

ON THIS 24 DAY OF September A.D. 1976, BEFORE ME PERSON-
ALLY CAME THE ABOVE NAMED RAY E. WOLFE, ASSESSOR OF LEONIDAS TOWN-
SHIP, KNOWN TO ME TO BE THE PERSON WHO EXECUTED THE ABOVE DEDICATION,
AND ACKNOWLEDGED THE SAME TO BE HIS FREE ACT AND DEED AS SUCH
ASSESSOR.

GERTRUDE SAXMAN
NOTARY PUBLIC IN AND FOR ST. JOSEPH CO.

MY COMMISSION EXPIRES September 28, 1976

CERTIFICATE OF MUNICIPAL APPROVAL

THIS PLAT WAS APPROVED ON September 24, 1976 BY THE TOWNSHIP BOARD
OF THE TOWNSHIP OF LEONIDAS AS HAVING BEEN MADE AND COMPLYING WITH
THE REQUIREMENTS OF SEC. 201 AND 209(4) OF P.A. 288 OF 1967.

GERTRUDE SAXMAN, TOWNSHIP CLERK

RECORDING CERTIFICATE

STATE OF MICHIGAN
ST. JOSEPH COUNTY

THIS PLAT WAS RECEIVED FOR RECORD ON THE 30th DAY OF September
A.D. 1976, AT 3:07 P.M., RECORDED IN LIBER 528 OF DEEDS ON
PAGES 99-103 INCLUSIVE

DONNA E. DONMYER, REGISTER OF DEEDS

EXAMINED AND APPROVED

Date SEPT. 30, 1976

ALLISON GREEN
STATE TREASURER