

# WOODRIDGE NUMBER 1.

A SUBDIVISION SITUATED IN THE EAST 1/2 OF THE EAST 1/2 OF SECTION 14,  
TOWN 6 SOUTH, RANGE 12 WEST, FABIUS TOWNSHIP, ST. JOSEPH COUNTY, MICHIGAN.

### CERTIFICATE OF MUNICIPAL APPROVAL

I CERTIFY THAT THIS PLAT WAS APPROVED BY THE TOWNSHIP BOARD OF THE TOWNSHIP OF FABIUS AT A MEETING HELD Nov. 5<sup>th</sup>, 1971, AND WAS REVIEWED AND FOUND TO BE IN COMPLIANCE WITH ACT 288, P.A. 1967. THIS PLAT WAS APPROVED ON OCTOBER 20, 1971 BY THE ST. JOSEPH COUNTY HEALTH DEPARTMENT.

*Raymond A. Krull*  
RAYMOND A. KRULL, CLERK

### CERTIFICATE OF COUNTY ROAD COMMISSIONERS:

APPROVED ON NOVEMBER 4, 1971 AS COMPLYING WITH SECTIONS 183 OF ACT 288, P.A. 1967, AND THE APPLICABLE PUBLISHED RULES AND REGULATIONS OF THE BOARD OF ROAD COMMISSIONERS OF ST. JOSEPH COUNTY.

*Frank Shellenbarger*  
FRANK SHELLENBARGER, CHAIRMAN

*Carl Roberts*  
CARL ROBERTS, MEMBER

*D.W. Arney*  
D.W. ARNEY, MEMBER

### COUNTY DRAIN COMMISSIONER'S CERTIFICATE:

APPROVED ON NOVEMBER 2, 1971 AS COMPLYING WITH SECTION 192 OF ACT 288, P.A. 1967, AND THE APPLICABLE RULES AND REGULATIONS PUBLISHED BY MY OFFICE IN THE COUNTY OF ST. JOSEPH.

*Lloyd B. Cupp*  
LLOYD B. CUPP, DRAIN COMMISSIONER

### COUNTY PLAT BOARD CERTIFICATE:

THIS PLAT HAS BEEN REVIEWED AND IS APPROVED BY THE ST. JOSEPH COUNTY PLAT BOARD ON Nov. 16<sup>th</sup>, 1971, AS BEING IN COMPLIANCE WITH ALL OF THE PROVISIONS OF ACT 288, P.A. 1967, AND THE PLAT BOARD'S APPLICABLE RULES AND REGULATIONS.

*Donna E. Donmyer*  
DONNA E. DONMYER, REGISTER OF DEEDS

*Stanley M. Huff*  
STANLEY M. HUFF,  
COUNTY TREASURER

*John W. Marvin*  
JOHN W. MARVIN,  
COUNTY CLERK

### PROPRIETOR'S CERTIFICATE:

I, AS PROPRIETOR, CERTIFY THAT I CAUSED THE LAND EMBRACED IN THIS PLAT TO BE SURVEYED, DIVIDED, MAPPED AND DEDICATED AS REPRESENTED ON THIS PLAT AND THAT PORTION OF COON HOLLOW ROAD WHICH FALLS WITHIN THE BOUNDARY OF SAID PLAT IS FOR THE USE OF THE PUBLIC; THAT THE PUBLIC UTILITY EASEMENTS ARE PRIVATE EASEMENTS AND THAT ALL OTHER EASEMENTS ARE FOR THE USES SHOWN ON THE PLAT.

*Ruth H. Smith*  
RUTH H. SMITH  
418 U.S. 131  
THREE RIVERS, MICH.,

*Robert E. Sayers*  
ROBERT E. SAYERS, WITNESS

*Jean L. Sayers*  
JEAN L. SAYERS, WITNESS

### ACKNOWLEDGEMENT:

STATE OF MICHIGAN  
COUNTY OF ST. JOSEPH SS

PERSONALLY CAME BEFORE ME THIS 1<sup>st</sup> DAY OF November, 1971 THE ABOVE NAMED RUTH H. SMITH, TO ME KNOWN TO BE THE PERSON WHO EXECUTED THE FOREGOING INSTRUMENT AND ACKNOWLEDGED THAT SHE EXECUTED THE SAME AS HER FREE ACT AND DEED.

NOTARY PUBLIC, *Jean L. Sayers & Co.*, MICHIGAN.  
JEAN L. SAYERS, ST. JOSEPH COUNTY  
MY COMMISSION EXPIRES: MAY 27, 1972

### COUNTY TREASURER'S CERTIFICATE:

RECORDS IN MY OFFICE SHOW NO UNPAID TAXES OR SPECIAL ASSESSMENTS FOR THE FIVE YEARS PRECEDING NOVEMBER 2, 1971, INVOLVING THE LANDS INCLUDED IN THIS PLAT.

*Stanley M. Huff*  
STANLEY M. HUFF, COUNTY TREASURER, ST. JOSEPH COUNTY

REGISTER OF DEEDS OFFICE  
ST. JOSEPH COUNTY SS

THIS PLAT OF WOODRIDGE NUMBER 1 WAS RECORDED THIS 26 DAY OF January, 1972 AT 3:30 O'CLOCK P.M. IN LIBER 5 OF PLATS ON PAGE 37. 1972

*Donna E. Donmyer*  
DONNA E. DONMYER, REGISTER OF DEEDS

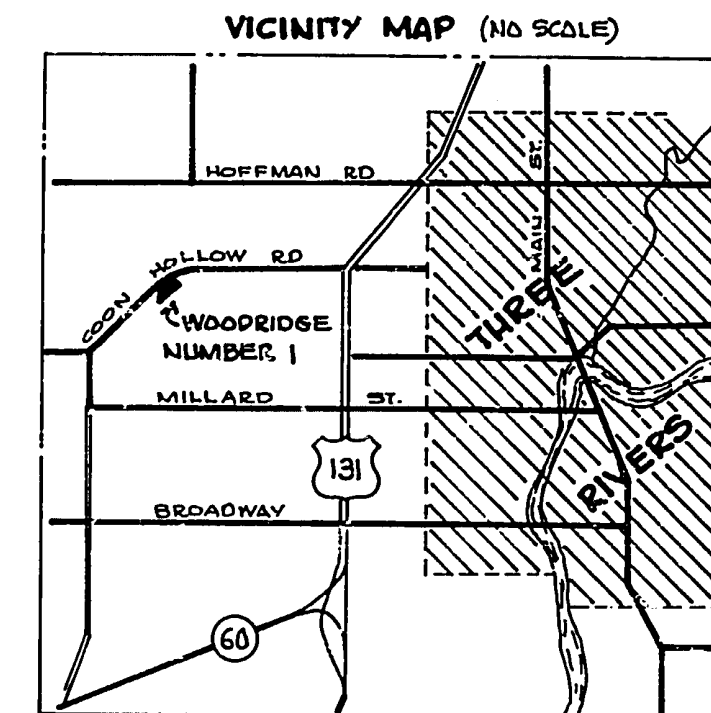
### SURVEYOR'S CERTIFICATE:

I, ROBERT E. SAYERS, SURVEYOR, CERTIFY: THAT I HAVE SURVEYED, DIVIDED AND MAPPED THE LAND SHOWN ON THIS PLAT, DESCRIBED AS FOLLOWS: WOODRIDGE NUMBER 1, A SUBDIVISION SITUATED IN THE EAST 1/2 OF THE EAST 1/2 OF SECTION 14, TOWN 6 SOUTH, RANGE 12 WEST, FABIUS TOWNSHIP, ST. JOSEPH COUNTY, MICHIGAN, IS DESCRIBED AS FOLLOWS: COMMENCING AT THE SOUTHEAST CORNER OF SAID SECTION 14 AND RUNNING THENCE N 89°14' 03" W ALONG THE SOUTH LINE OF SAID SECTION 14 A DISTANCE OF 1321.87 FEET TO THE SOUTHWEST CORNER OF THE EAST 1/2 OF SAID SECTION 14, THENCE N00°02' 25" W ALONG THE EAST 1/8<sup>TH</sup> LINE OF SAID SECTION 14 A DISTANCE OF 2090.23 FEET TO THE POINT OF BEGINNING, THENCE N00°02' 25" W ALONG SAID EAST 1/8<sup>TH</sup> LINE 389.27 FEET, THENCE NE'LY ALONG A 1374.17 FOOT RADIUS CURVE TO THE RIGHT AN ARC DISTANCE OF 196.55 FEET (SAID CURVE HAVING AN "I" ANGLE OF 6°11' 42" AND BEING SUBTENDED BY A CHORD BEARING N 56°53' 09" E 196.38 FEET), THENCE N 54°59' E 434 FEET, THENCE S 35°01' E 333 FEET, THENCE S 54°59' W 853.03 FEET TO THE POINT OF BEGINNING; THIS SUBDIVISION CONTAINS 5 NUMBERED LOTS. THAT I HAVE MADE SUCH SURVEY, LAND-DIVISION AND PLAT BY THE DIRECTION OF THE OWNER OF SUCH LAND. THAT SUCH PLAT IS A CORRECT REPRESENTATION OF ALL THE EXTERIOR BOUNDARIES OF THE LAND SURVEYED AND THE SUBDIVISION OF IT. THAT THE REQUIRED MONUMENTS AND LOT MARKERS HAVE BEEN LOCATED IN THE GROUND AS REQUIRED BY SECTION 125 OF THE ACT. THAT THE ACCURACY OF THE SURVEY IS WITHIN THE LIMITS REQUIRED BY SECTION 126 OF THE ACT. THAT THE BEARINGS SHOWN ON THE PLAT ARE EXPRESSED AS REQUIRED BY SECTION 126(3) OF THE ACT AND AS EXPLAINED IN THE LEGEND.

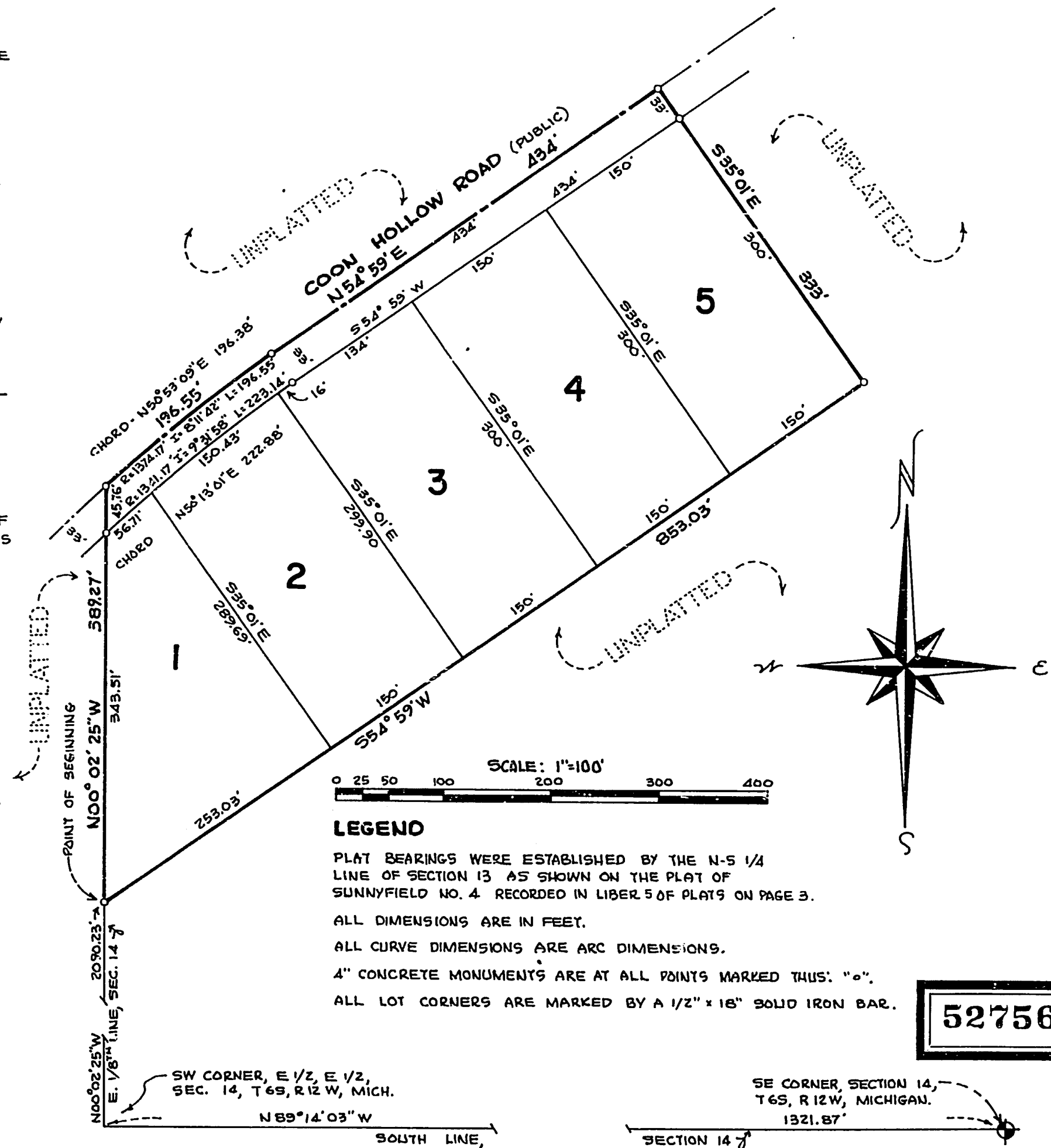


*Robert E. Sayers*  
ROBERT E. SAYERS, REGISTERED LAND SURVEYOR # 7874  
P.O. BOX 212, STURGIS, MICHIGAN, 49791

NOVEMBER 1, 1971  
DATE



Certified true copy of recorded plat.  
*Allison Green*  
ALLISON GREEN  
STATE TREASURER  
By *Richard E. Lopez*  
Richard E. Lopez, Pal Examiner  
Date Feb. 17, 1972



### LEGEND

PLAT BEARINGS WERE ESTABLISHED BY THE N-S 1/4 LINE OF SECTION 13 AS SHOWN ON THE PLAT OF SUNNYFIELD NO. 4 RECORDED IN LIBER 5 OF PLATS ON PAGE 3.  
ALL DIMENSIONS ARE IN FEET.  
ALL CURVE DIMENSIONS ARE ARC DIMENSIONS.  
4" CONCRETE MONUMENTS ARE AT ALL POINTS MARKED THUS: "o".  
ALL LOT CORNERS ARE MARKED BY A 1/2" x 16" SOLID IRON BAR.

52756

SW CORNER, E 1/2, E 1/2,  
SEC. 14, T 6S, R 12 W, MICH.  
N 89°14' 03" W

SE CORNER, SECTION 14,  
T 6S, R 12 W, MICHIGAN.  
1321.87'