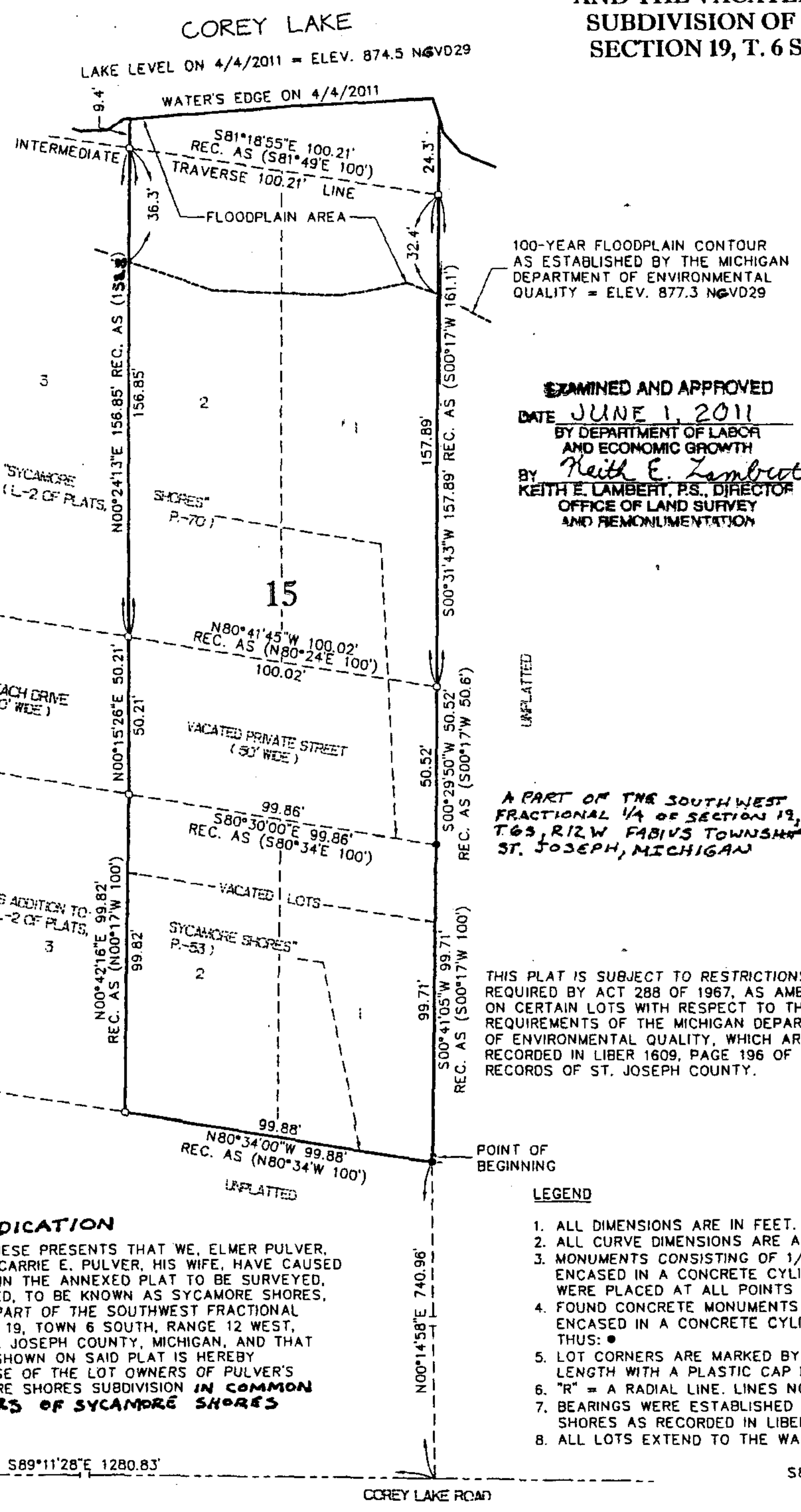
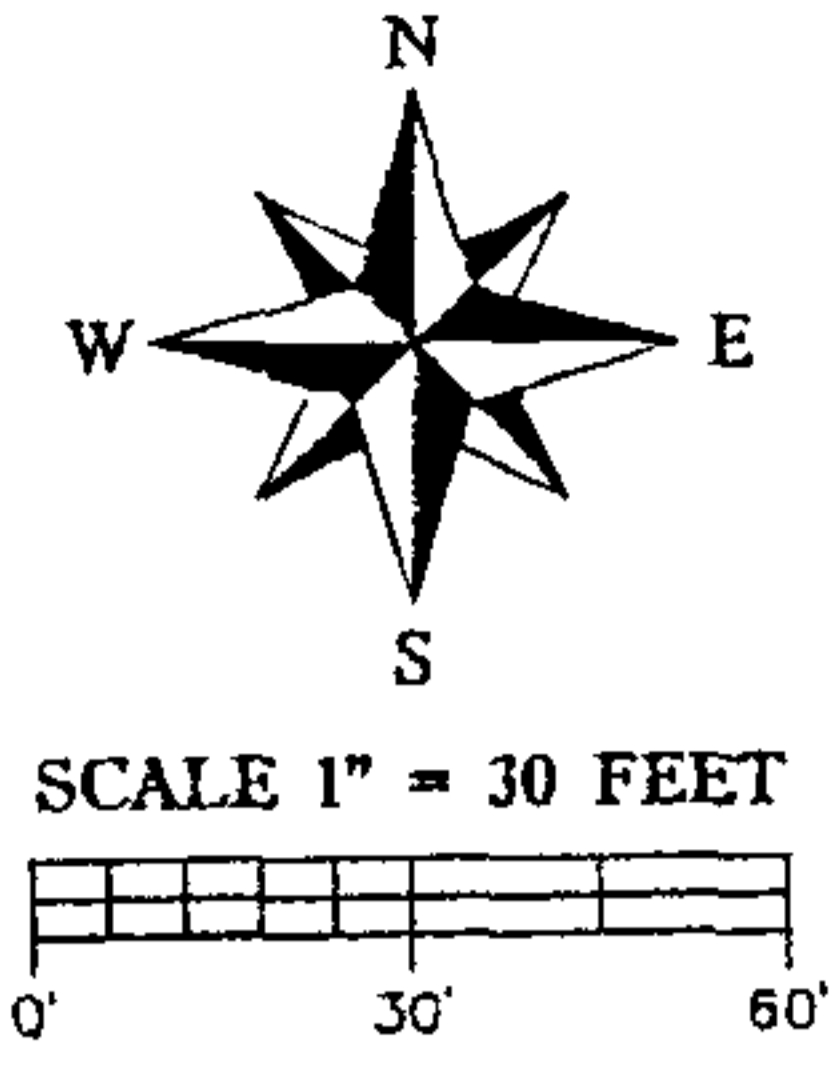


**AMENDED PLAT OF LOTS 1 AND 2,
AND THE VACATED PORTION OF THE PRIVATE STREET IN SYCAMORE SHORES, A
SUBDIVISION OF A PART OF THE SOUTHWEST FRACTIONAL ONE-QUARTER OF
SECTION 19, T. 6 S., R. 12 W., FABIVS TOWNSHIP, ST. JOSEPH COUNTY, MICHIGAN**



EXAMINED AND APPROVED
DATE JUNE 1, 2011
BY DEPARTMENT OF LABOR
AND ECONOMIC GROWTH
BY Keith E. Lambert
KEITH E. LAMBERT, P.S., DIRECTOR
OFFICE OF LAND SURVEY
AND REMONUMENTATION

A PART OF THE SOUTHWEST
FRACTIONAL 1/4 OF SECTION 19,
T. 6 S., R. 12 W. FABIVS TOWNSHIP
ST. JOSEPH, MICHIGAN

THIS PLAT IS SUBJECT TO RESTRICTIONS AS
REQUIRED BY ACT 288 OF 1967, AS AMENDED
ON CERTAIN LOTS WITH RESPECT TO THE
REQUIREMENTS OF THE MICHIGAN DEPARTMENT
OF ENVIRONMENTAL QUALITY, WHICH ARE
RECORDED IN LIBER 1609, PAGE 196 OF
RECORDS OF ST. JOSEPH COUNTY.

LEGEND

1. ALL DIMENSIONS ARE IN FEET.
2. ALL CURVE DIMENSIONS ARE ARC DISTANCES.
3. MONUMENTS CONSISTING OF 1/2 INCH DIAMETER STEEL BARS 36 INCHES IN LENGTH, ENCASED IN A CONCRETE CYLINDER 4 INCHES IN DIAMETER AND 36 INCHES LONG, WERE PLACED AT ALL POINTS MARKED THUS: ○
4. FOUND CONCRETE MONUMENTS CONSISTING OF 1/2 INCH DIAMETER STEEL BARS ENCASED IN A CONCRETE CYLINDER 4 INCHES IN DIAMETER AT ALL POINTS MARKED THUS: ●
5. LOT CORNERS ARE MARKED BY A 1/2 INCH DIAMETER STEEL BAR 18 INCHES IN LENGTH WITH A PLASTIC CAP LABELED 32339.
6. "R" = A RADIAL LINE. LINES NOT MARKED ARE NON-RADIAL.
7. BEARINGS WERE ESTABLISHED FROM THE PLAT OF PULVER'S ADDITION TO SYCAMORE SHORES AS RECORDED IN LIBER 2 OF PLATS, PAGE 53, ST. JOSEPH COUNTY RECORDS.
8. ALL LOTS EXTEND TO THE WATER'S EDGE OF COREY LAKE.

SURVEYOR'S CERTIFICATE

I, DAVID W. MOSTROM, SURVEYOR, CERTIFY:

THAT I HAVE SURVEYED AND MAPPED THE LAND SHOWN ON THIS AMENDED PLAT, DESCRIBED AS FOLLOWS:

AMENDED PLAT OF LOTS 1 AND 2, AND THE VACATED PORTION OF THE PRIVATE STREET, IN SYCAMORE SHORES, A SUBDIVISION OF A PART OF THE SOUTHWEST FRACTIONAL ONE-QUARTER OF SECTION 19, T. 6S., R. 12W., FABIVS TOWNSHIP, ST. JOSEPH COUNTY, MICHIGAN AND A REPLAT OF VACATED LOTS 1 AND 2, PULVER'S ADDITION TO SYCAMORE SHORES, A PART OF THE SOUTHWEST FRACTIONAL QUARTER, SECTION 19, T. 6S., R. 12W., FABIVS TOWNSHIP, ST. JOSEPH COUNTY, MICHIGAN.

DESCRIBED AS:

COMMENCING AT THE SOUTHWEST CORNER OF SAID SECTION 19 AND RUNNING THENCE S89°11'28"E, ALONG THE SECTION LINE, 1280.83 FEET; THENCE N00°14'58"E 740.96 FEET TO THE SOUTHEAST CORNER OF LOT 1 OF PULVER'S ADDITION TO SYCAMORE SHORES (LIBER 2 OF PLATS, PAGE 53) AND POINT OF BEGINNING OF THIS DESCRIPTION: THE BOUNDARY RUNS THENCE N80°34'00"W 99.88 FEET TO THE SOUTHEAST CORNER OF LOT 3 OF PULVER'S ADDITION TO SYCAMORE SHORES; THENCE N00°42'16"E 99.82 FEET TO THE NORTHEAST CORNER OF LOT 3; THENCE N00°15'26"E 50.21 FEET TO THE SOUTHEAST CORNER OF LOT 3 OF SYCAMORE SHORES (LIBER 2 OF PLATS, PAGE 70); THENCE N00°24'13"E 156.85 FEET TO THE NORTHEAST CORNER OF LOT 3; THENCE S81°18'55"E, ALONG AN INTERMEDIATE TRAVERSE LINE ALONG THE SOUTH SIDE OF COREY LAKE, 100.21 FEET TO THE NORTHEAST CORNER OF LOT 1 OF SYCAMORE SHORES; THENCE S00°31'43"W 157.89 FEET TO THE SOUTHEAST CORNER OF LOT 1; THENCE S00°29'50"W 50.52 FEET TO THE NORTHEAST CORNER OF LOT 1 OF PULVER'S ADDITION TO SYCAMORE SHORES; THENCE S00°41'05"W 99.71 FEET TO THE POINT OF BEGINNING.

INCLUDING ALL LAND BETWEEN THE INTERMEDIATE TRAVERSE LINES AND THE WATER'S EDGE OF COREY LAKE BOUNDED BY THE SIDE LOT LINES EXTENDED.

THIS PLAT CONTAINS **0.7 ACRES**. LOT 15 EXTENDS TO THE WATER'S EDGE.

THAT I HAVE MADE SUCH SURVEY AND AMENDED PLAT BY THE DIRECTION OF THE PLAINTIFF.

THAT SUCH AMENDED PLAT IS A CORRECT REPRESENTATION OF THE EXTERIOR BOUNDARY OF THE LAND SURVEYED.

THAT THE REQUIRED MONUMENTS AND LOT MARKERS HAVE BEEN LOCATED IN THE GROUND, AS REQUIRED BY THE ACT.

THAT THE ACCURACY OF SURVEY IS WITHIN THE LIMITS REQUIRED BY THE ACT.

THAT THE BEARINGS SHOWN ON THE AMENDED PLAT ARE EXPRESSED AS REQUIRED BY THE ACT AND AS EXPLAINED IN THE LEGEND.

THAT SUCH AMENDED PLAT IS A TRUE AND EXACT COPY OF THE PORTION OF THE PLATS OF SYCAMORE SHORES AND PULVER'S ADDITION TO SYCAMORE SHORES BY JUDGMENT TO VACATE, CORRECT OR REVISE THE PLAT OR A PORTION OF THE PLAT IN THE MATTER OF MARY LOU PARSONS, PLAINTIFF, WHICH WAS ENTERED BY CIRCUIT COURT JUDGE PAUL STUTESMAN, IN THE COUNTY OF ST. JOSEPH, STATE OF MICHIGAN, ON THE 28TH DAY OF MARCH 2011. CIRCUIT COURT FILE NUMBER: 2010-1015-CH

DATE May 6, 2011

D.W.M.

DAVID W. MOSTROM, VICE PRESIDENT
PROFESSIONAL SURVEYOR NO. 32339
MOSTROM & ASSOC., INC.
610 W. BURR OAK ST.
CENTREVILLE, MI 49032-0085



STATE OF MICHIGAN)
ST JOSEPH COUNTY)
THAT THIS PLAT WAS RECEIVED FOR RECORD
ON THE 14th DAY OF JUNE, 2011
AT 10:43 A.M. AND RECORDED IN
LIBER 6 OF PLATS, PAGE 230

Jennifer L. Wall
JENNIFER L. WALL, REGISTER OF DEEDS

DEDICATION

KNOW ALL MEN BY THESE PRESENTS THAT WE, ELMER PULVER, AS PROPRIETOR, AND CARRIE E. PULVER, HIS WIFE, HAVE CAUSED THE LAND EMBRACED IN THE ANNEXED PLAT TO BE SURVEYED, LAID OUT AND PLATTED, TO BE KNOWN AS SYCAMORE SHORES, A SUBDIVISION OF A PART OF THE SOUTHWEST FRACTIONAL QUARTER OF SECTION 19, TOWN 6 SOUTH, RANGE 12 WEST, FABIVS TOWNSHIP, ST. JOSEPH COUNTY, MICHIGAN, AND THAT PRIVATE STREET AS SHOWN ON SAID PLAT IS HEREBY DEDICATED TO THE USE OF THE LOT OWNERS OF PULVER'S ADDITION TO SYCAMORE SHORES SUBDIVISION IN COMMON WITH LOT OWNERS OF SYCAMORE SHORES SUBDIVISION.

SW COR. SEC. 19 T6S, R12W
SEE L-5, P.-47 OF CORNER RECORDS

SOUTH 1/4 COR. SEC. 19 T6S, R12W
SEE L-7, P.-272 OF CORNER RECORDS

