

4860

**DEDICATION.**  
I, Fritz Van Nordsieck, the sole and only proprietor of Sycamore Beach, the owner of the lands platted and laid out within the boundaries of said Sycamore Beach as shown by the annexed plat thereof, do by these presents, hereby dedicate to the public for street purposes the Street, Avenue and Boulevard as shown on the said plat of Sycamore Beach  
Witness (E.T. Ritz) Fritz Van Nordsieck  
(Samuel S. Ritz)

State of Michigan }  
County of St. Joseph }

On this second day of July, in the year one thousand nine hundred, before me, Samuel S. Ritz, a Notary Public in and for said county, personally appeared Fritz Van Nordsieck, unmarried, whose name is to the same person described in and who executed the foregoing Dedication, who has acknowledged the same to be his act and deed.  
Samuel S. Ritz, Notary Public.

Examined and Approved  
July 16, 1900  
John F. Williams  
Deputy Auditor General.

State of Michigan } s.s.  
County of St. Joseph }

I, Henry H. Ruggles, Register of Deeds, and Samuel S. Ritz, Surveyor, hereby certify that in our book carefully compared this copy with the original plat of Sycamore Beach and that it is a correct copy thereof and of the whole of such original map or plat.  
Henry H. Ruggles, Register of Deeds.  
Samuel S. Ritz, Surveyor.

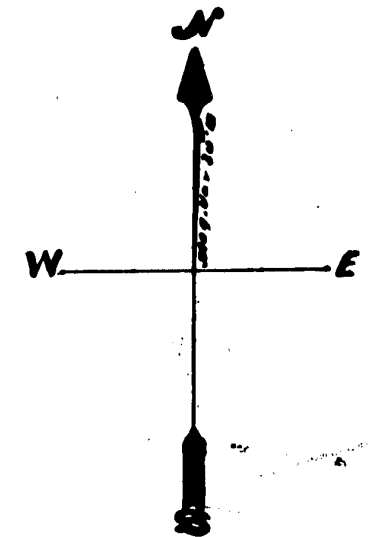
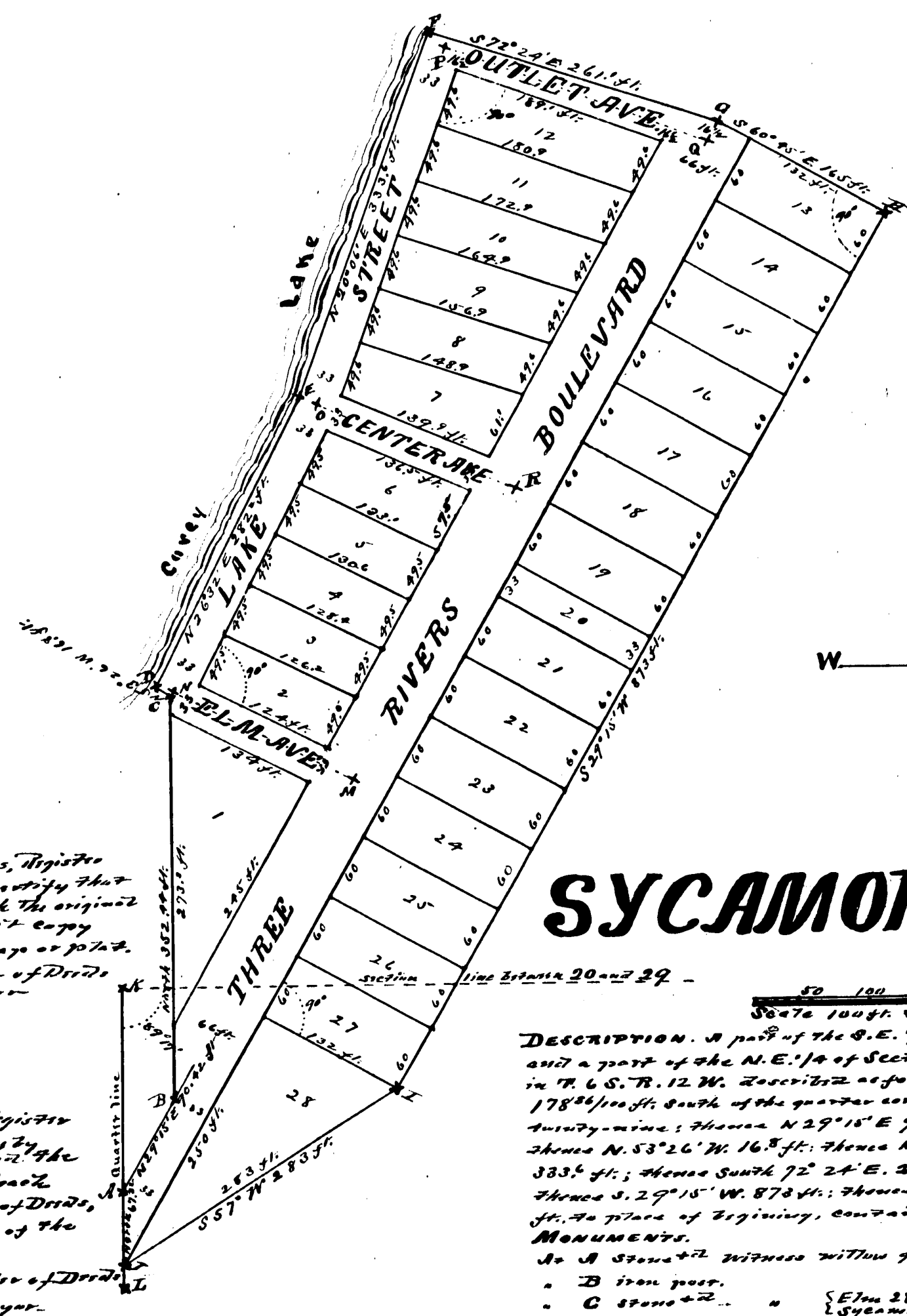
I hereby certify that I have examined the records in my office relating to the description of lands in the within instrument and from such examination it appears that the State and County taxes have been fully paid for the five years preceding the date of said instrument. JUL 21 1900  
Centerville, Mich.  
H.A. Bick  
County Treasurer.

REGISTER'S OFFICE,  
COUNTY OF ST. JOSEPH,  
Received for Record, this 21st day of July, A. D. 1900, at 10-20 o'clock A. M. and Recorded in Vol. 1 of P. 100 on Page 20  
Henry H. Ruggles  
Register of Deeds.

State of Michigan } s.s.  
County of St. Joseph }

I, Henry H. Ruggles, Register of Deeds, and Samuel S. Ritz, Surveyor, hereby certify that we have such carefully compared the annexed copy with the plat of Sycamore Beach now of record in the office of said Register of Deeds, and that it is a true transcript therefrom and of the whole of such record.  
Henry H. Ruggles, Register of Deeds.  
Samuel S. Ritz, Surveyor.

RECEIVED AND FILED,  
IN AUDITOR GENERAL'S OFFICE,  
July 23, 1900,  
John F. Williams  
Deputy Auditor General.



# SYCAMORE BEACH

Scale 100 ft. to one inch

**DESCRIPTION.** A part of the S.E. 1/4 of Section number Twenty and a part of the N.E. 1/4 of Section number Twenty-nine and 27 in T. 6 S., R. 12 W. Described as follows, commencing at a point 178 1/2 feet south of the quarter corner of said sections twenty and twenty-nine; thence N 29° 15' E 90.72 ft.; thence North 552.94 ft. thence N 53° 26' W 16.8 ft.; thence N 26° 32' E 382.5 ft.; thence N 26° 06' E 383.5 ft.; thence South 72° 24' E 261.1 ft.; thence S 60° 46' E 165 ft.; thence S 29° 15' W 873 ft.; thence S 57° W 283 ft.; thence North 67 ft. to the place of beginning, containing 7.37 Acres

- MONUMENTS.**
- A Stone with witness within 7 in North 2 ft
  - B Iron post.
  - C Stone + 2 (Elev 38 + 33° E 463 ft)
  - D Stone + 4 (Sycamore 2 1/2 N 78° 43' )
  - E Stone + 4
  - F Stone + 4
  - G Stone + 4
  - H Stone + 4
  - I Stone + 4
  - J Stone + 4 on quarter line 20 ft north from Stone + 4 at the N.E. corner of the plat of Grand View.
  - K Post and stones 1/4 corner between sections 20 and 29, from which Highway 13 is State 843 E. 105 ft. to 10 = N 58 1/2° W 84 ft.
  - L Stone + 2 at N.E. corner of Grand View plat.
- Stones + 2 are set at the intersection of Streets at the points M, N, O, P, Q and R, at points marked (+) by a cross on the plat.  
Size of lots and width of streets are as shown by figures on the plat.  
The line O, P. produced intersects the line P, Q. 6.8 ft. from P.

4639

4860

27527 - 1900

**DEDICATION.**

I, **Fritz Van Nieuwstadt**, the sole and only proprietor of Sycamore Beach, the owner of the lands hereinafter described within the boundaries of said Sycamore Beach as shown by the annexed plat thereof, do by these presents, for the public use and benefit of the State, Michigan and County of St. Joseph, as shown on the said plat of Sycamore Beach

Witness my hand and seal this 15th day of July, 1900.  
 Fritz Van Nieuwstadt  
 Samuel S. Reed

State of Michigan }  
 County of St. Joseph }

On this second day of July, in the year one thousand nine hundred and one, Samuel S. Reed, a Notary Public in and for said county, personally appeared Fritz Van Nieuwstadt, known to be the same person described in and who executed the foregoing Dedication, who has acknowledged the same to be his act and deed.  
 Samuel S. Reed,  
 Notary Public.

Examined and Approved  
 July 16, 1900  
 John E. Wilkinson  
 Deputy Auditor General.

I hereby certify that I have examined the records in my office relating to the description of lands in the within instrument and from such examination it appears that the State and County taxes have been fully paid for the five years preceding the date of said instrument.  
 JUL 21 1900  
 J. H. Wick  
 County Treasurer.

REGISTERS OFFICE  
 COUNTY OF ST. JOSEPH.  
 Received for Record this 21st day of July A. D. 1900 at 10-20 o'clock A. M. and Recorded in Vol. 1 of P. 745 on Page 20.  
 Henry H. Ruggles  
 Register of Deeds.

State of Michigan }  
 County of St. Joseph }

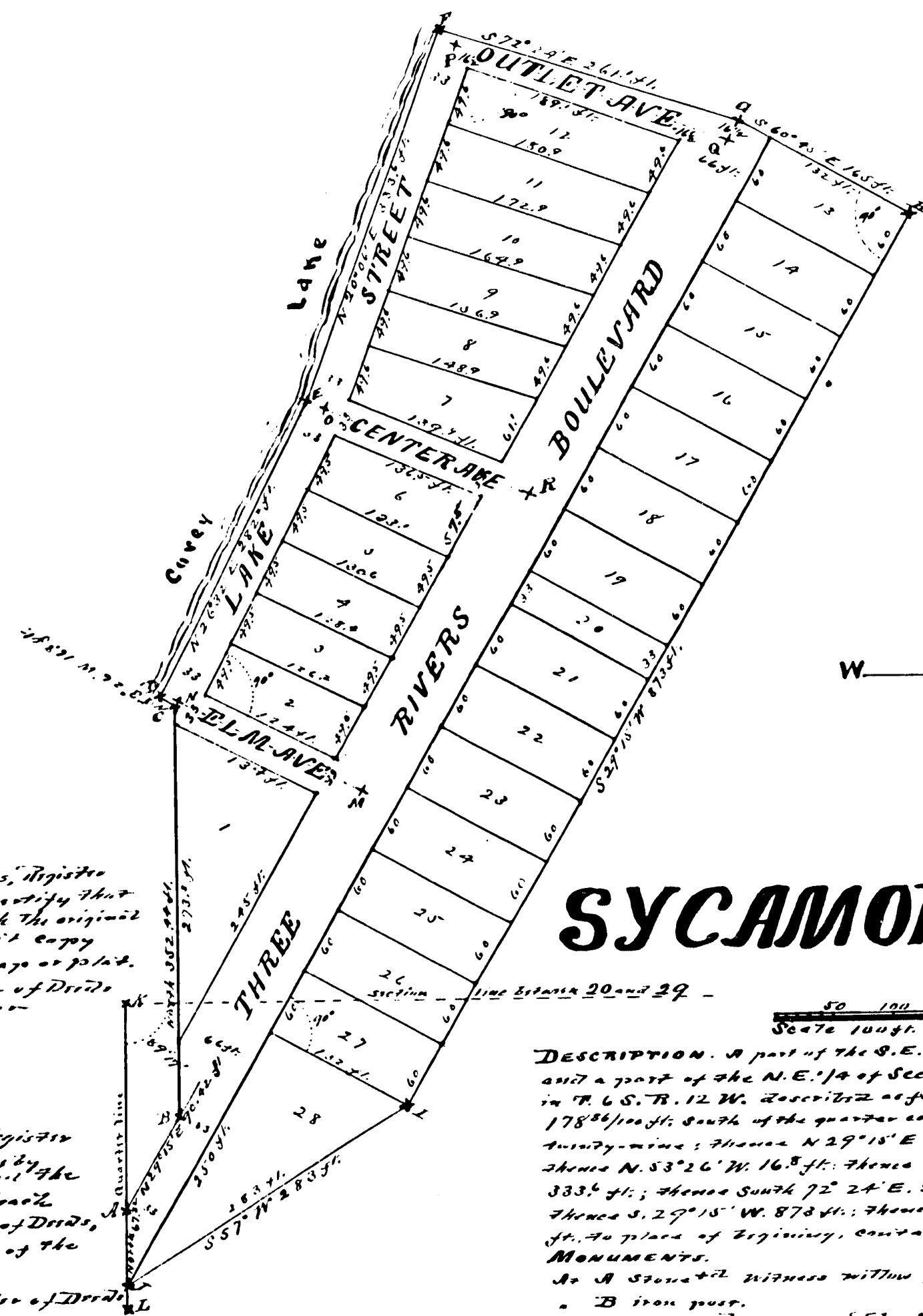
I, Henry H. Ruggles, Register of Deeds, and Samuel S. Reed, Surveyor, hereby certify that we have carefully compared this copy with the original plat of Sycamore Beach and that it is a correct copy thereof and of the whole of such original map or plat.  
 Henry H. Ruggles, Register of Deeds  
 Samuel S. Reed, Surveyor

State of Michigan }  
 County of St. Joseph }

I, Henry H. Ruggles, Register of Deeds, and Samuel S. Reed, Surveyor, hereby certify that we have such carefully compared this copy with the plat of Sycamore Beach now of record in the office of said Register of Deeds, and that it is a true transcript thereof and of the whole of such record.  
 Henry H. Ruggles, Register of Deeds  
 Samuel S. Reed, Surveyor

RECEIVED AND RECORDED IN AUDITOR GENERAL'S OFFICE

July 23 1900  
 John E. Wilkinson  
 Deputy Auditor General



**SYCAMORE BEACH**

**DESCRIPTION.** A part of the S.E. 1/4 of Section number Twenty and a part of the N.E. 1/4 of Section number Twenty-nine and 77 in T. 6 S. R. 12 W. described as follows, commencing at a point 178 1/2 feet south of the quarter corner between sections twenty and twenty-nine; thence N 29° 15' E 90.42 ft.; thence North 352.94 ft.; thence N 53° 26' W 16.8 ft.; thence N 26° 32' E 182.5 ft.; thence N 20° 06' E 333.4 ft.; thence South 72° 24' E 261.8 ft.; thence S 60° 45' E 165 ft.; thence S 27° 15' W 87.8 ft.; thence S 57° W 283 ft.; thence North 67.2 ft. to place of beginning, containing 7.37 Acres

- MONUMENTS.**
- A Stone with witness within 7 in North 2 ft
  - B Iron post.
  - C Stone with witness (E 1/4 Sec 20 S 2° E 40.2 ft. Sycamore 12 1/2 78° 24' 43.5")
  - D Stone with witness
  - E Stone with witness
  - F Stone with witness
  - G Stone with witness
  - H Stone with witness
  - I Stone with witness
  - J Stone with witness on quarter line 20 ft north from stone at the N.E. corner of the plat of Grand View plat.
  - K Post and stones 1/4 corner between sections 20 and 29, from which history is in Town 6 S. R. 12 W. N. 58 1/2° W. 8.7 ft. do 10 " N. 58 1/2° W. 8.7 ft.
  - L Stone at N.E. corner of Grand View plat.
- Stones are set at the intersection of streets at the points M, N, O, P, Q and R, at points marked (+) by across on the plat.  
 Size of lots and width of streets are as shown by figures on the plat.  
 The line O, P. produced intersects the line E, Q. 6.8 ft. from P.

4639

4860

27527 - 1900