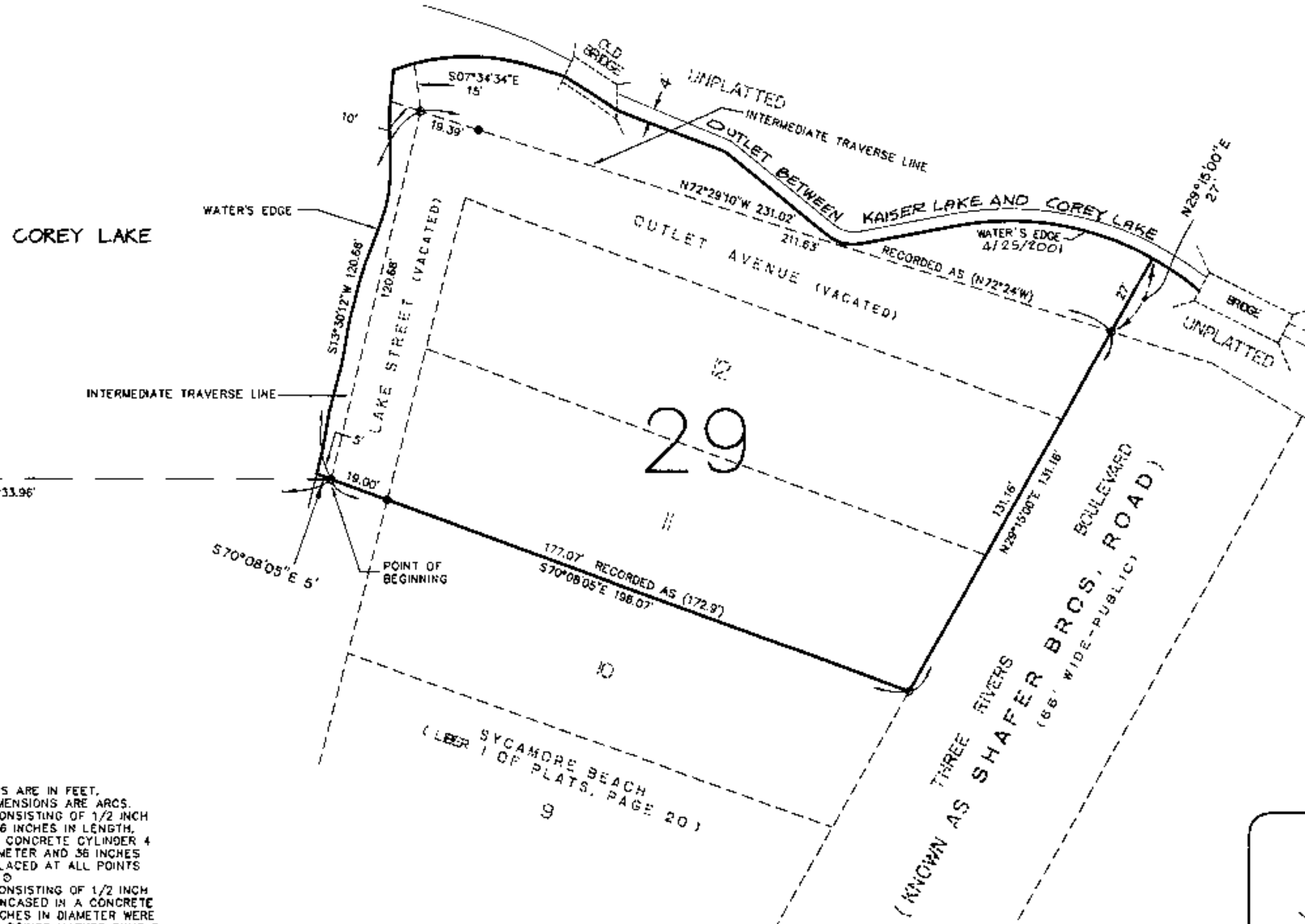
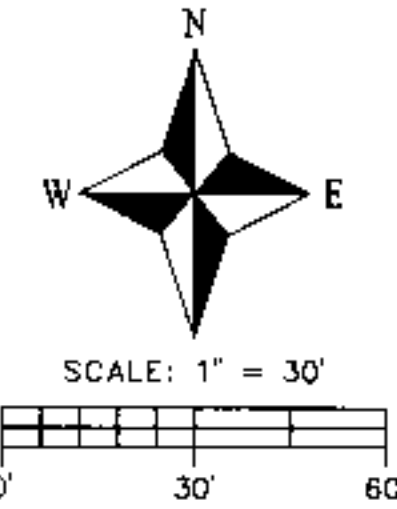


AMENDED PLAT OF LOTS 11 AND 12, VACATED OUTLOT AVENUE AND A PART OF VACATED LAKE STREET OF SYCAMORE BEACH

PART OF THE SE FR'L 1/4 OF SECTION 20, T6S, R12W,
FABIUS TOWNSHIP, ST. JOSEPH COUNTY, MICHIGAN

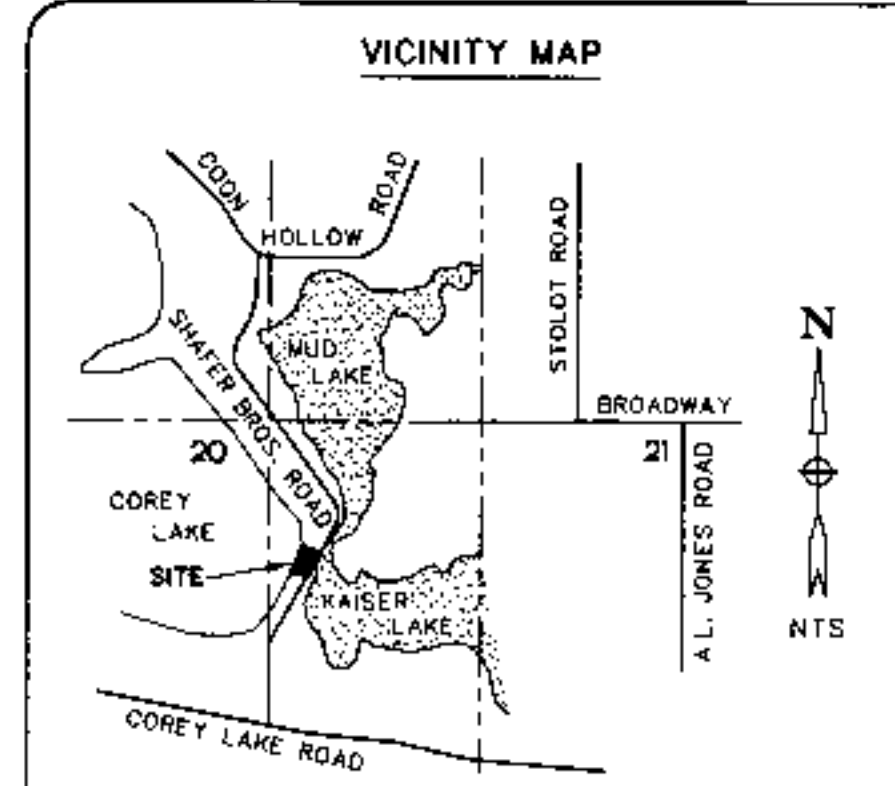
CENTER SEC. 20 T6S, R12W AS RECORDED IN L-2, P-146 OF CORNER RECORDS AND AS SHOWN ON "SCHELLHOUS SUBDIVISION" (L-3, P-30)



- LEGEND**
1. ALL DIMENSIONS ARE IN FEET.
 2. ALL CURVE DIMENSIONS ARE ARCS.
 3. MONUMENTS CONSISTING OF 1/2 INCH STEEL BARS 36 INCHES IN LENGTH, ENCASED IN A CONCRETE CYLINDER 4 INCHES IN DIAMETER AND 36 INCHES LONG, WERE PLACED AT ALL POINTS MARKED THUS: ○
 4. MONUMENTS CONSISTING OF 1/2 INCH STEEL BARS ENCASED IN A CONCRETE CYLINDER 4 INCHES IN DIAMETER WERE FOUND AT ALL POINTS MARKED THUS: ●
 5. LOT CORNERS ARE MARKED BY A CAPPED 1/2 INCH STEEL BAR 18 INCHES IN LENGTH.
 6. (R) DENOTES A RADIAL LINE.
 7. (NR) DENOTES A NON-RADIAL LINE.
 8. BEARINGS WERE ESTABLISHED FROM THE RECORDED PLAT OF "SYCAMORE BEACH" RECORDED IN LIBER 1 OF PLATS, PAGE 20.



Wayne A. Mostrom



SOUTH 1/4 COR. SEC. 20, T6S, R12W
SEE L-2, P-149 OF CORNER RECORDS

MEANDER COR. AT WEST BANK OF LAKE
SEE L-7, P-78 OF CORNER RECORDS

AMENDED PLAT OF LOTS 11 AND 12, VACATED OUTLOT AVENUE AND A PART OF VACATED LAKE STREET OF SYCAMORE BEACH

PART OF THE SE FR'L 1/4 OF SECTION 20, T6S, R12W,
FABIUS TOWNSHIP, ST. JOSEPH COUNTY, MICHIGAN

SURVEYOR'S CERTIFICATE

I, WAYNE A. MOSTROM, SURVEYOR, CERTIFY THAT I HAVE SURVEYED, DIVIDED AND MAPPED THE LAND SHOWN ON THE PLAT DESCRIBED AS FOLLOWS:

AMENDED PLAT OF LOTS 11 AND 12, VACATED OUTLOT AVENUE AND A PART OF VACATED LAKE STREET OF SYCAMORE BEACH, IN PART OF THE SE FR'L 1/4 OF SECTION 20, T 6 S, R 12 W, FABIUS TOWNSHIP, ST. JOSEPH COUNTY, MICHIGAN.

COMMENCING AT THE SOUTH 1/4 CORNER OF SAID SECTION 20 AND RUNNING THENCE N00°25'39"E, ALONG THE NORTH-SOUTH 1/4 LINE, 711.48 FEET; THENCE S90°00'00"E 233.96 FEET TO THE POINT OF BEGINNING OF THIS DESCRIPTION; THE BOUNDARY RUNS THENCE S70°05'05"E, ALONG THE NORTH LINE OF LOT 10 OF SYCAMORE BEACH (RECORDED IN LIBER 1 OF PLATS, PAGE 20), 198.07 FEET TO THE WEST RIGHT-OF-WAY LINE OF THREE RIVERS; THENCE N29°15'00"E, ALONG SAID RIGHT-OF-WAY LINE, 131.16 FEET; THENCE N72°29'10"W, ALONG AN INTERMEDIATE TRAVERSE LINE ALONG THE OUTLET BETWEEN KAISER LAKE AND COREY LAKE, 231.02 FEET; THENCE S13°30'12"W, ALONG AN INTERMEDIATE TRAVERSE LINE ALONG COREY LAKE, 120.68 FEET TO THE POINT OF BEGINNING.

BOULEVARD (KNOWN AS SHAFER BROS. ROAD);

INCLUDING ALL THAT LAND BETWEEN THE INTERMEDIATE TRAVERSE LINES AND THE WATER'S EDGE OF COREY LAKE AND THE OUTLET BETWEEN KAISER AND COREY LAKES.

COMPRISING 1 LOT AND 0.7 ACRES, MORE OR LESS.

THAT I HAVE MADE SUCH SURVEY, LAND DIVISION AND PLAT BY THE DIRECTION OF THE OWNERS OF SUCH LAND, THAT SUCH PLAT IS A CORRECT REPRESENTATION OF THE LAND SURVEYED AND THE SUBDIVISION OF IT, THAT THE REQUIRED MONUMENTS AND LDT MARKERS HAVE BEEN LOCATED IN THE GROUND AS REQUIRED BY SECTION 125 OF THE ACT, THAT THE ACCURACY OF THE SURVEY IS WITHIN THE LIMITS REQUIRED BY SECTION 126 OF THE ACT, THAT THE BEARINGS SHOWN ON THE PLAT ARE EXPRESSED AS REQUIRED BY SECTION 126(3) OF THE ACT AND AS EXPLAINED IN THE LEGEND.

DATE: 8/25/2003

Wayne A. Mostrom
WAYNE A. MOSTROM, PRESIDENT
PROFESSIONAL SURVEYOR NO. 14100
MOSTROM & ASSOC., INC.
610 W. BURR OAK ST.
CENTREVILLE, MI. 49032



I, WAYNE A. MOSTROM, SURVEYOR, DO HEREBY CERTIFY THAT THE AMENDED PLAT OF LOTS 11 AND 12, VACATED OUTLOT AVENUE AND A PART OF VACATED LAKE STREET OF SYCAMORE BEACH, IN PART OF THE SE FR'L 1/4 OF SECTION 20, T 6 S, R 12 W, FABIUS TOWNSHIP, ST. JOSEPH COUNTY, MICHIGAN, IS A TRUE AND EXACT COPY OF THE PORTION OF THE PLAT AS AMENDED BY THE ORDER TO VACATE IN THE MATTER OF MARY SUE POLLITT, AS SUCCESSOR TRUSTEE OF THE ROSCOE J. FORTNER, M.D., TRUST, WHICH WAS ENTERED BY PROBATE COURT JUDGE THOMAS E. SHUMAKER, CIRCUIT COURT JUDGE BY ASSIGNMENT, IN THE CIRCUIT COURT OF ST. JOSEPH COUNTY, MICHIGAN, IN TESTIMONY WHEREOF I HAVE HEREUNTO SET MY HAND AND OFFICIAL SEAL IN ST. JOSEPH COUNTY, MICHIGAN.

THIS 25th DAY OF AUGUST 2003.

CIRCUIT COURT FILE NO. 02-1369 CH

Wayne A. Mostrom
WAYNE A. MOSTROM, PRESIDENT
PROFESSIONAL SURVEYOR NO. 14100
MOSTROM & ASSOC., INC.
610 W. BURR OAK ST.
CENTREVILLE, MI. 49032

I, PATTIE S. BENDER, CLERK OF ST. JOSEPH COUNTY, DO HEREBY CERTIFY THAT THIS PORTION OF THE AMENDED PLAT OF LOTS 11 AND 12, VACATED OUTLOT AVENUE AND A PART OF VACATED LAKE STREET OF SYCAMORE BEACH, IN PART OF THE SE FR'L 1/4 OF SECTION 20, T 6 S, R 12 W, FABIUS TOWNSHIP, ST. JOSEPH COUNTY, MICHIGAN, IS A TRUE AND EXACT COPY OF THE PORTION OF THE PLAT AS AMENDED BY THE ORDER TO VACATE IN THE MATTER OF MARY SUE POLLITT, AS SUCCESSOR TRUSTEE OF THE ROSCOE J. FORTNER, M.D., TRUST, WHICH WAS ENTERED BY PROBATE COURT JUDGE THOMAS E. SHUMAKER, CIRCUIT COURT JUDGE BY ASSIGNMENT, IN THE CIRCUIT COURT OF ST. JOSEPH COUNTY, MICHIGAN, IN TESTIMONY WHEREOF I HAVE HEREUNTO SET MY HAND AND OFFICIAL SEAL IN ST. JOSEPH COUNTY, MICHIGAN.

THIS 25th DAY OF August 2003.

CIRCUIT COURT FILE NO. 02-1369 CH

Pattie S. Bender
PATTIE S. BENDER, COUNTY CLERK

RECORDING CERTIFICATE

STATE OF MICHIGAN
ST. JOSEPH COUNTY

THIS PLAT WAS RECEIVED FOR RECORD ON THIS 10th DAY OF October, 2003, AT 12:48 PM AND IS RECORDED IN LIBER 6 OF PLATS, PAGE 209-210.

Cynthia L. Jarratt
CYNTHIA L. JARRATT, REGISTER OF DEEDS

EXAMINED AND APPROVED

DATE Oct. 7, 2003

BY DEPARTMENT OF CONSUMER AND INDUSTRY SERVICES

BY *Maynard R. Dyer*
MAYNARD R. DYER, P.S., DIRECTOR
OFFICE OF LAND SURVEY AND REMONUMENTATION