

47202

SUPERVISOR'S PLAT NO. 3 OF FABIUS TOWNSHIP

A SUBDIVISION SITUATED IN SEC'S 16 & 17, T 6 S, R 12 W, FABIUS TWP., ST. JOSEPH CO., MICH.

DEDICATION

CHARLES C. NORTON
 KNOW ALL MEN BY THESE PRESENTS, THAT I, Charles C. Norton, SUPERVISOR OF FABIUS TOWNSHIP, ST. JOSEPH COUNTY, STATE OF MICHIGAN, BY VIRTUE OF AUTHORITY IN ME VESTED BY SECTION 51, ACT 172, OF 1929, HAVING BEEN DULY AUTHORIZED BY THE TOWNSHIP BOARD, HAVE CAUSED THE LAND EMBRALED IN THE ANNEXED PLAT TO BE SURVEYED, LAID OUT, AND PLATTED, TO BE KNOWN AS SUPERVISOR'S PLAT NO. 3 OF FABIUS TOWNSHIP, A SUBDIVISION SITUATED IN SEC'S 16 & 17, T 6 S, R 12 W, FABIUS TWP., ST. JOSEPH CO., MICH., AND THAT THE STREETS AND ALLEYS SHOWN IN SAID PLAT ARE NOW BEING USED FOR SAID PURPOSES, AND THAT THE PLAT CONFORMS WITH THE REQUIREMENTS OF SECTION 51, ACT 172, OF PUBLIC ACTS OF 1929, AS AMENDED.

Charles C. Norton
 CHARLES C. NORTON, RTE 3, THREE RIVERS, MICH.
 SUPERVISOR OF FABIUS TWP.

R. E. Sayers WITNESS
Jean L. Sayers WITNESS
 JEAN L. SAYERS, WITNESS

STATE OF MICHIGAN COUNTY OF ST. JOSEPH

ON THIS 7th DAY OF December, 1964, BEFORE ME, A NOTARY PUBLIC IN AND FOR SAID COUNTY, PERSONALLY CAME THE ABOVE NAMED CHARLES C. NORTON, SUPERVISOR OF FABIUS TOWNSHIP, KNOWN TO ME TO BE THE PERSON WHO EXECUTED THE ABOVE DEDICATION AND ACKNOWLEDGED THE SAME TO BE HIS FREE ACT AND DEED AS SUCH SUPERVISOR.

Jean L. Sayers
 JEAN L. SAYERS
 NOTARY PUBLIC, ST. JOSEPH CO., MICH.
 MY COMMISSION EXPIRES 11/27/1968

CERTIFICATE OF APPROVAL BY COUNTY ROAD COMMISSION

THIS PLAT HAS BEEN EXAMINED AND WAS APPROVED ON THE 17th DAY OF December, 1964 BY THE ST. JOSEPH COUNTY BOARD OF ROAD COMMISSIONERS.

Van Bent CHAIRMAN
D.W. Arney MEMBER
Rollo Crafts MEMBER

CERTIFICATE OF MUNICIPAL APPROVAL

THIS PLAT WAS APPROVED BY THE TOWNSHIP BOARD OF THE TOWNSHIP OF FABIUS AT A REGULAR MEETING HELD December 17, 1964, AND IN COMPLIANCE WITH SECTION 102 AND THAT THE WIDTH OF LOTS CONFORM WITH REQUIREMENTS OF SECTION 30, ACT 172 OF 1929, AS AMENDED.

Raymond A. Krull
 RAYMOND A. KRULL, TOWNSHIP CLERK

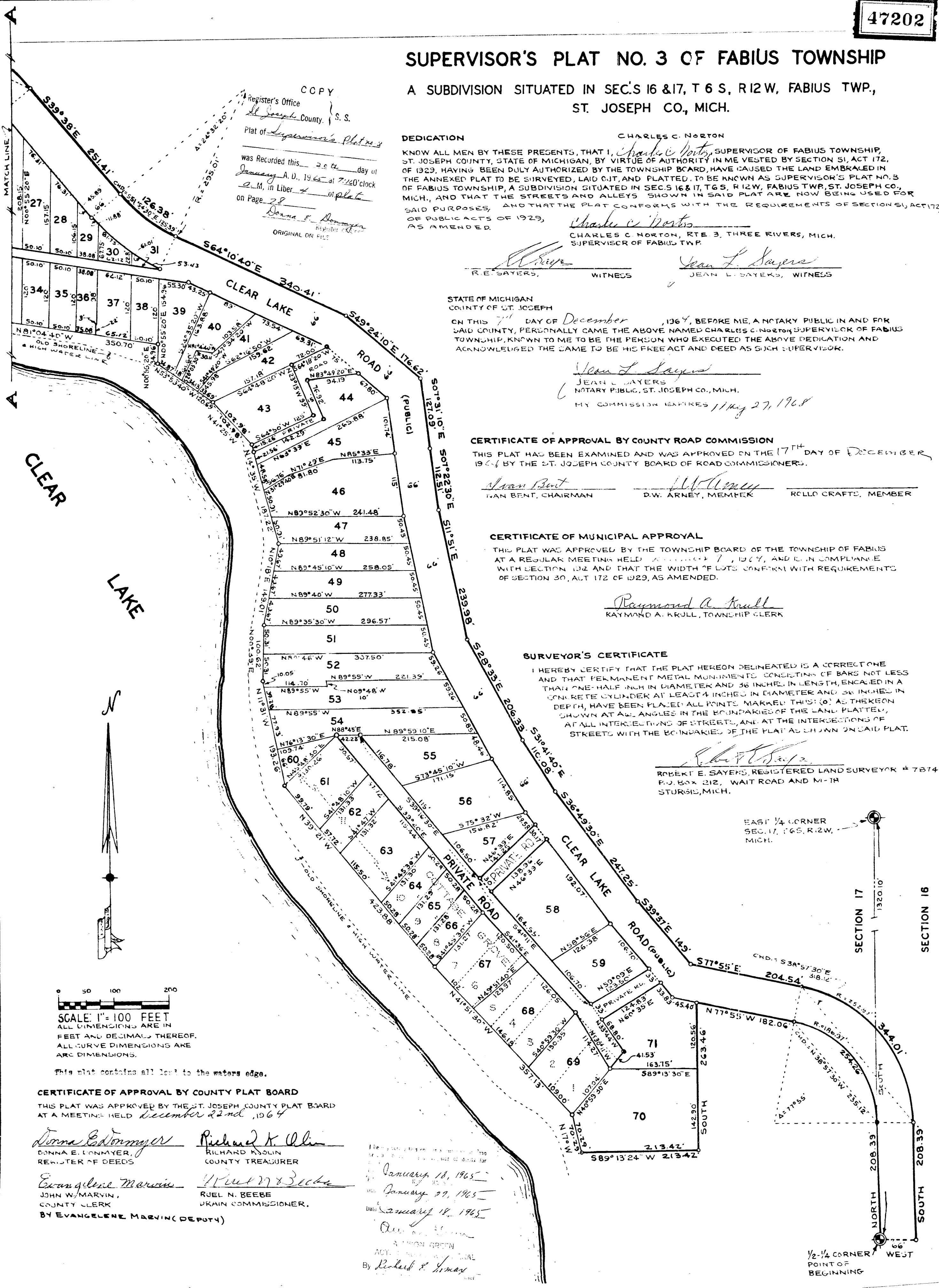
SURVEYOR'S CERTIFICATE

I HEREBY CERTIFY THAT THE PLAT HEREON DELINEATED IS A CORRECT ONE AND THAT PERMANENT METAL MONUMENTS, CONSISTING OF BARS NOT LESS THAN ONE-HALF INCH IN DIAMETER AND 36 INCHES IN LENGTH, ENCASED IN A CONCRETE CYLINDER AT LEAST 4 INCHES IN DIAMETER AND 36 INCHES IN DEPTH, HAVE BEEN PLACED AT ALL POINTS MARKED "O" AS THEREON SHOWN AT ALL ANGLES IN THE BOUNDARIES OF THE LAND PLATTED, AT ALL INTERSECTIONS OF STREETS, AND AT THE INTERSECTIONS OF STREETS WITH THE BOUNDARIES OF THE PLAT AS SHOWN ON SAID PLAT.

Robert E. Sayers
 ROBERT E. SAYERS, REGISTERED LAND SURVEYOR # 7874
 P.O. BOX 212, WAIT ROAD AND M-TH
 STURGIS, MICH.

EAST 1/4 CORNER
 SEC. 17, T 6 S, R 12 W,
 MICH.

1/2-1/4 CORNER WEST
 POINT OF
 BEGINNING



COPY
 Register's Office
 St. Joseph County, S. S.
 Plat of Supervisor's Plat No. 3
 was Recorded this 26th day of
January, A. D., 1965 at 7:20 o'clock
A. M. in Liber 4 of Plat
 on Page 28
Donna E. Donmyer
 Register of Deeds
 ORIGINAL ON FILE

CERTIFICATE OF APPROVAL BY COUNTY PLAT BOARD
 THIS PLAT WAS APPROVED BY THE ST. JOSEPH COUNTY PLAT BOARD AT A MEETING HELD December 22nd, 1964

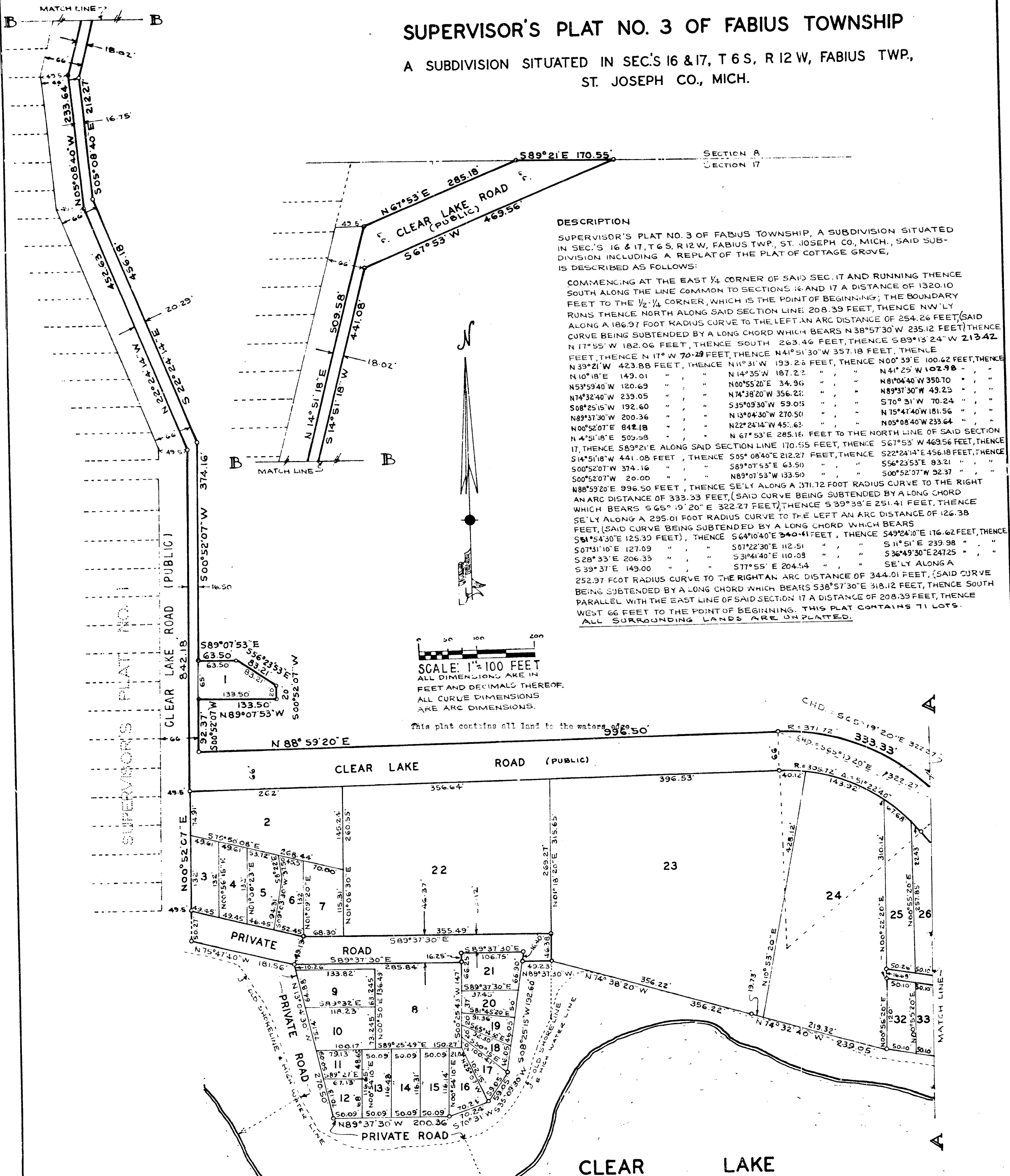
Donna E. Donmyer RICHARD K. OLIN
 DONNA E. DONMYER, COUNTY TREASURER
 REGISTER OF DEEDS

Evangelene Marvin RUEL N. BEEBE
 JOHN W. MARVIN, COUNTY CLERK
 RUEL N. BEEBE, CLERK
 BY EVANGELINE MARVIN (DEPUTY)

January 18, 1965
 January 27, 1965
 January 18, 1965
Richard E. Sayers
 A. J. GREEN
 ACT. 172 OF 1929
 By Richard E. Sayers

SUPERVISOR'S PLAT NO. 3 OF FABIUS TOWNSHIP

A SUBDIVISION SITUATED IN SEC'S 16 & 17, T 6 S, R 12 W, FABIUS TWP., ST. JOSEPH CO., MICH.



DESCRIPTION

SUPERVISOR'S PLAT NO. 3 OF FABIUS TOWNSHIP, A SUBDIVISION SITUATED IN SEC'S 16 & 17, T 6 S, R 12 W, FABIUS TWP., ST. JOSEPH CO., MICH., SAID SUBDIVISION INCLUDING A REPLAT OF THE PLAT OF COTTAGE GROVE, IS DESCRIBED AS FOLLOWS:

COMMENCING AT THE EAST 1/4 CORNER OF SAID SEC. 17 AND RUNNING THENCE SOUTH ALONG THE LINE COMMON TO SECTIONS 16 AND 17 A DISTANCE OF 1320.10 FEET TO THE 1/2-1/4 CORNER, WHICH IS THE POINT OF BEGINNING; THE BOUNDARY RUNS THENCE NORTH ALONG SAID SECTION LINE 208.39 FEET, THENCE NW 1/4LY ALONG A 186.97 FOOT RADIUS CURVE TO THE LEFT AN ARC DISTANCE OF 254.26 FEET, SAID CURVE BEING SUBTENDED BY A LONG CHORD WHICH BEARS N 38° 57' 30" W 235.12 FEET, THENCE N 17° 55' W 182.06 FEET, THENCE SOUTH 263.46 FEET, THENCE S 89° 13' 24" W 213.42 FEET, THENCE N 17° W 70.29 FEET, THENCE N 41° 51' 30" W 357.18 FEET, THENCE N 39° 21' W 423.88 FEET, THENCE N 11° 31' W 193.28 FEET, THENCE N 00° 39' E 100.62 FEET, THENCE N 10° 18' E 149.01 " " " " N 14° 35' W 187.22 " " " " N 41° 25' W 102.98 " " " " N 53° 59' 40" W 120.69 " " " " N 00° 55' 20" E 34.96 " " " " N 81° 04' 40" W 350.70 " " " " N 74° 32' 40" W 239.05 " " " " N 74° 38' 20" W 356.22 " " " " N 89° 37' 30" W 49.23 " " " " S 08° 25' 15" W 192.60 " " " " S 35° 09' 30" W 59.05 " " " " S 70° 31' W 70.24 " " " " N 89° 37' 30" W 200.36 " " " " N 13° 04' 30" W 270.50 " " " " N 75° 47' 40" W 181.56 " " " " N 00° 52' 07" E 842.18 " " " " N 22° 24' 14" W 457.63 " " " " N 05° 08' 40" W 233.64 " " " " N 4° 51' 18" E 509.58 " " " " N 67° 53' E 285.16 FEET TO THE NORTH LINE OF SAID SECTION 17, THENCE S 89° 21' E ALONG SAID SECTION LINE 170.55 FEET, THENCE S 67° 53' W 469.56 FEET, THENCE S 14° 51' 18" W 441.08 FEET, THENCE S 05° 08' 40" E 212.27 FEET, THENCE S 00° 52' 07" W 374.16 " " " " S 89° 07' 53" E 63.50 " " " " S 56° 23' 53" E 83.21 " " " " S 00° 52' 07" W 20.00 " " " " N 89° 07' 53" W 133.50 " " " " S 00° 52' 07" W 92.37 " " " " N 88° 59' 20" E 996.50 FEET, THENCE SE 1/4LY ALONG A 371.72 FOOT RADIUS CURVE TO THE RIGHT AN ARC DISTANCE OF 333.33 FEET, (SAID CURVE BEING SUBTENDED BY A LONG CHORD WHICH BEARS S 65° 19' 20" E 322.27 FEET), THENCE S 39° 35' E 251.41 FEET, THENCE SE 1/4LY ALONG A 295.01 FOOT RADIUS CURVE TO THE LEFT AN ARC DISTANCE OF 126.38 FEET, (SAID CURVE BEING SUBTENDED BY A LONG CHORD WHICH BEARS S 51° 54' 30" E 125.30 FEET), THENCE S 64° 10' 40" E 340.41 FEET, THENCE S 49° 24' 10" E 176.62 FEET, THENCE S 07° 31' 10" E 127.09 " " " " S 07° 22' 30" E 112.51 " " " " S 11° 51' E 239.98 " " " " S 28° 33' E 206.33 " " " " S 31° 41' 40" E 110.08 " " " " S 36° 49' 30" E 247.25 " " " " S 39° 37' E 149.00 " " " " S 77° 55' E 204.54 " " " " SE 1/4LY ALONG A 252.37 FOOT RADIUS CURVE TO THE RIGHT AN ARC DISTANCE OF 344.01 FEET, (SAID CURVE BEING SUBTENDED BY A LONG CHORD WHICH BEARS S 38° 57' 30" E 318.12 FEET, THENCE SOUTH PARALLEL WITH THE EAST LINE OF SAID SECTION 17 A DISTANCE OF 208.39 FEET, THENCE WEST 66 FEET TO THE POINT OF BEGINNING. THIS PLAT CONTAINS 71 LOTS. ALL SURROUNDING LANDS ARE UNPLATTED.

SCALE: 1" = 100 FEET
ALL DIMENSIONS ARE IN FEET AND DECIMALS THEREOF.
ALL CURVE DIMENSIONS ARE ARC DIMENSIONS.

This plat contains all land to the waters of CLEAR LAKE