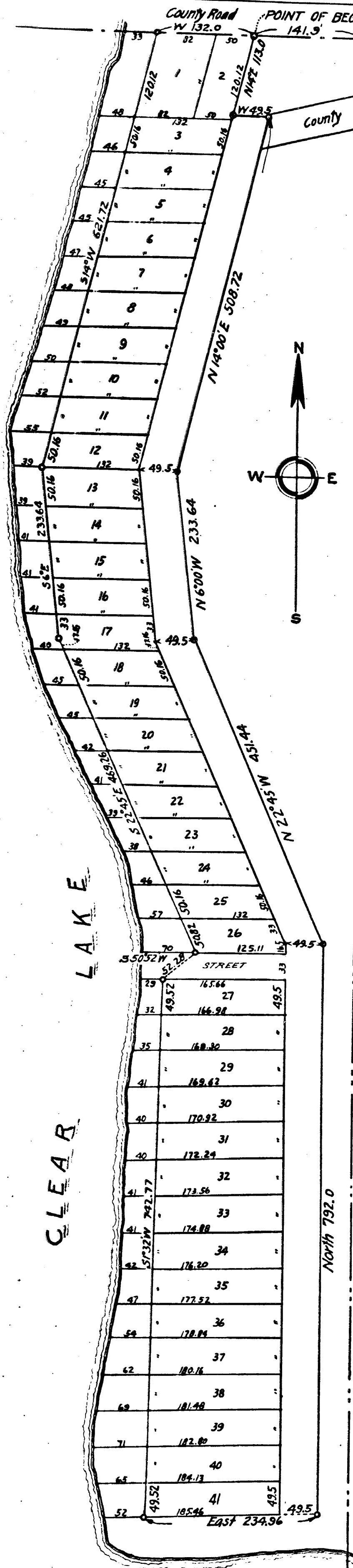


Note: Plat includes all land to water's edge. All dimensions are given in feet and decimals thereof.



"SUPERVISOR'S PLAT NO. 1

OF FABIUS TOWNSHIP, A SUBDIVISION OF PART OF THE E 1/2 OF THE NW 1/4 OF SECTION 17, T6S, R12W, MICHIGAN MERIDIAN, IN FABIUS TOWNSHIP, ST. JOSEPH COUNTY, MICHIGAN"

SCALE 1 INCH = 100 FEET

DEDICATION

KNOW ALL MEN BY THESE PRESENTS, That I, Ray Mohney, Supervisor of Fabius Township, St. Joseph County, State of Michigan, by virtue of authority in me vested by Section 51, Act 172 of 1929, having been duly authorized by the Township Board, have caused the land described in the annexed plat to be surveyed, laid out, and platted, to be known as "Supervisor's Plat No. 1, of Fabius Township, a subdivision of part of the E 1/2 of the NW 1/4 of Section 17, T6S, R12W, Michigan Meridian, in Fabius Township, St. Joseph County, Michigan," and that the streets and alleys as shown on said plat are now being used for such purposes.

Witnesses:

Ota D. Avery
Ota D. Avery

Dorothy Heckelman
Dorothy Heckelman

Ray Mohney
Ray Mohney
Supervisor of the Township of Fabius.

ACKNOWLEDGMENT

STATE OF MICHIGAN } ss
County of St. Joseph }
On this 17 day of March A.D. 1941 before me, a Notary Public in and for said County, personally came the above named Ray Mohney, Supervisor of Fabius Township known to me to be the person who executed the above dedication and acknowledged the same to be his free act and deed as such Supervisor.

John H. Linsner
John H. Linsner
Notary Public in and for said County.
My Commission expires Feb. 6, 1944

DESCRIPTION OF LAND PLATTED

The land embraced in the annexed plat of "Supervisor's Plat No. 1 of Fabius Township, a subdivision of part of the E 1/2 of the NW 1/4 of Section 17, T6S, R12W, Michigan Meridian, in Fabius Township, St. Joseph County, Michigan," is described as follows: Beginning at a point 141.9 feet west of the north 1/4 corner of Section 17, T6S, R12W, Michigan Meridian, thence West 132 feet, thence S 14°00'W 621.72 feet, thence S 6°00'E 233.64 feet, thence S 22°45'E 469.26 feet, thence S 50°52'W 52.28 feet, thence S 1°32'W 742.77 feet, thence East 234.96 feet, thence North 792.0 feet, thence N 22°45'W 451.44 feet, thence N 6°00'W 233.64 feet, thence N 14°00'E 508.72 feet, thence West 49.5 feet, thence N 14°00'E 113 feet to the point of beginning.

SURVEYOR'S CERTIFICATE

I hereby certify that the plat hereon delineated is a correct one and that permanent metal monuments consisting of bars not less than one half inch in diameter and 48 inches in length or shorter bars of not less than one half inch in diameter lapped over each other at least 6 inches with an overall length of not less than 48 inches, encased in a concrete cylinder at least 4 inches in diameter and 48 inches in depth have been placed at points marked thus "o" as thereon shown at all angles in the boundaries of the land platted, at all the intersections of streets, intersections of alleys, or of streets and alleys, and at the intersections of streets and alleys with the boundaries of the plat as shown on said plat.

H.A. Murray
H.A. Murray
Registered Land Surveyor.

CERTIFICATE OF APPROVAL BY BOARD OF COUNTY ROAD COMMISSIONERS

This plat has been examined and was approved on the 20 day of March, 1941, by the St. Joseph County Board of Road Commissioners.

Joseph H. Woodley Chairman
Ray G. Stewart Member
Arthur L. Hubbard Member

CERTIFICATE OF MUNICIPAL APPROVAL

This plat was approved by the Township Board of the Township of Fabius at a meeting held March 18, 1941.

Leslie Krull
Leslie Krull
Clerk

CERTIFICATE OF APPROVAL BY COUNTY BOARD
This plat was approved on the 20 day of March, 1941.

Edward H. Anderson Judge of Probate
Thomas Mason County Clerk
Fenner Ball Deputy County Treasurer

I HEREBY CERTIFY THAT THIS COPY IS A TRUE COPY OF THE MAP OR PLAT FORWARDED THE REGISTER OF DEEDS FOR RECORDING.

COMPARED March 26, 1941
Mayme Jewell Purdy
Mayme Jewell Purdy DEPUTY AUDITOR GENERAL

Examined and Approved
March 26, 1941
Mayme Jewell Purdy
Mayme Jewell Purdy DEPUTY AUDITOR GENERAL
FILED IN AUDITOR GENERAL'S DEPT.
April 10, 1941
Mayme Jewell Purdy
Mayme Jewell Purdy DEPUTY AUDITOR GENERAL

COPY

Register's Office }
St. Joseph County, } ss.
Plat of Supervisor's Plat No. 1
of Fabius Township
was Recorded this 27 day of
March A.D., 1941 at 11 O'clock
A. M. in Liber 2 of Plat
on Page 67
Henrietta E. Colkina
Henrietta E. Colkina
Register of Deeds
ORIGINAL ON FILE