

SUNNYFIELD NO. 5

A SUBDIVISION SITUATED IN THE EAST 1/2 OF THE WEST 1/2 OF SECTION 13, TOWN 6 SOUTH, RANGE 12 WEST, FABIUS TOWNSHIP, ST. JOSEPH COUNTY, MICHIGAN.

CERTIFICATE OF MUNICIPAL APPROVAL:

I HEREBY CERTIFY THAT THIS PLAT WAS APPROVED BY THE TOWNSHIP BOARD OF THE TOWNSHIP OF FABIUS AT A MEETING HELD MAY 5, 1972, AND WAS REVIEWED AND FOUND TO BE IN COMPLIANCE WITH ACT 288, P.A. 1967. THIS PLAT WAS APPROVED ON APRIL 24, 1972 BY THE ST. JOSEPH COUNTY HEALTH DEPARTMENT.

Raymond A. Krull
RAYMOND A. KRULL, CLERK

CERTIFICATE OF COUNTY ROAD COMMISSIONERS:

APPROVED ON MAY 4, 1972 AS COMPLYING WITH SECTIONS 183 OF ACT 288, P.A. 1967, AND THE APPLICABLE PUBLISHED RULES AND REGULATIONS OF THE BOARD OF ROAD COMMISSIONERS OF ST. JOSEPH COUNTY.

Frank Shellenbarger
FRANK SHELLENBARGER, CHAIRMAN

Carl L. Roberts *D.W. Arney*
CARL L. ROBERTS, MEMBER D.W. ARNEY, MEMBER

COUNTY DRAIN COMMISSIONER'S CERTIFICATE:

APPROVED ON MAY 4, 1972 AS COMPLYING WITH SECTION 192 OF ACT 288, P.A. 1967, AND THE APPLICABLE RULES AND REGULATIONS PUBLISHED BY MY OFFICE IN THE COUNTY OF ST. JOSEPH.

Lloyd S. Cupp
LLOYD S. CUPP, DRAIN COMMISSIONER

COUNTY PLAT BOARD CERTIFICATE:

THIS PLAT HAS BEEN REVIEWED AND IS APPROVED BY THE ST. JOSEPH COUNTY PLAT BOARD ON MAY 10, 1972, AS BEING IN COMPLIANCE WITH ALL OF THE PROVISIONS OF ACT 288, P.A. 1967, AND THE PLAT BOARD'S APPLICABLE RULES AND REGULATIONS.

Donna E. Donmyer
DONNA E. DONMYER
REGISTER OF DEEDS

Stanley M. Huff *John W. Marvin*
STANLEY M. HUFF, COUNTY TREASURER JOHN W. MARVIN, COUNTY CLERK

SURVEYOR'S CERTIFICATE:

I, ROBERT E. SAYERS, SURVEYOR, CERTIFY: THAT I HAVE SURVEYED, DIVIDED AND MAPPED THE LAND SHOWN ON THIS PLAT, DESCRIBED AS FOLLOWS: SUNNYFIELD NO. 5, A SUBDIVISION SITUATED IN THE EAST 1/2 OF THE WEST 1/2 OF SECTION 13, TOWN 6 SOUTH, RANGE 12 WEST, FABIUS TOWNSHIP, ST. JOSEPH COUNTY, MICHIGAN, IS DESCRIBED AS FOLLOWS; COMMENCING AT THE 5/4 COR. OF SAID SECTION 13 AND RUNNING THENCE N 00° 01' W ALONG THE N-S 1/4 LINE OF SAID SECTION 13 A DISTANCE OF 2585.14 FEET, THENCE WEST 223.62 FEET TO THE POINT OF BEGINNING; THENCE WEST 140 FEET, THENCE SW'LY ALONG A 96 FOOT RADIUS CURVE TO THE RIGHT AN ARC DISTANCE OF 150.8 FEET (SAID CURVE HAVING AN "I" ANGLE OF 90° AND BEING SUBTENDED BY A CHORD BEARING S 45° W 135.76 FEET), THENCE WEST 220 FEET, THENCE N'W'LY ALONG A 96 FOOT RADIUS CURVE TO THE RIGHT AN ARC DISTANCE OF 150.8 FEET (SAID CURVE HAVING AN "I" ANGLE OF 90° AND BEING SUBTENDED BY A CHORD BEARING N 45° W 135.76 FEET), THENCE NORTH 617.98 FEET, THENCE N 88° 40' 30" E 313.08 FEET, THENCE NORTH 150 FEET, THENCE N 88° 40' 30" E 66 FEET, THENCE SOUTH 150 FEET, THENCE N 88° 40' 30" E 313.08 FEET, THENCE SOUTH 633.99 FEET TO THE POINT OF BEGINNING. THIS SUBDIVISION CONTAINS 22 NUMBERED LOTS. THAT I HAVE MADE SUCH SURVEY, LAND-DIVISION AND PLAT BY THE DIRECTION OF THE OWNER OF SUCH LAND. THAT SUCH PLAT IS A CORRECT REPRESENTATION OF ALL THE EXTERIOR BOUNDARIES OF THE LAND SURVEYED AND THE SUBDIVISION OF IT. THAT THE REQUIRED MONUMENTS AND LOT MARKERS HAVE BEEN LOCATED IN THE GROUND AS REQUIRED BY SECTION 125 OF THE ACT. THAT THE ACCURACY OF THE SURVEY IS WITHIN THE LIMITS REQUIRED BY SECTION 126 OF THE ACT. THAT THE BEARINGS SHOWN ON THE PLAT ARE EXPRESSED AS REQUIRED BY SECTION 126 (3) OF THE ACT AND AS EXPLAINED IN THE LEGEND.

Robert E. Sayers
ROBERT E. SAYERS, REGISTERED LAND SURVEYOR #7874
P.O. BOX 212, STURGIS, MICHIGAN, 49791

MAY 2, 1972
DATE

PROPRIETOR'S CERTIFICATE:

I, AS PROPRIETOR, CERTIFY THAT I CAUSED THE LAND EMBRACED IN THIS PLAT TO BE SURVEYED, DIVIDED, MAPPED AND DEDICATED AS REPRESENTED ON THIS PLAT AND THAT GREENFIELD CT., W. & E. S. GREENFIELD CTS. WHICH FALL WITHIN THE BOUNDARY OF SAID PLAT ARE FOR THE USE OF THE PUBLIC; THAT THE PUBLIC UTILITY EASEMENTS ARE PRIVATE EASEMENTS AND THAT ALL OTHER EASEMENTS ARE FOR THE USES SHOWN ON THE PLAT.

Ruth H. Smith *Robert E. Sayers*
RUTH H. SMITH ROBERT E. SAYERS, WITNESS
418 U.S. 131
THREE RIVERS, MICHIGAN

Jean L. Sayers
JEAN L. SAYERS, WITNESS

ACKNOWLEDGEMENT:

STATE OF MICHIGAN SS
COUNTY OF ST. JOSEPH

PERSONALLY CAME BEFORE ME THIS 3rd DAY OF MAY, 1972 THE ABOVE NAMED RUTH H. SMITH, TO ME KNOWN TO BE THE PERSON WHO EXECUTED THE FOREGOING INSTRUMENT AND ACKNOWLEDGED THAT SHE EXECUTED THE SAME AS HER FREE ACT AND DEED.

NOTARY PUBLIC *Jean L. Sayers & Joseph* COUNTY, MICHIGAN.
JEAN L. SAYERS ST. JOSEPH
MY COMMISSION EXPIRES: MAY 27, 1972

COUNTY TREASURER'S CERTIFICATE:

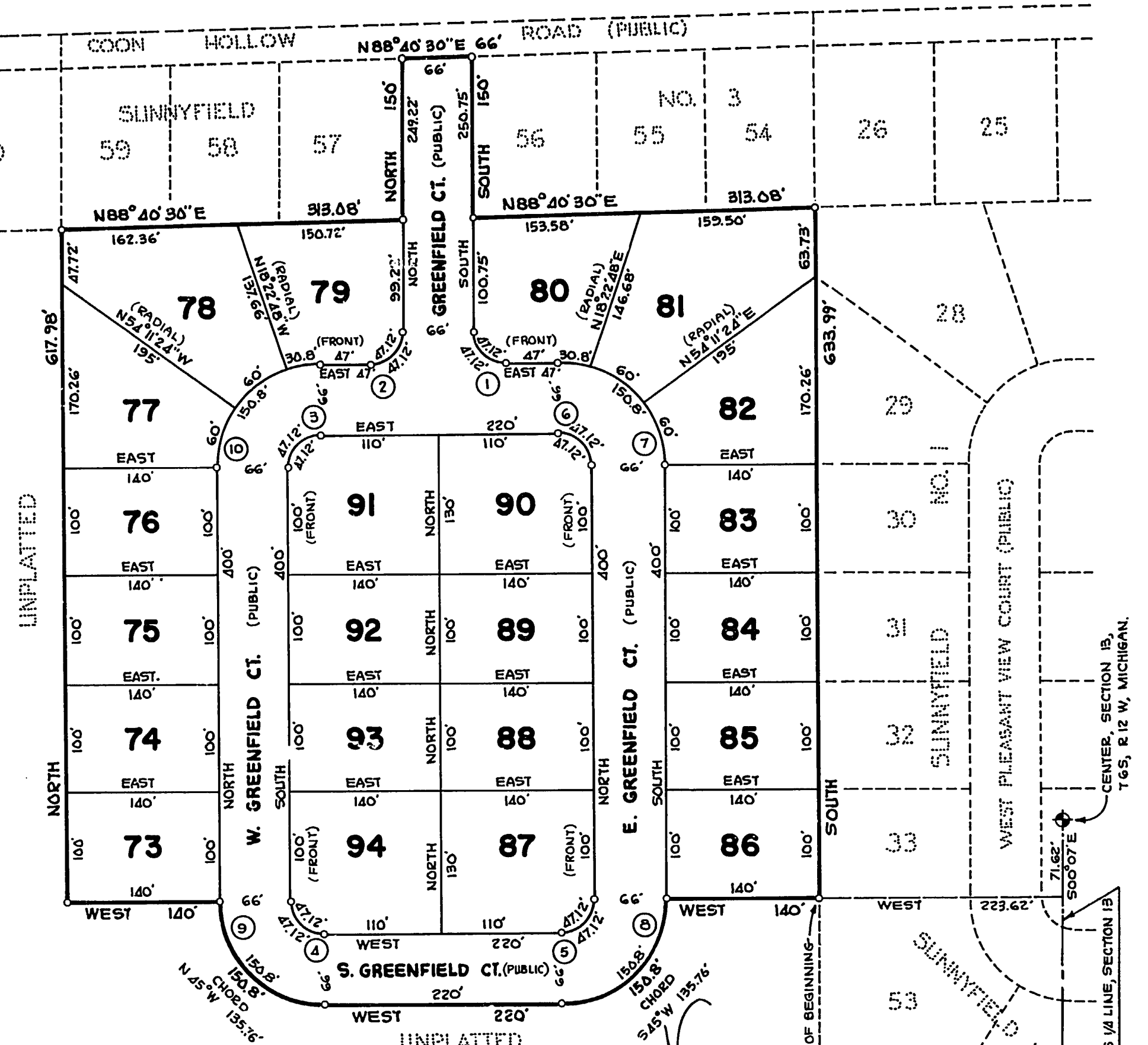
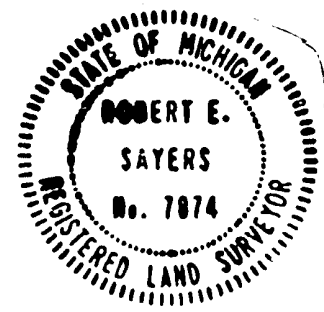
RECORDS IN MY OFFICE SHOW NO UNPAID TAXES OR SPECIAL ASSESSMENTS FOR THE FIVE YEARS PRECEDING MAY 4, 1972, INVOLVING THE LANDS INCLUDED IN THIS PLAT.

Stanley M. Huff
STANLEY M. HUFF, ST. JOSEPH COUNTY TREASURER

REGISTER OF DEEDS OFFICE SS
ST. JOSEPH COUNTY

THIS PLAT OF SUNNYFIELD NO. 5 WAS RECORDED THIS 30 DAY OF June, 1972 AT 12:17 O'CLOCK P.M. IN LIBER 5 OF PLATS ON PAGE 41.

Donna E. Donmyer
DONNA E. DONMYER
REGISTER OF DEEDS



NO.	RADIUS	LENGTH	ANGLE	CHORD BEARING	DISTANCE
1	30'	47.12'	90°	N 45° W	21.21'
2	"	"	"	S 45° W	"
3	"	"	"	S 45° W	"
4	"	"	"	S 45° E	"
5	"	"	"	N 45° E	"
6	"	"	"	N 45° W	"
7	96'	150.8'	"	S 45° E	135.76'
8	"	"	"	S 45° W	"
9	"	"	"	N 45° W	"
10	"	"	"	N 45° E	"

LEGEND

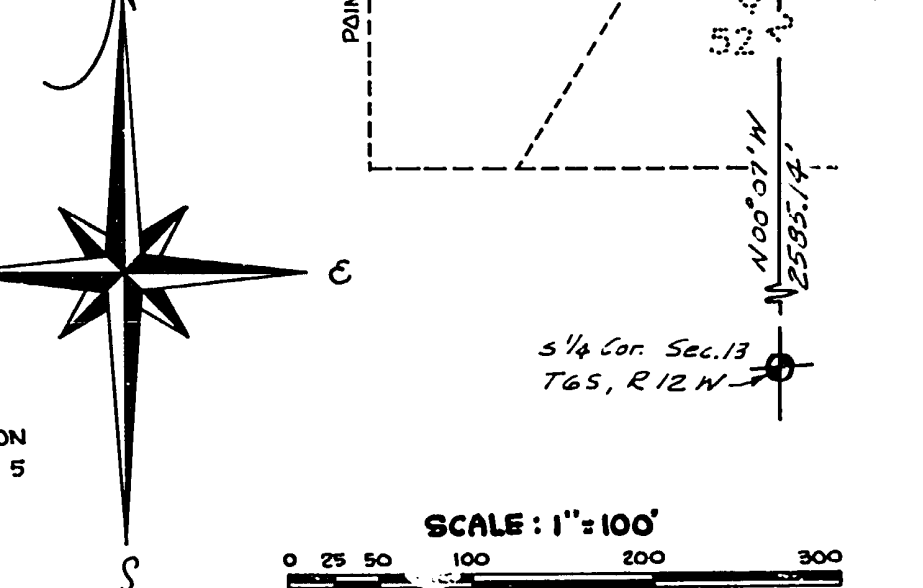
PLAT BEARINGS WERE ESTABLISHED BY THE N-S 1/4 LINE OF SECTION 13 AS SHOWN ON THE PLAT OF SUNNYFIELD NO. 4 RECORDED IN LIBER 5 OF PLATS ON PAGE 3.

ALL DIMENSIONS ARE IN FEET.

ALL CURVE DIMENSIONS ARE ARC DIMENSIONS.

4" CONCRETE MONUMENTS ARE AT ALL POINTS MARKED THIS: "o"

ALL LOT CORNERS ARE MARKED BY A 1/2"x18" SOLID IRON BAR.



Certified true copy of recorded plat.

Allison Green
ALLISON GREEN
STATE TREASURER

Richard G. Long
RICHARD G. LONG, REGISTRAR

July 7, 1972

52977