

DESCRIPTION

The land embraced in the annexed plot of **SHOREWOOD BEACH** is described as the South fractional half of Sec. 7, T. 6 S. R. 12 W. and is bounded as follows:—
Beginning at the corner of sections 7, 8, 17 and 18; North 28.41 Ch.
Thence, S 76° W. 2.71 Ch.; Thence, S 46° W. 5.65 Ch.; Thence, S 26° W. 4.58 Ch.; Thence, S 68° W. 2.25 Ch.; Thence, S 87° W. 2.59 Ch.; Thence, S 72° W. 1.08 Ch.; Thence, S 55° W. 2.62 Ch.; Thence, S 60° W. 2.17 Ch.; Thence, S 74° W. 1.82 Ch.; Thence, N 73° W. 3.67 Ch.; Thence, N 52° W. 7.22 Ch.; Thence, West 2.44 Ch.; Thence, S 91° W. 1.53 Ch.; Thence, S 31° W. 2.10 Ch.; Thence, S 36° W. 6.10 Ch.; Thence, S 69° W. 5.95 Ch.; Thence, S 78° W. 4.03 Ch.; Thence, S 69° W. 1.96 Ch.; Thence, S 50° W. 1.60 Ch.; Thence, S 17° W. 6.71 Ch.; Thence, S 14° E. 2.16 Ch.; Thence, East 51.95 Ch. to the place of beginning.

Surveyors Certificate

I, Samuel S. Reed, the surveyor who made the survey hereby certify that the plot herein delineated is a correct one, and that permanent monuments, consisting of gas pipe stakes, of (1") one inch iron pipe, twenty inches or longer, in size, were driven at all points marked thus, (O), with the exception of the S.E. corner of the plot where a pipe 1 1/2 x 30" was driven. At the point marked (C), the corner is a cottonwood tree (9") nine inches in diameter. Beach Walk is 15 links wide at all places and is permanently marked by the iron stakes of the boundary line which is the outside line of Beach Walk, as shown on plat. Edgewood Road is 4 1/2 links wide. Permanent monuments embrace all angles in the plat boundary, the center line of streets or roads at angles and intersections, and at the center line of Shore Lane with the south easterly side of Beach Walk and the North westerly side of Edgewood Road.

Samuel S. Reed,
Surveyor.

COUNTY TREASURER'S CERTIFICATE

I HEREBY CERTIFY that there are no tax liens or titles held by the State on the lands described below, and that there are no tax liens or titles held by individuals on said lands, for the five years preceding the twenty-fourth day of May, 1913, and that the taxes for said period of five years are paid, as shown by the records of this office, said lands are described as the South fractional half of Sec. 7, T. 6 S. R. 12 W.

Jacob B. Schmidt,
County Treasurer.

DEDICATION.

KNOW ALL MEN BY THESE PRESENTS, That we, John D. Vandercreek and Elsie P. Vandercreek, his wife, and Edward J. Skidmore and Edith J. Skidmore, his wife, as proprietors have caused the land embraced in the annexed plot to be surveyed laid out and plotted to be known as **SHOREWOOD BEACH**, St. Joseph Co. Mich., and that the streets, roads, lane and walk shown on this plat are hereby dedicated to the use of the public.

Signed and sealed in presence of: John D. Vandercreek [L.S.]
George W. Springer Elsie P. Vandercreek [L.S.]
Duncan Keith Edward J. Skidmore [L.S.]
Edith J. Skidmore [L.S.]

STATE of Illinois } s.s.
County of Cook }

On this 24th day of May 1913 before me, a Notary Public in and for said county personally came the above named John D. Vandercreek, Elsie P. Vandercreek, his wife and Edward J. Skidmore and Edith J. Skidmore, his wife, known to me to be the persons who executed the above dedication and acknowledged the same to be their free act and deed.

Duncan Keith
Notary Public

My commission expires October 5th 1914

CERTIFICATE OF SUPERVISORS

This plat was approved by the County Board of Supervisors of St. Joseph County at a meeting held Oct. 15, 1913

S. L. Pitter Clerk.

CERTIFICATE OF TOWNSHIP BOARD

This plat was approved by the Township Board of the Township of Fabius at a meeting held June 21, 1913

Irvin H. Miller Clerk.

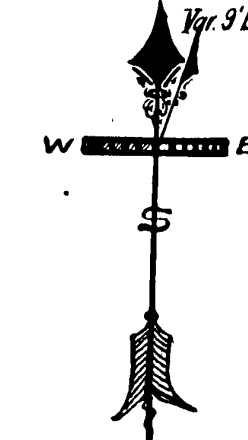
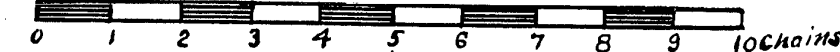
SHOREWOOD BEACH.

St. Joseph Co. Mich.

FABIVS TOWNSHIP

Being the S. fract. 1/2 Sec. 7, T. 6 S. R. 12 W.

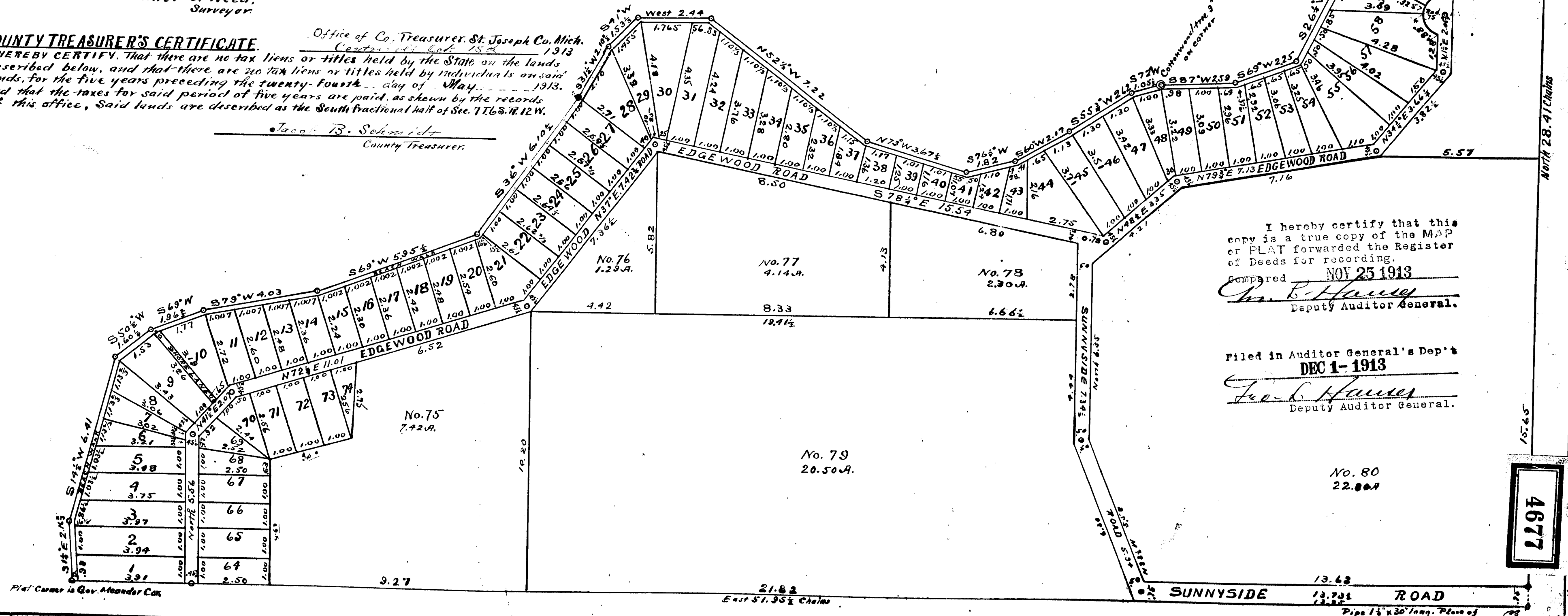
SCALE 2 1/2 Ch. = 1 In.



Examined and Approved
Nov 25 1913
Deputy Auditor General.

COPY REGISTERED IN THE REGISTER'S OFFICE. St. Joseph County Mich.
Shorewood Beach
WAS RECORDED THIS 26 DAY OF NOV. A. D. 1913 AT 2:00 P. M. IN LABOR 1 ON PLAT
ORIGINAL ON FILE

All dimensions on this plat are given in chains and decimals thereof.



I hereby certify that this copy is a true copy of the MAP or PLAT forwarded the Register of Deeds for recording.
Compared NOV 25 1913
Deputy Auditor General.

Filed in Auditor General's Dep't
DEC 1- 1913
Deputy Auditor General.

4677